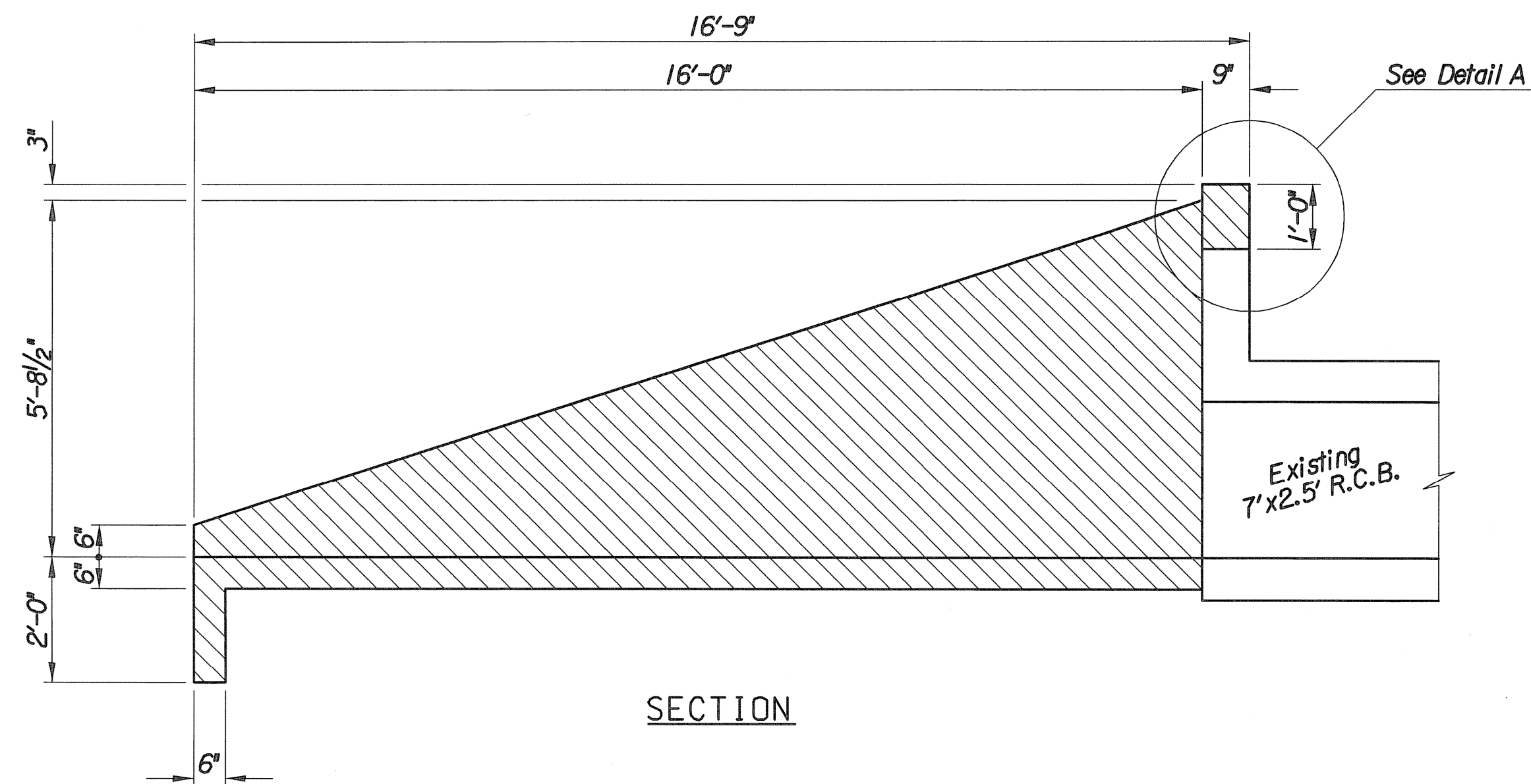
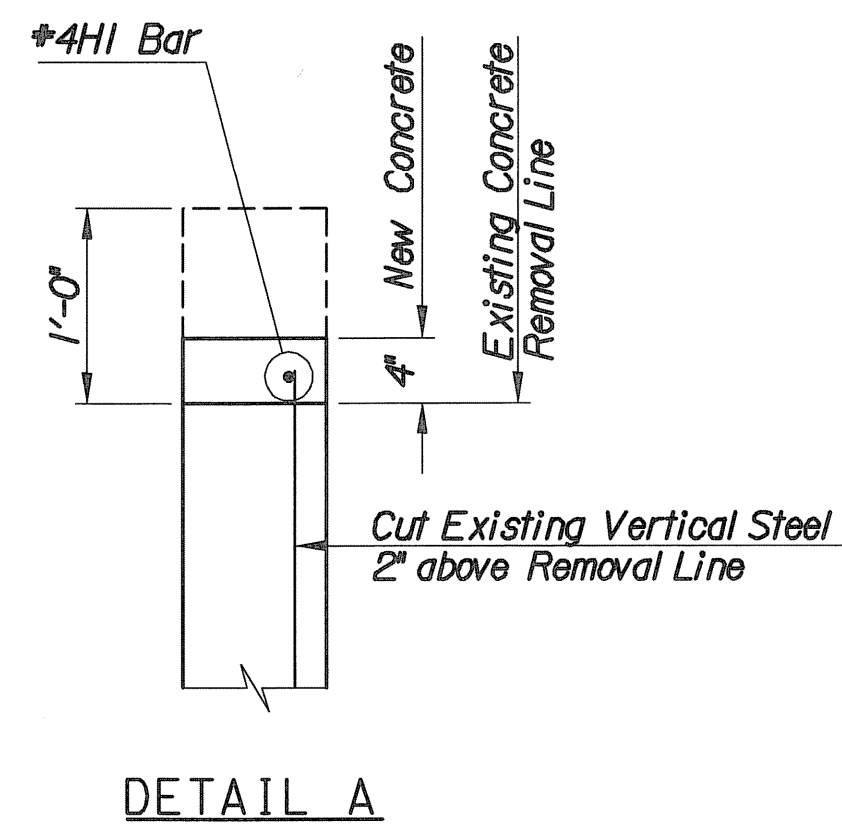


PLAN



SECTION



DETAIL A

SUMMARY OF QUANTITIES *		
Item	Quantity	Unit
Removal of Existing Structure	4.65	C.Y.
Reinforcing Steel (Grade 60)	5	Lbs.
Concrete	0.1	C.Y.

* For Information Only

CONCRETE REMOVAL NOTES

Remove all of the Wings, Floor, and Toe Wall. Remove the top 12" of the Hubguard and cut the existing vertical reinforcing steel to provide a 2 foot extension for the new #4 horizontal bar.

Existing horizontal steel shall remain and any damaged or unusable steel protruding from the headwall shall be replaced by drilling and grouting a dowel bar a minimum of 9" into the existing headwall.

Removal of Existing Structure shall be included in the Lump Sum bid item "Removal of Existing Structure".

Plotted By: mlb Date: 12/17/2013 4:11:53 PM
 FILE: I:\2012\12568-RemovalDetail.dgn

	No.	Revision	By	Date
	MAIZE ROAD PAVING AND DRAINAGE IMPROVEMENTS LOT 1, NEWMARKET V ADDITION EXISTING R.C.B. CONCRETE REMOVAL			
	GARY JANZEN, P.E. - CITY ENGINEER CITY OF WICHITA PROJECT NO. 472-84607			
	PROFESSIONAL ENGINEERING CONSULTANTS, P.A. 303 SOUTH TOPEKA WICHITA, KS 67202 316-262-2691 www.pec1.com			
Designed by	MLB	Job No.	12568	St. 31 of 65
Drawn by	WLL	Date	September 2013	