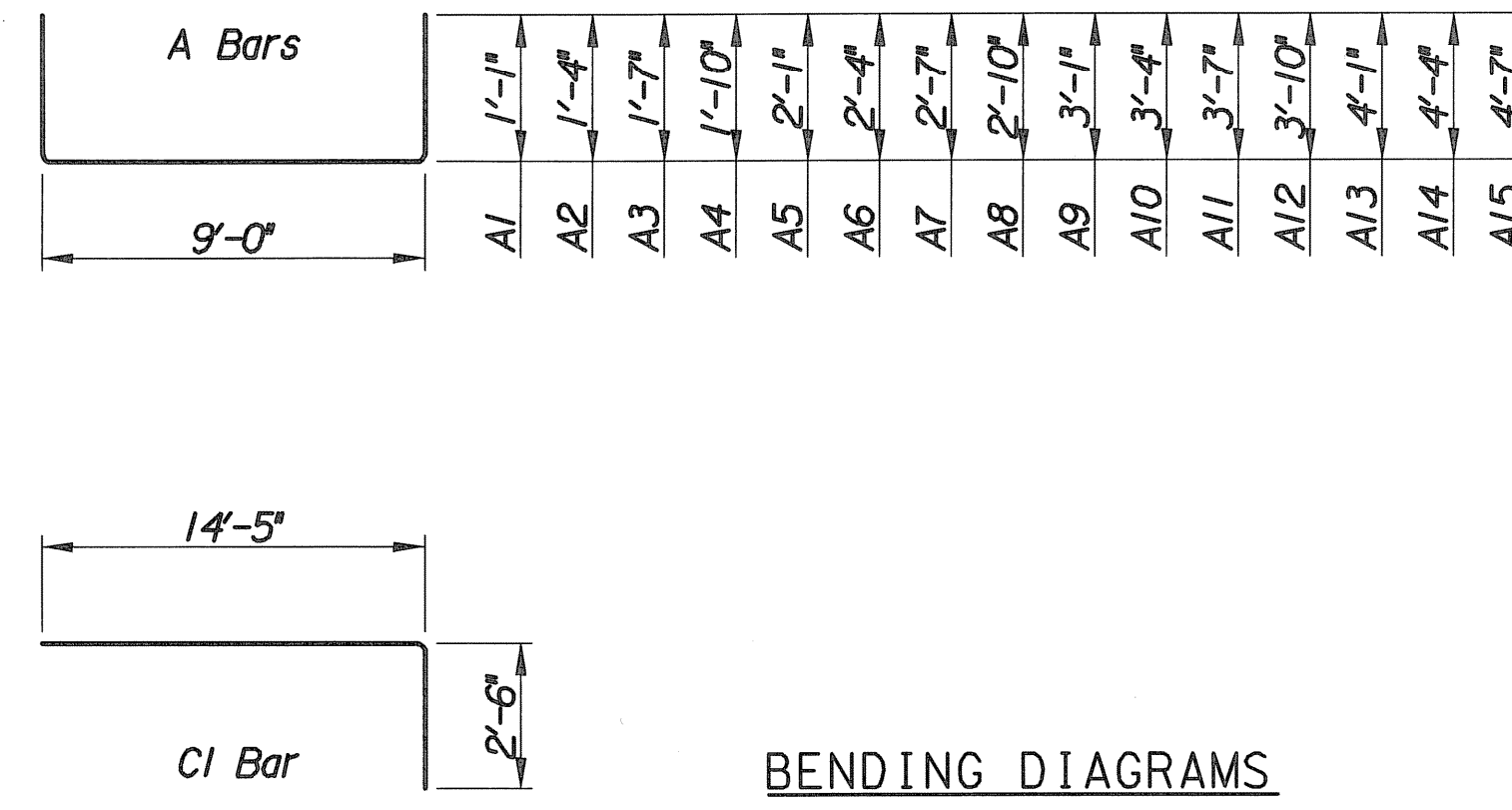
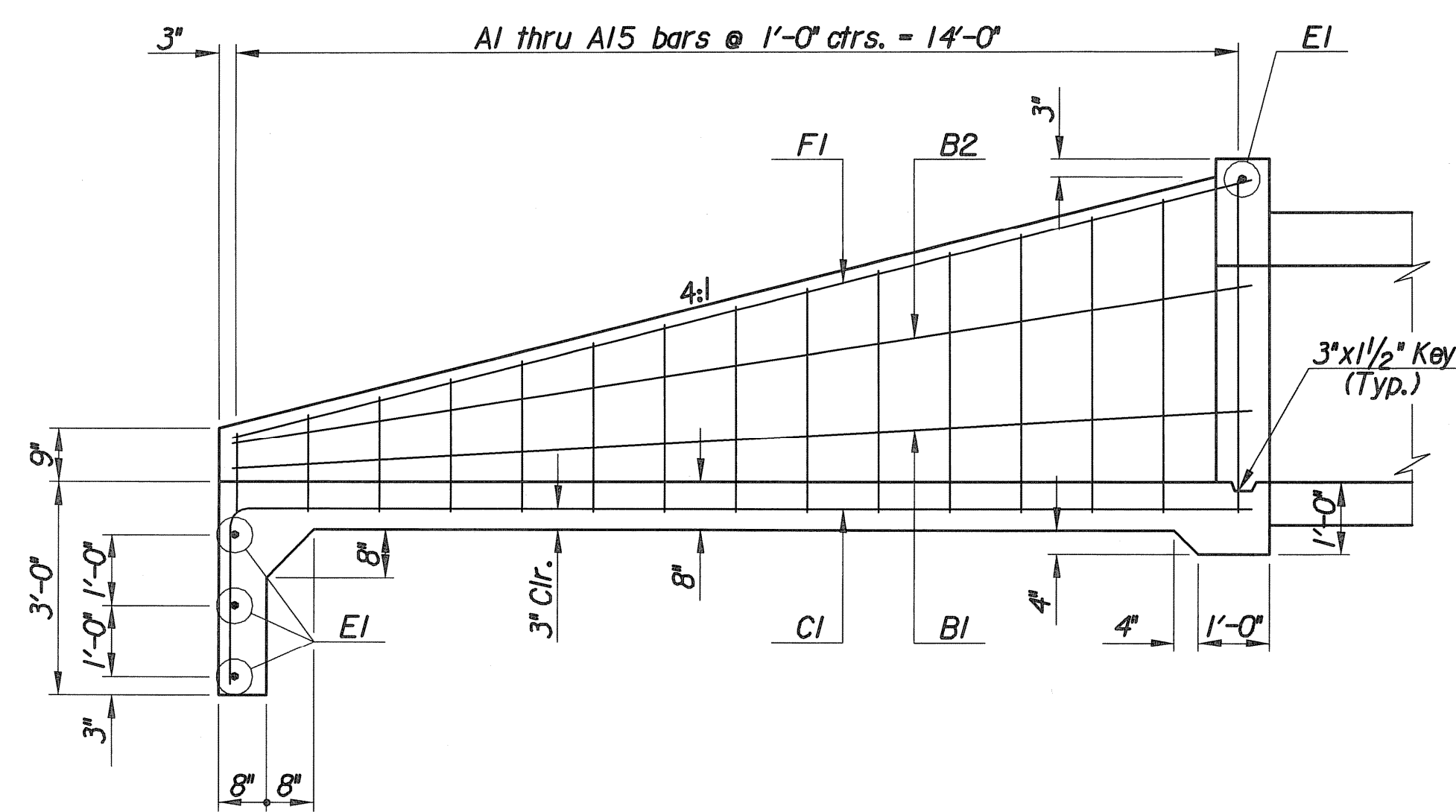


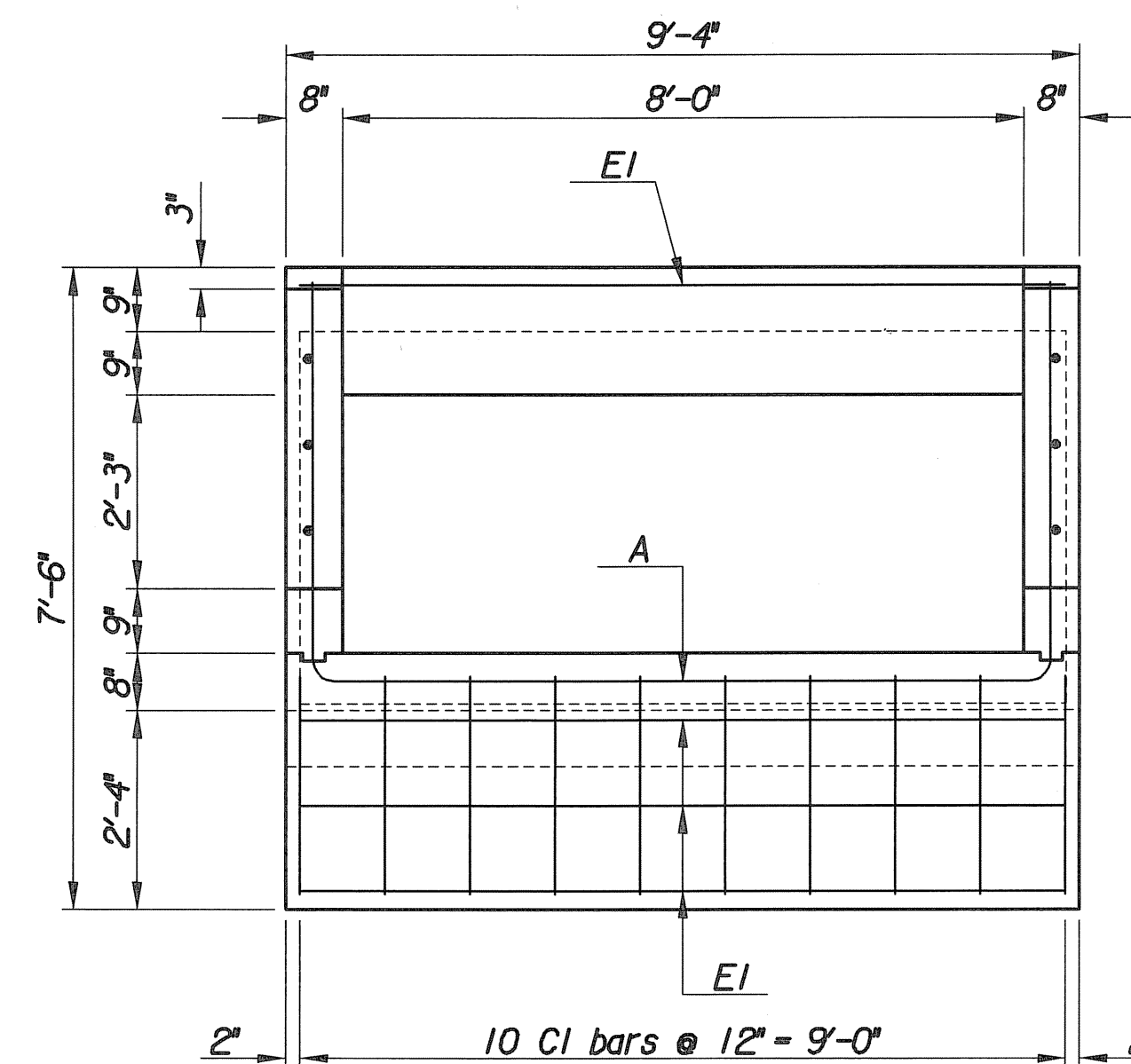
PLAN



BENDING DIAGRAMS



SECTION



FRONT

REINFORCING SCHEDULE				
Mark	Shape	No.	Length	Weight
A1		1	11'-2"	7.46
A2		1	11'-8"	7.79
A3		1	12'-2"	8.13
A4		1	12'-8"	8.46
A5		1	13'-2"	8.80
A6		1	13'-8"	9.13
A7		1	14'-2"	9.46
A8		1	14'-8"	9.80
A9		1	15'-2"	10.13
A10		1	15'-8"	10.47
A11		1	16'-2"	10.80
A12		1	16'-8"	11.13
A13		1	17'-2"	11.47
A14		1	17'-8"	11.80
A15		1	18'-2"	12.14
B1		2	14'-4"	19.15
B2		2	14'-6"	19.37
C1		10	16'-11"	113.00
E1		4	9'-0"	24.05
F1		2	14'-9"	19.71

* BILL OF MATERIALS	
Total Reinforcing Steel	342 Lbs.
Concrete	6.3 C.Y.

All Reinforcing Steel to be #4 bars.  
\* For Information Only

CONCRETE HEADWALL NOTES

CONCRETE: Bevel all exposed edges with a 3/4" triangular mounding or finish with an approved edging tool. Concrete shall be as per City of Wichita Standard Specifications for concrete paving mix except that it shall have a minimum 28 day compressive strength of 4000 p.s.i.

REINFORCING STEEL: All dimensions relative to reinforcing steel are to centerline of bar unless otherwise noted. All reinforcing steel shall conform to A.S.T.M. Designation A615 Grade 60 and shall be epoxy coated. All clearances shall be 2" unless otherwise noted.

PAYMENT: Payment shall be paid per linear foot as "Precast 8'x3' R.C.B.".

Plotted By: mib Date: 12/17/2013 4:11:54 PM  
FILE: I:\2012\2568\2568-WingDetail.dgn

	No.	Revision	By	Date
	MAIZE ROAD PAVING AND DRAINAGE IMPROVEMENTS LOT 1, NEWMARKET V ADDITION <b>WING DETAILS</b> GARY JANZEN, P.E.—CITY ENGINEER CITY OF WICHITA PROJECT NO. 472-84607			
			PROFESSIONAL ENGINEERING CONSULTANTS, P.A. 303 SOUTH TOPEKA WICHITA, KS 67202 316-262-2691 www.pec1.com	
	Designed by	MLB	Job No.	12568
Drawn by	WLL	Date	September 2013	