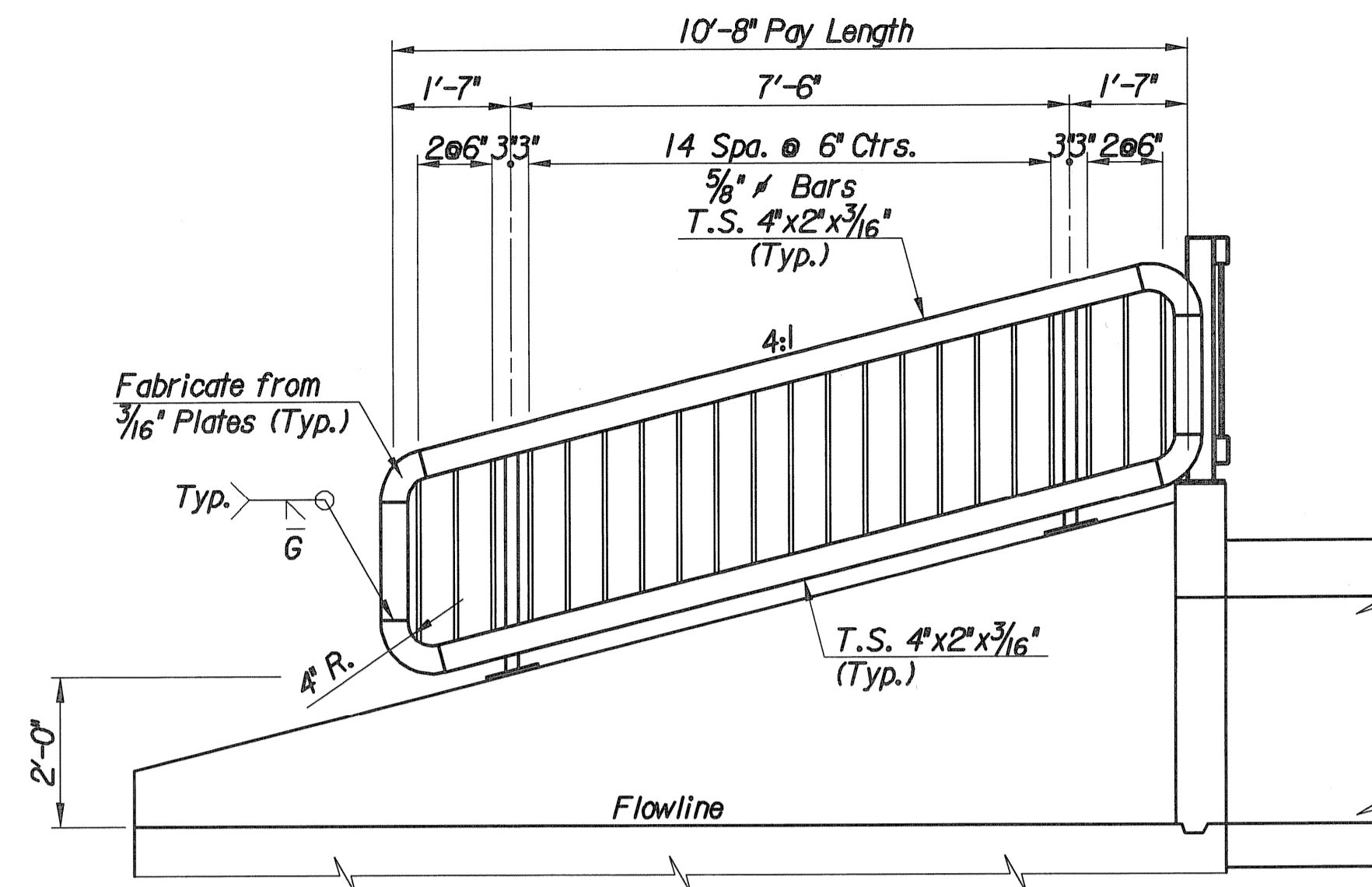
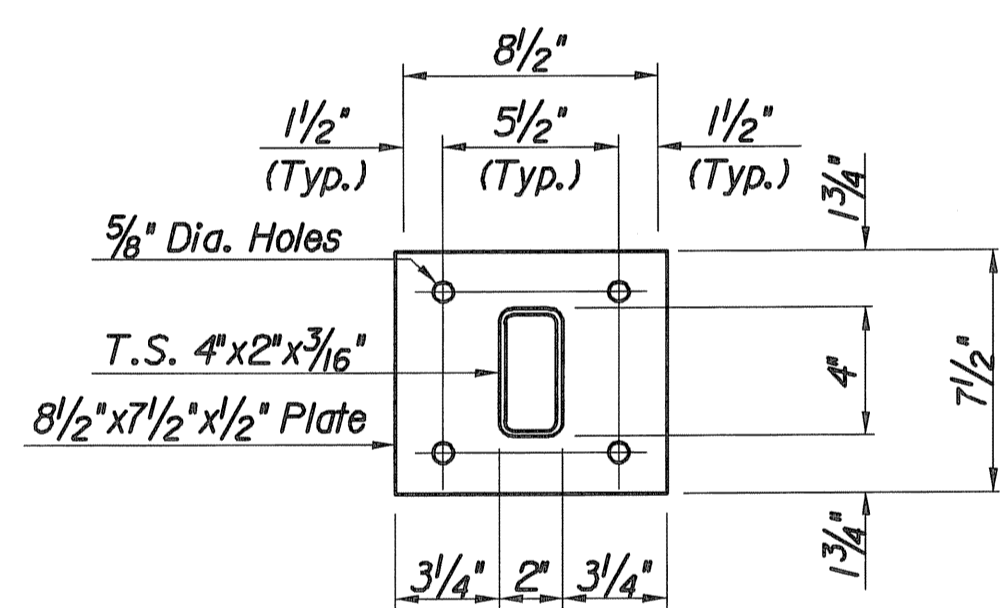


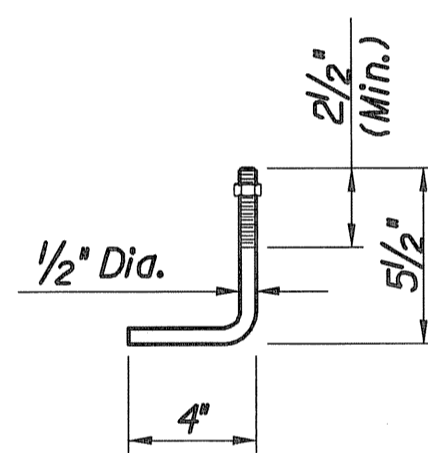
HANDRAIL ELEVATION ON HEADWALL



HANDRAIL ELEVATION ON EACH WING



BASE PLATE  
6 Required

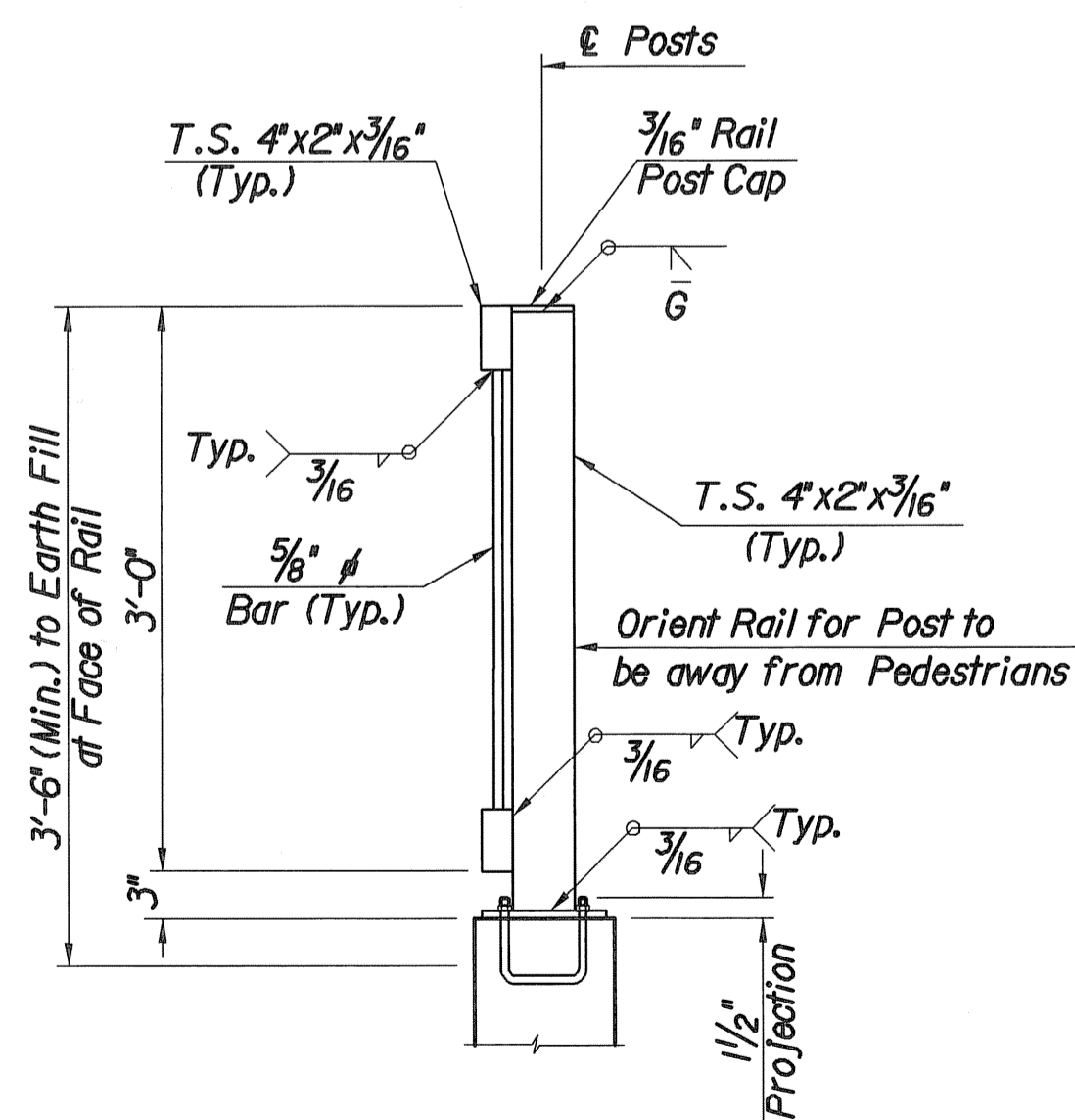


Galvanized (ASTM A153)

(May substitute expandable anchor bolts when approved by the Engineer)

ANCHOR BOLT

(Orient to provide min. 2" edge clearance to either hubguard face or adjacent bolts)



SECTION A-A

Note:  
Rail Post on Hubguard shown,  
Rail Posts and End Posts not shown  
but similar controlling criteria.

GENERAL NOTES

The horizontal members of the rail and posts shall be hollow structural tubing. All structural steel and tubing shall comply to A.S.T.M. Designation A36.

Rail shall be fabricated in lengths shown.

Posts and bars shall be set vertical and shimmed if required.

The paint system shall be provided by Carboline; 350 Hanley Industrial Ct.; St. Louis, Mo. The application will be in accordance with the manufacturer's recommendations.

- The paint procedure is as follows:
1. Sandblast after fabrication.
  2. Apply two coats of Carboline 818 (2 mils per coat).
  3. Apply one topcoat of Sub-sil B (Color-Black #C900).
- An approved substitution of the total paint system will be allowed with the approval of the Engineer.

Material and construction shall conform to the Structural Welding Code A.W.S. D1.1-01.

Shop details must be submitted and approved by the Engineer.

SUMMARY OF QUANTITIES		
Item	Quantity	Unit
Handrail (Steel) (Pedestrian)	30.5	L.F.

	No.	Revision	By	Date
	MAIZE ROAD PAVING AND DRAINAGE IMPROVEMENTS LOT 1, NEWMARKET V ADDITION			
	<b>HANDRAIL DETAILS</b> GARY JANZEN, P.E.—CITY ENGINEER CITY OF WICHITA PROJECT NO. 472-84607			
	PROFESSIONAL ENGINEERING CONSULTANTS, P.A. 303 SOUTH TOPEKA WICHITA, KS 67202 316-262-2891 www.pec1.com			
Designed by	MLB	Job No.	12568	Sht. 33 of 65
Drawn by	WLL	Date	September 2013	