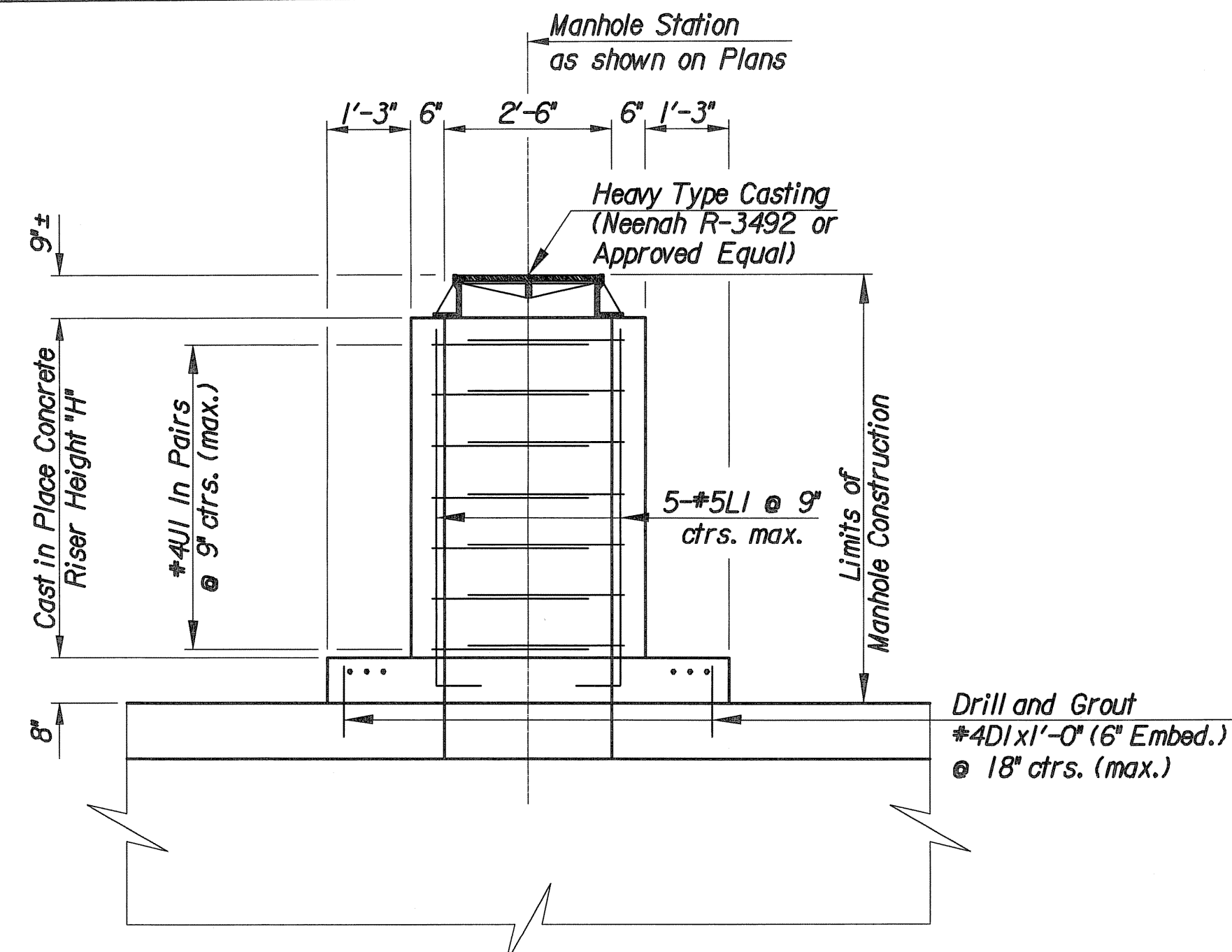
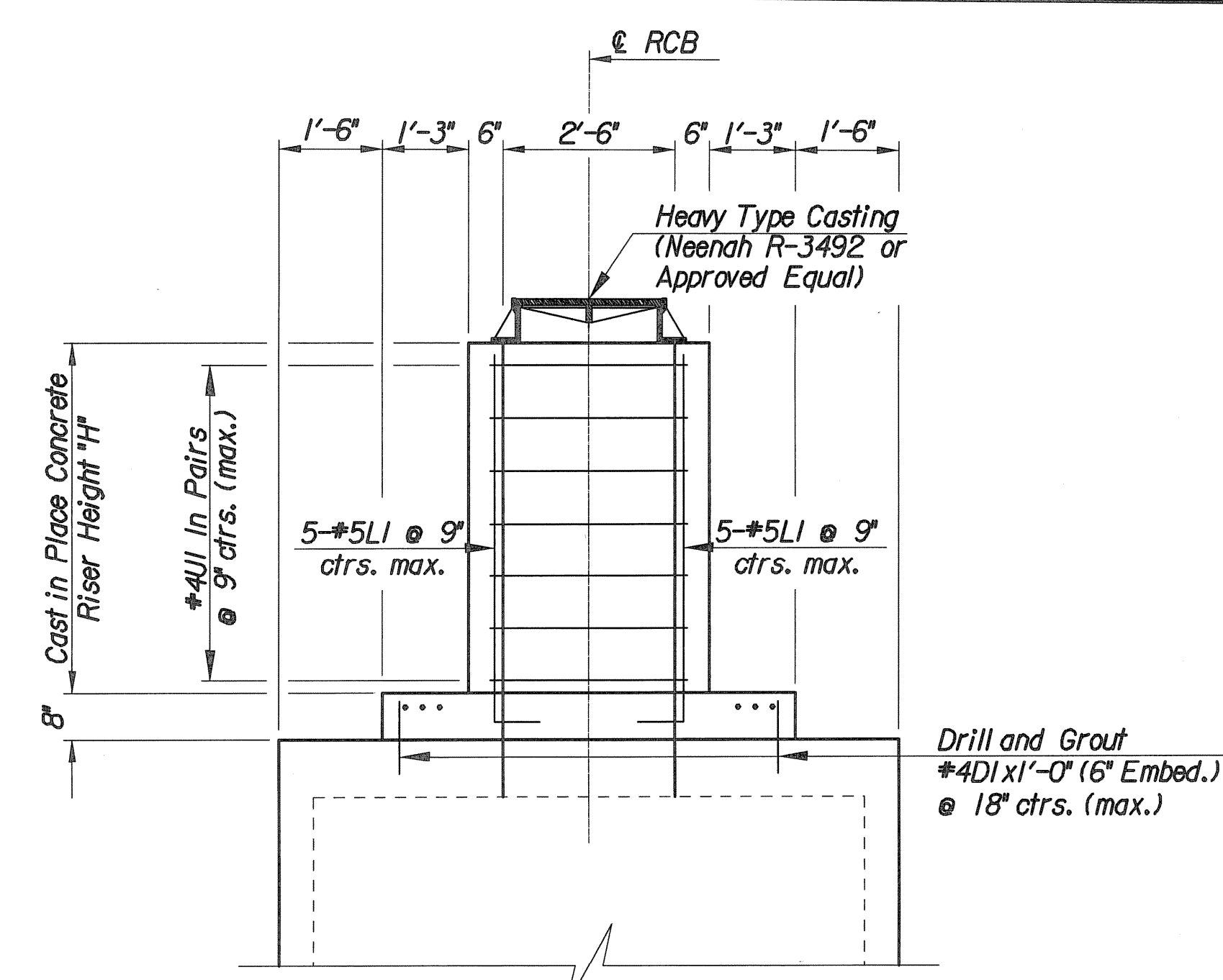


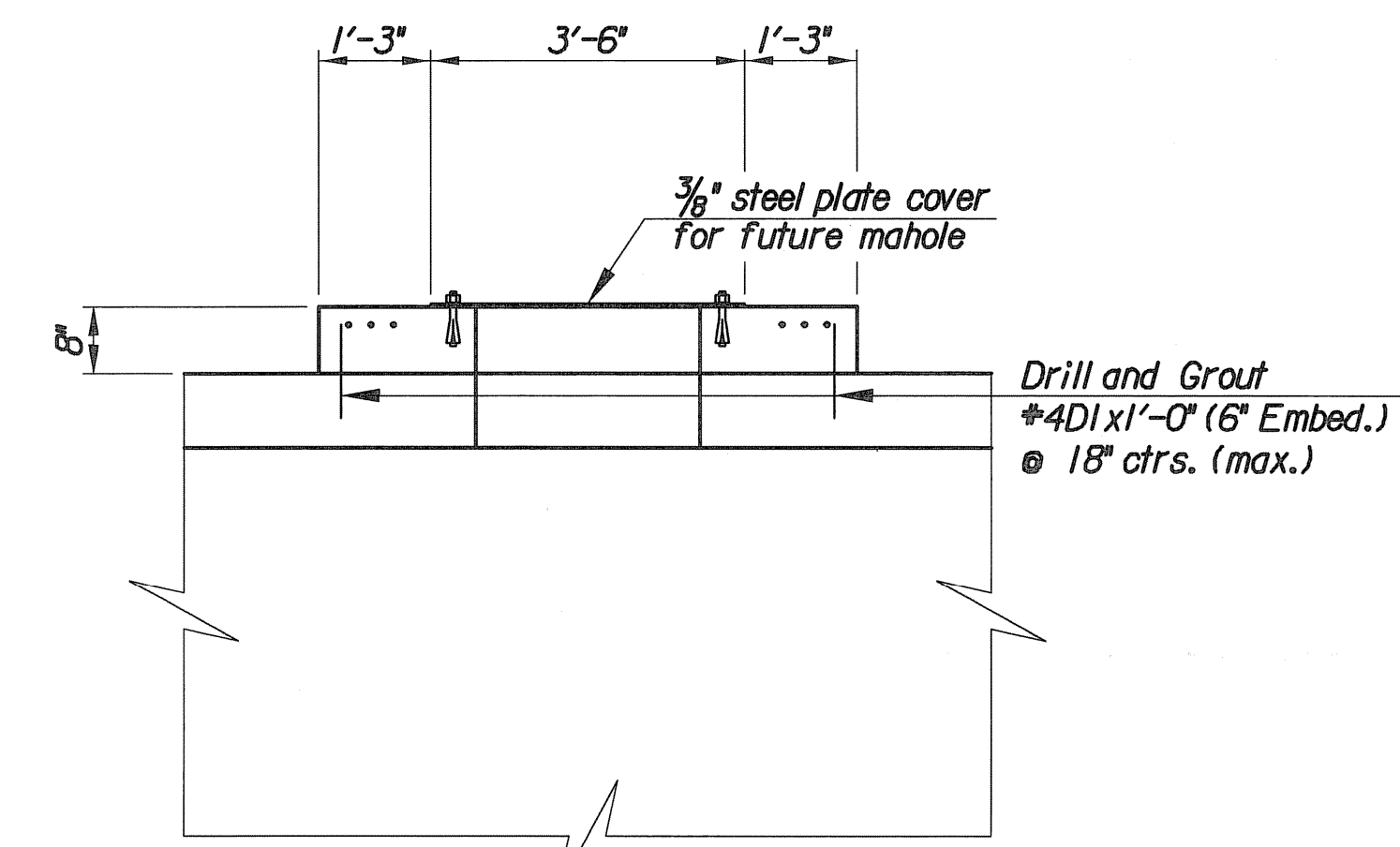
TYPICAL RCB MANHOLE



SECTION A-A
(Manholes 2, 3, 4, 5 and 6)



SECTION B-B
(Manholes 2, 3, 4, 5 and 6)



SECTION A-A
(Manhole 1)

GENERAL NOTE

Use Concrete Grade 3.0 throughout. All exposed edges shall be finished with an edging tool.

At the contractor's option, Concrete Grade 3.0 (AE) or mix used in concrete pavement may be used throughout.

The top of the manhole shall be sloped slightly to approximately fit the ground line or other conditions as directed by the Engineer.

All castings shall be gray iron and shall comply with the Standard Specifications.

The Contractor has the option of using precast manholes, as approved by the Engineer.

Structural steel plate shall meet ASTM A36M designation. Plates shall be anchored down 3 in. from each edge at each plate corner.

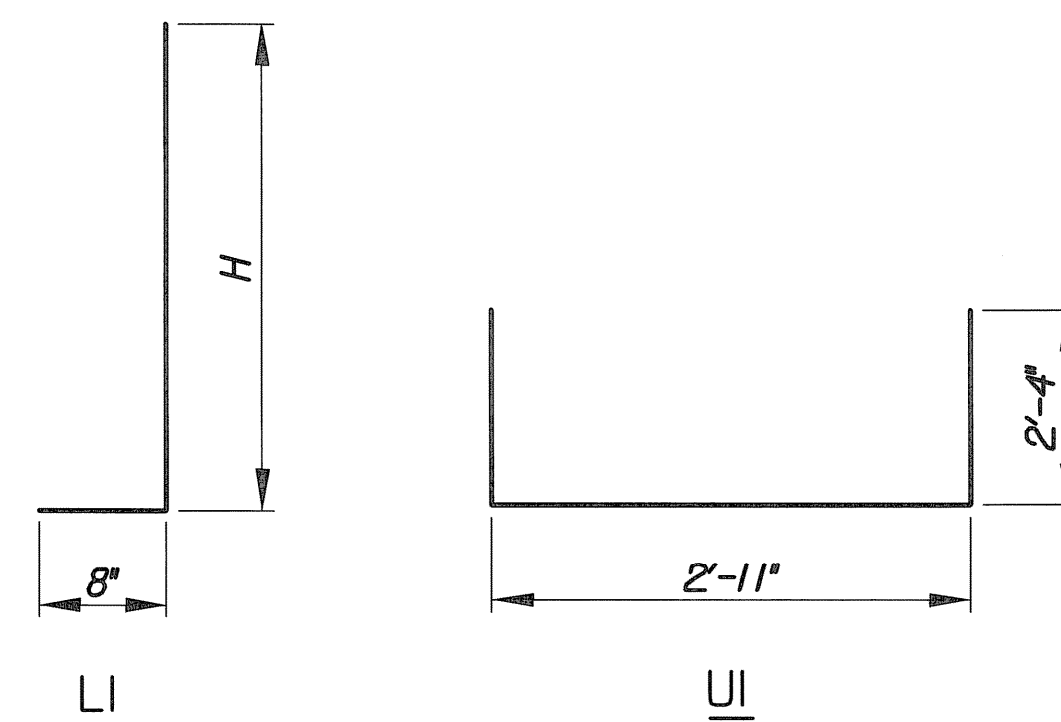
REINFORCING STEEL					
Straight Bars			Bent Bars		
Mark	Size	Length	Mark	Size	Length
DI	#4	1'-0"	UI	#4	7'-7"
HI	#5	5'-8"	LI	#5	

* BILL OF MATERIALS			
Item	Quantity	Unit	
Concrete	4.8	C.Y.	
Reinforcing Steel (Grade 60) (Epoxy Coated)	630	Lbs.	

* For Information Only (Total for Manholes 2-6)

SCHEDULE OF MANHOLES									
No.	RCB Station	H	⊙	#4DI Bars	#5HI Bars	#4UI Bars	#5LI Bars	Concrete C.Y.	Reinf. Steel Lbs.
1	12+51.28	*	*	16	12	*	*	0.77	82
2	12+69.47	9 1/2"	1'-5 1/2"	16	12	4	16	0.94	127
3	13+96.78	1'-4 1/2"	2'-0 1/2"	16	12	6	16	1.07	146
4	15+60.47	5 1/2"	1'-1 1/2"	16	12	2	16	0.87	111
5	16+39.28	6"	1'-2"	16	12	2	16	0.88	112
6	17+36.28	1'-1 1/2"	1'-9 1/2"	16	12	4	16	1.02	132

* Future (By Others) (Not Included in Contract)



BENDING DIAGRAMS

No.		Revision		By		Date	
MAIZE ROAD PAVING AND DRAINAGE IMPROVEMENTS LOT 1, NEWMARKET V ADDITION MANHOLE DETAILS GARY JANZEN, P.E.-CITY ENGINEER CITY OF WICHITA PROJECT NO. 472-84607							
Designed by		MLB		Job No.		12568	
Drawn by		WLL		Date		September 2013	

Plotted By: mib Date: 12/17/2013 4:15:56 PM
 FILE: I:\2012\2568-Manhole_access.dgn