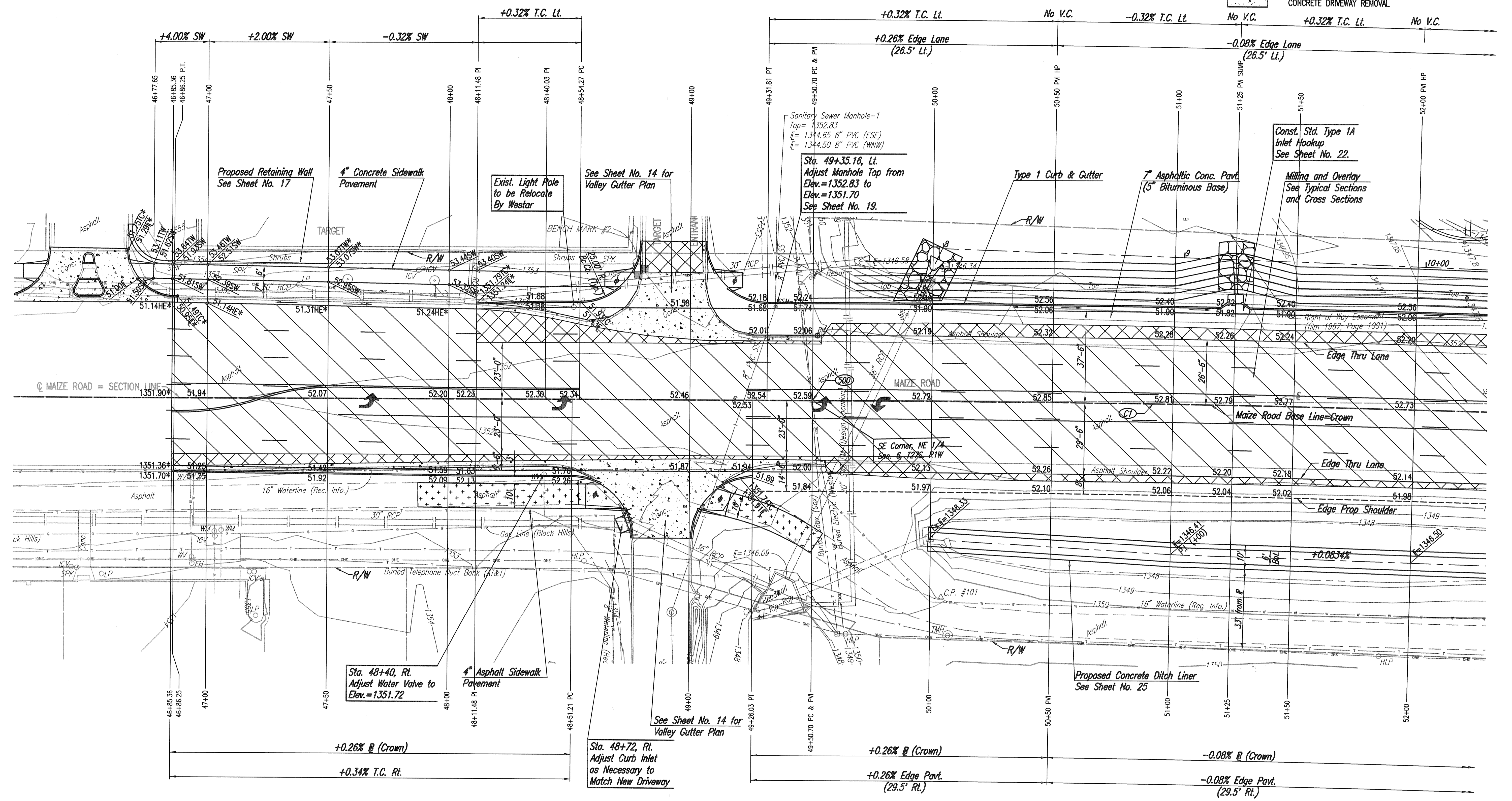


500 SE Corner, NE 1/4, Sec. 6, T27S, R1W =
Maize Rd. Sta. 49+50.70

LEGEND

- MILLING AND OVERLAY
- ASPHALT PAVEMENT REMOVAL
- ASPHALT SIDEWALK REMOVAL AND REPLACEMENT
- CONCRETE DRIVEWAY REMOVAL

SCALE: 0 20 40



Sta. 48+40, Rt.
Adjust Water Valve to
Elev.=1351.72

Sta. 48+72, Rt.
Adjust Curb Inlet
as Necessary to
Match New Driveway

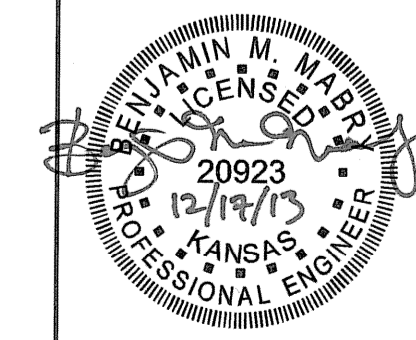
Sanitary Sewer Manhole-1
Top=1352.83
E=1344.65 8" PVC (ESE)
E=1344.50 8" PVC (WNW)

Sta. 49+35.16, Lt.
Adjust Manhole Top from
Elev.=1352.83 to
Elev.=1351.70
See Sheet No. 19.

Curve Data (C1)
 P.I. Sta. 52+82.25 (Bk.)=
 P.I. Sta. 52+82.06 (Ahd.)
 Δ= 03°18'52"
 D= 00°30'00"
 R= 11,459.16'
 T= 331.55'
 L= 662.91'
 E= 4.80'
 Superelevation= N.C.

* Match Existing
 Construct Sidewalk Ramp, See Sheet No. 18.

Saved 12-09-2013 2:42:35 PM by BJS
 Plot Scale 1:20 12-17-2013 1:10:25 PM by BJS
 G:\2012\12568\000_001\2568-001-07C PLAN-MAIZE RD



No.	Revision	By	Date

MAIZE ROAD PAVING AND DRAINAGE IMPROVEMENTS
 LOT 1, BLOCK 1, NEWMARKET V ADDITION
MAIZE ROAD
 STA. 46+85.36 TO STA. 52+00.00
 GARY JANZEN, P.E.-CITY ENGINEER
 CITY OF WICHITA PROJECT NO. 472-84607

PEC PROFESSIONAL ENGINEERING CONSULTANTS, P.A.
 303 SOUTH TOPEKA WICHITA, KS 67202
 316-262-2691 www.pec1.com

Designed by CSB Job No. 35-12568-000/001
 Drawn by BJS Date September 2013 Sht. 7 of 65