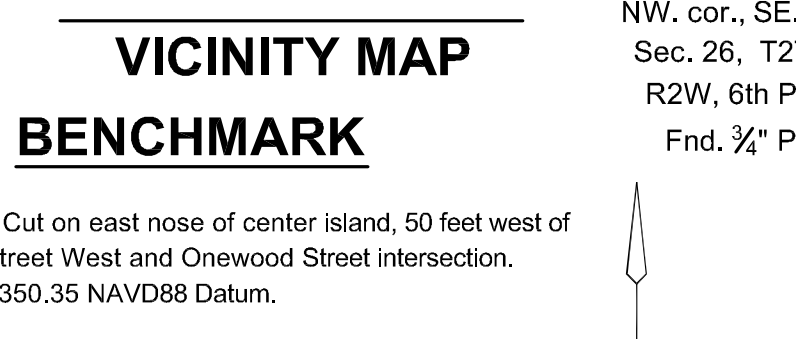
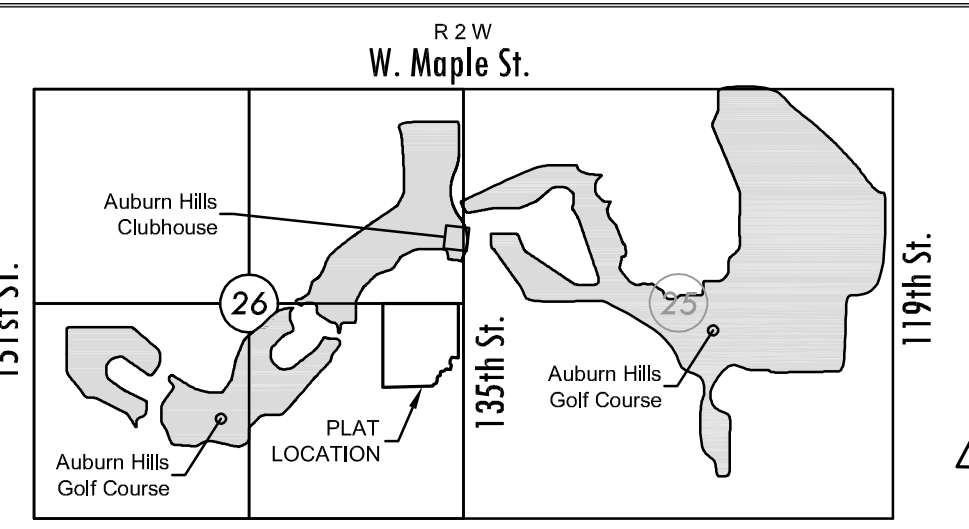


# FINAL PLAT

## COURTYARDS AT AUBURN HILLS

### AN ADDITION TO WICHITA, SEDGWICK COUNTY, KANSAS



**MINIMUM PAD ELEVATIONS  
LOWEST OPENINGS**

LOT	BLOCK	ELEVATION NAVD88
35	1	1349.7
36	1	1350.2
37	1	1348.7
38	1	1348.1
39	1	1347.6
40	1	1347.6
41	1	1347.2
42	1	1346.8
43	1	1346.3
44	1	1346.0
45	1	1346.0
46	1	1353.4

**LINE TABLE**

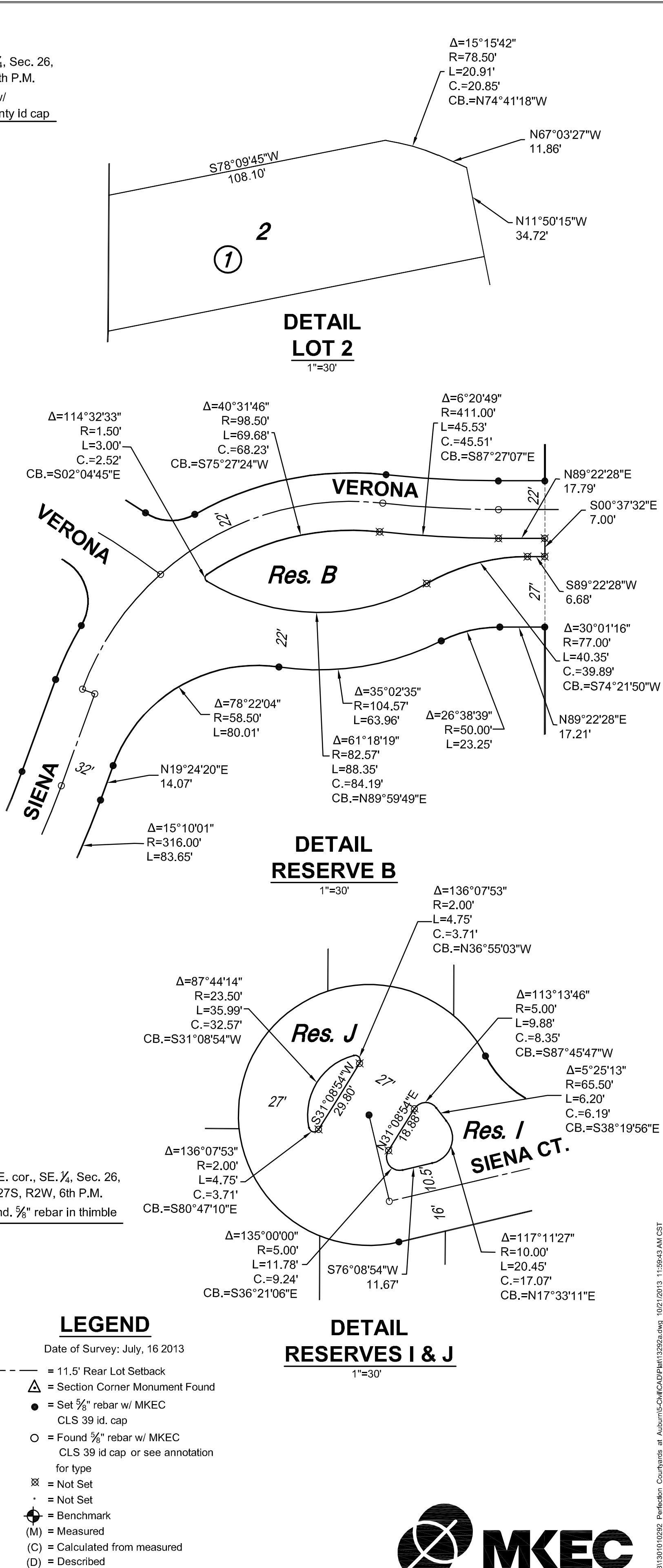
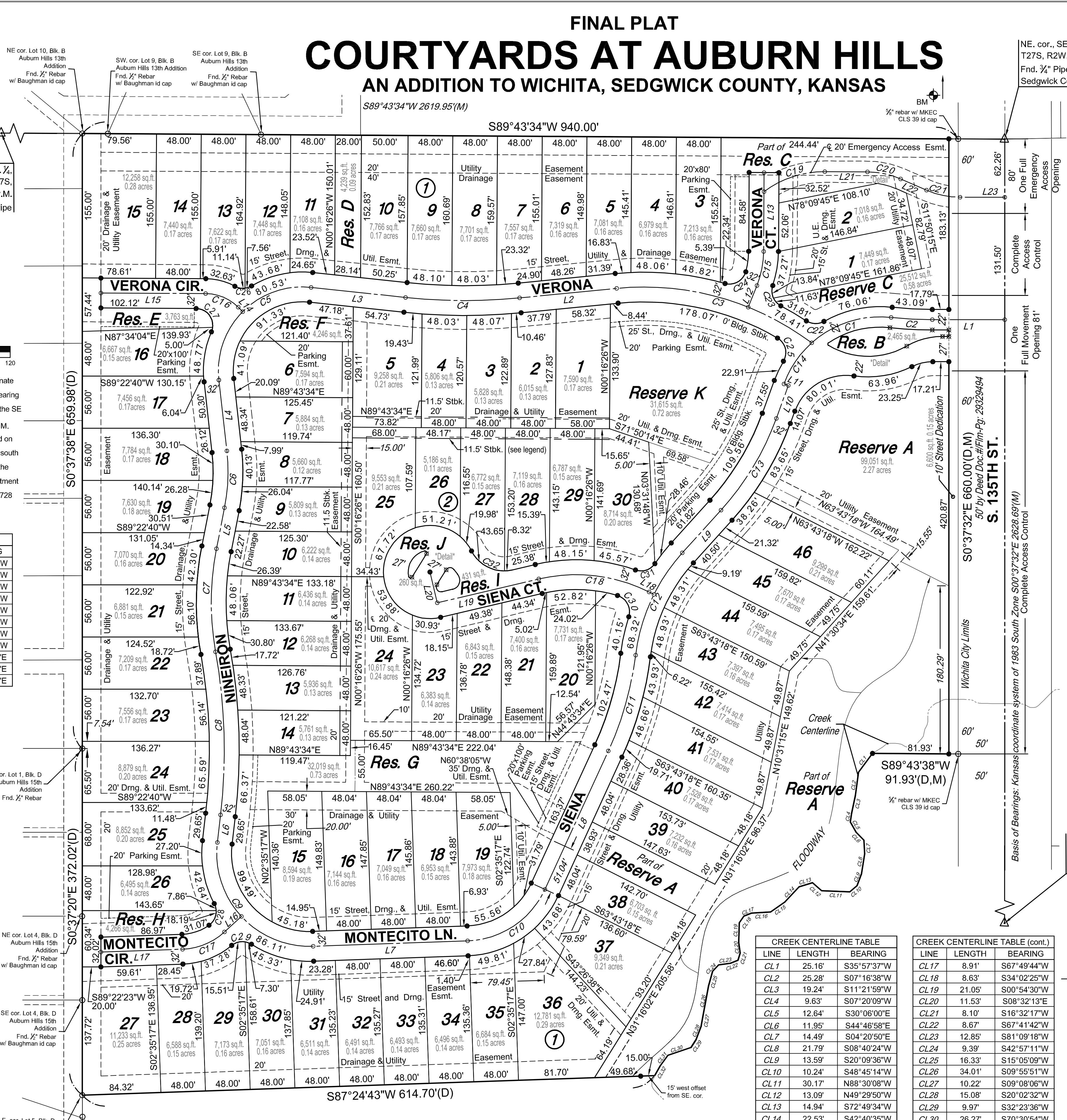
LINE	LENGTH	BEARING
L1	77.79'	N89°22'28"E
L2	104.55'	S83°44'51"W
L3	101.92'	N84°32'01"W
L4	76.42'	S07°03'47"E
L5	44.86'	S10°29'25"W
L6	29.65'	S06°02'29"W
L7	165.88'	N87°21'41"E
L8	163.37'	N24°00'32"E
L9	61.82'	N41°30'34"E
L10	37.55'	N19°24'20"W
L11	5.00'	N70°35'40"W
L12	24.99'	N21°15'20"E

**CENTERLINE CURVE TABLE**

CURVE	LENGTH	RADIUS	CHORD	BEARING	DELTA
C1	92.13'	109.50'	89.43'	S71°37'08"W	48°12'19"
C2	44.31'	400.00'	44.29'	S87°27'08"E	6°20'49"
C3	222.44'	300.00'	217.38'	N75°00'40"W	42°28'58"
C4	122.72'	600.00'	122.51'	N89°36'25"E	11°43'08"
C5	161.05'	900.00'	140.41'	S44°12'06"W	102°31'46"
C6	61.27'	200.00'	61.03'	N01°42'49"E	17°33'12"
C7	111.18'	300.00'	110.55'	S00°07'37"E	21°14'04"
C8	175.78'	600.00'	175.15'	N02°21'05"W	16°47'08"
C9	172.23'	100.00'	151.72'	S43°17'55"E	98°40'48"
C10	105.04'	95.00'	99.77'	N55°41'07"E	63°21'08"
C11	107.38'	350.00'	106.96'	N15°13'12"E	17°34'40"
C12	122.45'	200.00'	120.54'	S23°58'13"W	35°04'42"
C13	115.74'	300.00'	115.02'	N30°27'27"E	22°06'14"
C14	53.72'	100.00'	53.19'	S33°27'39"W	28°08'39"
C15	37.58'	100.00'	37.36'	N10°29'27"E	21°31'46"
C16	38.81'	50.00'	37.84'	N88°02'10"W	44°28'31"
C17	49.74'	70.00'	48.70'	N67°03'24"E	40°42'38"
C18	121.73'	175.00'	119.29'	N83°55'26"W	39°51'21"
C19	69.91'	108.17'	68.70'	S71°12'36"W	37°01'58"
C20	36.47'	90.00'	36.22'	N78°39'56"W	23°12'58"
C21	37.02'	90.00'	36.76'	S78°50'29"E	23°34'04"

**LOT/RESERVE CURVE TABLE**

CURVE	LENGTH	RADIUS	CHORD	BEARING	DELTA
C22	19.88'	18.00'	18.88'	S88°48'19"E	63°16'31"
C23	25.47'	18.00'	23.40'	S22°24'04"E	81°04'13"
C24	28.39'	18.00'	25.54'	N60°09'11"E	90°22'57"
C25	28.47'	18.00'	25.59'	N15°00'49"W	90°37'36"
C26	18.70'	18.00'	17.87'	N88°17'26"E	59°31'24"
C27	35.45'	18.00'	29.99'	N33°51'18"W	112°50'14"
C28	26.05'	18.00'	23.83'	N12°59'52"E	82°54'18"
C29	22.81'	18.00'	21.32'	S85°44'54"W	72°36'51"
C30	28.72'	18.00'	25.77'	N28°38'10"W	91°25'59"
C31	23.54'	18.00'	21.90'	N71°25'06"W	74°55'06"
C32	51.97'	39.00'	48.21'	S65°40'32"E	76°21'07"



**LEGEND**

Date of Survey: July, 16 2013

- △ = 11.5' Rear Lot Setback
- = Section Corner Monument Found
- = Set 5/8" rebar w/ MKEC CLS 39 id cap
- = Found 5/8" rebar w/ MKEC CLS 39 id cap or see annotation for type
- ⊗ = Not Set
- ⊙ = Not Set
- ⊕ = Benchmark
- (M) = Measured
- (C) = Calculated from measured
- (D) = Described
- (CD) = Calculated from Described
- (P) = Platted

