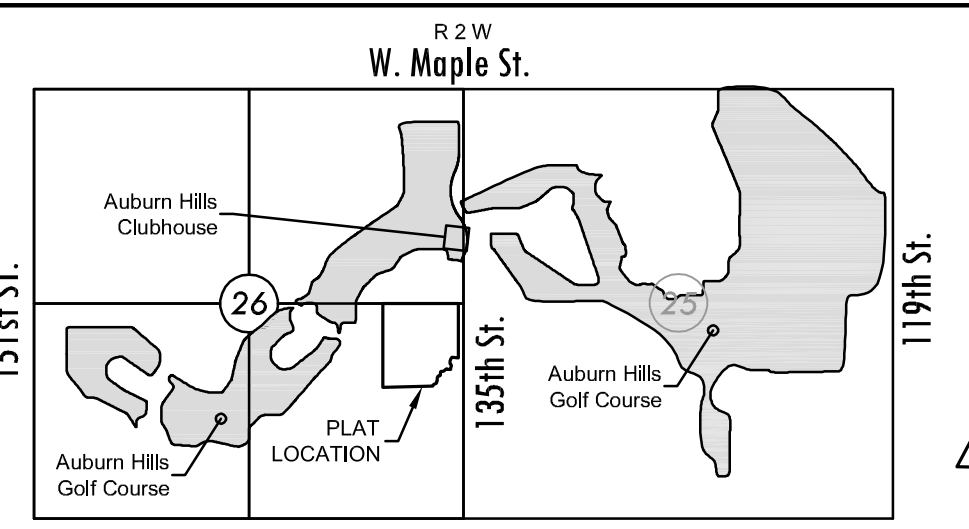


FINAL PLAT

COURTYARDS AT AUBURN HILLS

AN ADDITION TO WICHITA, SEDGWICK COUNTY, KANSAS



VICINITY MAP
BENCHMARK

Square Cut on east nose of center island, 50 feet west of 135th Street west and Onewood Street intersection. Elev.=1350.35 NAVD88 Datum.

MINIMUM PAD ELEVATIONS
LOWEST OPENINGS

LOT	BLOCK	ELEVATION NAVD88
35	1	1349.7
36	1	1350.2
37	1	1348.7
38	1	1348.1
39	1	1347.6
40	1	1347.6
41	1	1347.2
42	1	1346.8
43	1	1346.3
44	1	1346.0
45	1	1346.0
46	1	1353.4

LINE TABLE

LINE	LENGTH	BEARING
L1	77.79'	N89°22'28"E
L2	104.55'	S83°44'51"W
L3	101.92'	N84°32'01"W
L4	76.42'	S07°03'47"E
L5	44.86'	S10°29'25"W
L6	29.65'	S06°02'29"W
L7	165.88'	N87°21'41"E
L8	163.37'	N24°00'32"E
L9	61.82'	N41°30'34"E
L10	37.55'	N19°24'20"W
L11	5.00'	N70°35'40"W
L12	24.99'	N21°15'20"E

LINE TABLE

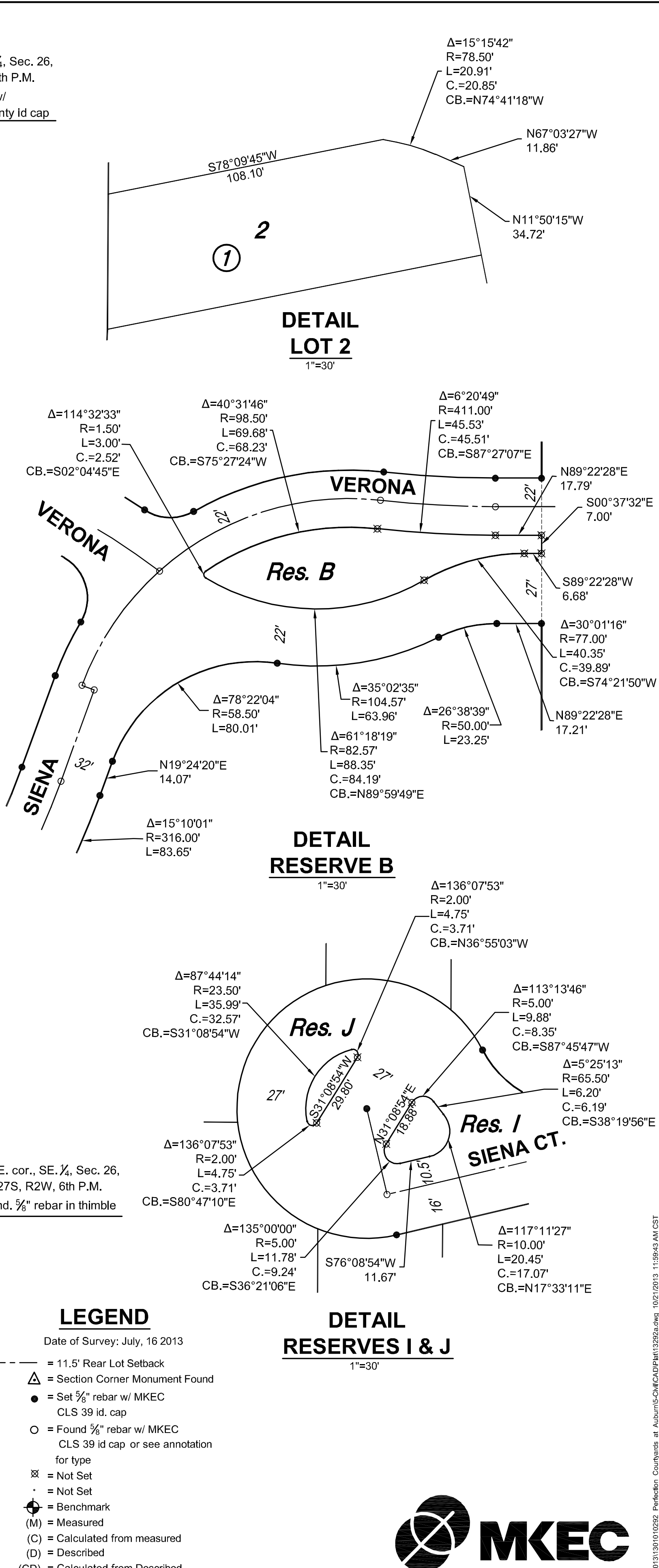
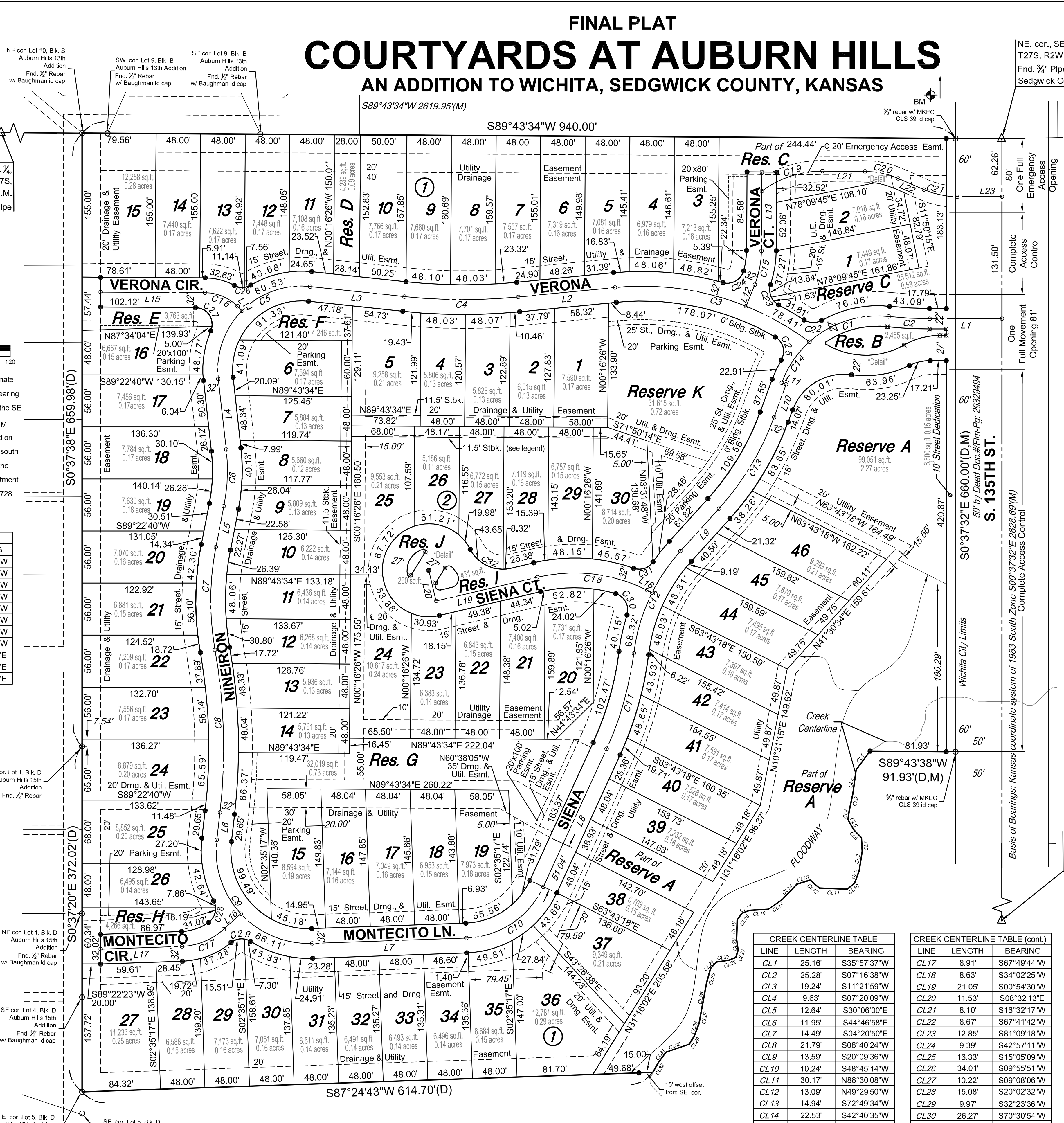
LINE	LENGTH	BEARING
L13	84.58'	N00°16'26"W
L14	6.78'	N45°47'54"W
L15	112.41'	S89°43'34"W
L16	24.67'	S46°42'05"W
L17	87.52'	S87°24'43"W
L18	5.82'	N63°59'45"W
L19	111.87'	S76°08'54"W
L20	34.00'	N13°51'06"W
L21	45.90'	N89°43'34"E
L22	30.39'	S67°03'27"E
L23	47.96'	N89°22'29"E

CENTERLINE CURVE TABLE

CURVE	LENGTH	RADIUS	CHORD	BEARING	DELTA
C1	92.13'	109.50'	89.43'	S71°37'08"W	48°12'19"
C2	44.31'	400.00'	44.29'	S87°27'08"E	6°20'49"
C3	222.44'	300.00'	217.38'	N75°00'40"W	42°28'58"
C4	122.72'	600.00'	122.51'	N89°36'25"E	11°43'08"
C5	161.05'	900.00'	140.41'	S44°12'06"W	102°31'46"
C6	61.27'	200.00'	61.03'	N01°42'49"E	17°33'12"
C7	111.18'	300.00'	110.55'	S00°07'37"E	21°14'04"
C8	175.78'	600.00'	175.15'	N02°21'05"W	16°47'08"
C9	172.23'	100.00'	151.72'	S43°17'55"E	98°40'48"
C10	105.04'	95.00'	99.77'	N55°41'07"E	63°21'08"
C11	107.38'	350.00'	106.96'	N15°13'12"E	17°34'40"
C12	122.45'	200.00'	120.54'	S23°58'13"W	35°04'42"
C13	115.74'	300.00'	115.02'	N30°27'27"E	22°06'14"
C14	53.72'	100.00'	53.19'	S33°27'39"W	28°08'39"
C15	37.58'	100.00'	37.36'	N10°29'27"E	21°31'46"
C16	38.81'	50.00'	37.84'	N88°02'10"W	44°28'31"
C17	49.74'	70.00'	48.70'	N67°03'24"E	40°42'38"
C18	121.73'	175.00'	119.29'	N83°55'26"W	39°51'21"
C19	69.91'	108.17'	68.70'	S71°12'36"W	37°01'58"
C20	36.47'	90.00'	36.22'	N78°39'56"W	23°12'58"
C21	37.02'	90.00'	36.76'	S78°50'29"E	23°34'04"

LOT/RESERVE CURVE TABLE

CURVE	LENGTH	RADIUS	CHORD	BEARING	DELTA
C22	19.88'	18.00'	18.88'	S88°48'19"E	63°16'31"
C23	25.47'	18.00'	23.40'	S22°24'04"E	81°04'13"
C24	28.39'	18.00'	25.54'	N60°09'11"E	90°22'57"
C25	28.47'	18.00'	25.59'	N15°00'49"W	90°37'36"
C26	18.70'	18.00'	17.87'	N88°17'26"E	59°31'24"
C27	35.45'	18.00'	29.99'	N33°51'18"W	112°50'14"
C28	26.05'	18.00'	23.83'	N12°59'52"E	82°54'18"
C29	22.81'	18.00'	21.32'	S85°44'54"W	72°36'51"
C30	28.72'	18.00'	25.77'	N28°38'10"W	91°25'59"
C31	23.54'	18.00'	21.90'	N71°25'06"W	74°55'06"
C32	51.97'	39.00'	48.21'	S65°40'32"E	76°21'07"



LEGEND

Date of Survey: July, 16 2013

- △ = 11.5' Rear Lot Setback
- = Section Corner Monument Found
- = Set 5/8" rebar w/ MKEC CLS 39 id cap
- = Found 5/8" rebar w/ MKEC CLS 39 id cap or see annotation for type
- ⊗ = Not Set
- ⊙ = Not Set
- ⊕ = Benchmark
- (M) = Measured
- (C) = Calculated from measured
- (D) = Described
- (CD) = Calculated from Described
- (P) = Platted

