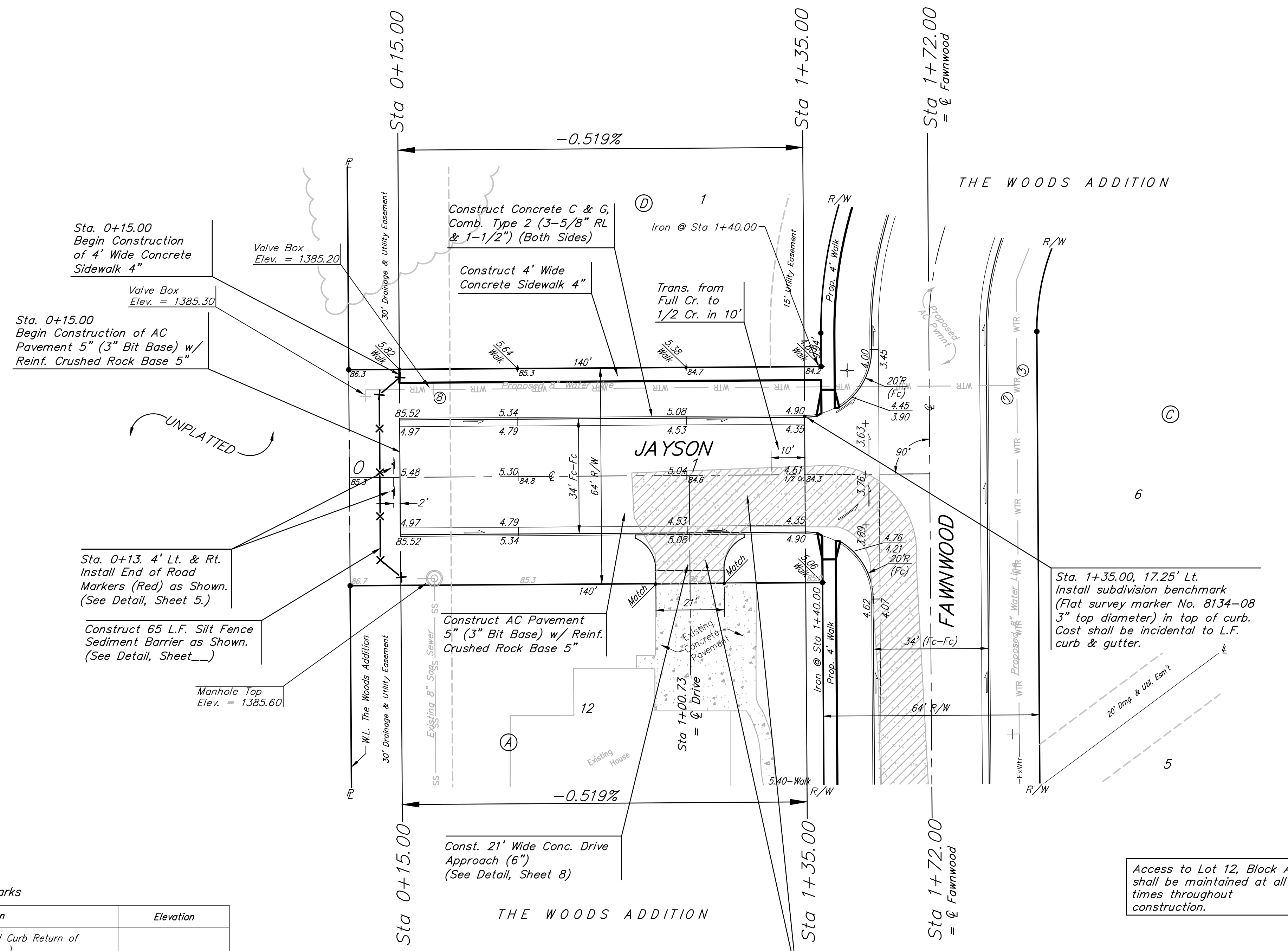
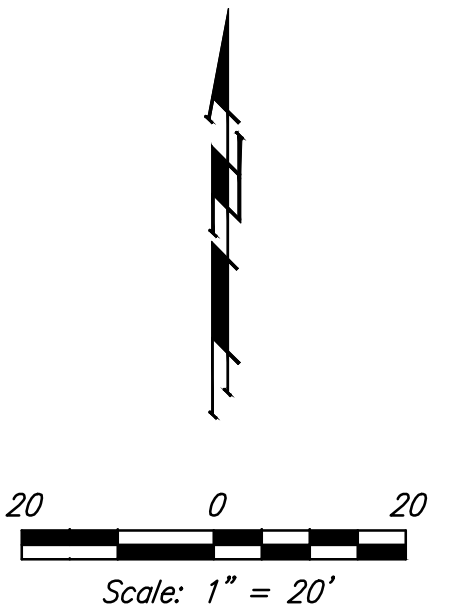


**Benchmarks:**  
 BM #1: City of Wichita Benchmark  
 Disc, top of curb at west end of curb  
 return, Northwest corner of  
 intersection of City View and Sheriac  
 Cir. in Shadow Woods Addition.  
 Elev. = 1386.66 NGVD29

BM #2: City of Wichita Benchmark  
 Disc, Top of curb by fire hydrant at  
 west end of curb return, Northwest  
 corner of intersection of Sheriac Cir.  
 and Sheriac Ct., South of SE corner  
 of Lot 13, Block B, Shadow Woods  
 Addition.  
 Elev. = 1392.11 NGVD29



Subdivision Bench Marks

Street & Station	Location Description	Elevation
Fawnwood Ct. (-----) 0+37.00, 14.25' Rt.	Adjacent to Fire Hydrant at NW End of N Curb Return of Fawnwood and Fawnwood Ct (-----).	
Jayson 1+35.00, 17.25' Lt.	Adjacent to Fire Hydrant at W End of N Curb Return of Fawnwood and Jayson	
Kennedy 0+37.00, 17.25' Lt.	Adjacent to Fire Hydrant at E End of N Curb Return of Fawnwood and Kennedy	

Access to Lot 12, Block A shall be maintained at all times throughout construction.

Remove Existing Asphalt Drive as Indicated. Cost Shall be Included in "Site Clearing"

**NOTE:** Roll Type Curb & Gutter (Type 2) to be constructed on the pavement shown on this sheet. Top of curb elevations are given for Full Height Curb (Type 4).

	<b>THE WOODS ADDITION - PHASE 4</b> <b>JAYSON</b> STA. 0+15.00 to STA. 1+35.00	
	<small>Baughman Company, P.A. 315 Ellis St., Wichita, KS 67211 P 316-262-7271 F 316-262-0149          ENGINEERING   SURVEYING   PLANNING   LANDSCAPE ARCHITECTURE</small>	
PROJECT NUMBER 472-84948	DESIGN AEG	DRAWN JAK
REVISIONS:	APPROVED DATE 8/08/13	SCALE 1" = 20' SHEET <b>13 OF 33</b>