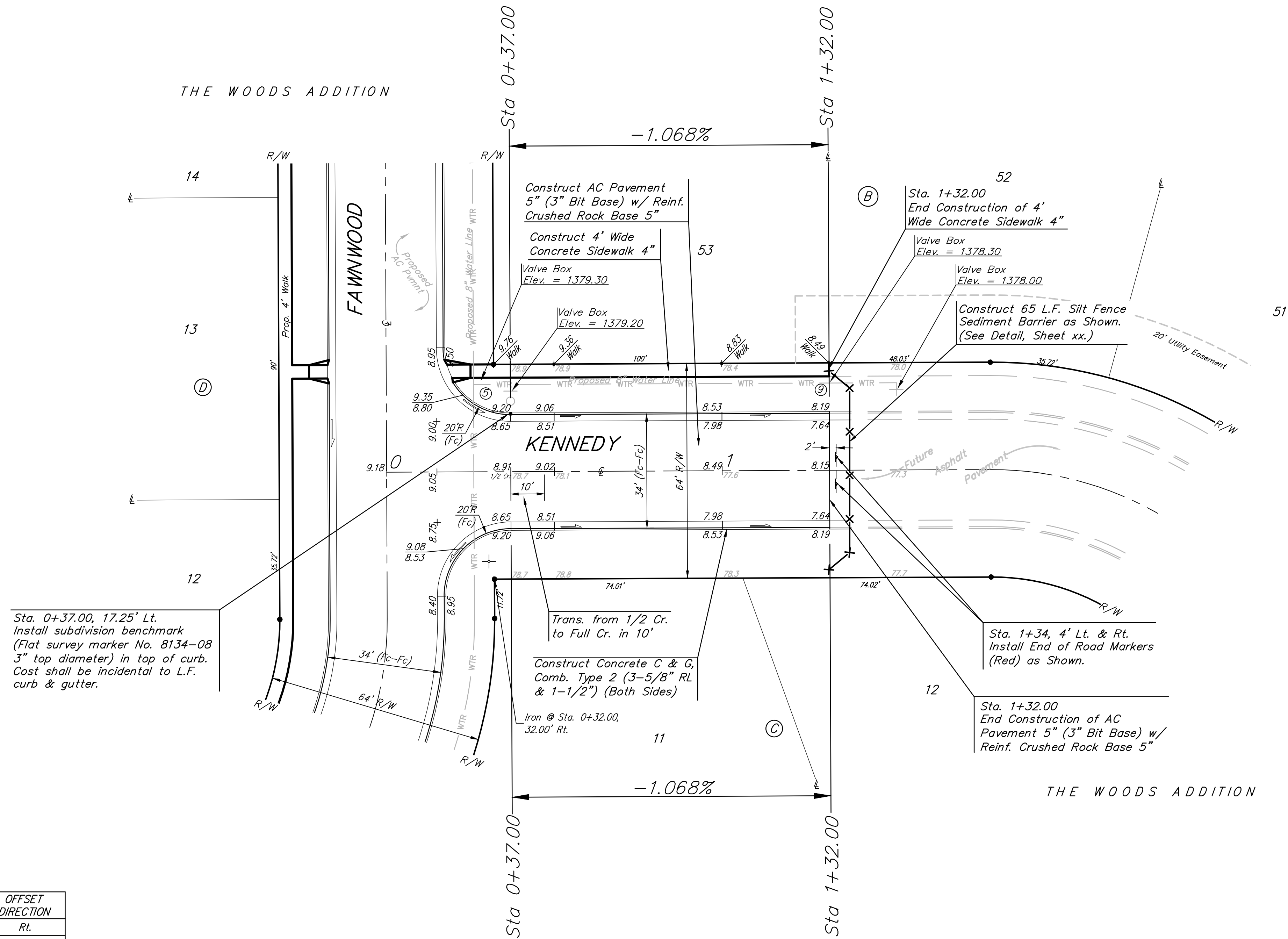
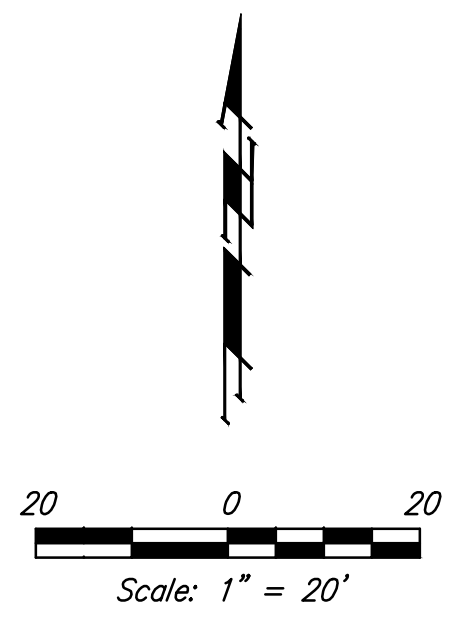


Benchmarks:
 BM #1: City of Wichita Benchmark
 Disc, top of curb at west end of curb
 return, Northwest corner of
 intersection of City View and Sheriac
 Cir. in Shadow Woods Addition.
 Elev. = 1386.66 NGVD29

BM #2: City of Wichita Benchmark
 Disc, Top of curb by fire hydrant at
 west end of curb return, Northwest
 corner of intersection of Sheriac Cir.
 and Sheriac Ct., South of SE corner
 of Lot 13, Block B, Shadow Woods
 Addition.
 Elev. = 1392.11 NGVD29



VALVE LOCATION TABLE

VALVE NUMBER	BASELINE STATION	OFFSET DISTANCE	OFFSET DIRECTION
1	20+71.83	26'-0"	Rt.
2	21+95.10	24'-0"	Rt.
3	21+97.10	26'-0"	Rt.
4	23+97.58	26'-0"	Rt.
5	23+99.58	24'-0"	Rt.
6	28+35.53	28'-0"	Rt.
7	29+51.53	26'-0"	Rt.
8	0+25.00	26'-0"	Lt.
9	1+32.00	26'-0"	Lt.

Paving contractor will be responsible to operate all water valves on the project, in the presence of the inspector, to ensure accessibility to the valves, and that all valves are left in the "ON" position when the project is completed."

NOTE: Roll Type Curb & Gutter (Type 2) to be constructed on the pavement shown on this sheet. Top of curb elevations are given for Full Height Curb (Type 4).

	THE WOODS ADDITION - PHASE 4 KENNEDY STA. 0+37.00 to STA. 1+32.00	
	<small>Baughman Company, P.A. 315 Ellis St., Wichita, KS 67211 P 316-262-2771 F 316-262-0149 ENGINEERING SURVEYING PLANNING LANDSCAPE ARCHITECTURE</small>	
PROJECT NUMBER 472-84948	DESIGN AEG	DRAWN JAK
REVISIONS:	APPROVED DATE 8/08/13	SCALE 1" = 20' SHEET 14 OF 33
<small>E:\Projects\The Woods Addition\Phase 4\Str. 13-05-E009\Street Plans.dwg</small>		