

PRIVATE PROJECT SANITARY SEWER PLAN TO SERVE CVS/pharmacy®

CITY OF WICHITA PROJECT NO.

CS#064718 STORE#10070 SWC E HARRY ST. AND S HILLSIDE AVE.
WICHITA, KS
SOUTHWEST CORNER OF HARRY STREET AND HILLSIDE STREET
ZONED: LC LIMITED COMMERCIAL
TAX ID#128340110100100

T.Mason - City of Wichita, Inspector
Release Date: 1/17/2014
APRosas 1/22/2014

PROJECT DIRECTORY

OWNER

CVS REALTY, CO.
1165 N CLARK ST SUITE 305
CHICAGO, IL 60610
(312) 953-6322
CONTACT: MR. RICHARD E. SMART

DEVELOPER

VELMEIR COMPANIES
5757 W. MAPLE, SUITE 800
WEST BLOOMFIELD, MI 48322
(248) 794-9768
CONTACT: MR. JIM COLLIER

ARCHITECT

NORR, LLC
719 GRISWOLD STREET
DETROIT, MI 48226
(313) 324-3100
CONTACT: MR. SCOTT ROBACH

CIVIL ENGINEER

PREMIER CIVIL ENGINEERING, LLC
308 TCW COURT
LAKE SAINT LOUIS, MO 63367
(314) 925-7452
CONTACT: MR. MATT FOGARTY

SURVEYOR

SAVOY COMPANY, P.A.
433 S. HYDRAULIC
WICHITA, KS 67211
(316) 265-0005
CONTACT: MR. MARK SAVOY

MUNICIPALITY

CITY OF WICHITA, KS

GEOTECHNICAL/ENVIRONMENTAL ENGINEER

TERRACON CONSULTANTS
1815 S. EISENHOWER
WICHITA, KS 67209
(316) 262 0717
CONTACT: GEORGE A. EL TANNOURY, P.E.

CITY OF WICHITA TRAFFIC ENGINEER

CONTACT: PAUL GUNZELMAN, P.E.
455 N. MAIN ST. 7TH FLOOR
WICHITA, KS 67202
316-268-4393

UTILITY PROVIDERS

WESTAR ENERGY
(316) 261-6734
CONTACT: MRS. MARSHA JESSE

KANSAS GAS SERVICE

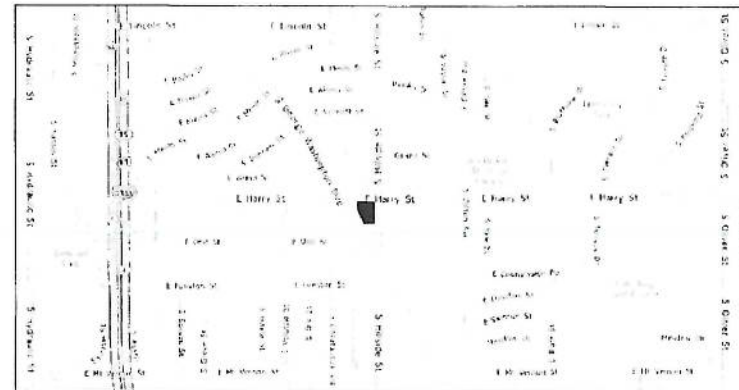
(316) 832-3126
CONTACT: MR. JIM COE
AT&T
(314) 957-3789
CONTACT: MR. MARK ADAMS

PUBLIC WORKS & UTILITIES

STORMWATER MANAGEMENT DIVISION
CITY HALL, 8TH FLOOR
455 N. MAIN
WICHITA, KANSAS 67202
(316) 268-4498
CONTACT: SCOTT LINDEBAK

CITY OF WICHITA WATER UTILITIES

CITY HALL, 8TH FLOOR
455 N. MAIN
WICHITA, KANSAS 67202
(316) 268-4555
CONTACT: GREG LOLLEY



VICINITY MAP
NOT TO SCALE

SITE DISTURBED AREA=1.63 ACRES

EXIST. UTILITY SYMBOL LEGEND

- G - GAS MAIN
- W - WATER MAIN
- SS - SANITARY SEWER
- BWS - STORM WATER SEWER
- USE - UNDER GROUND ELECTRIC
- UCT - UNDER GROUND TELEPHONE
- B.M. - BENCHMARK
- TELE. PED. - TELEPHONE PEDESTAL
- CATV - CABLE TELEVISION PEDESTAL
- E.B. - ELECTRIC BOX
- F.H. - FIRE HYDRANT
- GUY ANCHOR
- H.L.P. - HIGH LINE POLE
- I.C.V. - IRRIGATION CONTROL VALVE
- L.P. - LIGHT POLE
- P.P. - POWER POLE
- SIGN
- T.S. - TRAFFIC SIGNAL
- T.S.C.B. - TRAFFIC SIGNAL CONTROL BOX
- W.M. - WATER METER
- W.V. - WATER VALVE
- E.T. - ELECTRIC TRANSFORMER
- K.E.M.H. - KANSAS GAS ELECTRIC MANHOLE
- S.S.M.H. - SANITARY SEWER MANHOLE
- S.W.S.M.H. - STORM WATER SEWER MANHOLE
- S.H.E.X. - BORE HOLE

SITE BENCH MARKS:

Benchmark #1
City of Wichita Brass Disc on Traffic Signal Base 32.8' West of the Centerline of Hillside Ave. and 57.3' South of the Centerline of Harry St.
Elevation = 1315.19 NAVD88

Benchmark #2
Square Cut top of Curb 6.0' East of the Southeast Corner of Property.
(N. Side Flume)
Elevation = 1308.05 NAVD88

Benchmark #3
Square Cut top of Retain Wall 72.5' West of the Northwest Corner of Property.
Elevation = 1304.77 NAVD88

SITE COVERAGE CALCULATIONS

Floor To Area Ratio
13,225/63,597=0.19 FAR

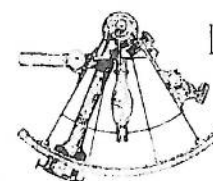
Existing Green Space
0.05 Acres = 3.4%

Proposed Impervious Area Parking Lot and Building
0.76 Acres of Parking Area and 0.31 Acres of Building

Proposed Pervious Space
0.01 Acres Pervious Space
0.20 Acres Pervious Pavement

Proposed percent of Impervious Area Coverage=80%

ELECTRONIC DRAWING NOTE:
ELECTRONIC MEDIA OR DIGITAL DRAWINGS ARE INSTRUMENT OF PROFESSIONAL SERVICES. OWNERSHIP OF SUCH WILL BE RETAINED BY THE CIVIL ENGINEER AND MAY NOT BE RELEASED TO CONTRACTORS. CONTRACTORS ARE ADVISED TO CREATE BIDS BASED ON THE USE OF PAPER COPIES OF THE PLANS



PREPARED BY:

PREMIER CIVIL
ENGINEERING



308 TCW Court
Lake Saint Louis, MO 63307
Phone: (314) 925-7444 Fax: (314) 925-7457

ALWAYS CALL
BEFORE YOU DIG
CALL 811



DATE: 8/17/2012
PCE PROJECT NUMBER: 112701

SHEET INDEX

C-3D SANITARY SEWER COVER SHEET
C-3E SANITARY SEWER PLAN SHEET

AS BUILTS

Contractor:
Danco Enterprises

01/16/2014

Project Inspector:
Tom Jones



2143 PPS

APPROVED AS NOTED
BY CITY ENGINEER OF WICHITA
Stormwater
Julianne Kallman
NOTE TO CONTRACTORS 8-4-13

Inspection and testing for this project are to be provided by a Licensed Consulting Engineering Firm under contract with the Owner/Developer. Said inspection to be in accordance with the City of Wichita standard construction engineering practices and certified by a Licensed Professional Engineer. No work shall be performed in dedicated easements or public right-of-way by the Contractor without such inspection, nor shall any work be commenced without written authorization by the City Engineer.

SHEET NUMBER: C-3E TITLE: PPS SANITARY SEWER COVER SHEET

REVISIONS:

NO.	DESCRIPTION:	INITIALS:	DATE:

NOTE
Underground utilities and structures have been plotted from available information and therefore, their location must be considered approximate only. It is the responsibility of the individual contractors to notify the utility companies before actual construction.

I:\STORAGE\Server\Civil\3D PROJECTS\112701\DWG\Construction Drawings\SWC HILLSIDE AND HARRY DES 07-19-12.DWG.dwg

CVS
pharmacy

NORTHERN 13,225-RIGHT
CHAMFER DRIVE-THRU

STORE NUMBER: 10070

SWC E HARRY ST AND S HILLSIDE ST
WICHITA, KS

PROJECT TYPE: NEW CONSTRUCTION

DEAL TYPE: Fee for Service/Land/Type B

CS PROJECT NUMBER: 064718

ARCHITECT OF RECORD

NORR
ARCHITECTS ENGINEERS PLANNERS

CONSULTANT:

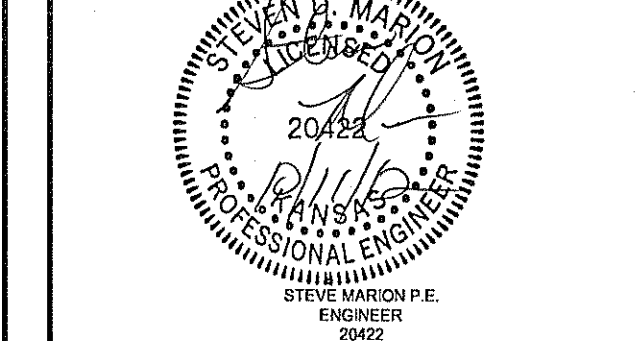
PREMIER CIVIL
ENGINEERING

308 TOW Court
Lake Saint Louis, MO 63367
Phone: (314) 925-7444 Fax: (314) 925-7457

DEVELOPER:

VELMEIR
COMPANIES

ENGINEER'S AUTHENTICATION
The responsibility for professional engineering liability on this project is hereby
limited to the set of plans authorized by the seal, signature, and date hereunder
attached. Responsibility is disclaimed for all other engineering plans involved in
this project and specifically designed for other engineering plans unless
reauthorized.



REVISIONS:

09-21-12 REVISED PER CITY COMMENTS

DRAWING BY: J. BRADDOCK

DATE: 10-04-12

JOB NUMBER: 112701

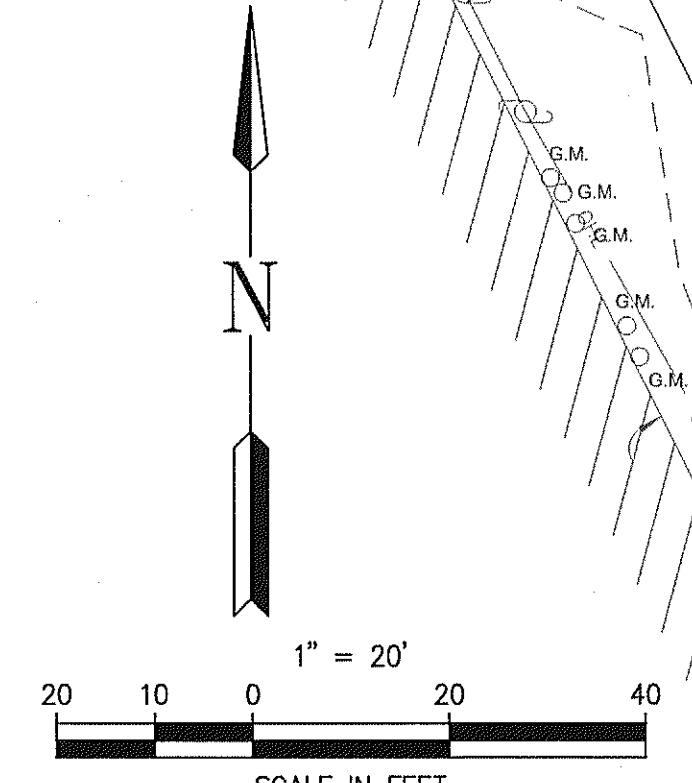
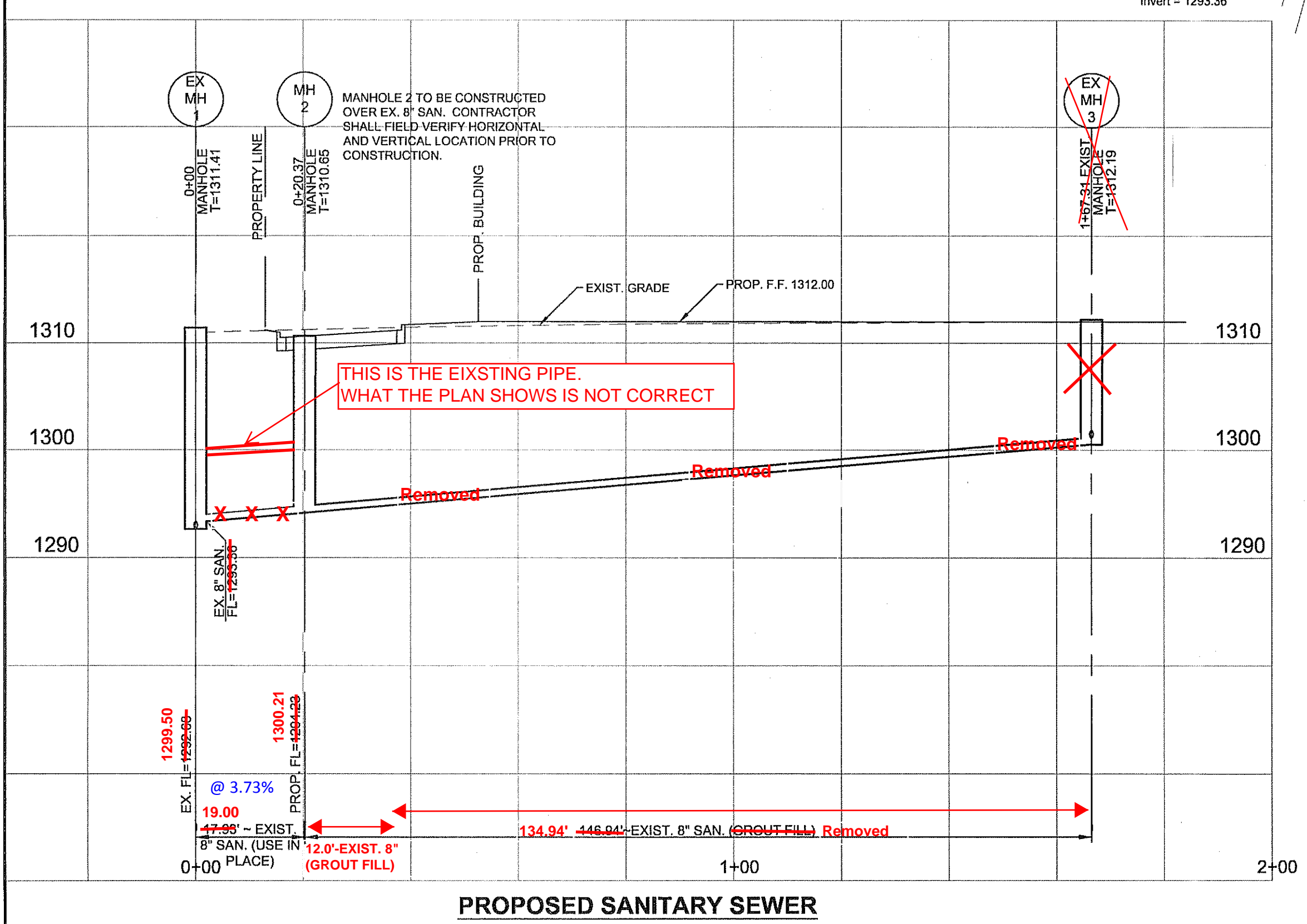
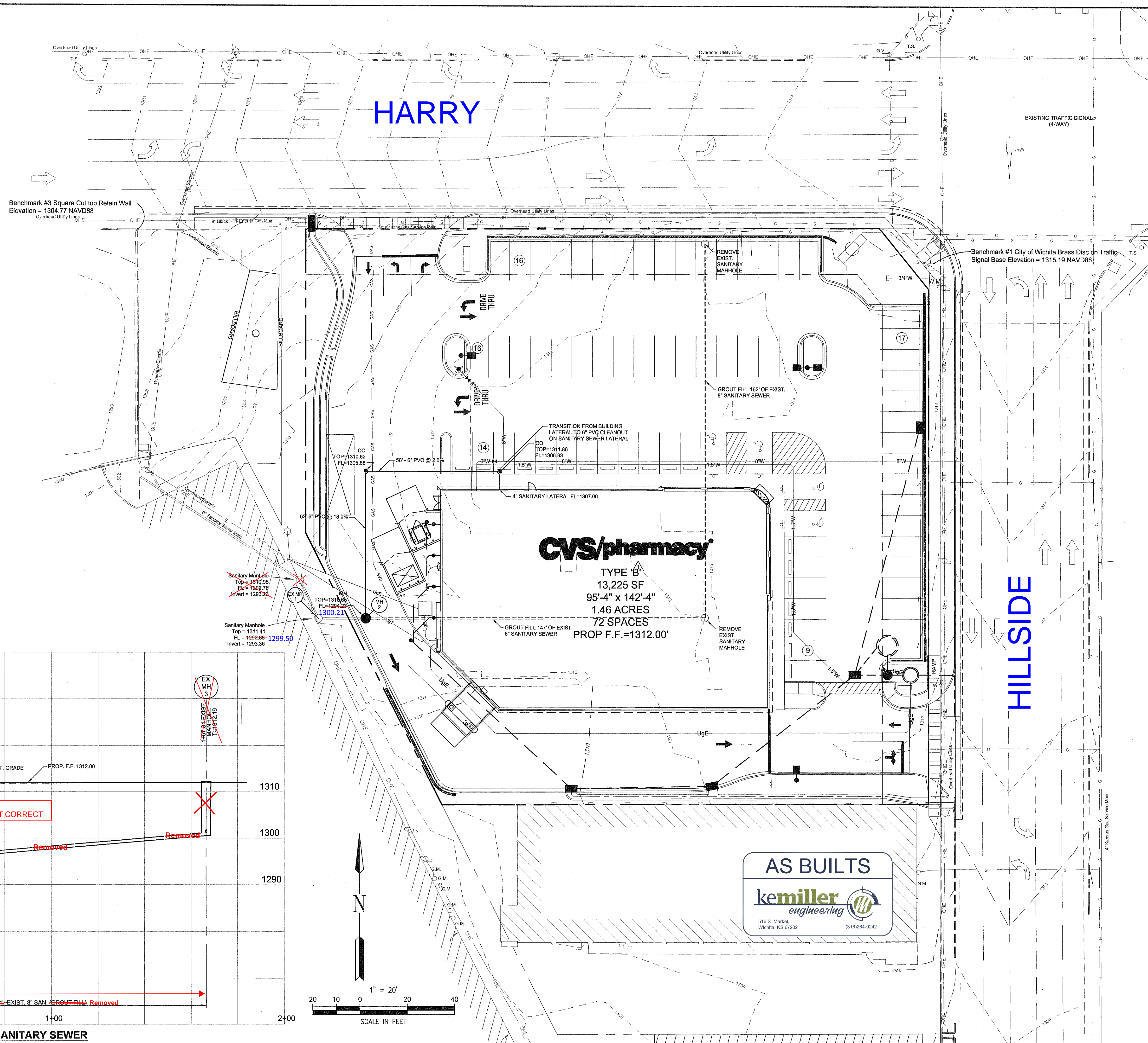
TITLE:

PPS SANITARY SEWER PLAN

SHEET NUMBER:

C-3F

COMMENTS:
NOT APPROVED FOR CONSTRUCTION



PROPOSED SANITARY SEWER

I:\STORAGE\1\Server\CIVIL_3D PROJECTS\112701\DWG\Construction Drawings\SWC HILLSIDE AND HARRY DES 07-19-12.DWG.dwg, 10/11/2012 12:01:10 PM, pc2012