

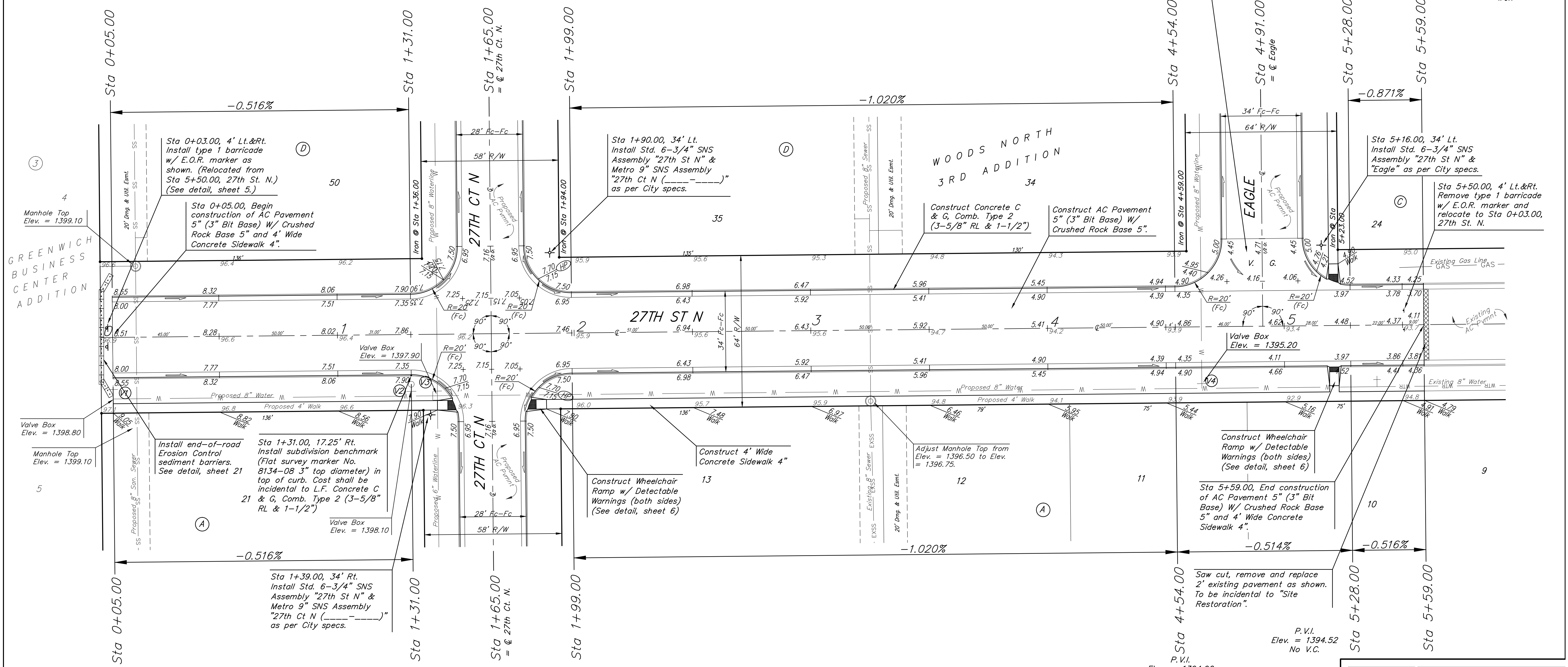
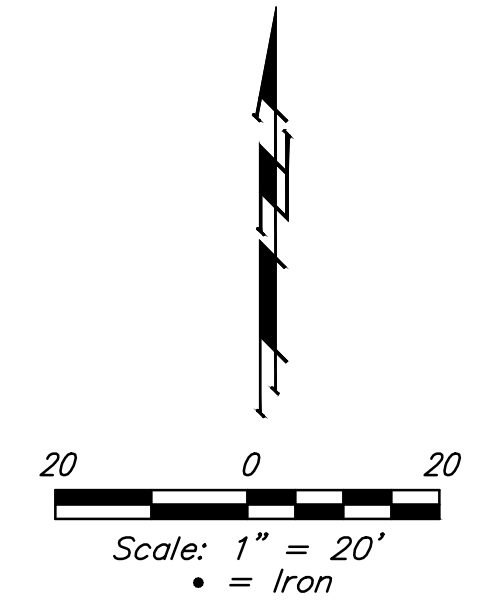
BENCHMARKS:
 BM #1: "□" cut in top of curb near intersection of 27th Street North & Woodridge, south of SE corner of Lot 24, Block C, Woods North 3rd Addition.
 Elev. = 1392.97 NGVD29

BM #2: "□" cut in top of curb near intersection of Woodridge Court & Woodridge, south of SE corner of Lot 6, Block A, Woods North 3rd Addition.
 Elev. = 1390.10 NGVD29

WATER VALVE LOCATION TABLE

VALVE NUMBER	STREET	BASELINE STATION	OFFSET DISTANCE	OFFSET DIRECTION
V1	27th St. N.	0+50.00	26'	Rt.
V2	27th St. N.	1+31.00	24'	Rt.
V3	27th St. N.	1+42.00	24'	Rt.
V4	27th St. N.	4+65.00	24'	Rt.

Paving contractor will be responsible to operate all water valves on the project, in the presence of the inspector, to ensure accessibility to the valves, and that all valves (except blowoffs) are left in the "ON" position when the project is completed.



Subdivision Bench Marks

Street & Station	Location Description	Elevation
27th St. N. 1+31.00, 17.25' Rt.	Adjacent to Fire Hydrant at Q. End of W. Curb Return of 27th St. N. & 27th Ct. N.	

NOTE: ROLL TYPE CURB & GUTTER (TYPE 2) TO BE CONSTRUCTED ON THE PAVEMENT SHOWN ON THIS SHEET. TOP OF CURB ELEVATIONS ARE GIVEN FOR FULL HEIGHT CURB (TYPE 4).



Baughman Woods North Addition - Phase II
27TH ST. N.
 STA 0+05.00 TO STA 5+59.00

Baughman Company, P.A. 315 Ellis St., Wichita, KS 67211 P 316-262-2771 F 316-262-0149
 ENGINEERING | SURVEYING | PLANNING | LANDSCAPE ARCHITECTURE

PROJECT NUMBER	DESIGN AEG	DRAWN TMS
REVISIONS:	APPROVED	DATE 9/13/13
	SCALE Noted	SHEET

7 OF 31

E:\Projects\Woods North Add. 11-12-13\Engineering\Phase 2\Str. 1348E945\StrWS_1348E945 Plans.dwg