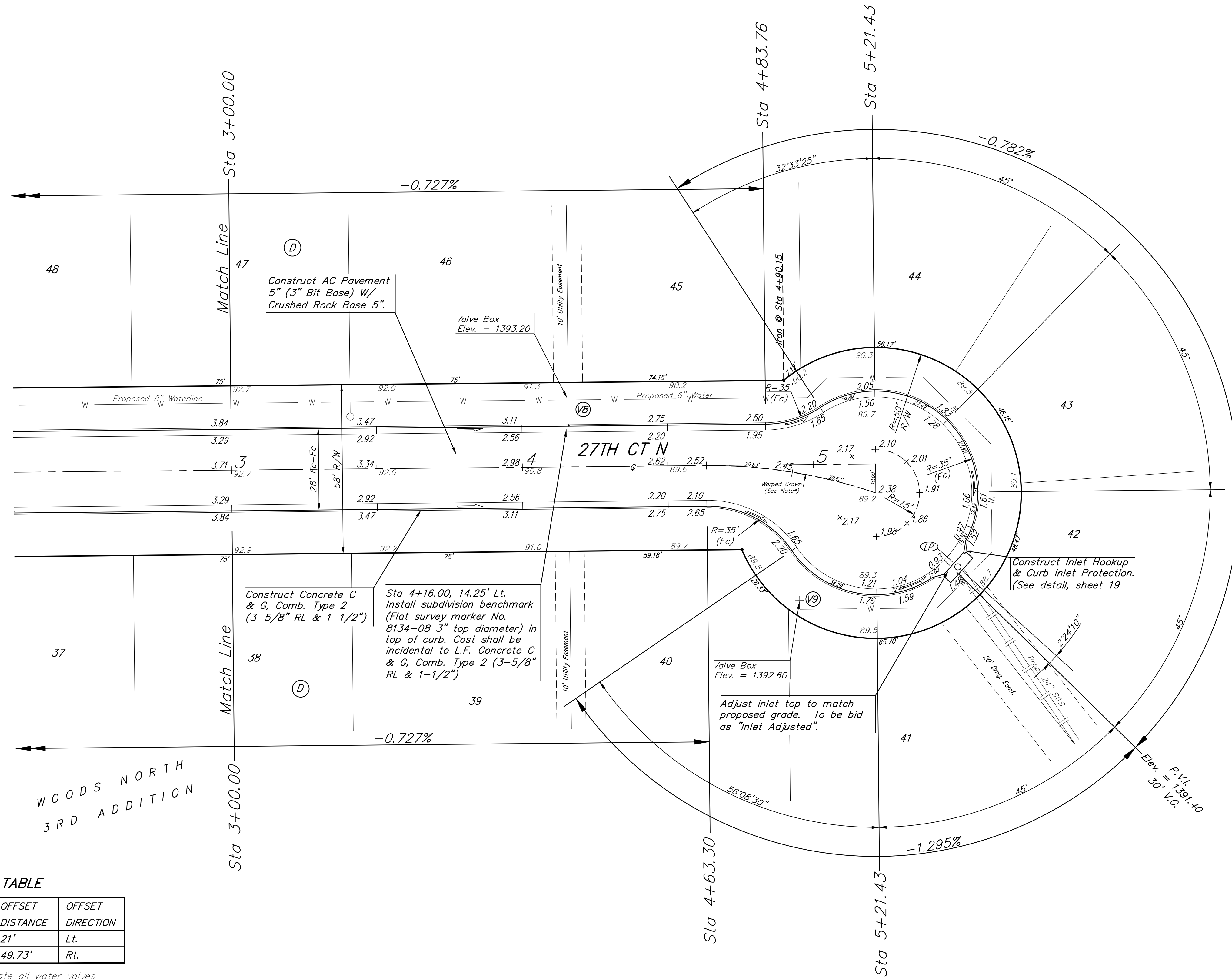
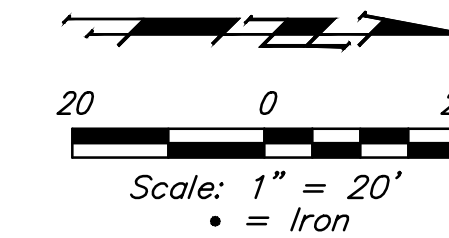


BENCHMARKS:

BM #1: "□" cut in top of curb near intersection of 27th Street North & Woodridge, south of SE corner of Lot 24, Block C, Woods North 3rd Addition.
Elev. = 1392.97 NGVD29

BM #2: "□" cut in top of curb near intersection of Woodridge Court & Woodridge, south of SE corner of Lot 6, Block A, Woods North 3rd Addition.
Elev. = 1390.10 NGVD29



*Note:
Warp crown to conform to approximate center of pavement.

WATER VALVE LOCATION TABLE

VALVE NUMBER	STREET	BASELINE STATION	OFFSET DISTANCE	OFFSET DIRECTION
V8	27th Ct. N.	4+16.00	21'	Lt.
V9	27th Ct. N.	4+94.89	49.73'	Rt.

Paving contractor will be responsible to operate all water valves on the project, in the presence of the inspector, to ensure accessibility to the valves, and that all valves (except blowoffs) are left in the "ON" position when the project is completed.

Subdivision Bench Marks

Street & Station	Location Description	Elevation
27th Ct. N. 4+16.00, 14.25' Lt.	Adjacent to Fire Hydrant near common front lot corner of Lots 45-46, Block D, Woods North 3rd Addition.	

NOTE: ROLL TYPE CURB & GUTTER (TYPE 2) TO BE CONSTRUCTED ON THE PAVEMENT SHOWN ON THIS SHEET. TOP OF CURB ELEVATIONS ARE GIVEN FOR FULL HEIGHT CURB (TYPE 4).



	Woods North Addition - Phase II	
	27TH CT. N. STA 0+00 TO STA 5+21.43	
Baughman Company, P.A. 315 Ellis St., Wichita, KS 67211 P 316-262-7271 F 316-262-0149 ENGINEERING SURVEYING PLANNING LANDSCAPE ARCHITECTURE		
PROJECT NUMBER	DESIGN AEG	DRAWN TMS
REVISIONS:	APPROVED	DATE 9/13/13
	SCALE Noted	SHEET
	11 OF 31	