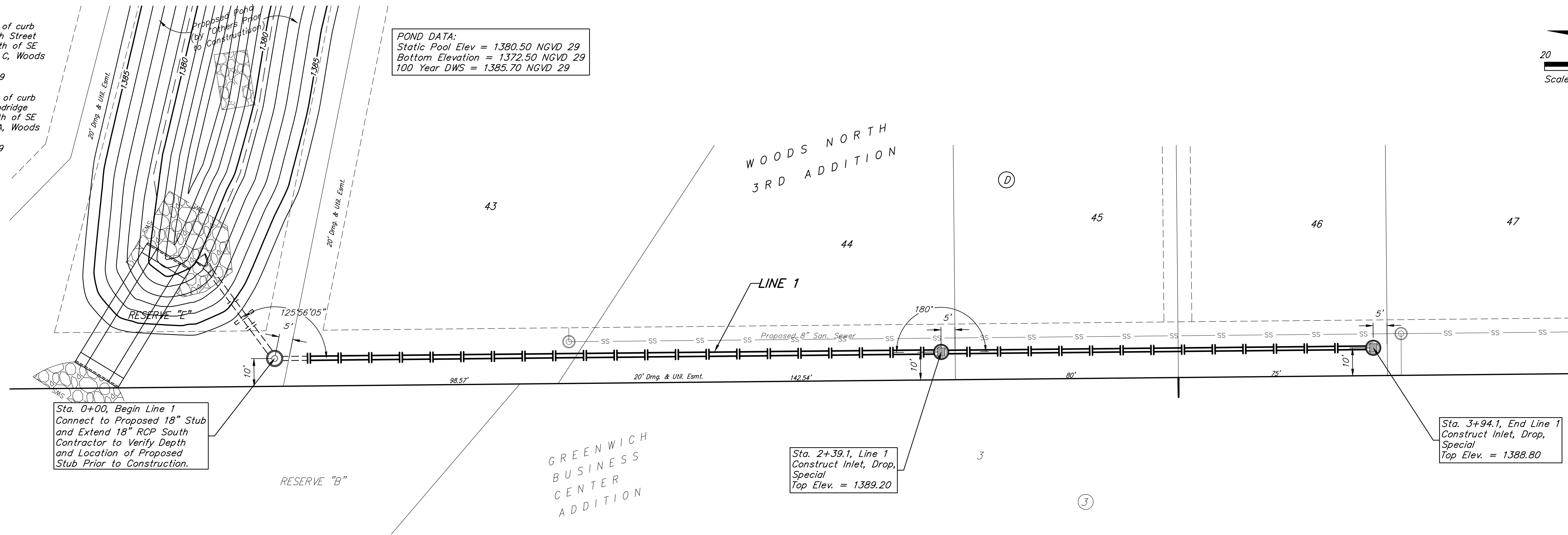
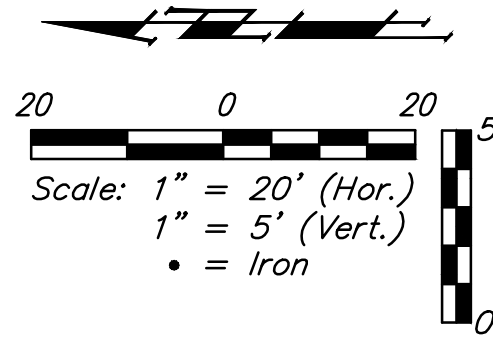


BENCHMARKS:

BM #1: "□" cut in top of curb near intersection of 27th Street North & Woodridge, south of SE corner of Lot 24, Block C, Woods North 3rd Addition.
Elev. = 1392.97 NGVD29

BM #2: "□" cut in top of curb near intersection of Woodridge Court & Woodridge, south of SE corner of Lot 6, Block A, Woods North 3rd Addition.
Elev. = 1390.10 NGVD29

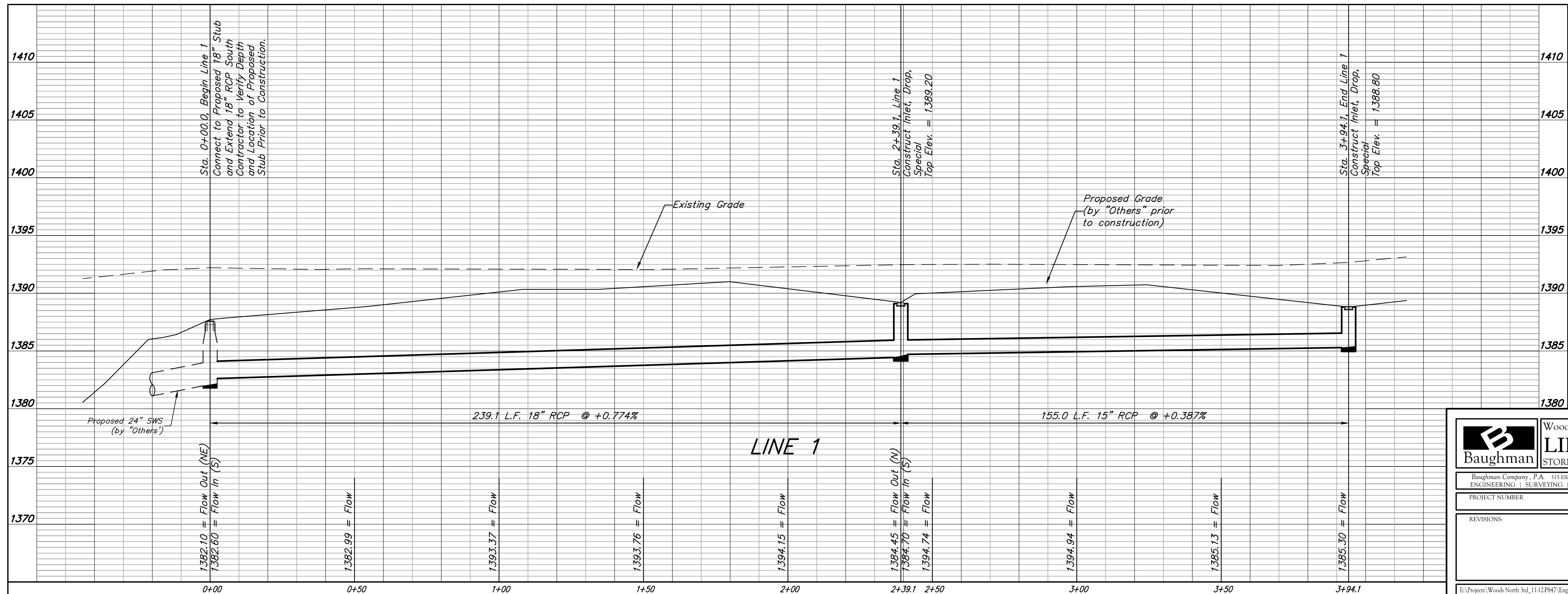
POND DATA:
Static Pool Elev = 1380.50 NGVD 29
Bottom Elevation = 1372.50 NGVD 29
100 Year DWS = 1385.70 NGVD 29



Sta. 0+00, Begin Line 1
Connect to Proposed 18" Stub and Extend 18" RCP South Contractor to Verify Depth and Location of Proposed Stub Prior to Construction.

Sta. 2+39.1, Line 1
Construct Inlet, Drop, Special
Top Elev. = 1389.20

Sta. 3+94.1, End Line 1
Construct Inlet, Drop, Special
Top Elev. = 1388.80



		Woods North Addition - Phase II	
		LINE 1 STORMWATER SEWER IMPROVEMENTS	
Baughman Company, P.A. 315 Ellis St., Wichita, KS 67211 P 316-262-7271 F 316-262-0149 ENGINEERING SURVEYING PLANNING LANDSCAPE ARCHITECTURE			
PROJECT NUMBER	DESIGN	DRAWN	
	AEG	TMS	
REVISIONS:	APPROVED	DATE	
		9/13/13	
	SCALE	SHEET	
	Noted	12 OF 31	