

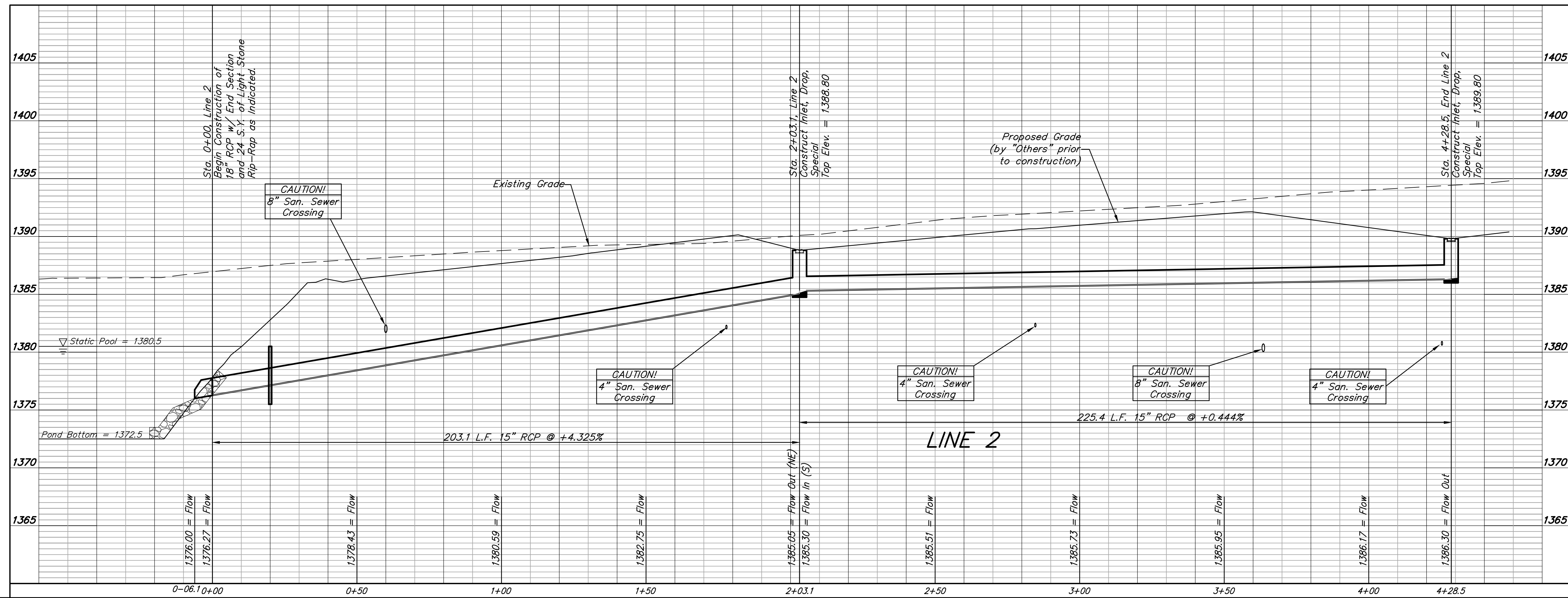
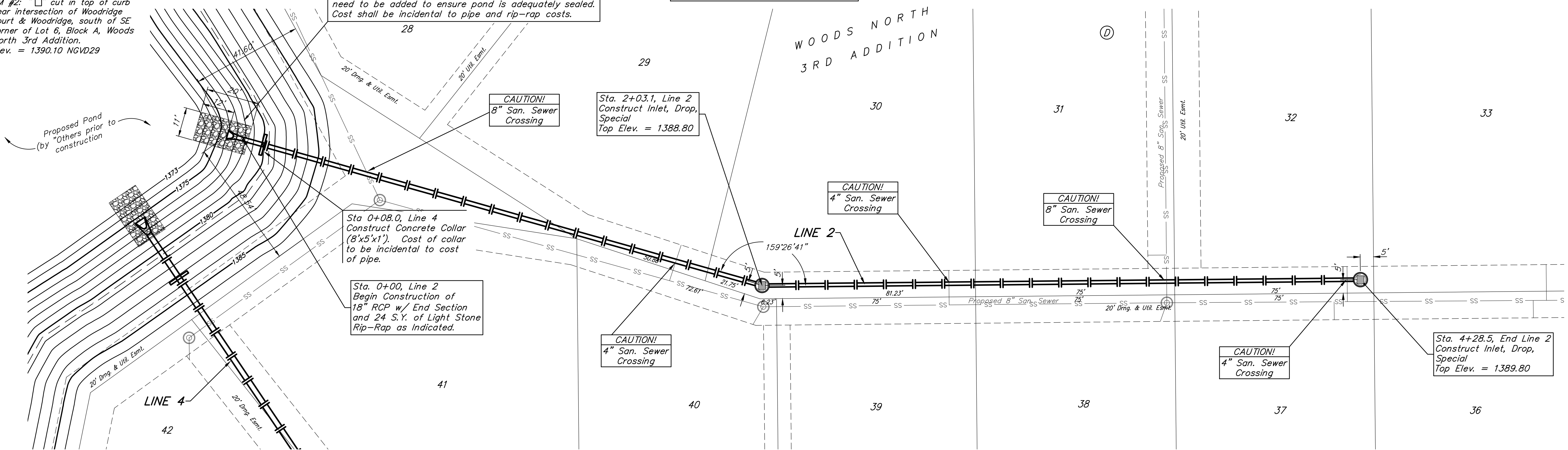
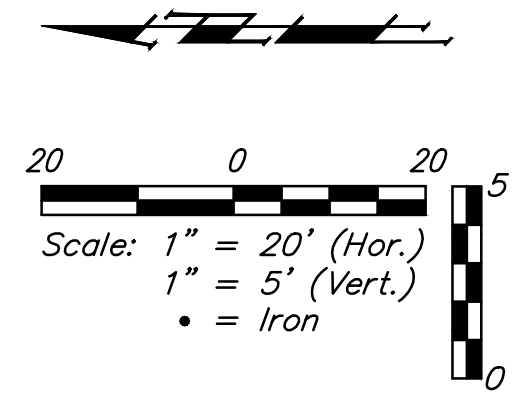
BENCHMARKS:

BM #1: "□" cut in top of curb near intersection of 27th Street North & Woodridge, south of SE corner of Lot 24, Block C, Woods North 3rd Addition.
Elev. = 1392.97 NGVD29

BM #2: "□" cut in top of curb near intersection of Woodridge Court & Woodridge, south of SE corner of Lot 6, Block A, Woods North 3rd Addition.
Elev. = 1390.10 NGVD29

Existing Pond Slope slopes are clay lined have been treated with 6" thick 4% bentonite application. Contractor shall excavate clay liner material and replace around end section and under rip-rap to provide continuous treated clay liner. Additional bentonite may need to be added to ensure pond is adequately sealed. Cost shall be incidental to pipe and rip-rap costs.

POND DATA:
Static Pool Elev. = 1380.50 NGVD 29
Bottom Elevation = 1372.50 NGVD 29
100 Year DWS = 1385.70 NGVD 29



		Woods North Addition - Phase II	
		LINE 2	
STORMWATER SEWER IMPROVEMENTS		Baughman Company, P.A. 315 Ellis St., Wichita, KS 67211 P 316-262-7271 F 316-262-0149 ENGINEERING SURVEYING PLANNING LANDSCAPE ARCHITECTURE	
PROJECT NUMBER	DESIGN	AEG	DRAWN
	APPROVED	TMS	DATE
REVISIONS:		Noted	9/13/13
	SCALE		
	SHEET	13 OF 31	