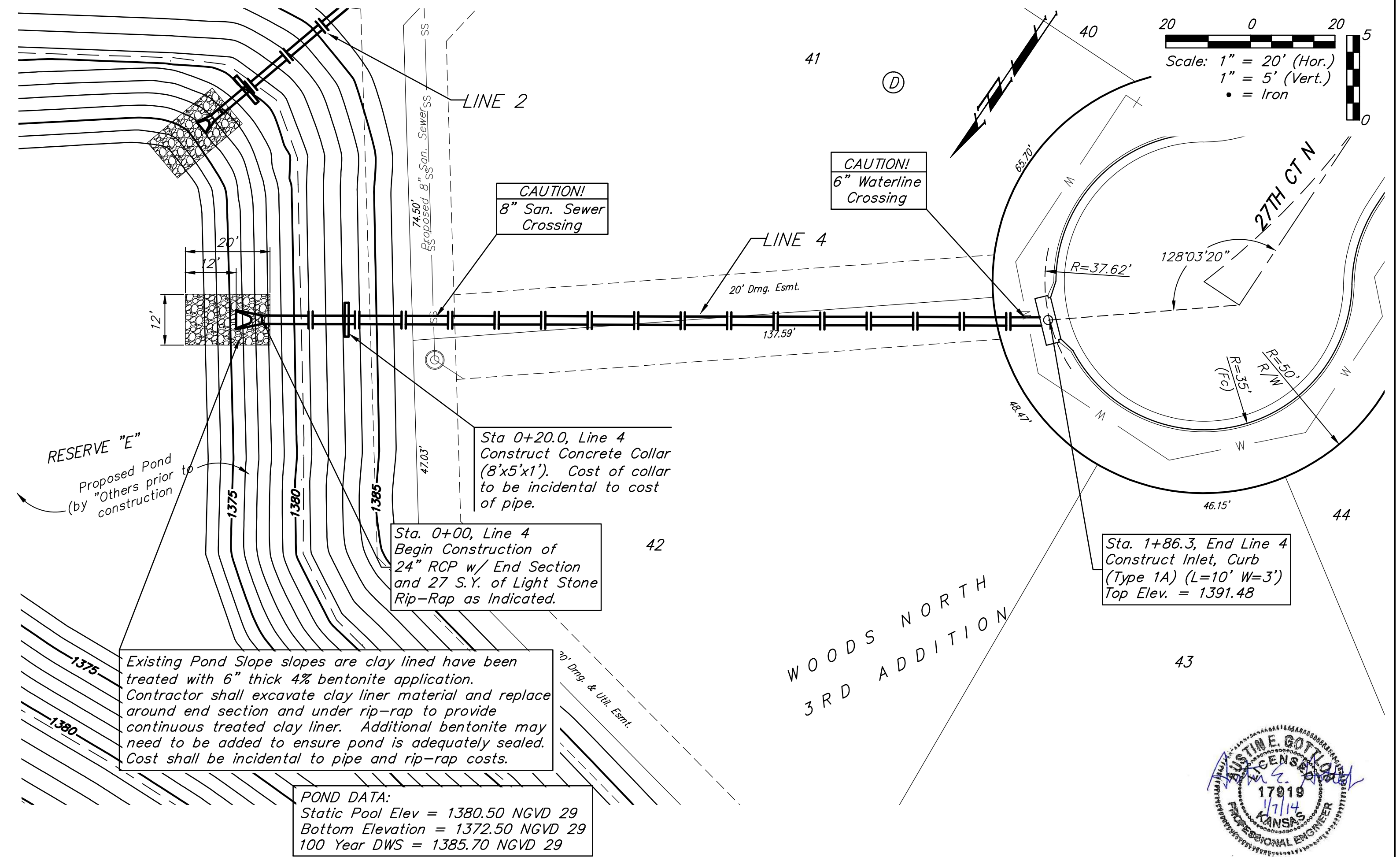
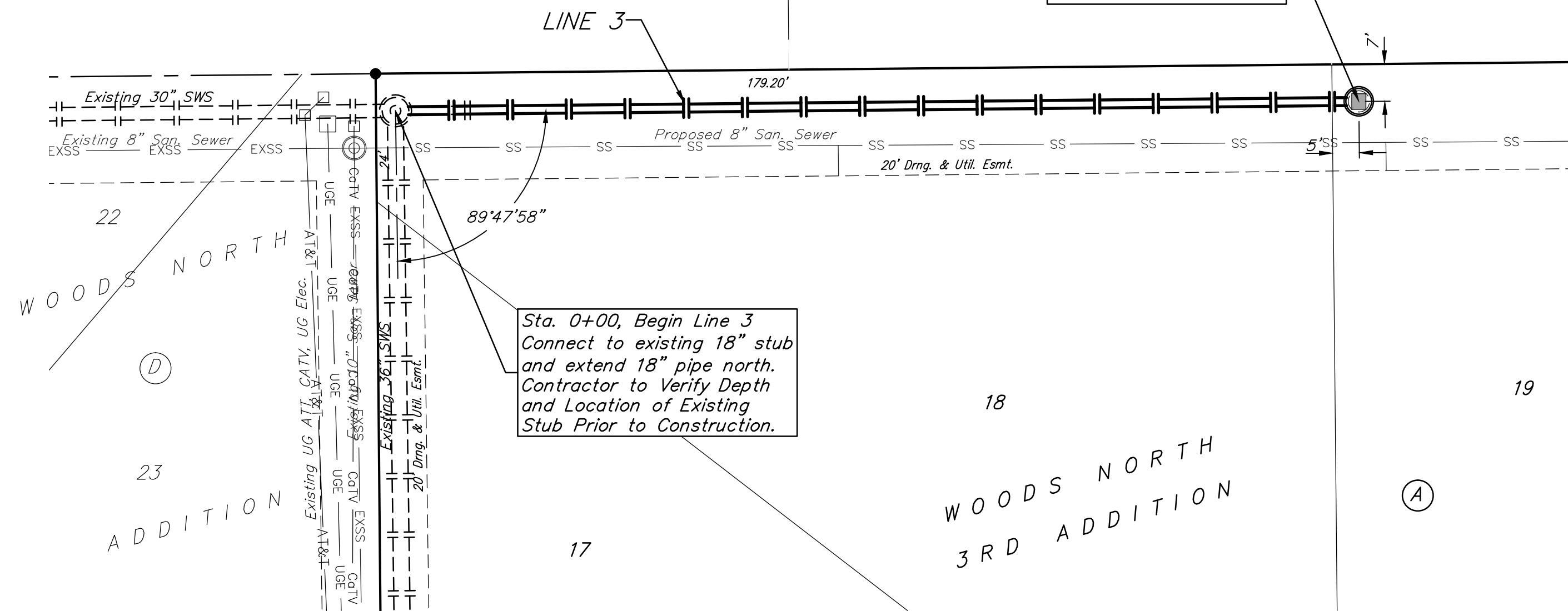
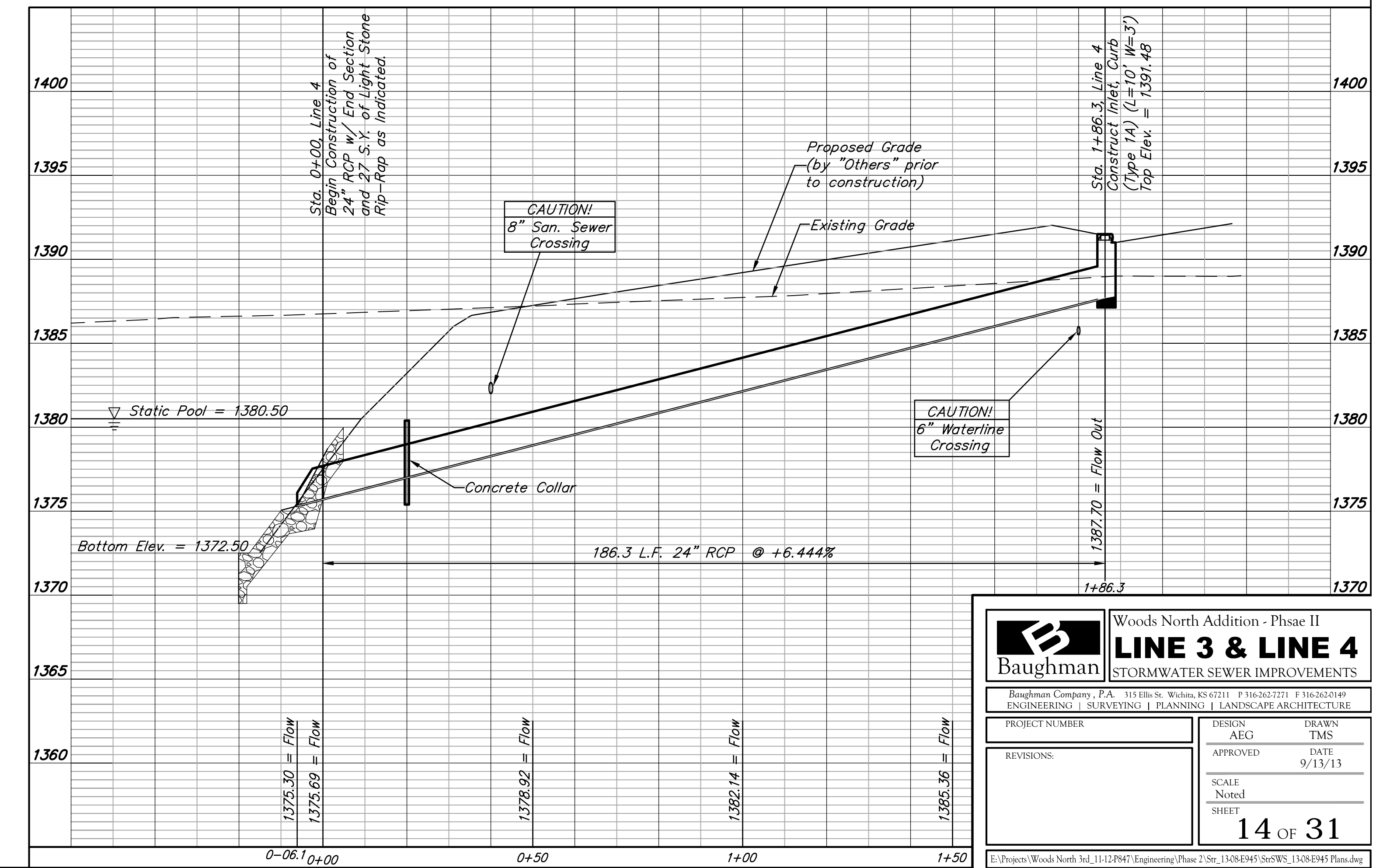
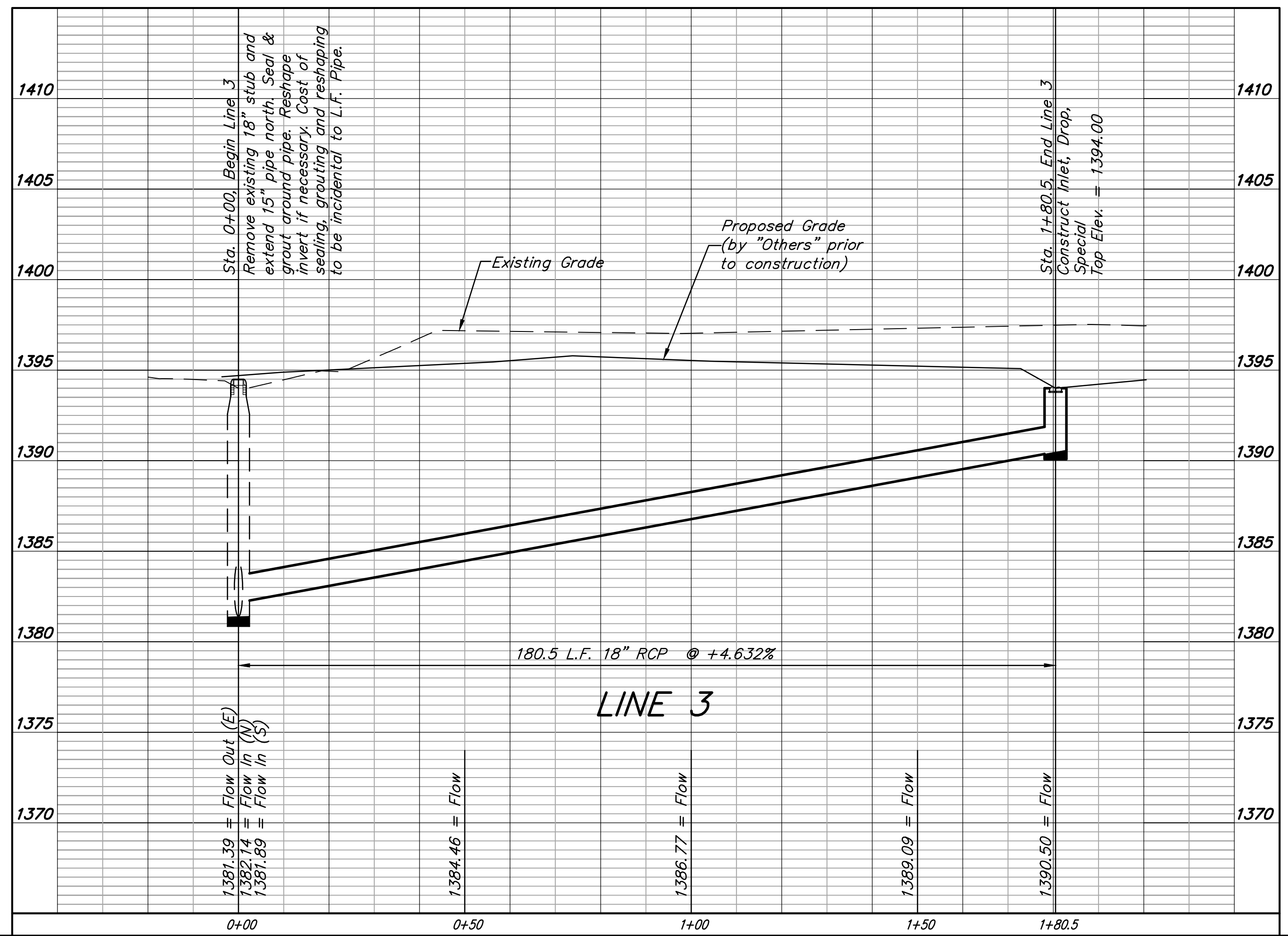
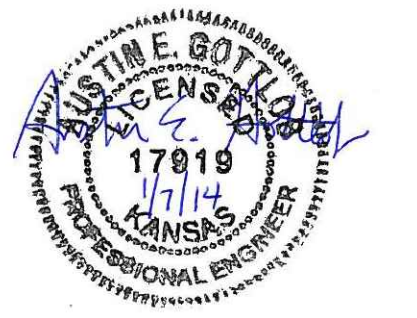


**BENCHMARKS:**  
 BM #1: "□" cut in top of curb near intersection of 27th Street North & Woodridge, south of SE corner of Lot 24, Block C, Woods North 3rd Addition.  
 Elev. = 1392.97 NGVD29

BM #2: "□" cut in top of curb near intersection of Woodridge Court & Woodridge, south of SE corner of Lot 6, Block A, Woods North 3rd Addition.  
 Elev. = 1390.10 NGVD29



**POND DATA:**  
 Static Pool Elev = 1380.50 NGVD 29  
 Bottom Elevation = 1372.50 NGVD 29  
 100 Year DWS = 1385.70 NGVD 29



		<b>Woods North Addition - Phase II</b> <b>LINE 3 &amp; LINE 4</b> <b>STORMWATER SEWER IMPROVEMENTS</b>	
		<small>Baughman Company, P.A. 315 Ellis St., Wichita, KS 67211 P 316-262-2771 F 316-262-0149        ENGINEERING   SURVEYING   PLANNING   LANDSCAPE ARCHITECTURE</small>	
PROJECT NUMBER REVISIONS:	DESIGN AEG APPROVED DATE 9/13/13	DRAWN TMS SCALE Noted SHEET	<b>14 OF 31</b>