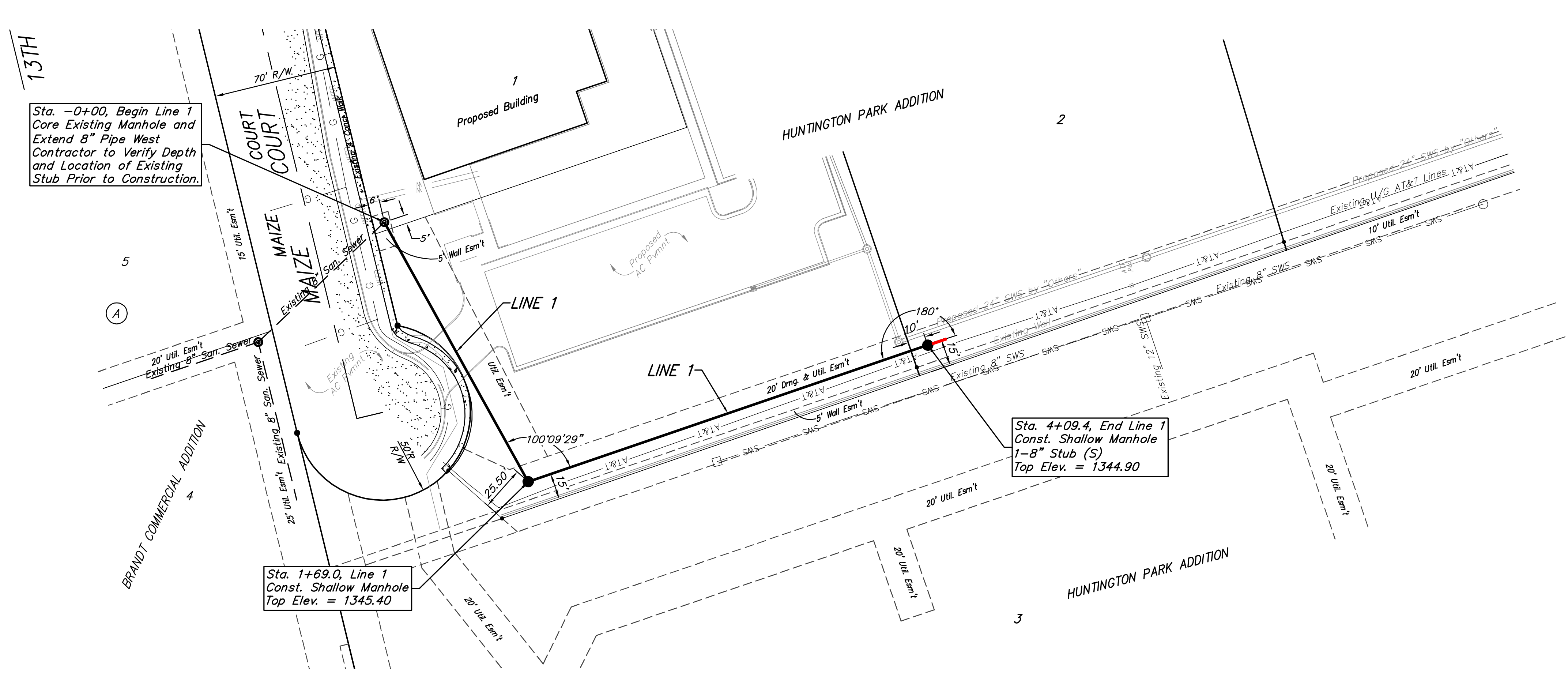


BENCHMARKS

BM #1:
 "□" Chiseled on Top of Curb.
 Elevation=1342.67 (NAVD 88)

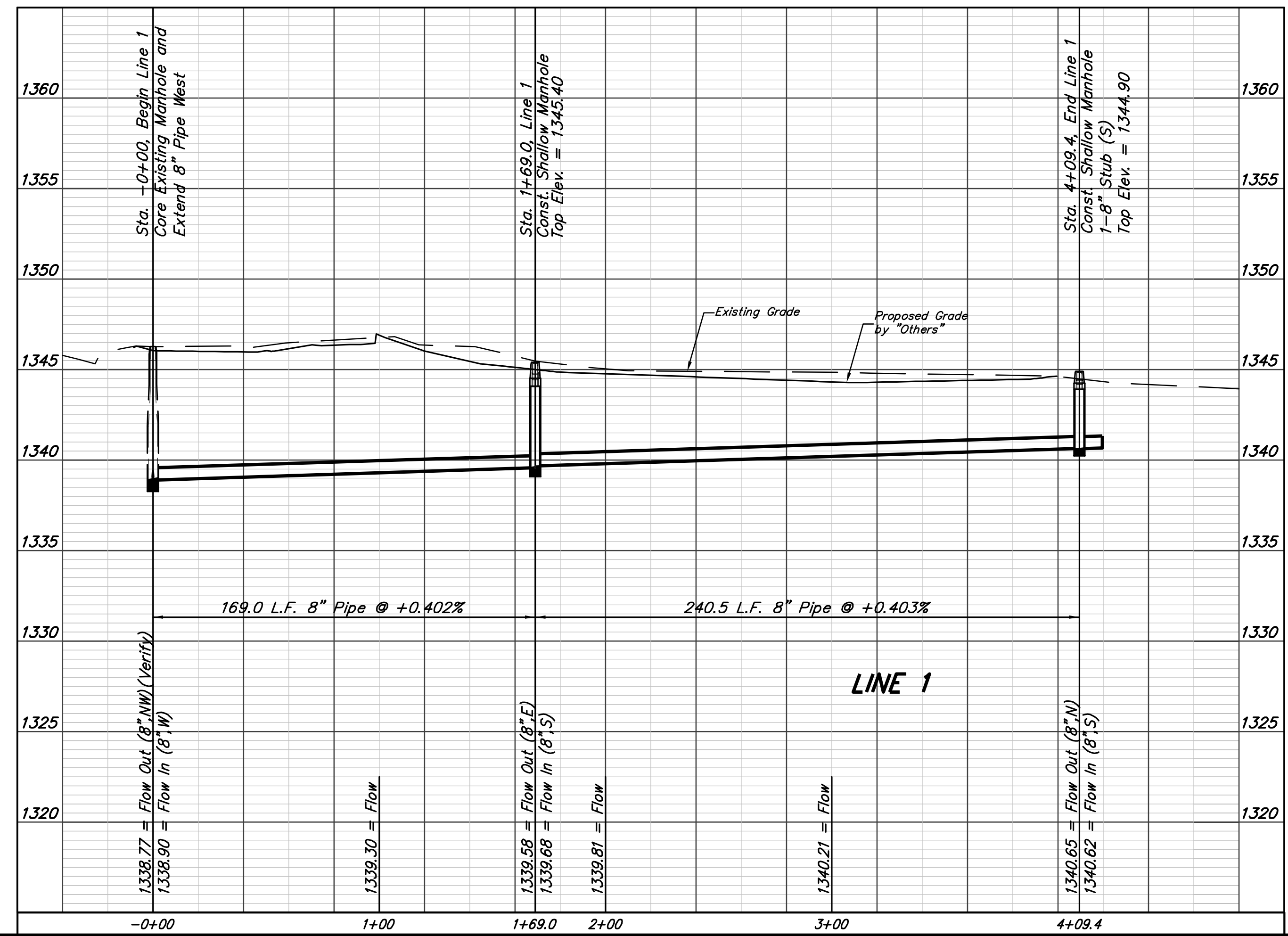
BM #2:
 "□" Chiseled on Top of Catch Basin.
 Elevation=1344.16 (NAVD 88)



Sta. -0+00, Begin Line 1 Core Existing Manhole and Extend 8" Pipe West Contractor to Verify Depth and Location of Existing Stub Prior to Construction.

Sta. 1+69.0, Line 1 Const. Shallow Manhole Top Elev. = 1345.40

Sta. 4+09.4, End Line 1 Const. Shallow Manhole 1-8" Stub (S) Top Elev. = 1344.90



Baughman Company, P.A.
 468-84883 OCA 744349

Huntington Park Addition
LINE 1
 Sanitary Sewer Improvements

PROJECT NUMBER: 468-84883 OCA 744349
 DESIGN: PAT
 DRAWN: JAK
 APPROVED: psb
 DATE: 8/14/13
 SCALE: Noted
 SHEET: 2 OF 11