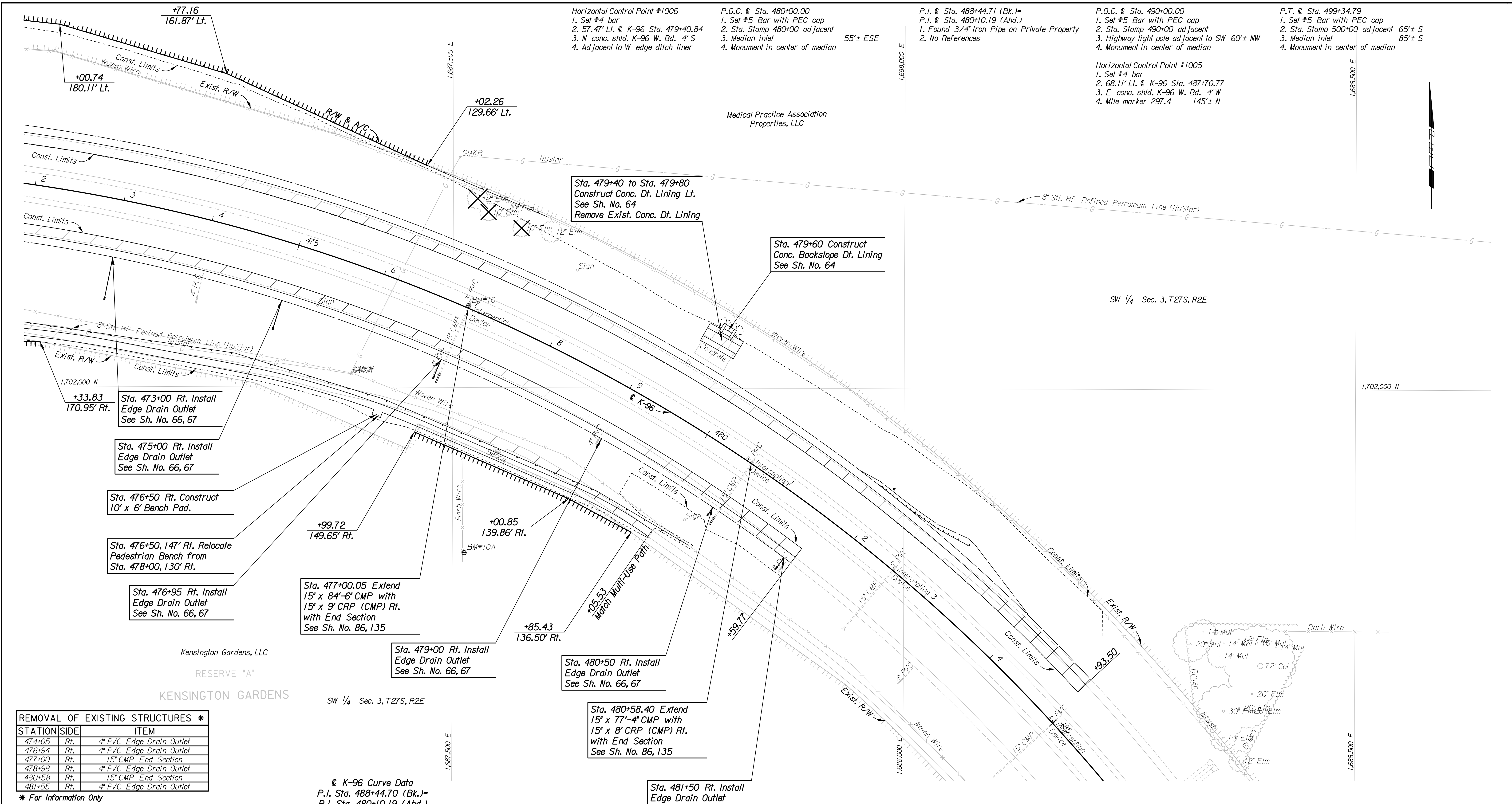


Plotted By: cp Date: 12/30/2013 11:33:53 AM
 File: I:\2009\0952\Plan\0952-1-14172.dgn



Horizontal Control Point #1006
 1. Set #4 bar
 2. 57.47' Lt. @ K-96 Sta. 479+40.84
 3. N conc. shld. K-96 W. Bd. 4' S
 4. Adjacent to W edge ditch liner

P.O.C. @ Sta. 480+00.00
 1. Set #5 Bar with PEC cap
 2. Sta. Stamp 480+00 adjacent
 3. Median inlet
 4. Monument in center of median

P.I. @ Sta. 488+44.71 (Bk.)=
 P.I. @ Sta. 480+10.19 (Ahd.)
 1. Found 3/4" Iron Pipe on Private Property
 2. No References

P.O.C. @ Sta. 490+00.00
 1. Set #5 Bar with PEC cap
 2. Sta. Stamp 490+00 adjacent
 3. Highway light pole adjacent to SW 60'± NW
 4. Monument in center of median

P.T. @ Sta. 499+34.79
 1. Set #5 Bar with PEC cap
 2. Sta. Stamp 500+00 adjacent 65'± S
 3. Median inlet 85'± S
 4. Monument in center of median

Sta. 479+40 to Sta. 479+80
 Construct Conc. Dt. Lining Lt.
 See Sh. No. 64
 Remove Exist. Conc. Dt. Lining

Sta. 479+60 Construct
 Conc. Backslope Dt. Lining
 See Sh. No. 64

Sta. 473+00 Rt. Install
 Edge Drain Outlet
 See Sh. No. 66, 67

Sta. 475+00 Rt. Install
 Edge Drain Outlet
 See Sh. No. 66, 67

Sta. 476+50 Rt. Construct
 10' x 6' Bench Pad.

Sta. 476+50, 147' Rt. Relocate
 Pedestrian Bench from
 Sta. 478+00, 130' Rt.

Sta. 476+95 Rt. Install
 Edge Drain Outlet
 See Sh. No. 66, 67

Sta. 477+00.05 Extend
 15' x 84'-6" CMP with
 15' x 9' CRP (CMP) Rt.
 with End Section
 See Sh. No. 86, 135

Sta. 479+00 Rt. Install
 Edge Drain Outlet
 See Sh. No. 66, 67

Sta. 480+50 Rt. Install
 Edge Drain Outlet
 See Sh. No. 66, 67

Sta. 480+58.40 Extend
 15' x 77'-4" CMP with
 15' x 8' CRP (CMP) Rt.
 with End Section
 See Sh. No. 86, 135

Sta. 481+50 Rt. Install
 Edge Drain Outlet
 See Sh. No. 66, 67

REMOVAL OF EXISTING STRUCTURES *		
STATION	SIDE	ITEM
474+05	Rt.	4" PVC Edge Drain Outlet
476+94	Rt.	4" PVC Edge Drain Outlet
477+00	Rt.	15" CMP End Section
478+98	Rt.	4" PVC Edge Drain Outlet
480+58	Rt.	15" CMP End Section
481+55	Rt.	4" PVC Edge Drain Outlet

* For Information Only

℄ K-96 Curve Data
 P.I. Sta. 488+44.70 (Bk.)=
 P.I. Sta. 480+10.19 (Ahd.)
 Δ=90° 26' 26" Rt.
 R=1,909.86'
 T=1,924.60'
 L=3,014.69'
 E=801.53'
 SE=8.0% (Exist.)

LEGEND
 [Hatched Box] - Pavement Removal
 [X] - Denotes trees to be removed.

Center Cor. Sec. 3, T27S, R2E
 Found 3/4" Iron Pipe
 1. Chiseled **W conc. base electric tower 87.50' ENE
 2. 60d nail top fence post 9.85' N
 3. 60d nail top fence post 21.75' WNW
 4. 60d nail E face 10' hedge tree 24.22' S

S 1/4 Cor. Sec 3, T27S, R2E
 Found #5 Bar with cap in thimble
 1. In ℄ Sidewalk 100'± E of K-96 Overpass
 2. Chiseled **top of curb NE 13.00'
 3. Chiseled **top of curb NW 12.80'
 4. Chiseled **top of curb SW 12.90'
 5. Chiseled **top of curb SE 13.22'

BM#11-Set Chis. **Ctr. S side Median Inlet
 3.1' Lt. K-96 Sta. 487+74.3 Elev.=1379.34

BM#9-Set Chis. **Ctr. W side Median Inlet
 2.6' Lt. K-96 Sta. 470+49.6 Elev.=1387.02

BM#10A-from Proj. 60X-88509/KDOT 96-87 K-4434-01 (BM#33)
 **U Post in N-S Fence ± 80' N of Fence PI N-S-E
 247.30' Rt. K-96 Sta. 478+18.8 Elev.=1377.46

BM#10-Set Chis. **Ctr. W side Median Inlet
 2.9' Lt. K-96 Sta. 476+99.5 Elev.=1379.04

No.	Revision	By	Date
K-96 AND GREENWICH ROAD			
STA. 472+00 TO STA. 485+00			
GARY JANZEN, P.E.-CITY ENGINEER CITY OF WICHITA PROJECT NO. 472-85066			
PEC PROFESSIONAL ENGINEERING CONSULTANTS, P.A. 303 SOUTH TOPEKA WICHITA, KS 67202 316-262-2691 www.pec1.com			
Designed by	JPS	Job No.	09521
Drawn by	SVB	Date	Jan., 2014
			Sht. 12 of 388