

UTILITIES

AT&T
Wichita Central Unit
154 N. Broadway, Rm. 210
Wichita, ks. 67202
Jason Edwards (316) 268-2008

Cox Communications
901 George Washington Blvd.
Wichita, ks. 67211
Marc Henderson (316) 260-7745

Kansas Gas Service
1021 E. 26th St. N.
Wichita, ks. 67219
Jim Coe (316) 832-3126

NuStar Pipeline Operating Partnership L.P.
7340 W. 21st St. N., Suite 200
Wichita, ks. 67205
Dale Smith (316) 773-9000

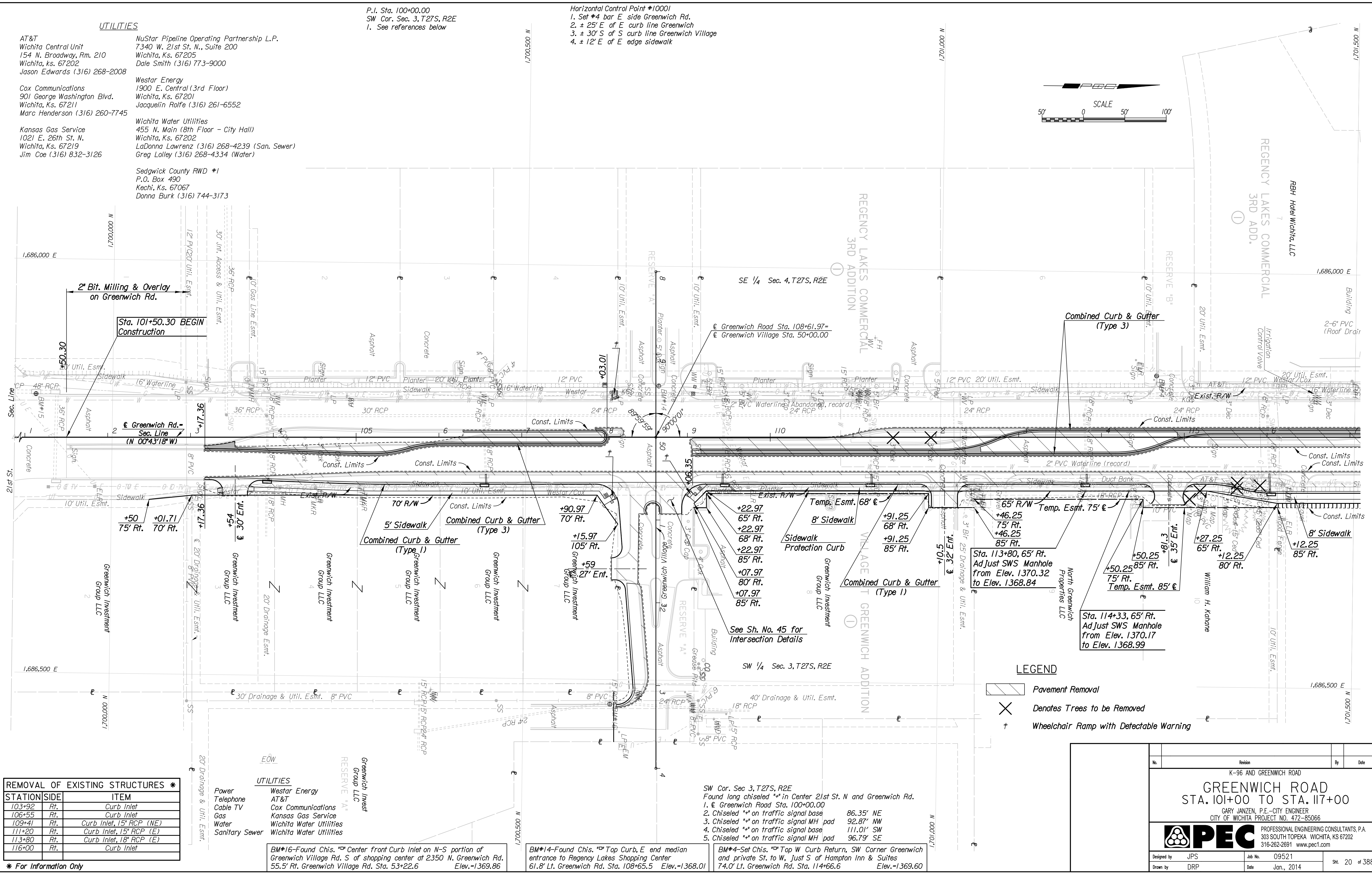
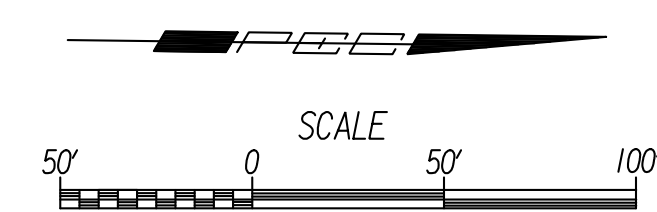
Westar Energy
1900 E. Central (3rd Floor)
Wichita, ks. 67201
Jacquelin Rolfe (316) 261-6552

Wichita Water Utilities
455 N. Main (8th Floor - City Hall)
Wichita, ks. 67202
LaDonna Lawrenz (316) 268-4239 (San. Sewer)
Greg Lolley (316) 268-4334 (Water)

Sedgwick County RWD #1
P.O. Box 490
Kechi, ks. 67067
Donna Burk (316) 744-3173

P.I. Sta. 100+00.00
SW Cor. Sec. 3, T27S, R2E
1. See references below

Horizontal Control Point #10001
1. Set #4 bar E side Greenwich Rd.
2. ± 25' E of E curb line Greenwich
3. ± 30' S of S curb line Greenwich Village
4. ± 12' E of E edge sidewalk



REMOVAL OF EXISTING STRUCTURES *

STATION	SIDE	ITEM
103+92	Rt.	Curb Inlet
106+55	Rt.	Curb Inlet
109+41	Rt.	Curb Inlet, 15" RCP (NE)
111+20	Rt.	Curb Inlet, 15" RCP (E)
113+80	Rt.	Curb Inlet, 18" RCP (E)
116+00	Rt.	Curb Inlet

* For Information Only

UTILITIES

Power
Telephone
Cable TV
Gas
Water
Sanitary Sewer

Westar Energy
AT&T
Cox Communications
Kansas Gas Service
Wichita Water Utilities
Wichita Water Utilities

BM#16-Found Chis. "D" Center front Curb Inlet on N-S portion of Greenwich Village Rd. S of shopping center at 2350 N. Greenwich Rd. 55.5' Rt. Greenwich Village Rd. Sta. 53+22.6 Elev.=1369.86

BM#14-Found Chis. "D" Top Curb, E end median entrance to Regency Lakes Shopping Center 61.8' Lt. Greenwich Rd. Sta. 108+65.5 Elev.=1368.01

SW Cor. Sec. 3, T27S, R2E
Found long chiseled "*" in Center 21st St. N and Greenwich Rd.
1. & Greenwich Road Sta. 100+00.00
2. Chiseled "*" on traffic signal base 86.35' NE
3. Chiseled "*" on traffic signal MH pad 92.87' NW
4. Chiseled "*" on traffic signal base 111.01' SW
5. Chiseled "*" on traffic signal MH pad 96.79' SE

BM#4-Set Chis. "D" Top W Curb Return, SW Corner Greenwich and private St. to W, Just S of Hampton Inn & Suites 74.0' Lt. Greenwich Rd. Sta. 114+66.6 Elev.=1369.60

- LEGEND**
- Pavement Removal
 - Denotes Trees to be Removed
 - Wheelchair Ramp with Detectable Warning

No.	Revision	By	Date
K-96 AND GREENWICH ROAD			
GREENWICH ROAD			
STA. 101+00 TO STA. 117+00			
GARY JANZEN, P.E.-CITY ENGINEER CITY OF WICHITA PROJECT NO. 472-85066			
PEC PROFESSIONAL ENGINEERING CONSULTANTS, P.A. 303 SOUTH TOPEKA WICHITA, KS 67202 316-262-2691 www.pec1.com			
Designed by	JPS	Job No.	09521
Drawn by	DRP	Date	Jan., 2014
			Sht. 20 of 388

Plotted By: cp
Date: 12/30/2013 11:54:01 AM
FILE: I:\2009\09521\plan\01.dgn