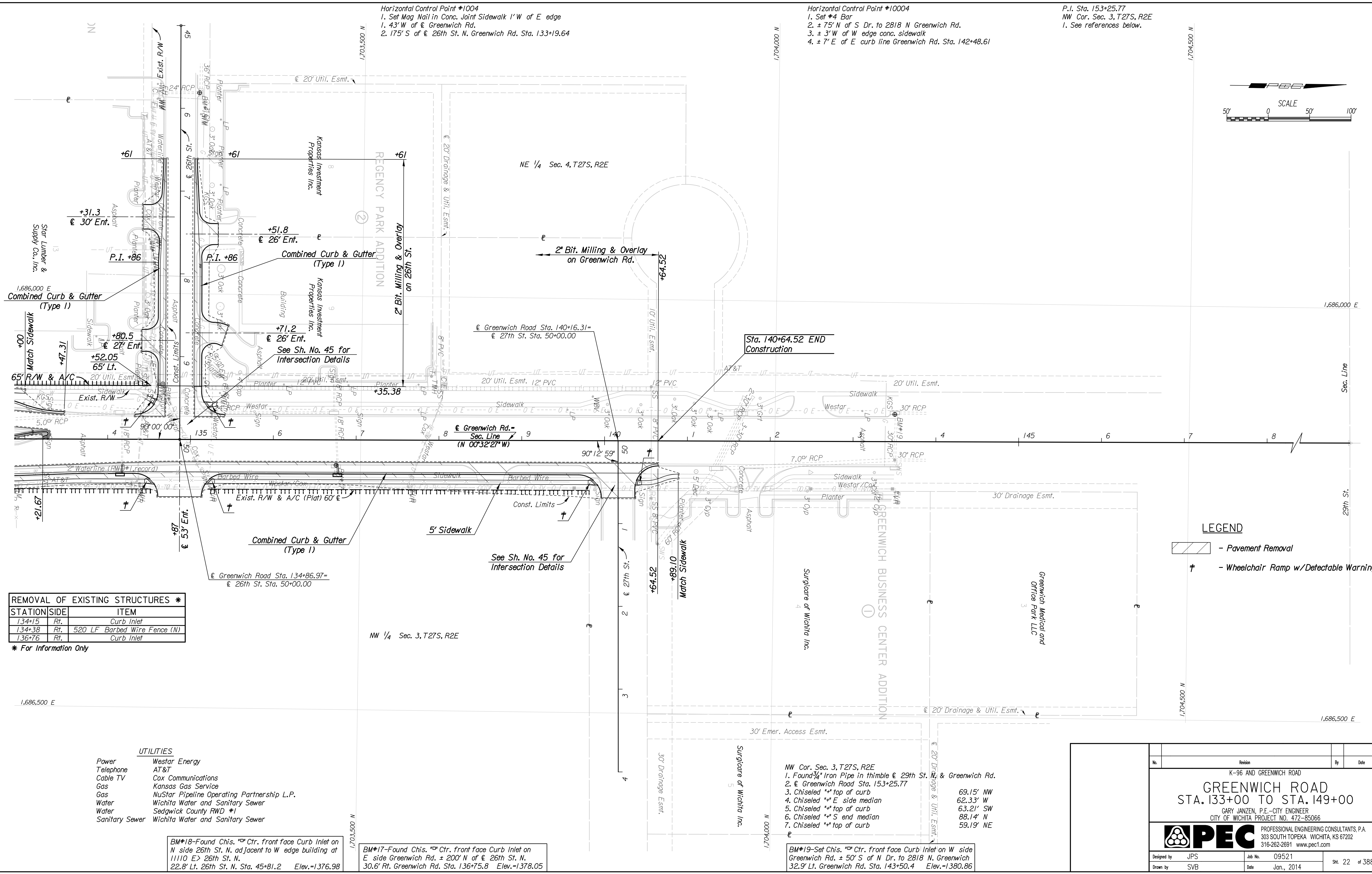
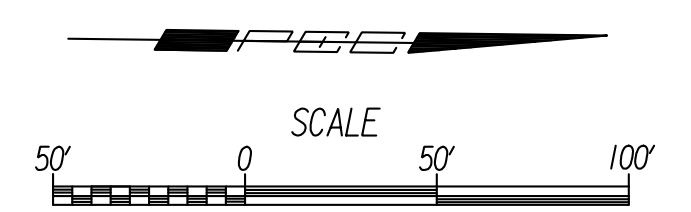


Horizontal Control Point #1004
 1. Set Mag Nail in Conc. Joint Sidewalk 1' W of E edge
 1. 43' W of E Greenwich Rd.
 2. 175' S of E 26th St. N. Greenwich Rd. Sta. 133+19.64

Horizontal Control Point #10004
 1. Set #4 Bar
 2. ± 75' N of S Dr. to 2818 N Greenwich Rd.
 3. ± 3' W of W edge conc. sidewalk
 4. ± 7' E of E curb line Greenwich Rd. Sta. 142+48.61

P.I. Sta. 153+25.77
 NW Cor. Sec. 3, T27S, R2E
 1. See references below.



REMOVAL OF EXISTING STRUCTURES *		
STATION	SIDE	ITEM
134+15	Rt.	Curb Inlet
134+38	Rt.	520 LF Barbed Wire Fence (N)
136+76	Rt.	Curb Inlet

* For Information Only

UTILITIES	
Power	Westar Energy
Telephone	AT&T
Cable TV	Cox Communications
Gas	Kansas Gas Service
Gas	NuStar Pipeline Operating Partnership L.P.
Water	Wichita Water and Sanitary Sewer
Water	Sedgwick County RWD #1
Sanitary Sewer	Wichita Water and Sanitary Sewer

BM#18-Found Chis. "D" Ctr. front face Curb Inlet on N side 26th St. N. adjacent to W edge building at 11110 E > 26th St. N. 22.8' Lt. 26th St. N. Sta. 45+81.2 Elev.=1376.98

BM#17-Found Chis. "D" Ctr. front face Curb Inlet on E side Greenwich Rd. ± 200' N of E 26th St. N. 30.6' Rt. Greenwich Rd. Sta. 136+75.8 Elev.=1378.05

MW Cor. Sec. 3, T27S, R2E
 1. Found 3/4" Iron Pipe in thimble E 29th St. N. & Greenwich Rd.
 2. E Greenwich Road Sta. 153+25.77
 3. Chiseled "D" top of curb 69.15' NW
 4. Chiseled "D" E side median 62.33' W
 5. Chiseled "D" top of curb 63.21' SW
 6. Chiseled "D" S end median 88.14' N
 7. Chiseled "D" top of curb 59.19' NE

BM#19-Set Chis. "D" Ctr. front face Curb Inlet on W side Greenwich Rd. ± 50' S of N Dr. to 2818 N. Greenwich 32.9' Lt. Greenwich Rd. Sta. 143+50.4 Elev.=1380.86

LEGEND

	- Pavement Removal
	- Wheelchair Ramp w/Detectable Warning

Plotted By: cp Date: 12/30/2013 11:34:03 AM
 FILE: I:\2009\0952\Plan\0952-pls133.dgn

No.	Revision	By	Date
K-96 AND GREENWICH ROAD			
GREENWICH ROAD			
STA. 133+00 TO STA. 149+00			
GARY JANZEN, P.E.-CITY ENGINEER CITY OF WICHITA PROJECT NO. 472-85066			
PEC PROFESSIONAL ENGINEERING CONSULTANTS, P.A. 303 SOUTH TOPEKA WICHITA, KS 67202 316-262-2691 www.pec1.com			
Designed by	JPS	Job No.	09521
Drawn by	SVB	Date	Jan., 2014
			Sht. 22 of 388