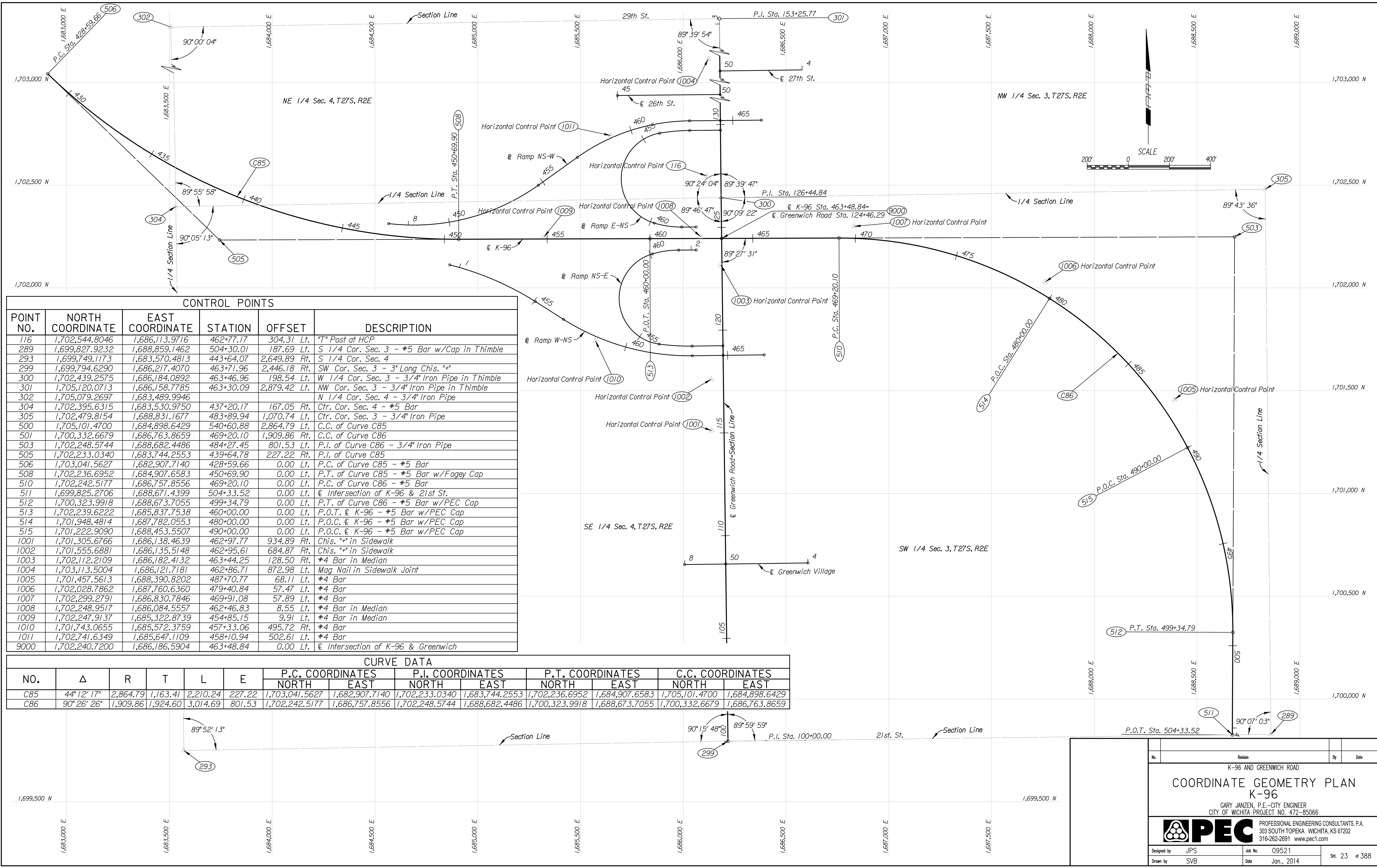


Plotted By: cp Date: 12/30/2013 11:34:04 AM
 FILE: I:\2009\0952\Geometry\0952-Geometry.dgn



CONTROL POINTS					
POINT NO.	NORTH COORDINATE	EAST COORDINATE	STATION	OFFSET	DESCRIPTION
116	1,702,544.8046	1,686,113.9716	462+77.17	304.31 Lt.	"T" Post at HCP
289	1,699,827.9232	1,688,859.1462	504+30.01	187.69 Lt.	S 1/4 Cor. Sec. 3 - #5 Bar w/Cap in Thimble
293	1,699,749.1173	1,683,570.4813	443+64.07	2,649.89 Rt.	S 1/4 Cor. Sec. 4
299	1,699,794.6290	1,686,217.4070	463+71.96	2,446.18 Rt.	SW Cor. Sec. 3 - 3" Long Chis. "A"
300	1,702,439.2575	1,686,184.0892	463+46.96	198.54 Lt.	W 1/4 Cor. Sec. 3 - 3/4" Iron Pipe in Thimble
301	1,705,120.0713	1,686,158.7785	463+30.09	2,879.42 Lt.	NW Cor. Sec. 3 - 3/4" Iron Pipe in Thimble
302	1,705,079.2697	1,683,489.9946			N 1/4 Cor. Sec. 4 - 3/4" Iron Pipe
304	1,702,395.6315	1,683,530.9750	437+20.17	167.05 Rt.	Ctr. Cor. Sec. 4 - #5 Bar
305	1,702,479.8154	1,688,831.1677	483+89.94	1,070.74 Lt.	Ctr. Cor. Sec. 3 - 3/4" Iron Pipe
500	1,705,101.4700	1,684,898.6429	540+60.88	2,864.79 Lt.	C.C. of Curve C85
501	1,700,332.6679	1,686,763.8659	469+20.10	1,909.86 Rt.	C.C. of Curve C86
503	1,702,248.5744	1,688,682.4486	484+27.45	801.53 Lt.	P.I. of Curve C86 - 3/4" Iron Pipe
505	1,702,233.0340	1,683,744.2553	439+64.78	227.22 Rt.	P.I. of Curve C85
506	1,703,041.5627	1,682,907.7140	428+59.66	0.00 Lt.	P.C. of Curve C85 - #5 Bar
508	1,702,236.6952	1,684,907.6583	450+69.90	0.00 Lt.	P.T. of Curve C85 - #5 Bar w/Fogey Cap
510	1,702,242.5177	1,686,757.8556	469+20.10	0.00 Lt.	P.C. of Curve C86 - #5 Bar
511	1,699,825.2706	1,688,671.4399	504+33.52	0.00 Lt.	€ Intersection of K-96 & 21st St.
512	1,700,323.9918	1,688,673.7055	499+34.79	0.00 Lt.	P.T. of Curve C86 - #5 Bar w/PEC Cap
513	1,702,239.6222	1,685,837.7538	460+00.00	0.00 Lt.	P.O.T. € K-96 - #5 Bar w/PEC Cap
514	1,701,948.4814	1,687,782.0553	480+00.00	0.00 Lt.	P.O.C. € K-96 - #5 Bar w/PEC Cap
515	1,701,222.9090	1,688,453.5507	490+00.00	0.00 Lt.	P.O.C. € K-96 - #5 Bar w/PEC Cap
1001	1,701,305.6766	1,686,138.4639	462+97.77	934.89 Rt.	Chis. "A" in Sidewalk
1002	1,701,555.6881	1,686,135.5148	462+95.61	684.87 Rt.	Chis. "A" in Sidewalk
1003	1,702,112.2109	1,686,182.4132	463+44.25	128.50 Rt.	#4 Bar in Median
1004	1,703,113.5004	1,686,121.7181	462+86.71	872.98 Lt.	Mag Nail in Sidewalk Joint
1005	1,701,457.5613	1,688,390.8202	487+70.77	68.11 Lt.	#4 Bar
1006	1,702,028.7862	1,687,760.6360	479+40.84	57.47 Lt.	#4 Bar
1007	1,702,299.2791	1,686,830.7846	469+91.08	57.89 Lt.	#4 Bar
1008	1,702,248.9517	1,686,084.5557	462+46.83	8.55 Lt.	#4 Bar in Median
1009	1,702,247.9137	1,685,322.8739	454+85.15	9.91 Lt.	#4 Bar in Median
1010	1,701,743.0655	1,685,572.3759	457+33.06	495.72 Rt.	#4 Bar
1011	1,702,741.6349	1,685,647.1109	458+10.94	502.61 Lt.	#4 Bar
9000	1,702,240.7200	1,686,186.5904	463+48.84	0.00 Lt.	€ Intersection of K-96 & Greenwich

CURVE DATA													
NO.	Δ	R	T	L	E	P.C. COORDINATES		P.I. COORDINATES		P.T. COORDINATES		C.C. COORDINATES	
						NORTH	EAST	NORTH	EAST	NORTH	EAST	NORTH	EAST
C85	44° 12' 17"	2,864.79	1,163.41	2,210.24	227.22	1,703,041.5627	1,682,907.7140	1,702,233.0340	1,683,744.2553	1,702,236.6952	1,684,907.6583	1,705,101.4700	1,684,898.6429
C86	90° 26' 26"	1,909.86	1,924.60	3,014.69	801.53	1,702,242.5177	1,686,757.8556	1,702,248.5744	1,688,682.4486	1,700,323.9918	1,688,673.7055	1,700,332.6679	1,686,763.8659

No.	Revision	By	Date
K-96 AND GREENWICH ROAD			
COORDINATE GEOMETRY PLAN			
K-96			
GARY JANZEN, P.E.-CITY ENGINEER CITY OF WICHITA PROJECT NO. 472-85066			
PEC PROFESSIONAL ENGINEERING CONSULTANTS, P.A. 303 SOUTH TOPEKA WICHITA, KS 67202 316-262-2691 www.pec1.com			
Designed by	JPS	Job No.	09521
Drawn by	SVB	Date	Jan., 2014
			Sht. 23 of 388