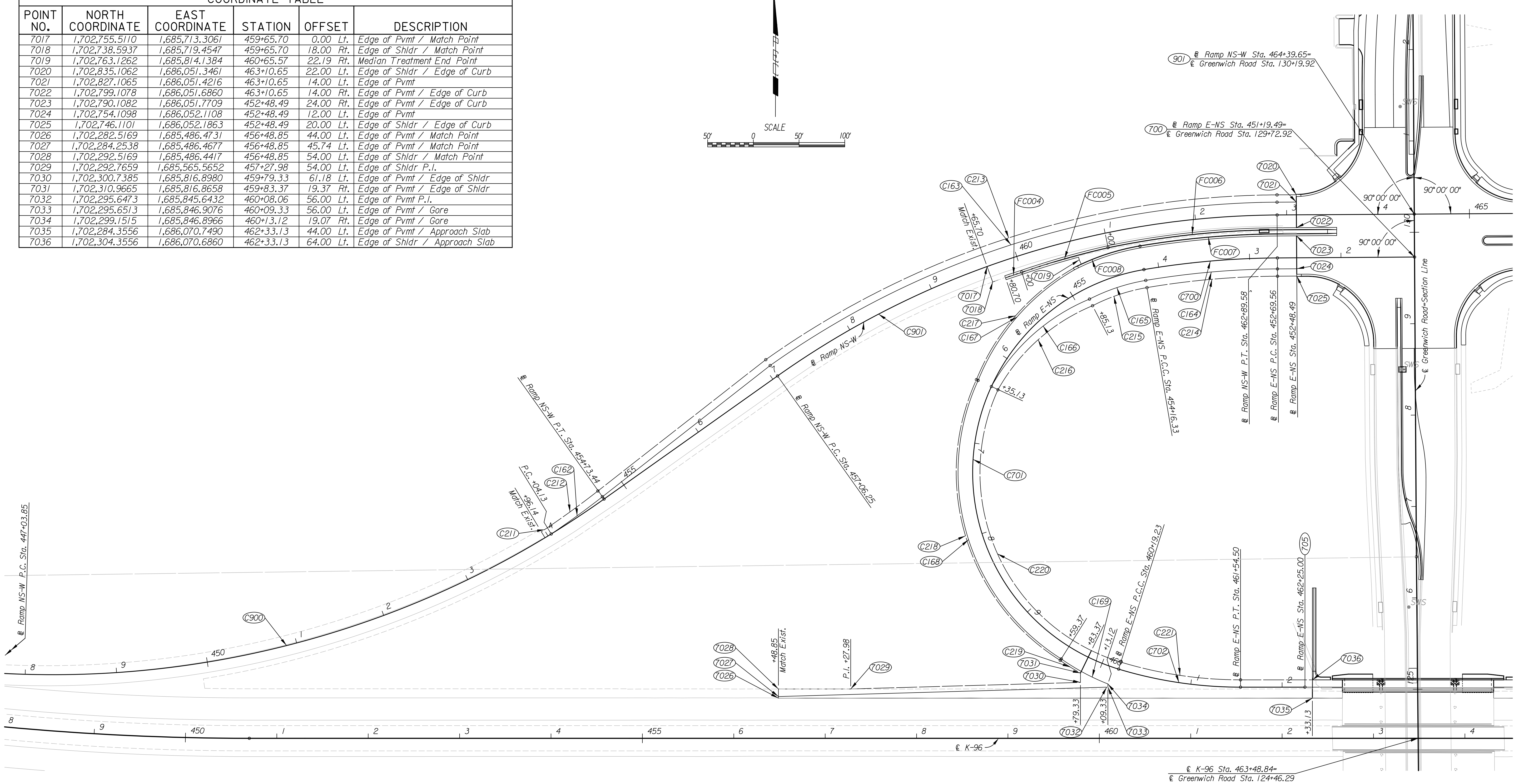
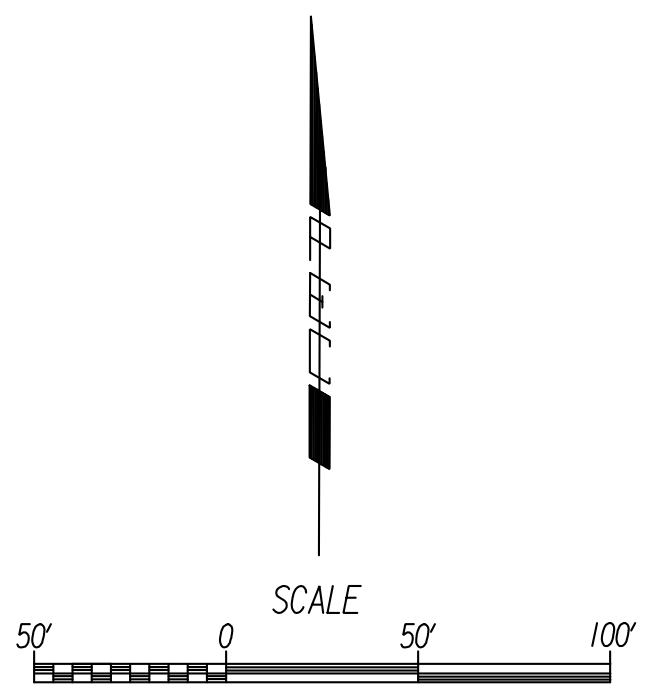


COORDINATE TABLE					
POINT NO.	NORTH COORDINATE	EAST COORDINATE	STATION	OFFSET	DESCRIPTION
7017	1,702,755.5110	1,685,713.3061	459+65.70	0.00 Lt.	Edge of Pvmt / Match Point
7018	1,702,738.5937	1,685,719.4547	459+65.70	18.00 Rt.	Edge of Shldr / Match Point
7019	1,702,763.1262	1,685,814.1384	460+65.57	22.19 Rt.	Median Treatment End Point
7020	1,702,835.1062	1,686,051.3461	463+10.65	22.00 Lt.	Edge of Shldr / Edge of Curb
7021	1,702,827.1065	1,686,051.4216	463+10.65	14.00 Lt.	Edge of Pvmt
7022	1,702,799.1078	1,686,051.6860	463+10.65	14.00 Rt.	Edge of Pvmt / Edge of Curb
7023	1,702,790.1082	1,686,051.7709	452+48.49	24.00 Rt.	Edge of Pvmt / Edge of Curb
7024	1,702,754.1098	1,686,052.1108	452+48.49	12.00 Lt.	Edge of Pvmt
7025	1,702,746.1101	1,686,052.1863	452+48.49	20.00 Lt.	Edge of Shldr / Edge of Curb
7026	1,702,282.5169	1,685,486.4731	456+48.85	44.00 Lt.	Edge of Pvmt / Match Point
7027	1,702,284.2538	1,685,486.4677	456+48.85	45.74 Lt.	Edge of Pvmt / Match Point
7028	1,702,292.5169	1,685,486.4417	456+48.85	54.00 Lt.	Edge of Shldr / Match Point
7029	1,702,292.7659	1,685,565.5652	457+27.98	54.00 Lt.	Edge of Shldr P.I.
7030	1,702,300.7385	1,685,816.8980	459+79.33	61.18 Lt.	Edge of Pvmt / Edge of Shldr
7031	1,702,310.9665	1,685,816.8658	459+83.37	19.37 Rt.	Edge of Pvmt / Edge of Shldr
7032	1,702,295.6473	1,685,845.6432	460+08.06	56.00 Lt.	Edge of Pvmt P.I.
7033	1,702,295.6513	1,685,846.9076	460+09.33	56.00 Lt.	Edge of Pvmt / Gore
7034	1,702,299.1515	1,685,846.8966	460+13.12	19.07 Rt.	Edge of Pvmt / Gore
7035	1,702,284.3556	1,686,070.7490	462+33.13	44.00 Lt.	Edge of Pvmt / Approach Slab
7036	1,702,304.3556	1,686,070.6860	462+33.13	64.00 Lt.	Edge of Shldr / Approach Slab



CONTROL POINTS					
POINT NO.	NORTH COORDINATE	EAST COORDINATE	STATION	OFFSET	DESCRIPTION
700	1,702,767.3271	1,686,180.9918	451+19.49	0.00 Lt.	Intersection of Ramp E-NS & Greenwich
705	1,702,296.3300	1,686,062.5784	462+25.00	0.00 Lt.	End Ramp E-NS
901	1,702,814.3250	1,686,180.5480	464+39.65	0.00 Lt.	Intersection of Ramp NS-W & Greenwich

See Sh. No. 30 for curve data.

Plotted By: cp Date: 12/30/2013 11:34:06 AM  
 FILE: I:\2009\09521\Geometry\09521-Geom\_Rp\_E-NS.dgn

Revision		By	Date
K-96 AND GREENWICH ROAD			
<b>COORDINATE GEOMETRY PLAN</b>			
<b>RAMP E-NS &amp; RAMP NS-W</b>			
GARY JANZEN, P.E.—CITY ENGINEER			
CITY OF WICHITA PROJECT NO. 472-85066			
<b>PEC</b> PROFESSIONAL ENGINEERING CONSULTANTS, P.A.			
303 SOUTH TOPEKA WICHITA, KS 67202			
316-262-2691 www.pec1.com			
Designed by	JPS	Job No.	09521
Drawn by	SVB	Date	Jan., 2014
			Sht. 25 of 388