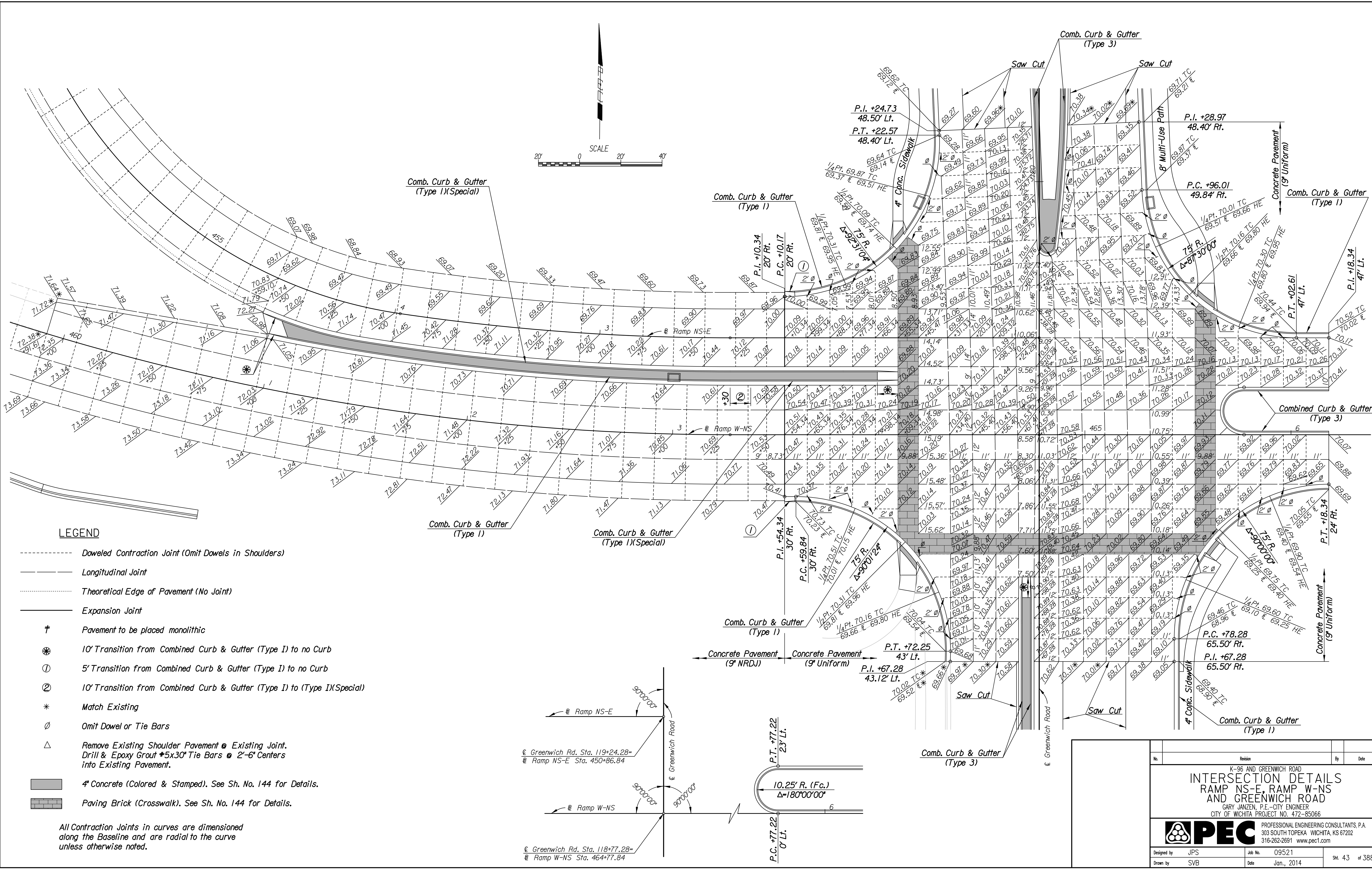
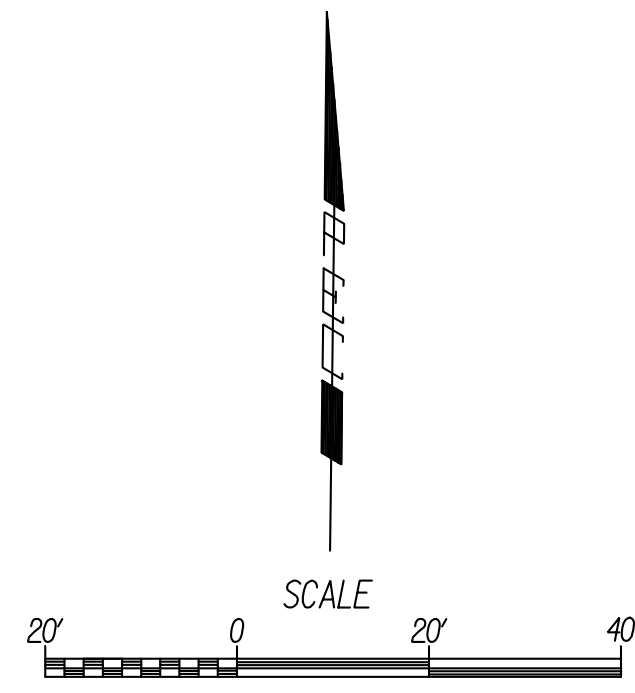


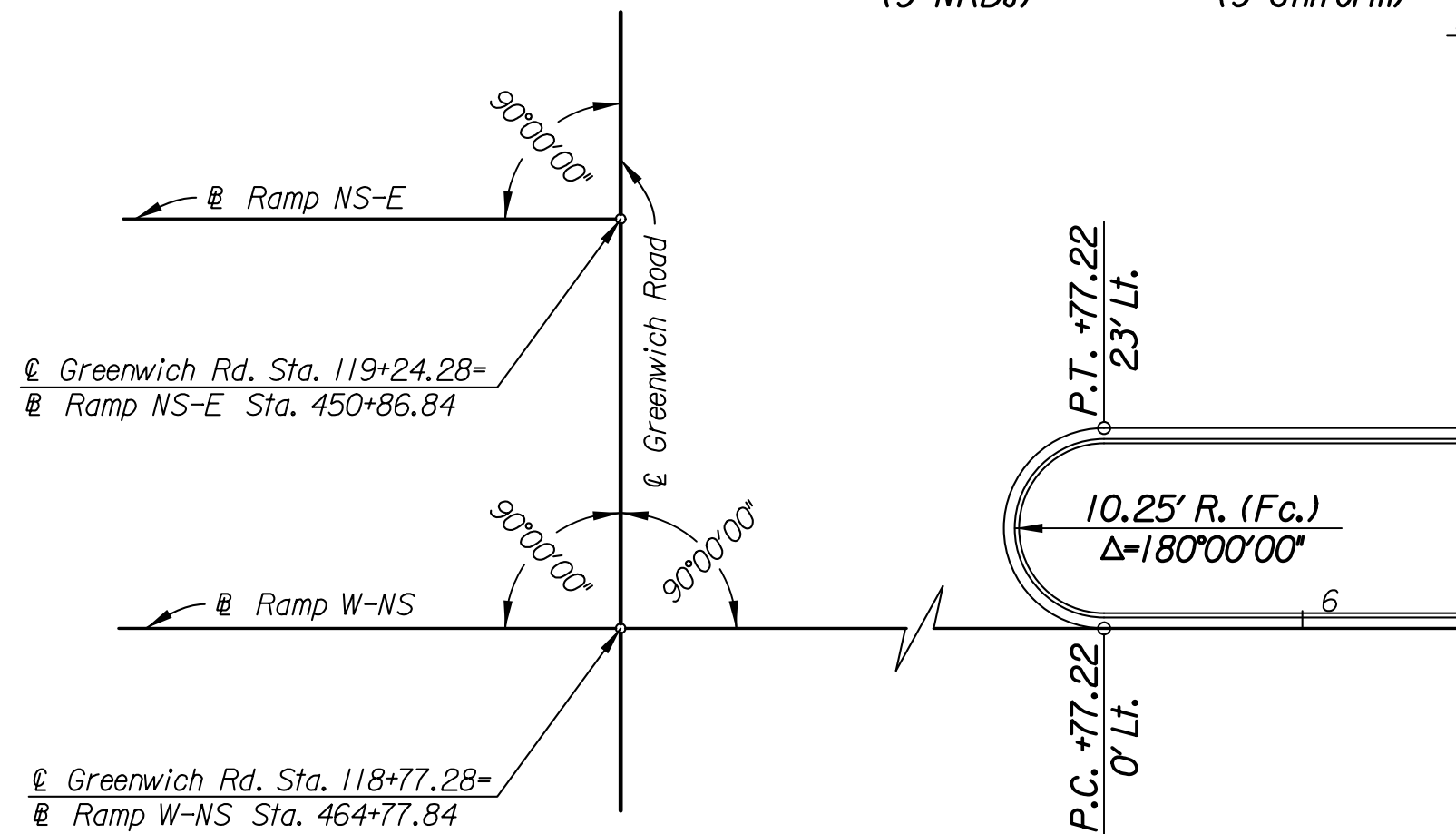
Plotted By: cp  
 Date: 12/30/2013 11:34:30 AM  
 FILE: I:\2009\0952\Intersect\0952-Intersect\_IP\_1NS\_E.dgn



**LEGEND**

- Doweled Contraction Joint (Omit Dowels in Shoulders)
- Longitudinal Joint
- Theoretical Edge of Pavement (No Joint)
- Expansion Joint
- † Pavement to be placed monolithic
- ⊗ 10' Transition from Combined Curb & Gutter (Type I) to no Curb
- ① 5' Transition from Combined Curb & Gutter (Type I) to no Curb
- ② 10' Transition from Combined Curb & Gutter (Type I) to (Type I)(Special)
- \* Match Existing
- ∅ Omit Dowel or Tie Bars
- △ Remove Existing Shoulder Pavement @ Existing Joint. Drill & Epoxy Grout #5x30" Tie Bars @ 2'-6" Centers into Existing Pavement.
- 4" Concrete (Colored & Stamped). See Sh. No. 144 for Details.
- Paving Brick (Crosswalk). See Sh. No. 144 for Details.

All Contraction Joints in curves are dimensioned along the Baseline and are radial to the curve unless otherwise noted.



No.	Revision	By	Date
K-96 AND GREENWICH ROAD <b>INTERSECTION DETAILS</b> RAMP NS-E, RAMP W-NS AND GREENWICH ROAD GARY JANZEN, P.E.-CITY ENGINEER CITY OF WICHITA PROJECT NO. 472-85066			
<b>PEC</b> PROFESSIONAL ENGINEERING CONSULTANTS, P.A. 303 SOUTH TOPEKA WICHITA, KS 67202 316-262-2691 www.pec1.com			
Designed by	JPS	Job No.	09521
Drawn by	SVB	Date	Jan., 2014
			Sht. 43 of 388