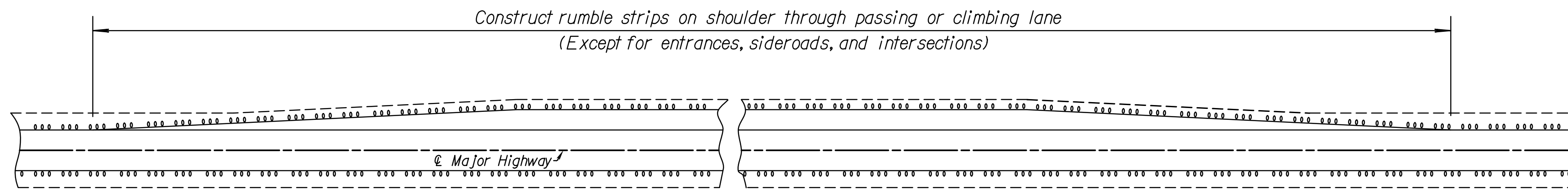


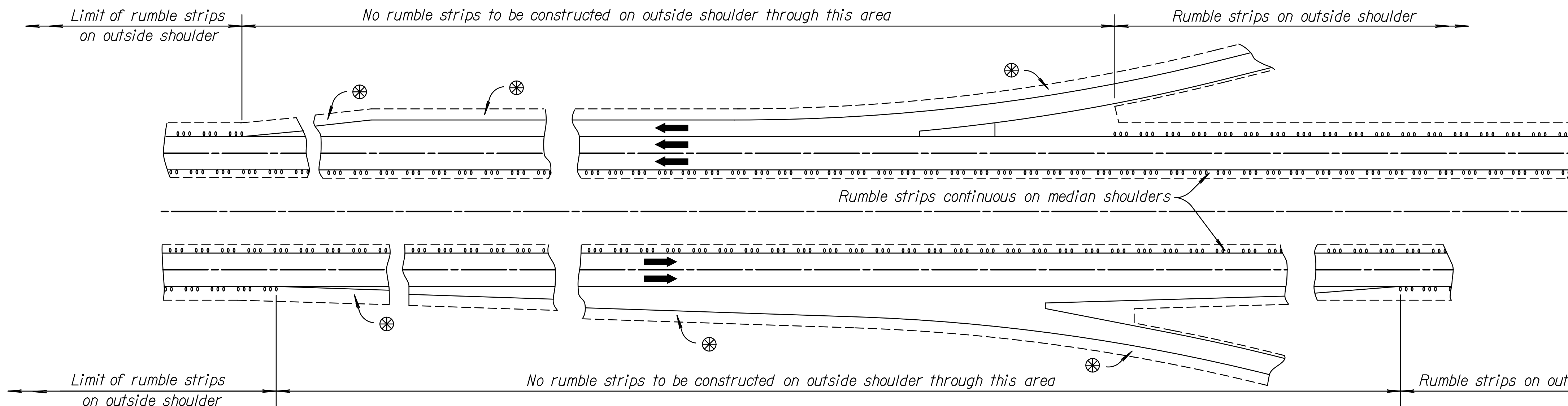
| | | | | |
|--------|-------------|------|-----------|--------------|
| STATE | PROJECT NO. | YEAR | SHEET NO. | TOTAL SHEETS |
| KANSAS | 472-85066 | 2014 | 52 | 388 |

GENERAL NOTES

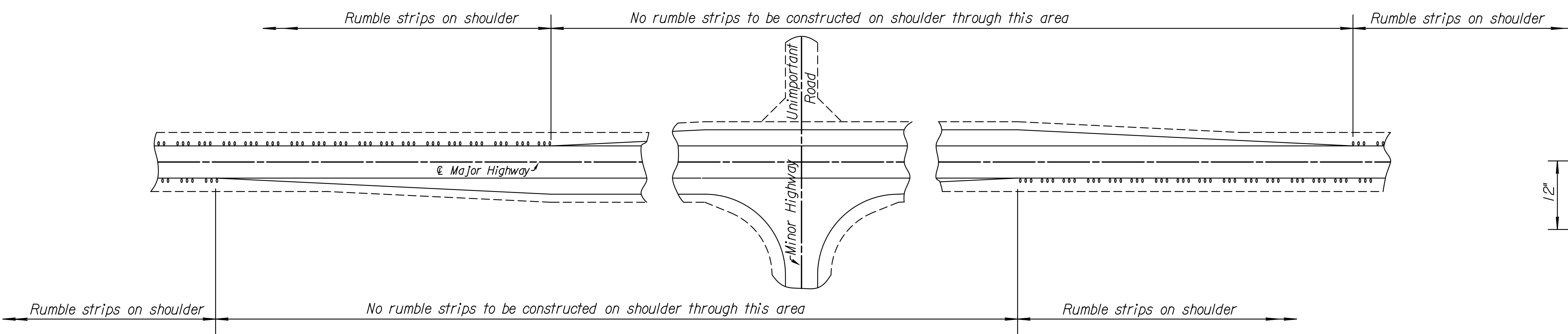
All work and materials required for construction of rumble strips in asphalt or concrete pavement are paid under the bid item "Rumble Strips Milled".
 See typical sections for other surfacing and shoulder details.
 Do not construct rumble strips on bridges or concrete bridge approaches.
 * Construct rumble strips on directional ramps and tapers.
 Adjust the number of depressions when concrete pavement contraction joint spacing is less than 15'-0". No variation in spacing between depressions is permitted. Clearance is 2'-0" (min.) to 3'-0" (max.) between the edge of depression and contraction joint. Center each group of depressions between contraction joints.
 Either rumble strip shape is acceptable with no mixing of shapes on a project unless approved by the engineer.



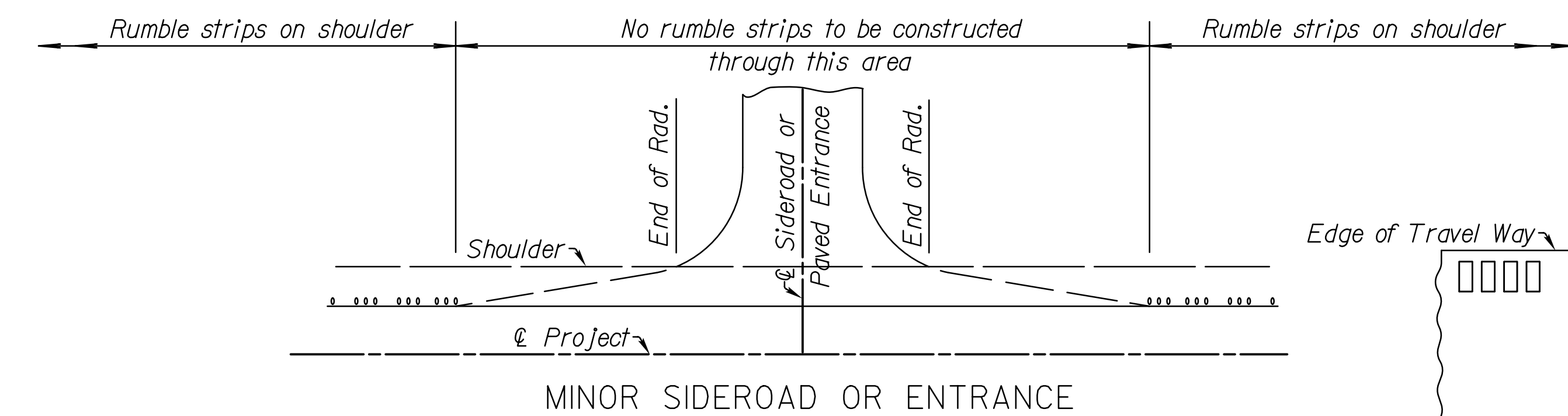
TYPICAL PASSING OR CLIMBING LANES



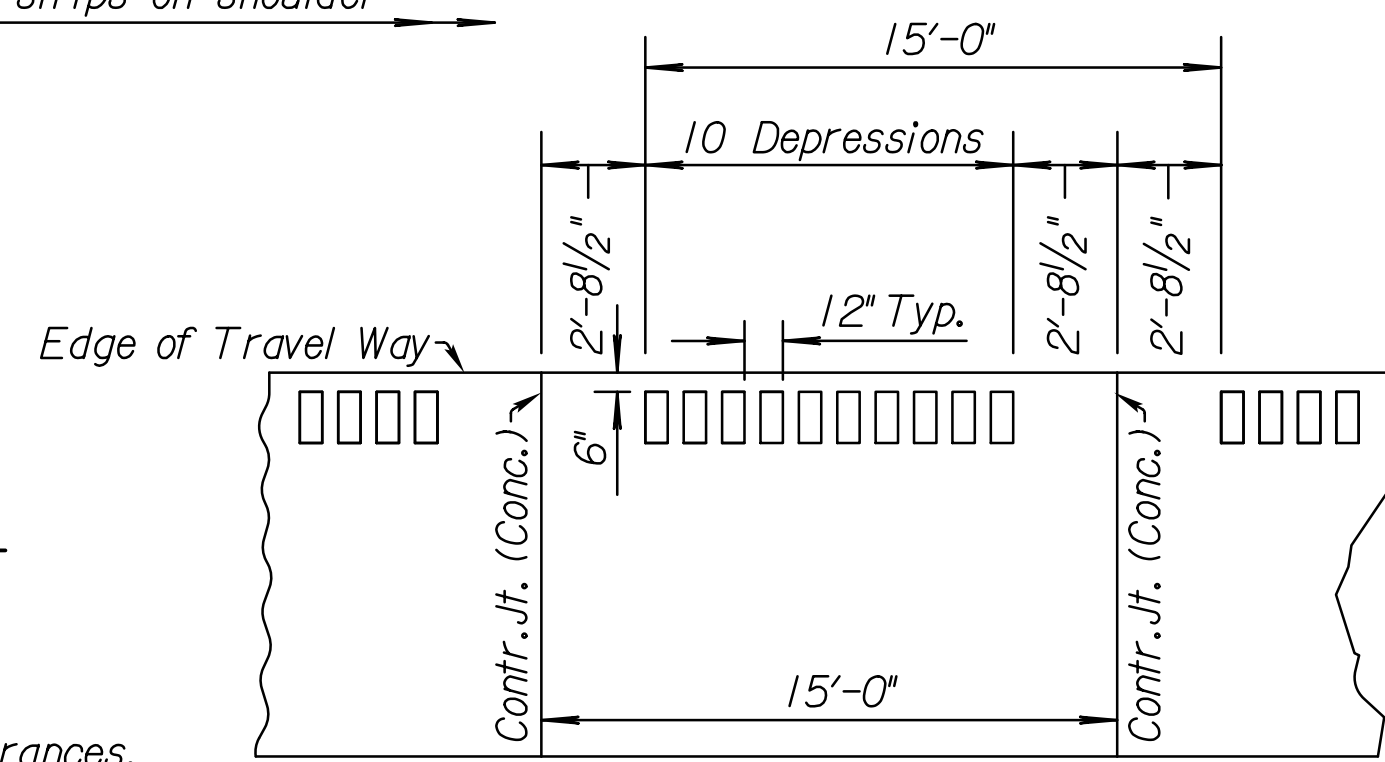
TYPICAL INTERCHANGE RAMP ENTRANCE & EXIT



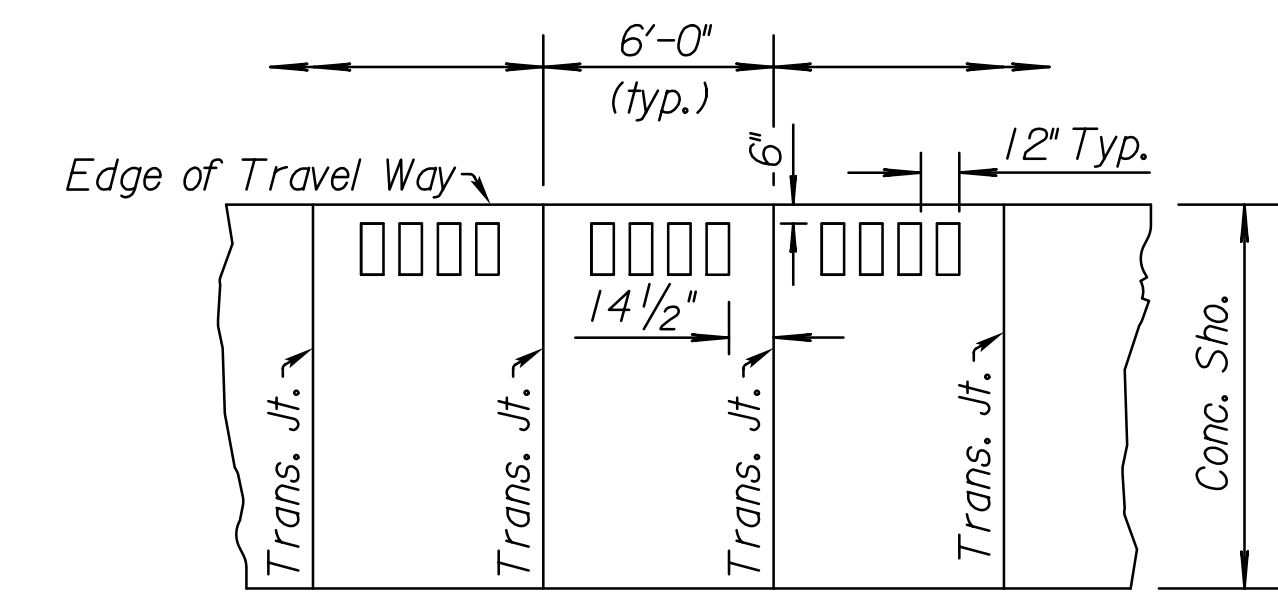
TYPICAL INTERSECTION



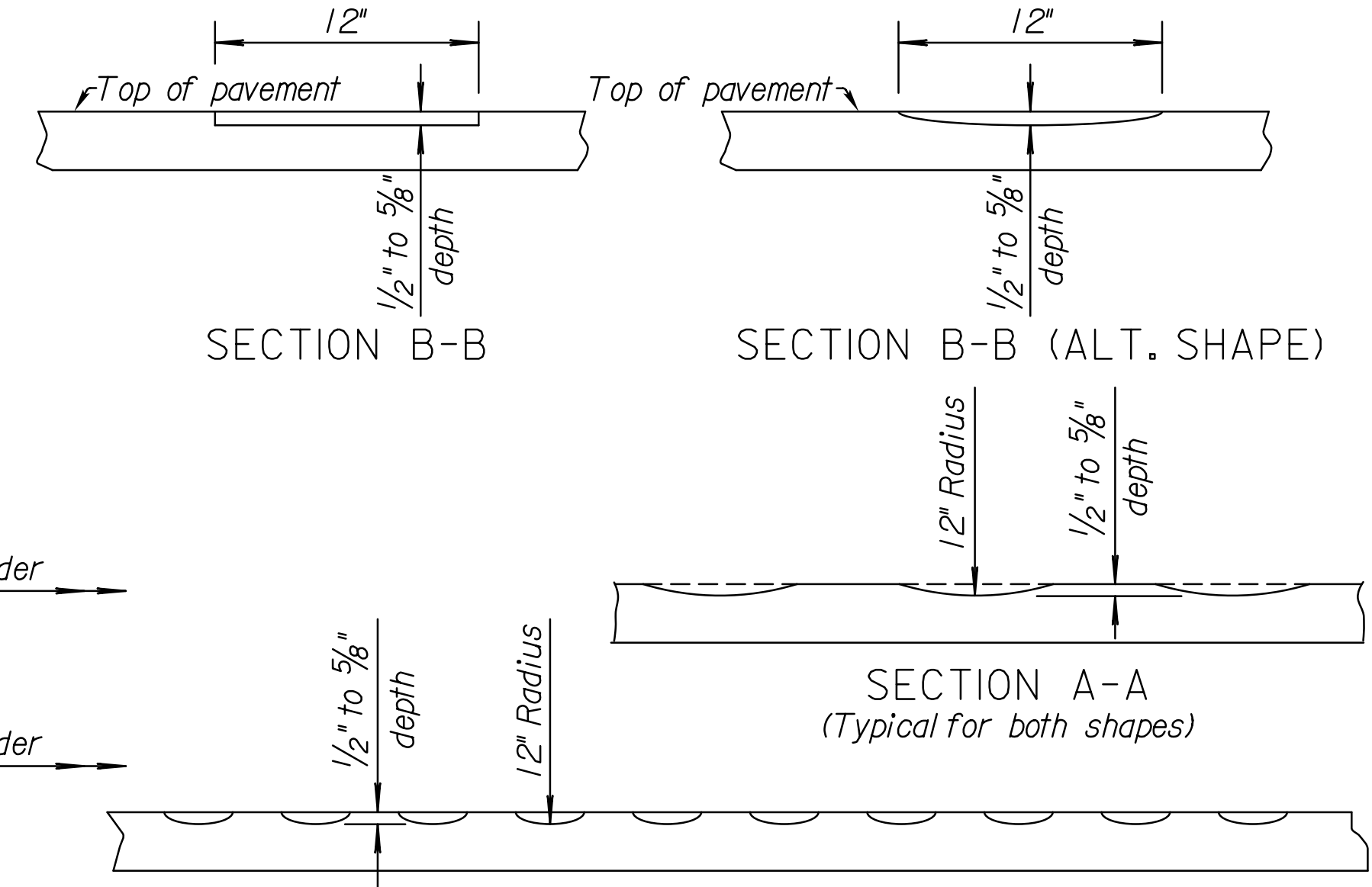
MINOR SIDEROAD OR ENTRANCE



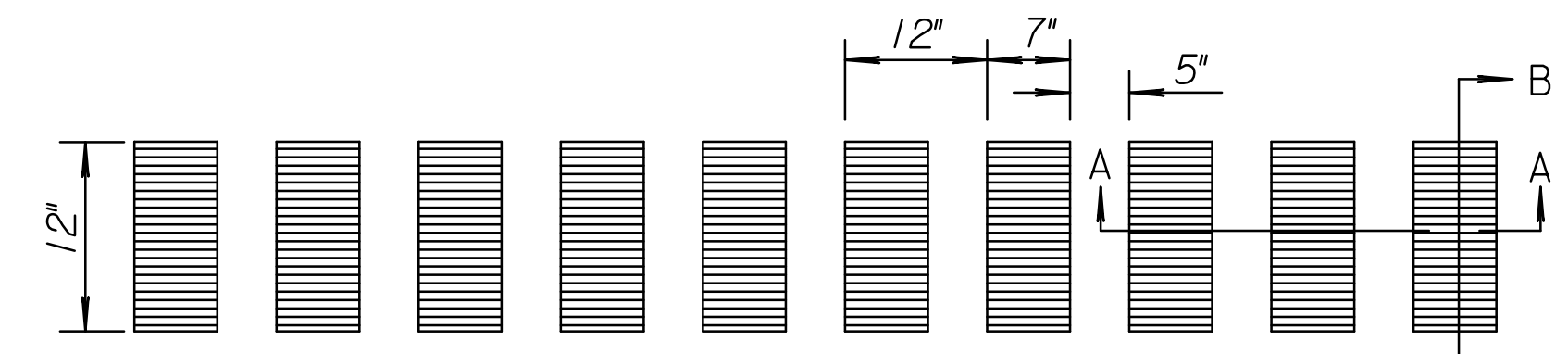
PLAN VIEW-SPACING OF RUMBLE STRIPS



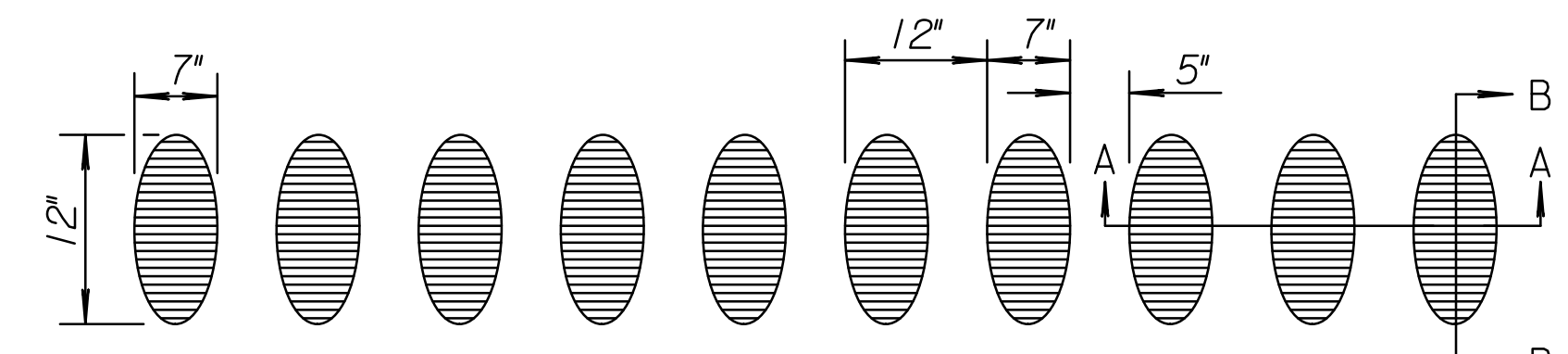
MILLED RUMBLE STRIP on PCCP OVERLAY (≥ 5")



ELEVATION



PLAN DETAILS OF DEPRESSION



PLAN DETAILS OF DEPRESSION (Alternate Shape)

| NO. | DATE | REVISIONS | BY | APP'D |
|-----|-----------|--------------------------------------|--------|--------|
| 6 | 11-8-2012 | Revised Detail, Rumble Strip Dim. | S.W.K. | J.O.B. |
| 5 | 10-10-10 | Add. detail for Rumble strip on PCCP | S.W.K. | J.O.B. |
| 4 | 6-5-07 | Added Sec. B-B (Alt.) | S.W.K. | J.O.B. |
| 3 | 2-2-06 | Rev. Layout and Added Alt. Shape | S.W.K. | J.O.B. |

| KANSAS DEPARTMENT OF TRANSPORTATION | | | |
|---|------------|------------|-----------------|
| MILLED RUMBLE STRIPS (CONCRETE/ASPHALT SHOULDER) SHOULDER WIDTH ≥ 2'-0" | | | |
| RD707 | | | |
| DESIGNED | 5-21-2013 | APP'D. | James O. Brewer |
| DETAILED | | QUANTITIES | Traced Bowser |
| DESIGN CK. | DETAIL CK. | QUAN. CK. | TRACE CK. King |

Note to Designer: Construct rumble strips on high speed and/or high traffic volume ramps on directional type interchanges.
 Drawn By: cp
 Plotted: 30-DEC-2013 13:34
 File: I:\2009\09521\Standards\09521-rd707.dgn