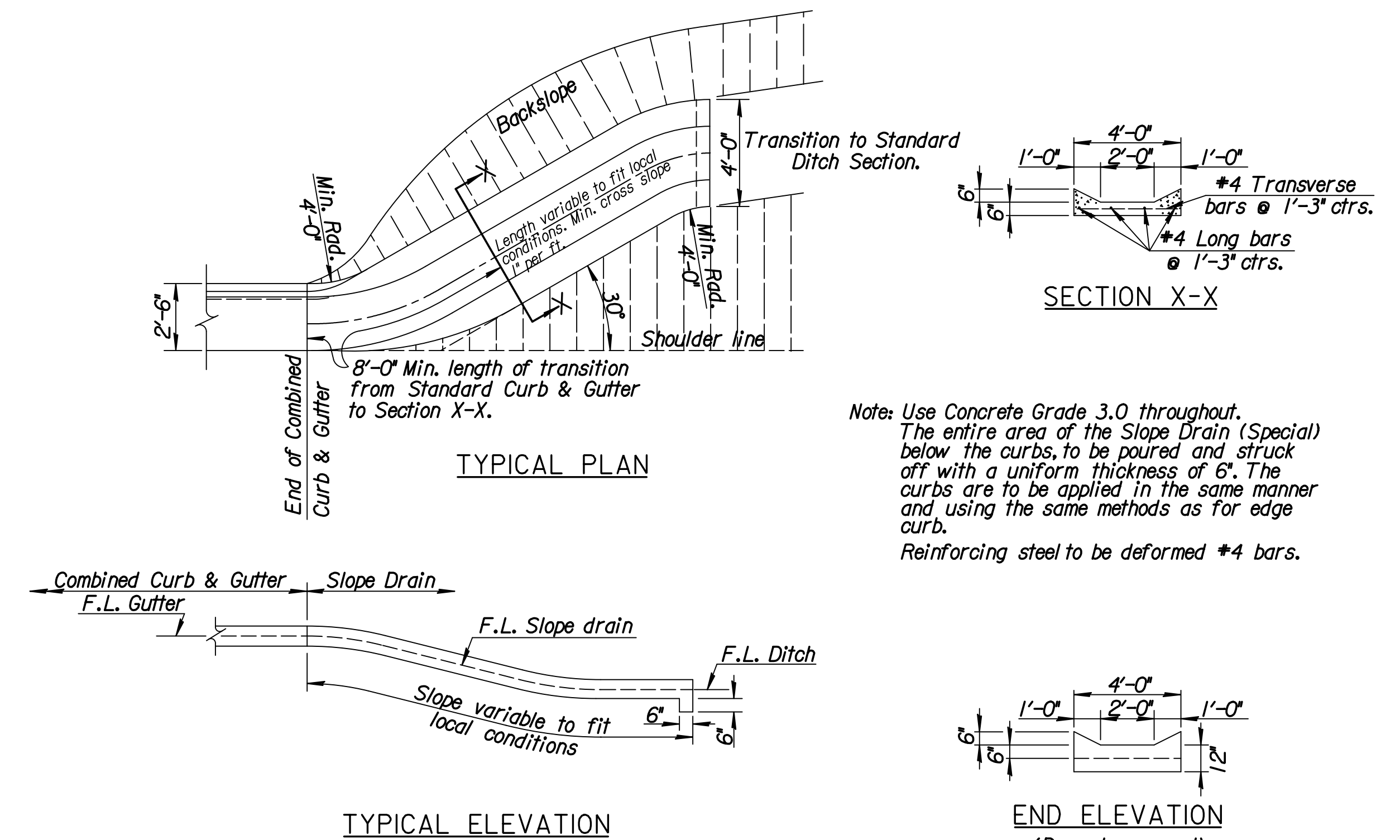


Concrete collars shall be provided at connection to existing conduits where, in the opinion of the Engineer, a collar is required for a satisfactory connection. Concrete Grade 3.0 or the mix used in concrete pavement shall be used throughout. Concrete collars will not be paid for directly, but shall be considered Subsidiary to the various pipes involved.

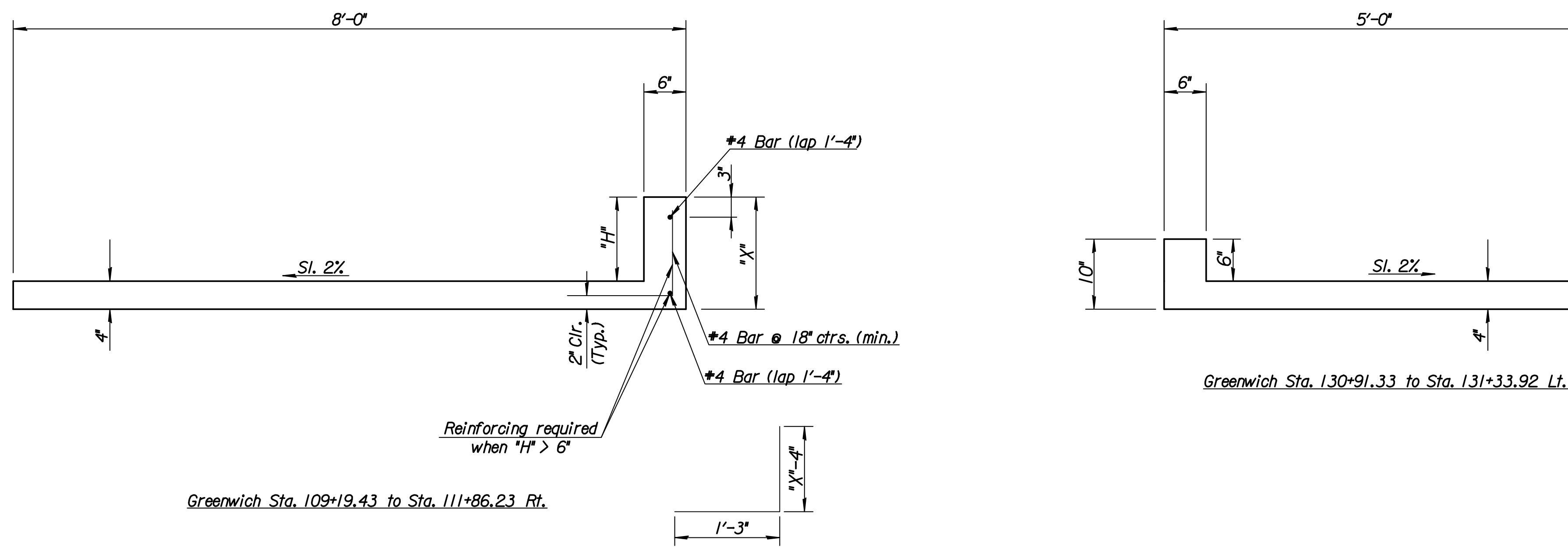
CONCRETE COLLAR DETAILS



Note: Use Concrete Grade 3.0 throughout. The entire area of the Slope Drain (Special) below the curbs, to be poured and struck off with a uniform thickness of 6". The curbs are to be applied in the same manner and using the same methods as for edge curb. Reinforcing steel to be deformed #4 bars.

Adopted from KDOT STD. NO. RD628

SLOPE DRAIN (SPECIAL)



Greenwich Sta. 109+19.43 to Sta. 111+86.23 Rt.

Greenwich Sta. 130+91.33 to Sta. 131+33.92 Lt.

Reinforcing required when "H" > 6"

SIDEWALK PROTECTION CURB DETAILS

| STATION | TOP ELEVATION | | "H" | "X" |
|-----------|---------------|------------|--------|-------|
| | SIDEWALK | PROT. CURB | | |
| 109+19.43 | 1367.11 | 1367.11 | 0'-0" | 0'-4" |
| 109+22.97 | 1367.03 | 1369.13 | 2'-1" | 2'-5" |
| 110+00.00 | 1367.39 | 1369.13 | 1'-9" | 2'-1" |
| 111+20.00 | 1367.70 | 1369.13 | 1'-5" | 1'-9" |
| 111+81.23 | 1368.19 | 1369.13 | 0'-11" | 1'-3" |
| 111+86.23 | 1368.20 | 1368.20 | 0'-0" | 0'-4" |

| | | | |
|---|----------|---|----------------|
| No. | Revision | By | Date |
| K-96 AND GREENWICH ROAD MISCELLANEOUS DETAILS GARY JANZEN, P.E.-CITY ENGINEER CITY OF WICHITA PROJECT NO. 472-85066 | | | |
| | | PROFESSIONAL ENGINEERING CONSULTANTS, P.A. 303 SOUTH TOPEKA WICHITA, KS 67202 316-262-2691 www.pec1.com | |
| Designed by | JPS | Job No. | 09521 |
| Drawn by | SVB | Date | Jan., 2014 |
| | | | Sht. 63 of 388 |