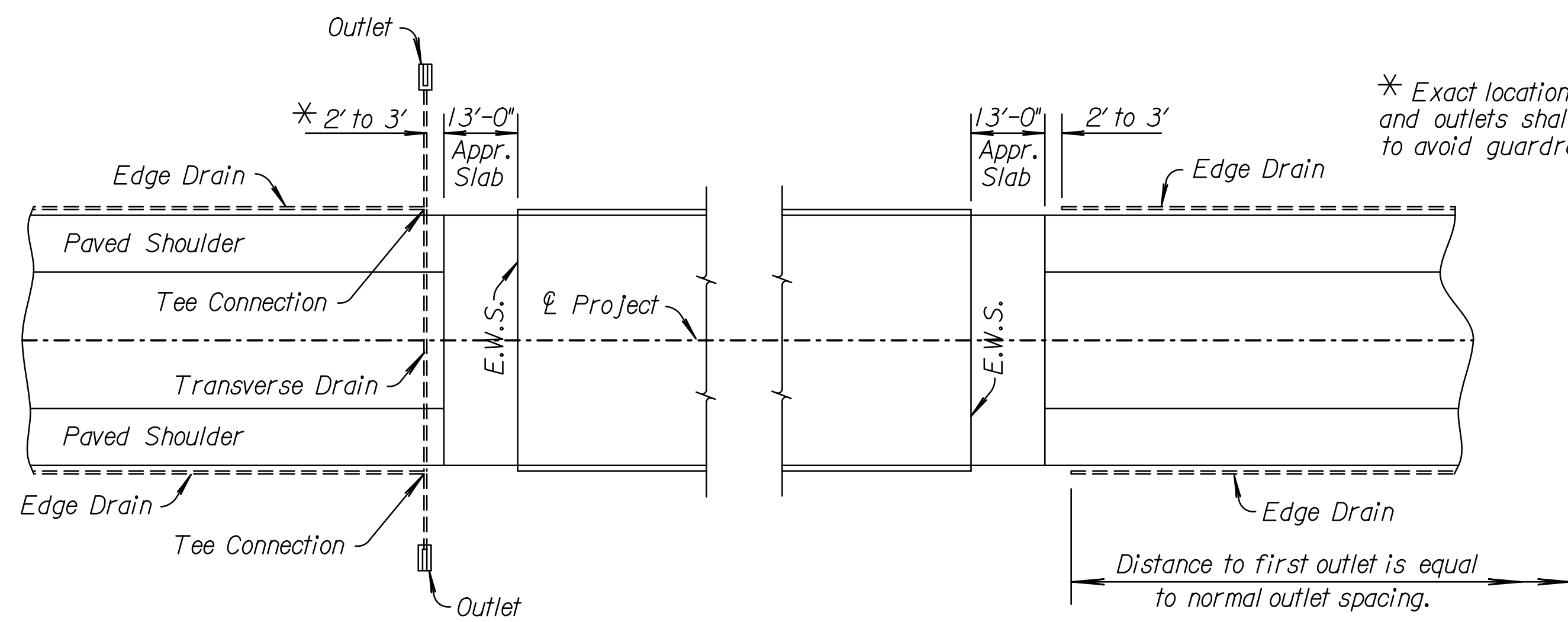
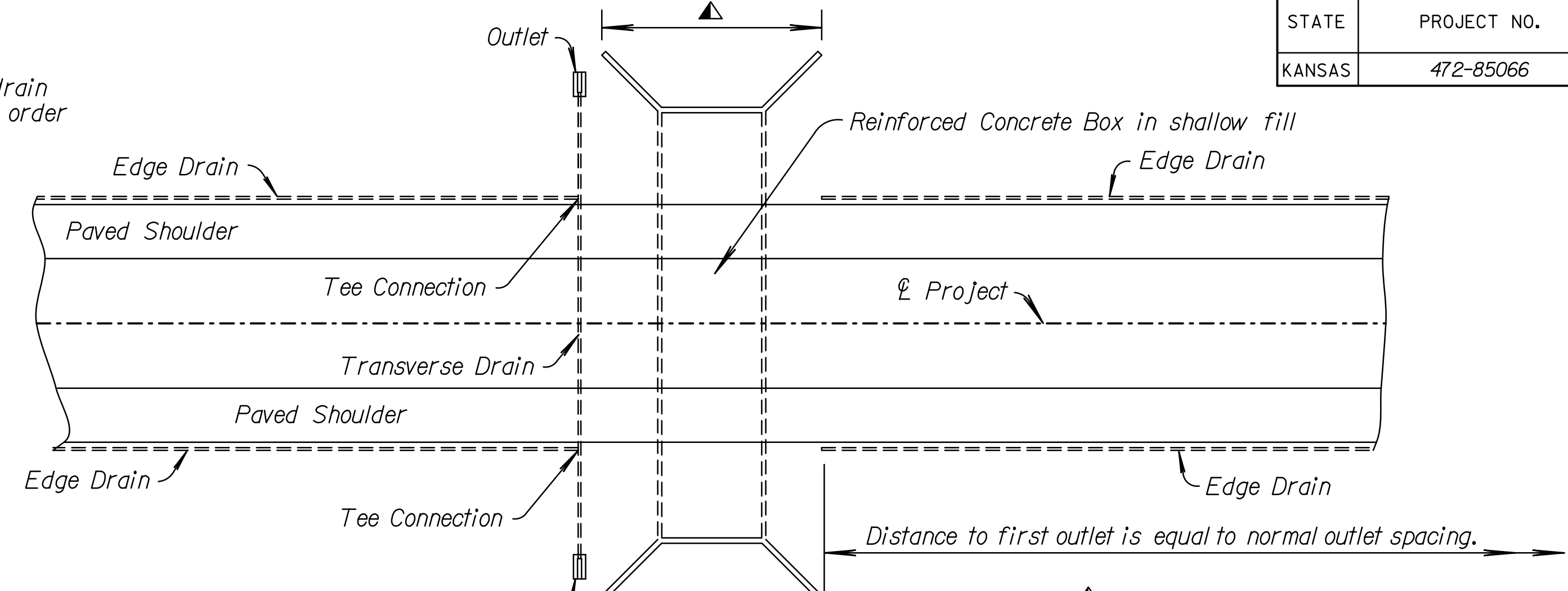


STATE	PROJECT NO.	YEAR	SHEET NO.	TOTAL SHEETS
KANSAS	472-85066	2014	67	388

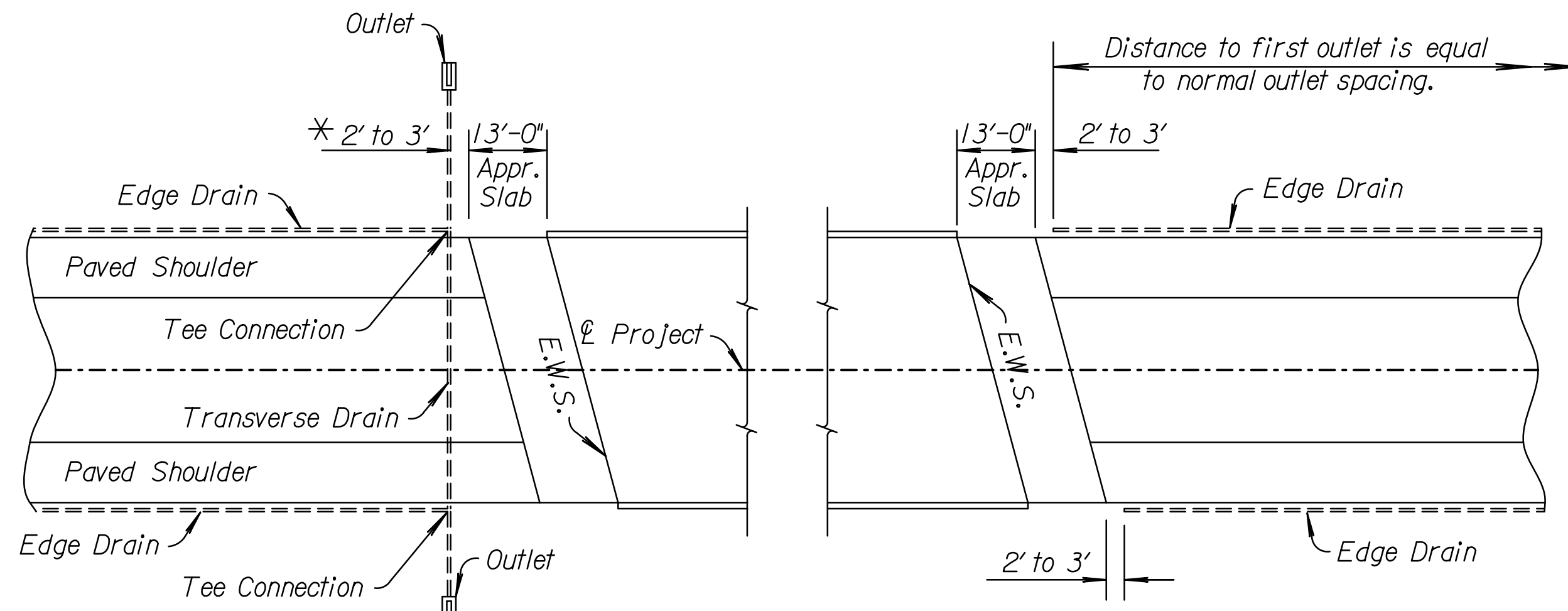


PLAN (Normal Bridge Approach)

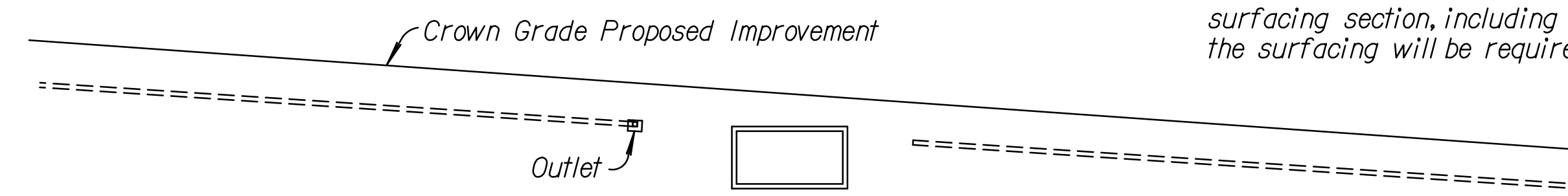


PLAN

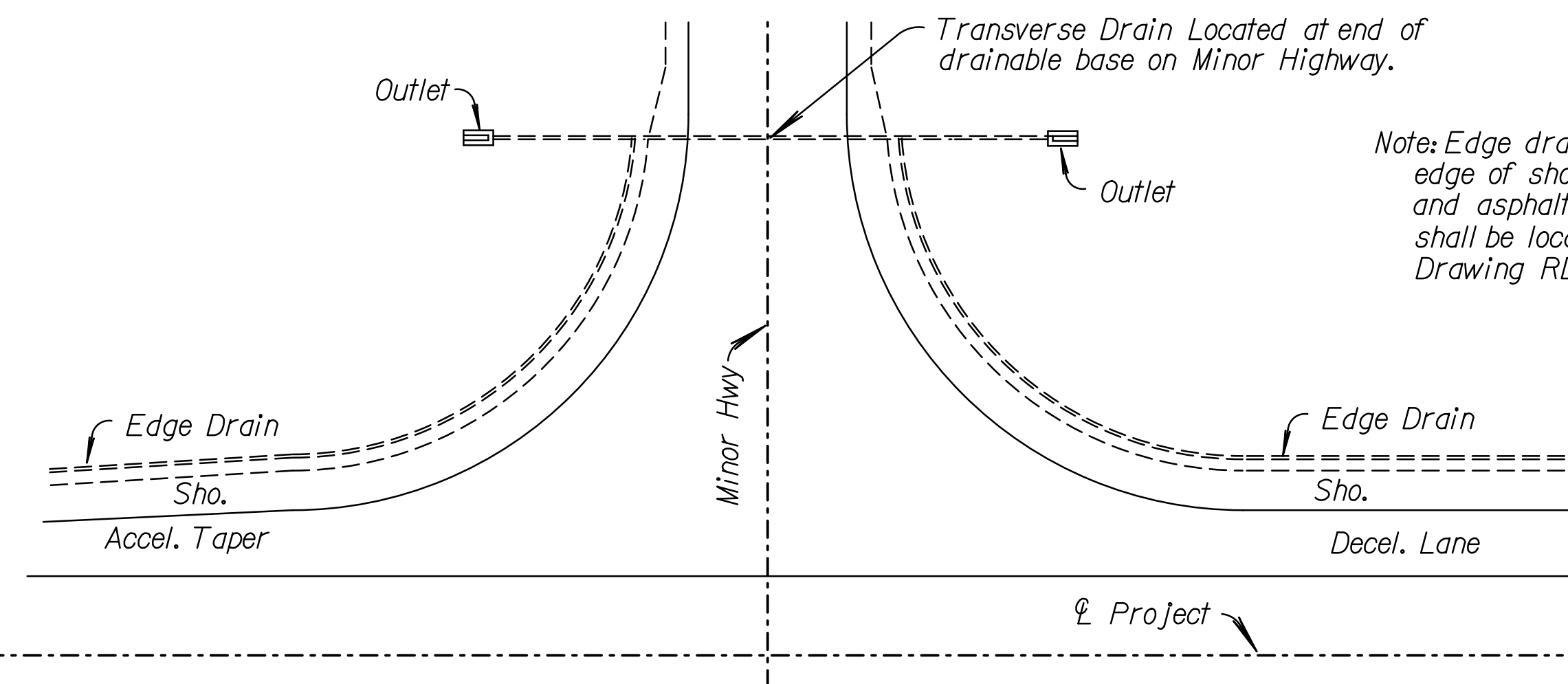
▲ Note: When the clearance to the top of the RCB will not support the full surfacing section, including the edge drain, the drainable base should be terminated and the remaining surfacing modified by the Engineer to accommodate the conditions. When the clearance to the top of the RCB will support the full surfacing section, including the edge drain, no modification to the surfacing will be required.



PLAN (Skewed Bridge Approach)

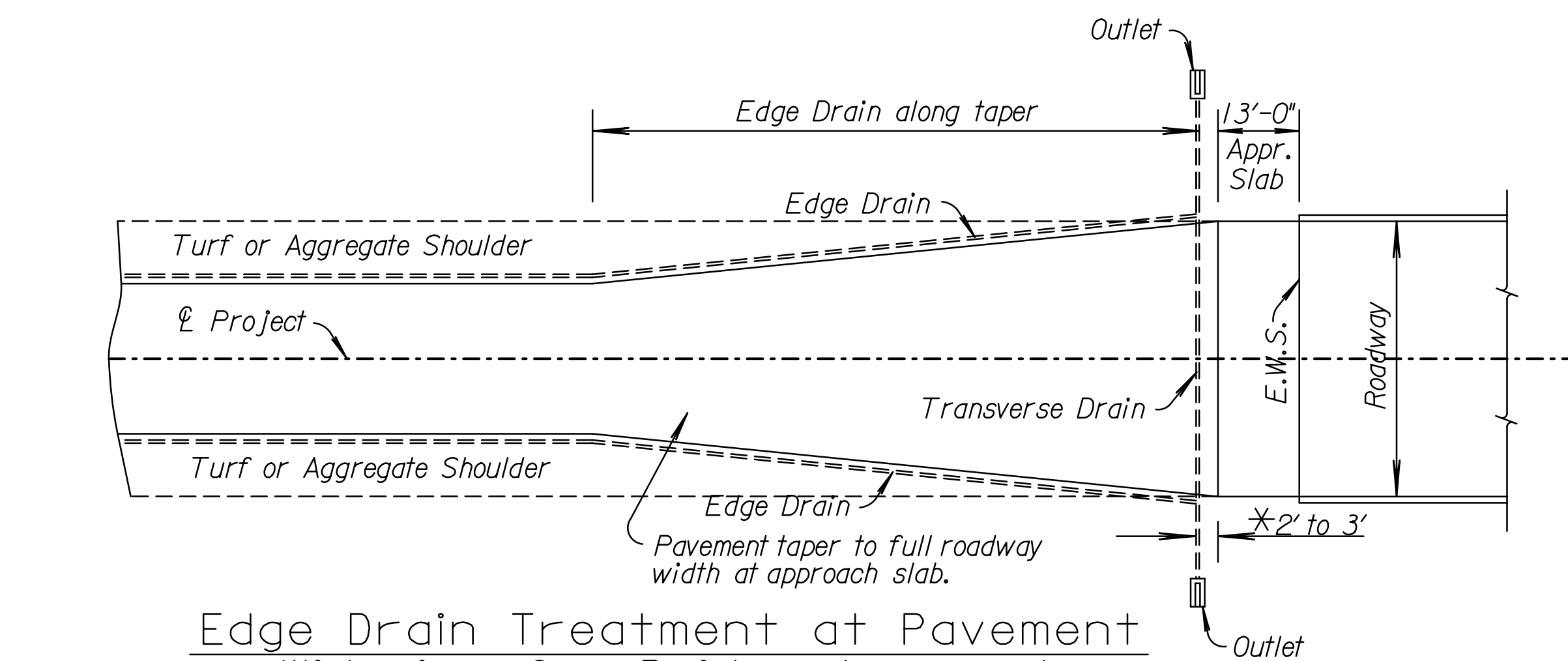


PROFILE  
EDGE DRAIN TREATMENT AT LOW FILL CULVERT

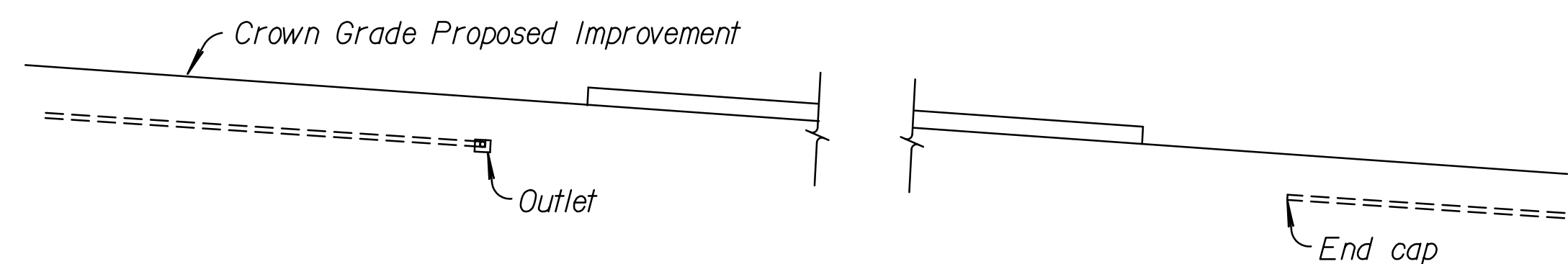


EDGE DRAIN TREATMENT AT INTERSECTION

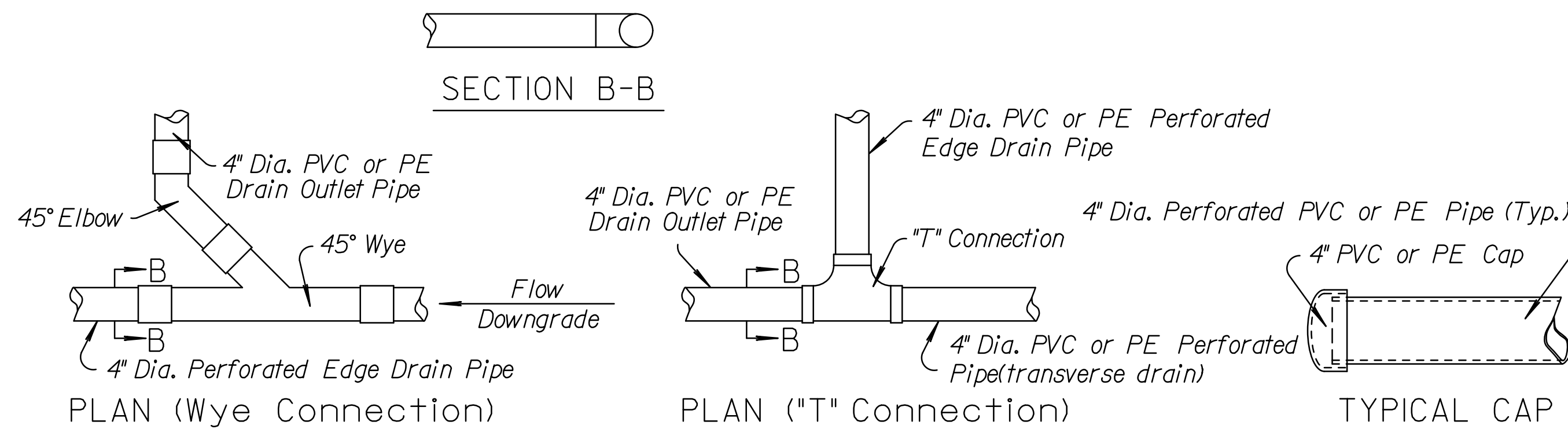
Note: Edge drains on this sheet are shown at the outside edge of shoulder. For non-surfaced or composite shoulders and asphalt surface with surfaced shoulders, the edge drain shall be located at the edge of the driving lane. See Standard Drawing RD654 for details.



Edge Drain Treatment at Pavement Widening for Bridge Approach



TYPICAL PROFILE  
EDGE DRAIN TREATMENT AT BRIDGE APPROACH



PLAN (Wye Connection)

PLAN ("T" Connection)

TYPICAL CAP

TYPICAL CONNECTION DETAILS

NO.	DATE	REVISIONS	BY	APP'D
3	1-10-07	Changed bituminous to asphalt	S.W.K.	J.O.B.
2	2-26-04	Revised guard fence to guardrail	S.W.K.	J.O.B.
1	10-13-99	Added Typical Outlet Connection Det.	R.J.S.	J.O.B.

KANSAS DEPARTMENT OF TRANSPORTATION

EDGE DRAINS  
Special Details

RD655		APP'D. James O. Brewer	
DESIGNED	08-31-04	QUANTITIES	TRACED BOWSER
DESIGN CK.	DETAIL CK.	QUAN. CK.	TRACE CK. Seitz

Drawn By: cp  
Plotted: 30-DEC-2013 13:34  
File: I:\2009\09521\Standards\09521-rd655.dgn