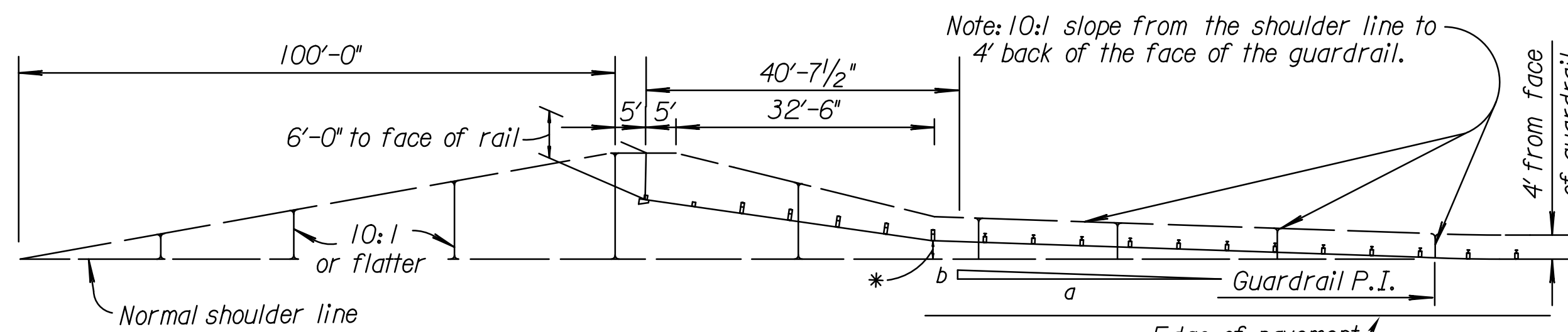


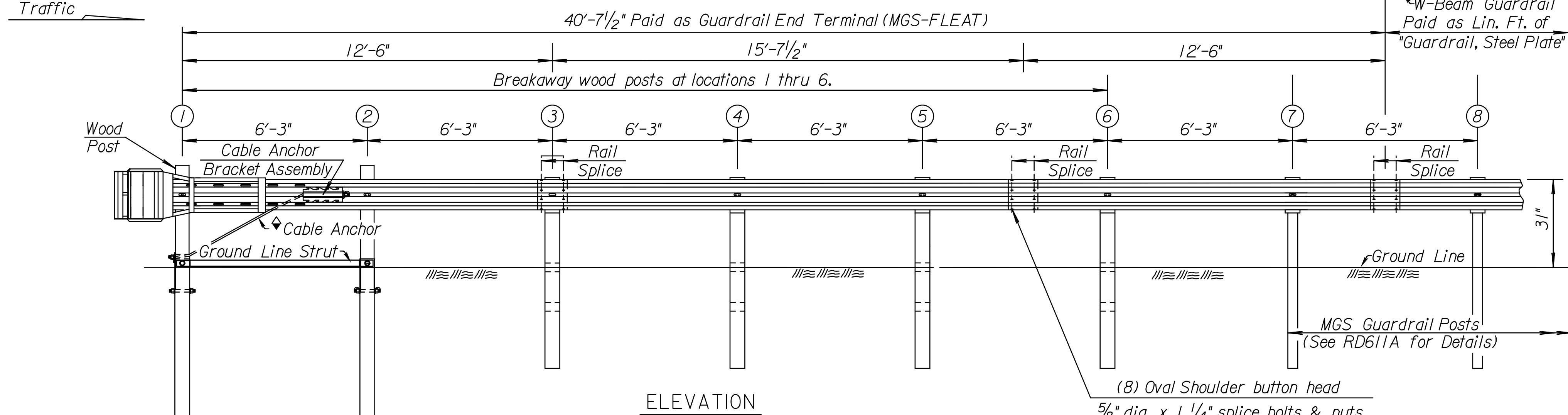
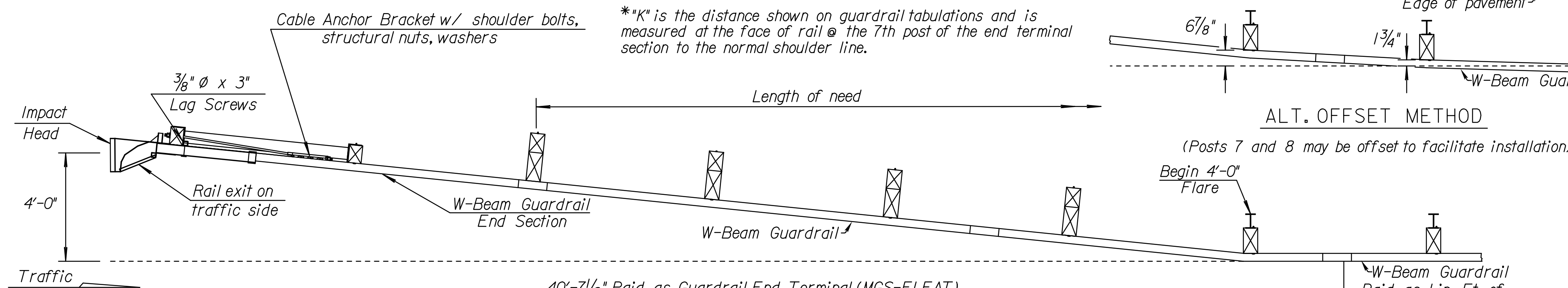
STATE	PROJECT NO.	YEAR	SHEET NO.	TOTAL SHEETS
KANSAS	472-85066	2014	75	388

Note: The minimum length of w-beam guardrail required between the three-beam transition and the guardrail end terminal is 12'-6" for all installations.



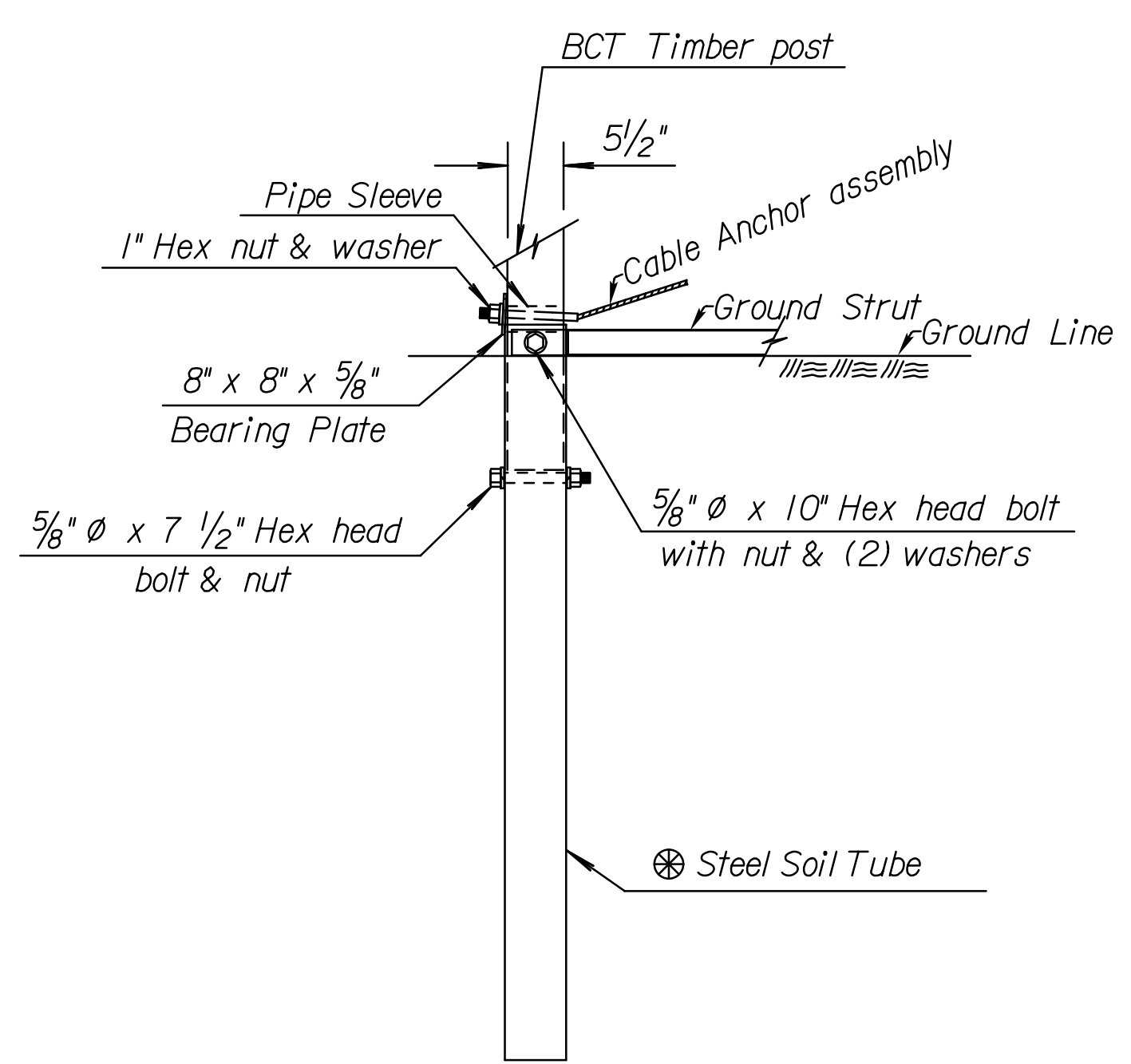
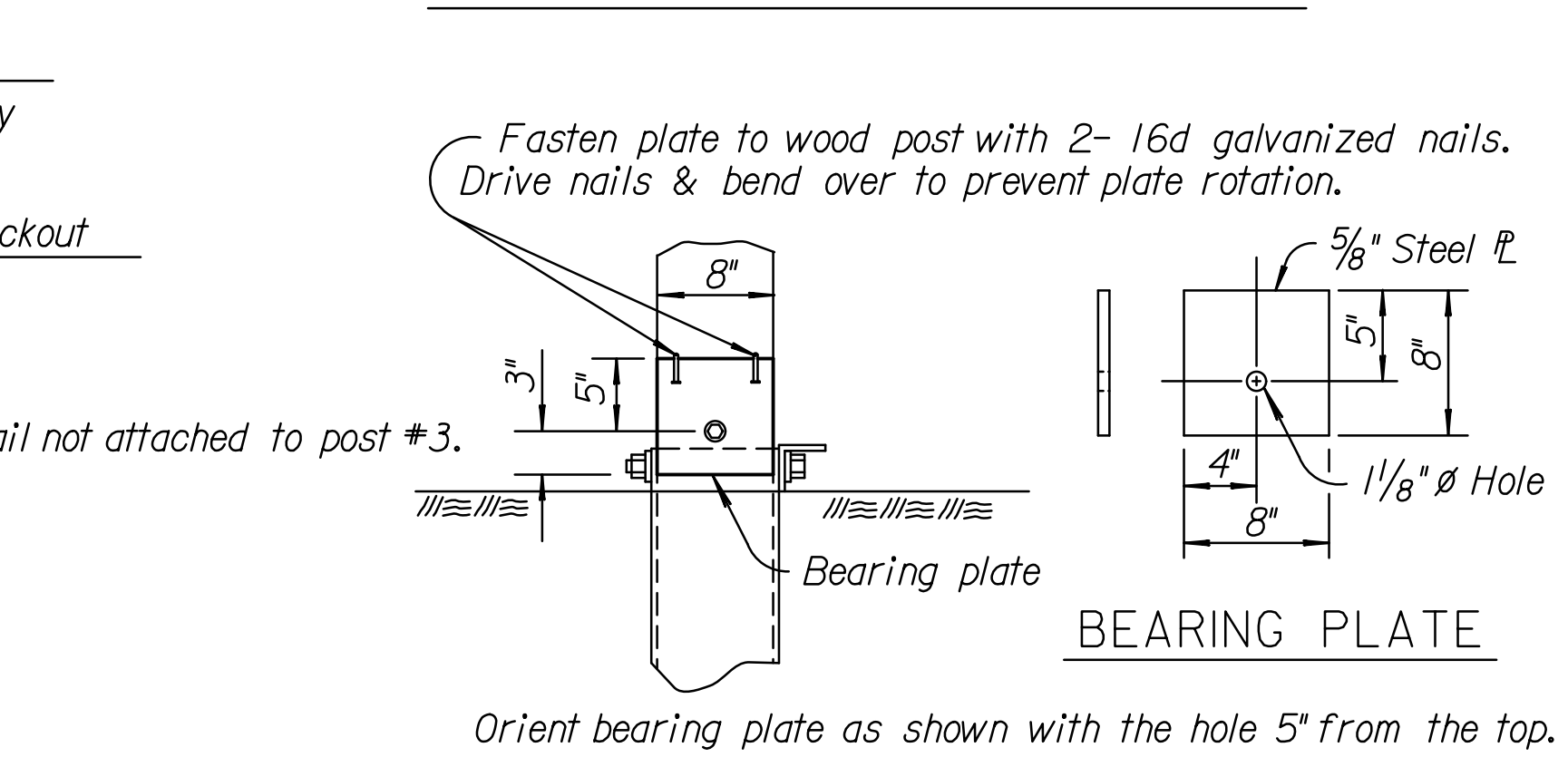
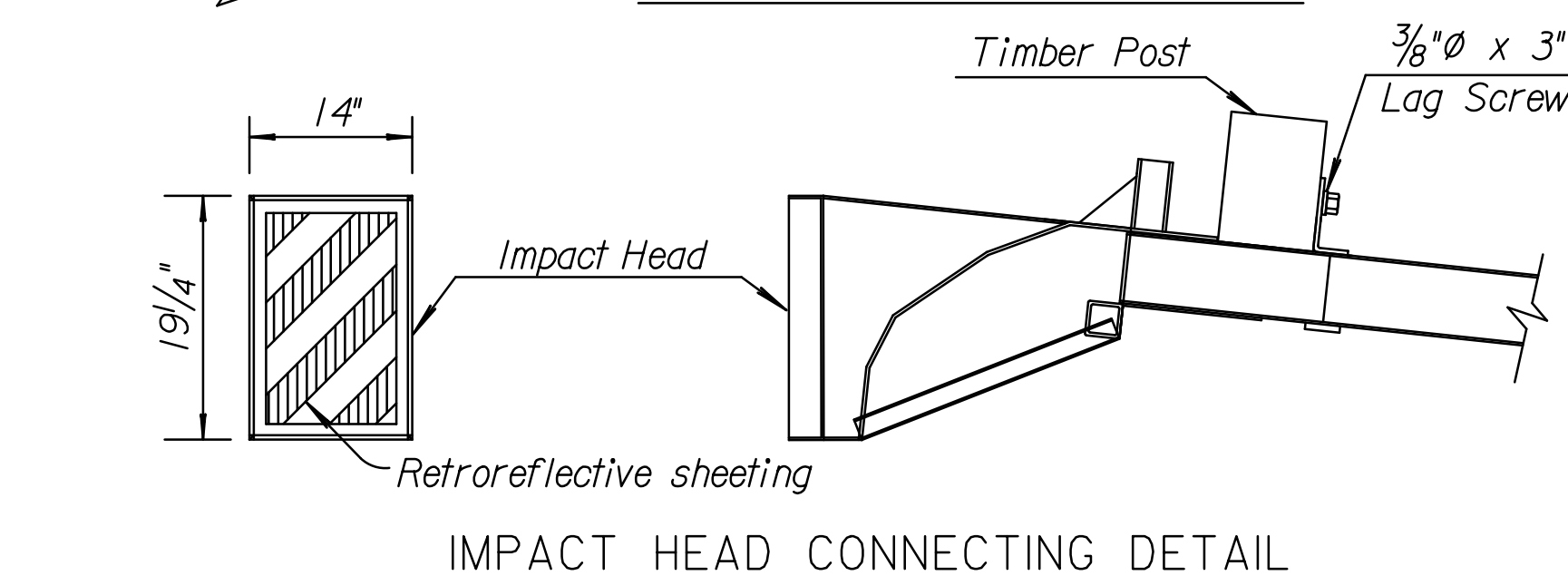
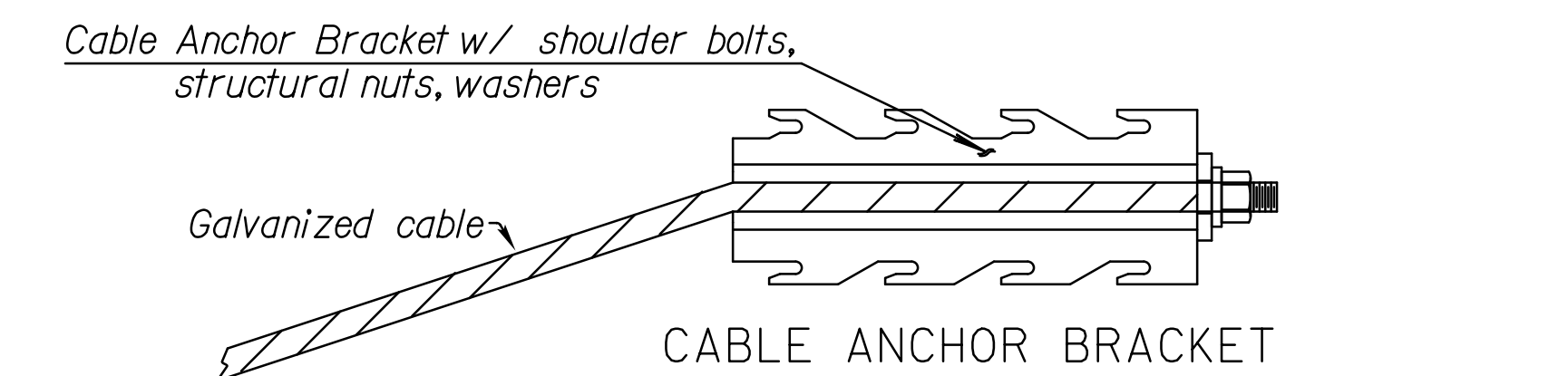
Note: 10:1 slope from the shoulder line to 4' back of the face of the guardrail.

**K is the distance shown on guardrail tabulations and is measured at the face of rail @ the 7th post of the end terminal section to the normal shoulder line.

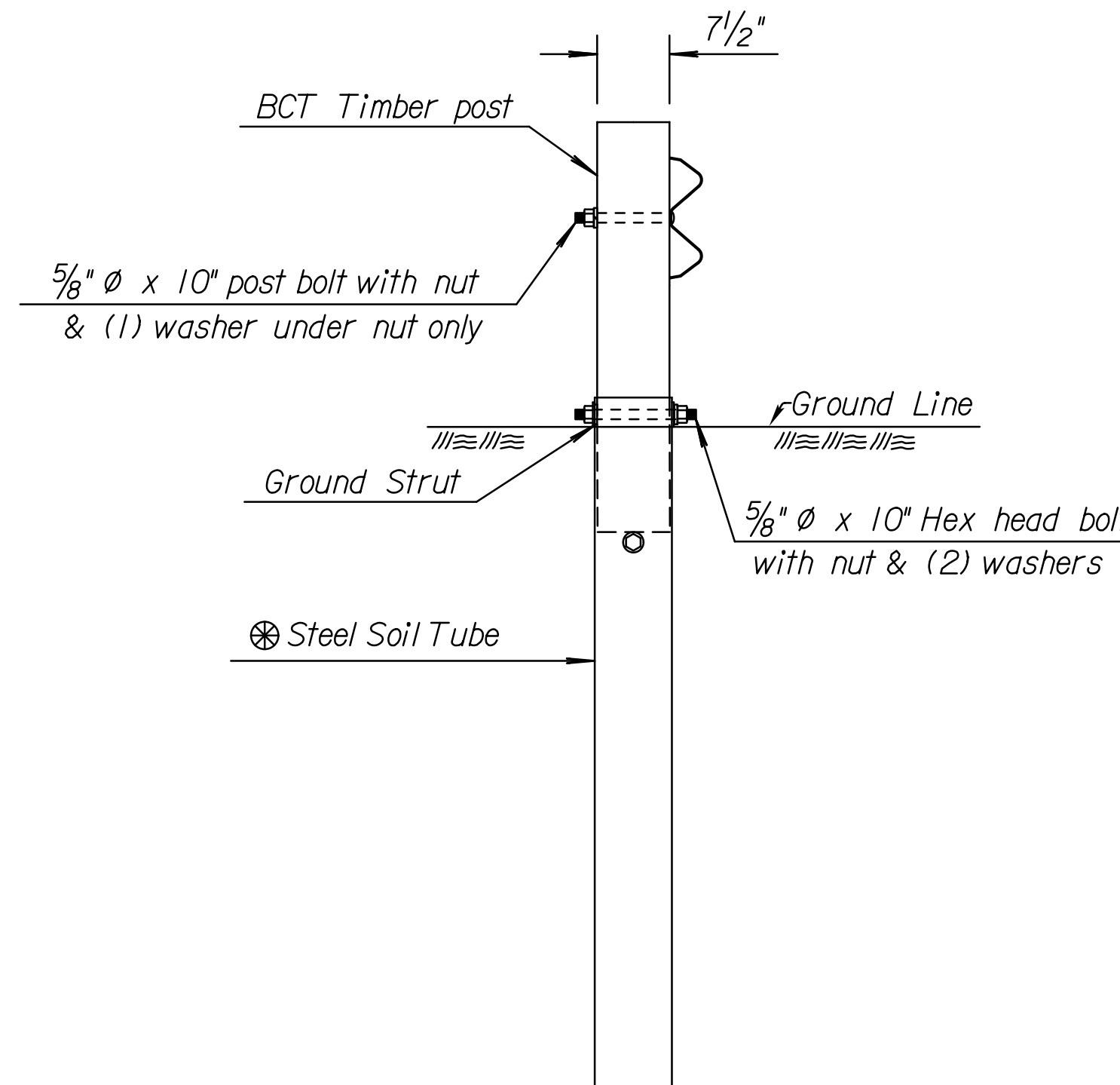


After final assembly recheck cable to be taut.

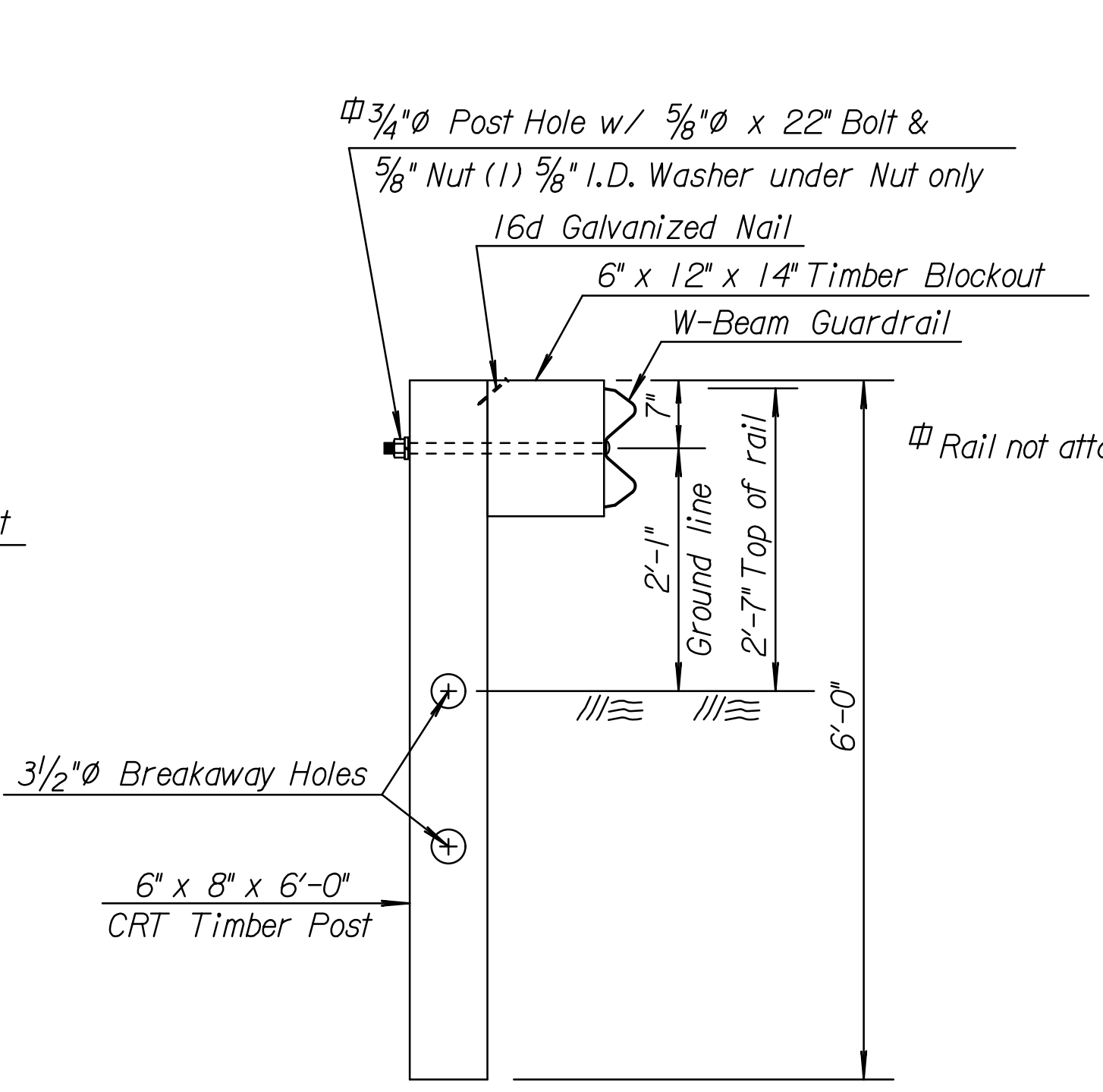
GENERAL NOTES
 Use approved wood (shown & described) or steel posts ① through ⑥ on the (MGS-FLEAT) provided by the manufacturer. Terminal post type used is independent of post type used on the remainder of the installation. No mixing of post types allowed in guardrail run.
 Lap guardrail splices, including terminal connector, in the direction of traffic. Where traffic is temporarily carried in the opposite direction of final configuration, lap rail splices in the direction of permanent traffic.
 Drive the steel soil tubes with an approved driving head. Do not drive steel tubes with wood post in the tube. Backfill and satisfactorily compact around steel tubes placed in drilled holes to prevent tube settlement.
 The soil tubes should not protrude more than 4" above ground (measured along a 5'-0" cord). If necessary grade the site to meet this requirement. When rock is encountered during installation, see Manufacturer's Installation Manual for procedure.
 The cable anchor assembly must be taut. Use a locking device, (vice grips or channel lock pliers) to prevent the cable from twisting when tightening the nuts.
 Apply retroreflective sheeting as shown on the face of the impact head prior to installation. Thoroughly clean and dry steel prior to applying sheeting.
 Galvanize all steel parts after fabrication.
 All work and materials required for installation of this terminal are paid under the bid item "Guardrail End Terminal (MGS-FLEAT)".
 End Terminal (MGS-FLEAT) details shown on this sheet are for "Information Only" and may not be an exact detail. See Manufacturer's Installation Manual (furnished to Engineer) for component details and installation instructions.
 See Standard Drawing RD611A for guardrail post details.



PARTIAL VIEW OF POST 1



DETAIL OF POST #2



DETAIL OF CRT POST

(#3 through #6)

Optional 4'-6" or 5'-0" tube w/soil plate may be used as per the manufacturer's specifications.

NO.	DATE	REVISIONS	BY	APP'D
2	1-29-13	Revised Offset Method, End Term.	S.W.K.	J.O.B.
1	1-24-12	Revised Dimension, End Term.	S.W.K.	J.O.B.

KANSAS DEPARTMENT OF TRANSPORTATION

GUARDRAIL END TERMINAL (MGS-FLEAT) FLARED

RD606E

DESIGNED	5-21-2013	APP'D.	James O. Brewer
DETAILED		QUANTITIES	TRACED
DESIGN CK.	DETAIL CK.	QUAN. CK.	TRACE CK.