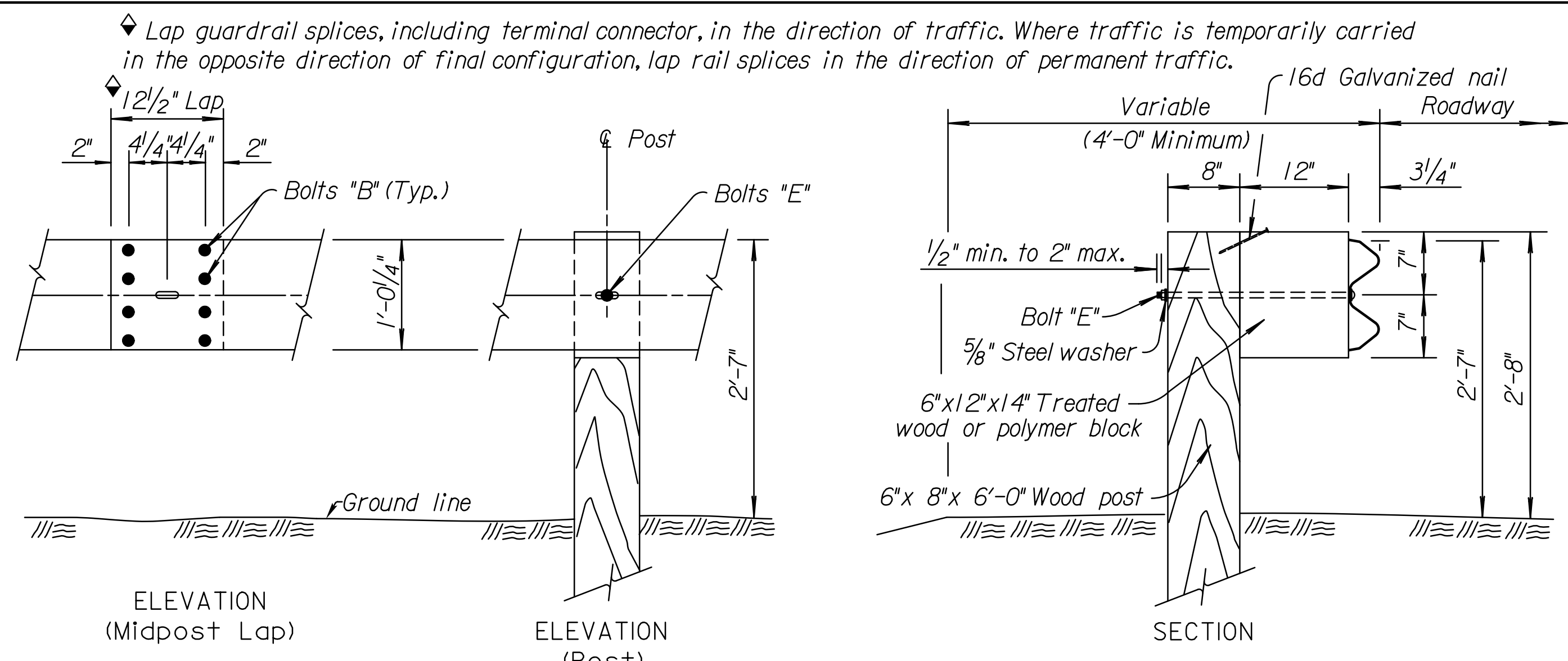
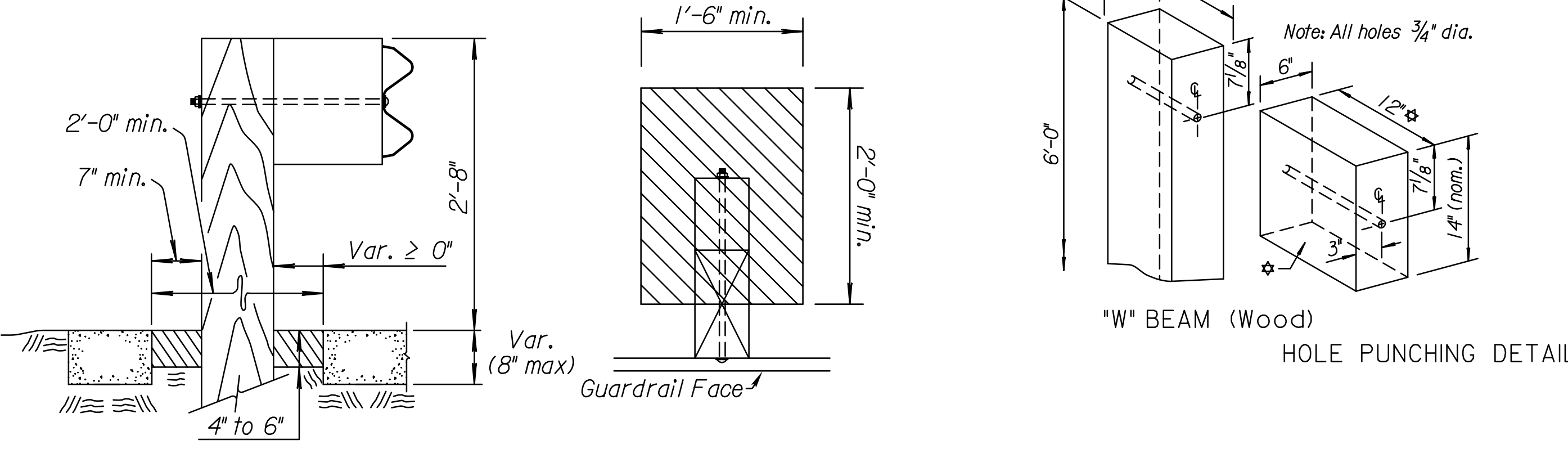


Notes to Designer: For posts installed in pavement thicker than 8" or posts installed in rock formations refer to AASHTO's Roadside Design Guide for details then revise this drawing and all supporting drawings appropriately.

STATE	PROJECT NO.	YEAR	SHEET NO.	TOTAL SHEETS
KANSAS	472-85066	2014	80	388



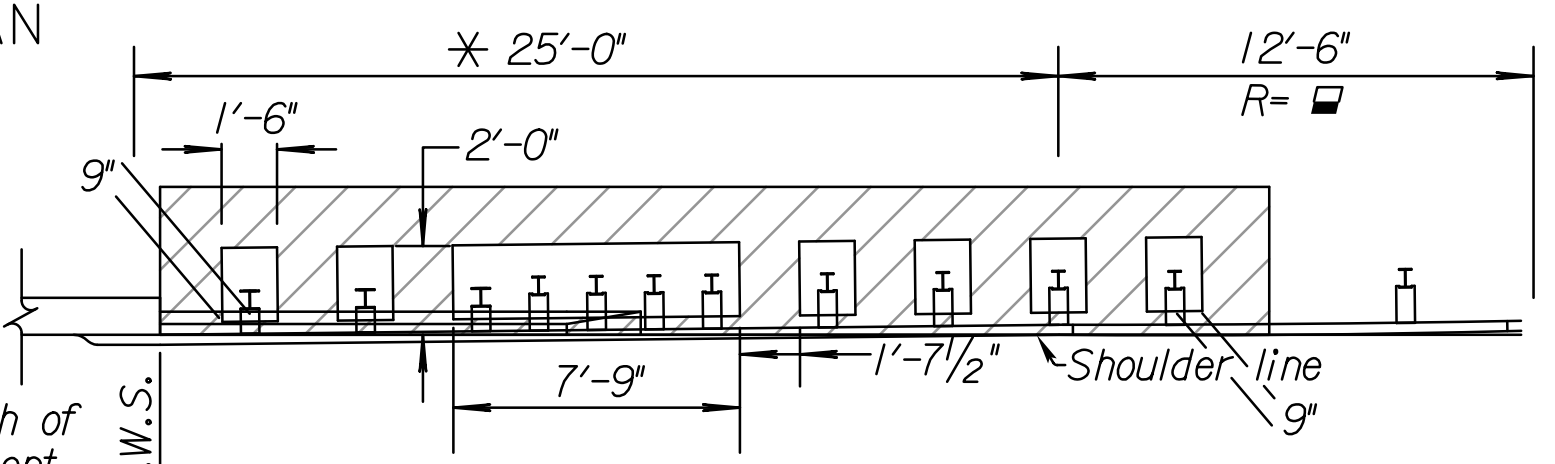
W-BEAM (MGS) POST DETAILS
WOOD POSTS



POSTS IN PAVEMENT

Slurry Grout (Low Strength)
See KDOT's Standard Specifications
Pavement (Concrete or Asphalt)

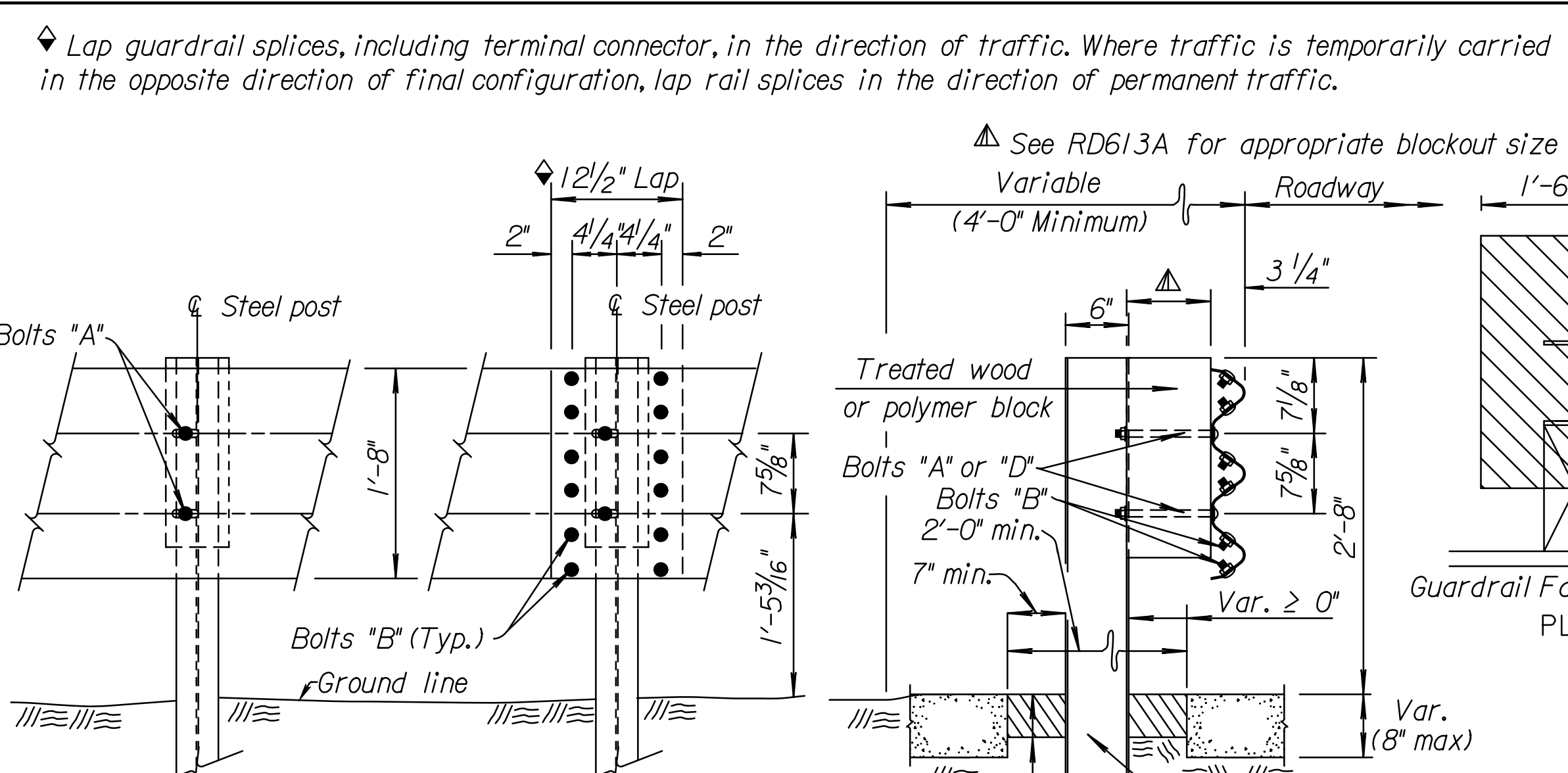
Note: Low Strength Grout must have a 28-day compressive strength of 120 psi or less. All work and materials related to posts in pavement are subsidiary to other guardrail bid items.



POSTS IN PAVEMENT
(Not to Scale)

GENERAL NOTES (Wood Posts)

Give all wood posts and wood blocks a preservative treatment, see standard specifications. Thoroughly saturate all cuts, injuries and bolt holes on wood posts and blocks with preservative. Use only one type of preservative treatment on a project.
Set guardrail posts by digging or by driving. Use post caps to protect the post from crushing during driving operations.
Use only one post/blockout type within MGS Guardrail run, this excludes the guardrail end terminals. For wood/polymer blockout requirements see standard specifications.
Use S4S rectangular posts/blockouts for Thrie Beam/W-Beam installation. See standard specifications for additional information.
Contractor must notify Engineer at the earliest time when a non-removable man-made object (footing, pipe, etc.) is encountered and prevents installation of a full length post.
All dimensions are nominal and are subject to manufacturing tolerances.
Excavation including rock, shale, and other materials for erection of Guardrail is subsidiary to various bid items for which payment is made.



THRIE BEAM POST DETAILS/POSTS IN PAVEMENT



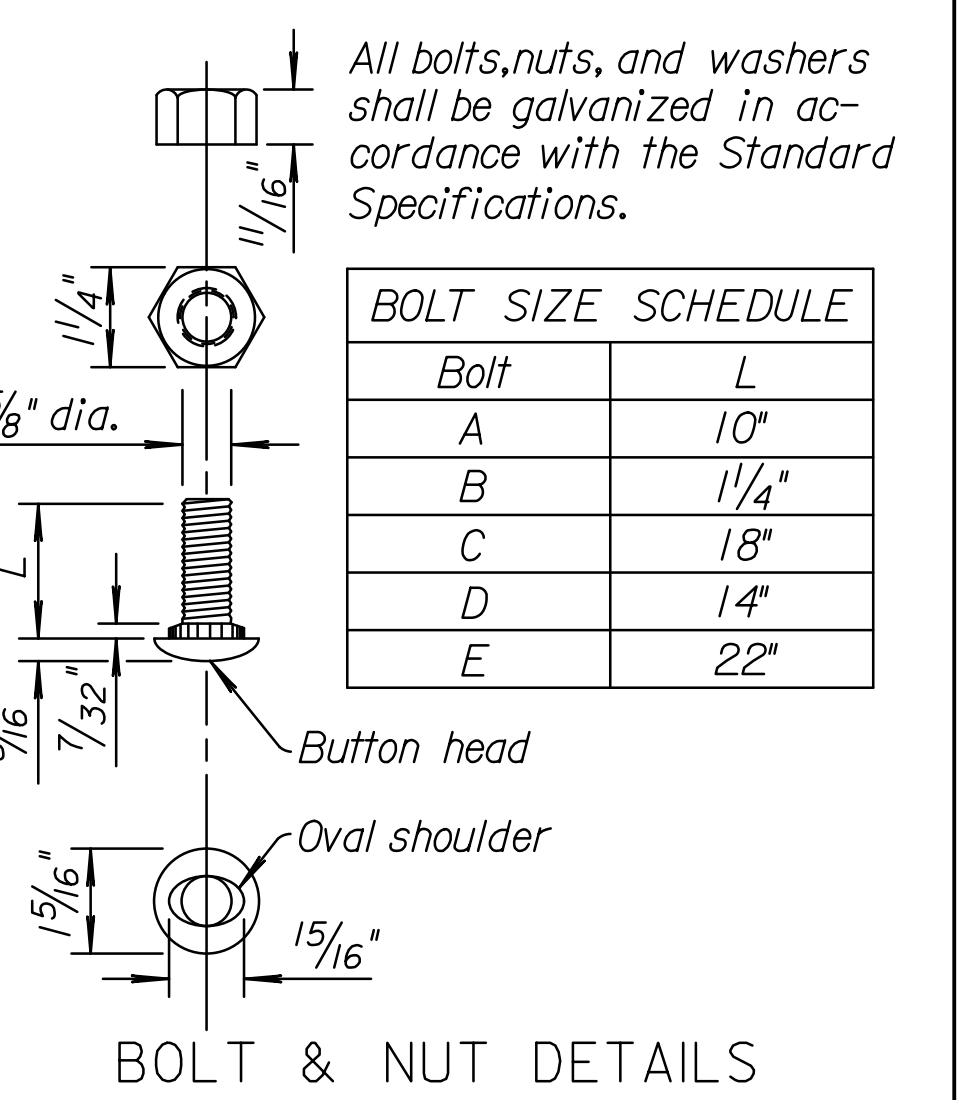
W-BEAM (MGS) POST DETAILS

See Standard Drawing RD613A for Thrie Beam Transition Section Blockout hole pattern.
Non-Metallic (Polymer) or Treated Wood Block

STEEL POSTS

GENERAL NOTES (Steel Posts)

Use grade of steel for steel posts that meets the requirements of the standard specifications.
Hot dip galvanize the posts after fabrication, see standard specifications.
Use only one post/blockout type within MGS Guardrail run, this excludes the guardrail end terminals. For wood/polymer blockout requirements see standard specifications.
Approved polymer blockouts may be substituted for wood blockouts. Only one type of blockout is permitted on each guardrail installation, this excludes the guardrail end terminals.
Set guardrail posts by digging or by driving. Use post caps to protect the post from crushing during driving operations.
Contractor must notify Engineer at the earliest time when a non-removable manmade object (footing, pipe, etc.) is encountered that prevents installation of a full length post.
All dimensions are nominal and are subject to manufacturing tolerances. Excavation including rock, shale, and other materials for erection of Guardrail is subsidiary to various bid items for which payment is made.

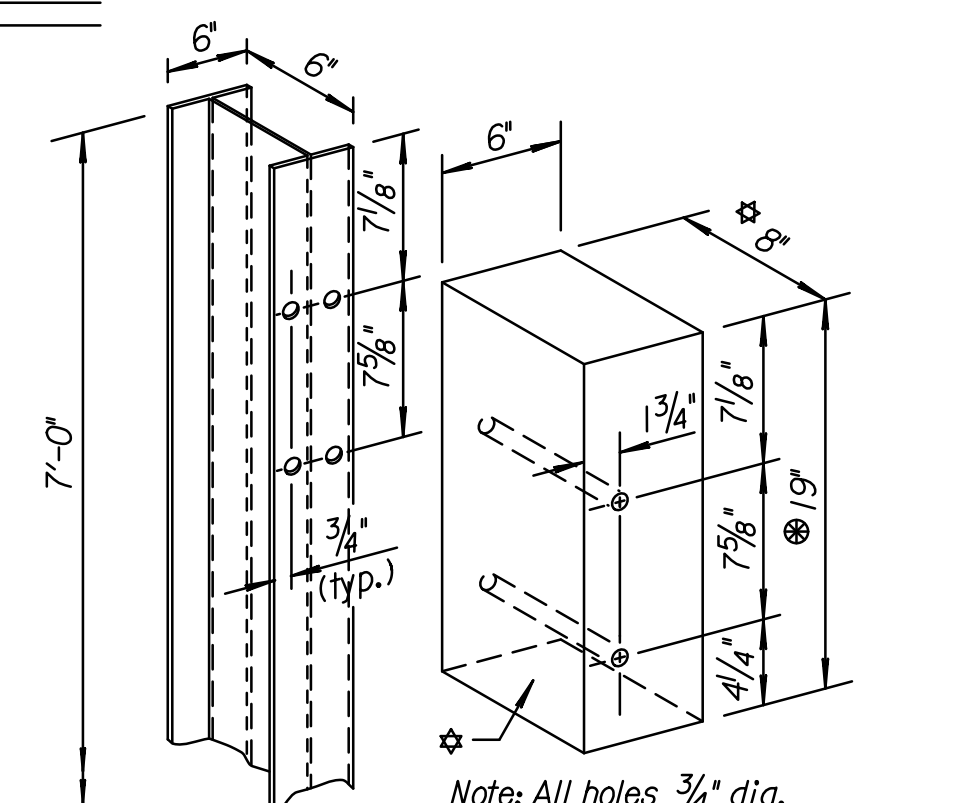


Bolt	L
A	10"
B	1 1/4"
C	18"
D	14"
E	22"

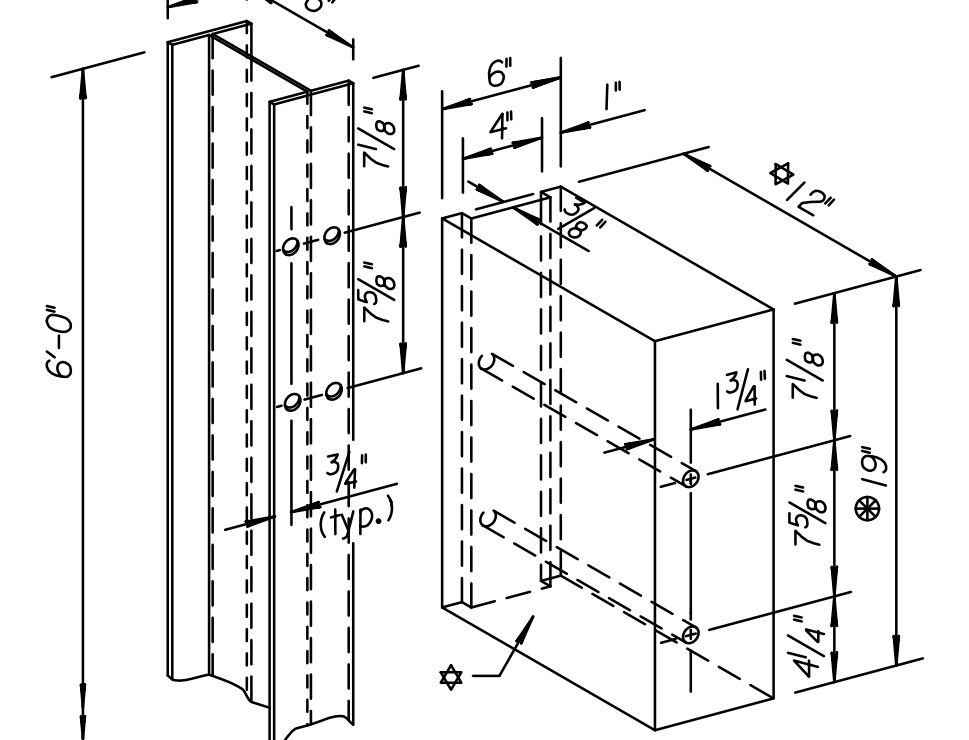
BOLT & NUT DETAILS

Slurry Grout (Low Strength)
See KDOT's Standard Specifications
Pavement (Concrete or Asphalt)

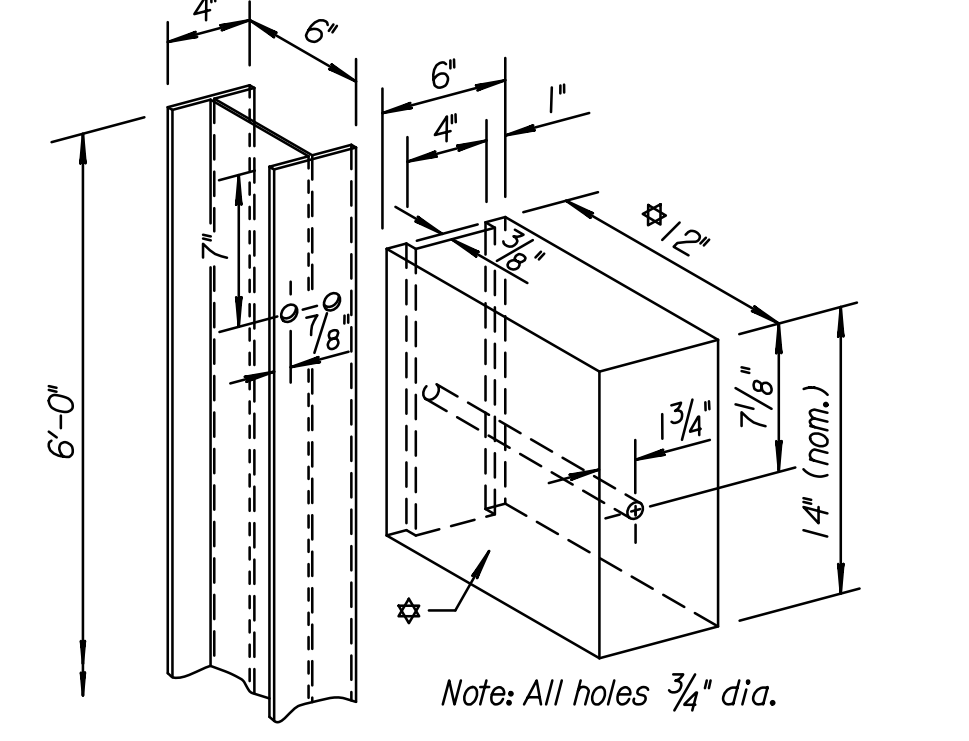
Note: Low Strength Grout must have a 28-day compressive strength of 120 psi or less. All work and materials related to posts in pavement are subsidiary to other guardrail bid items.



THRIE BEAM (Steel)



THRIE BEAM (Steel)



"W" BEAM (Steel)

NO.	DATE	REVISIONS	BY	APP'D
4	11-8-12	Revised Detail, Posts In Pavement	S.W.K.	J.O.B.
3	8-1-12	Revised Note to Designer	S.W.K.	J.O.B.
2	5-24-12	Revised Detail, Posts In Pavement	S.W.K.	J.O.B.
1	12-22-11	Added Detail, Posts In Pavement	S.W.K.	J.O.B.

KANSAS DEPARTMENT OF TRANSPORTATION

GUARDRAIL POST
(MGS) DETAILS

RD611A	1-3-13	APP'D. James O. Brewer
DESIGNED	DETAILED	QUANTITIES
DESIGN CK.	DETAIL CK.	TRACE

Drawn By: cp
Plotted: 30-DEC-2013 13:33
File: I:\2009\09521\Standards\09521-rd611a.dgn