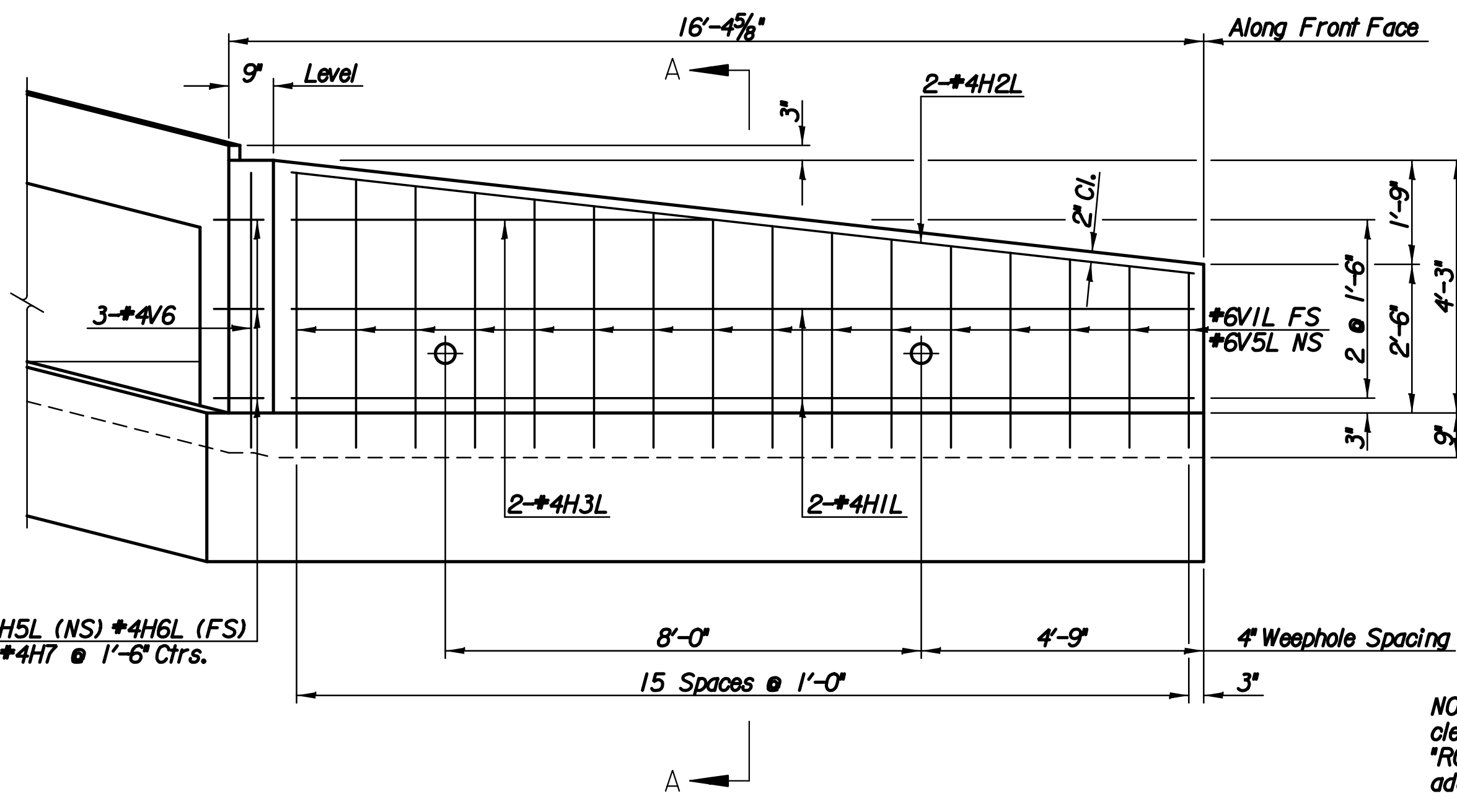


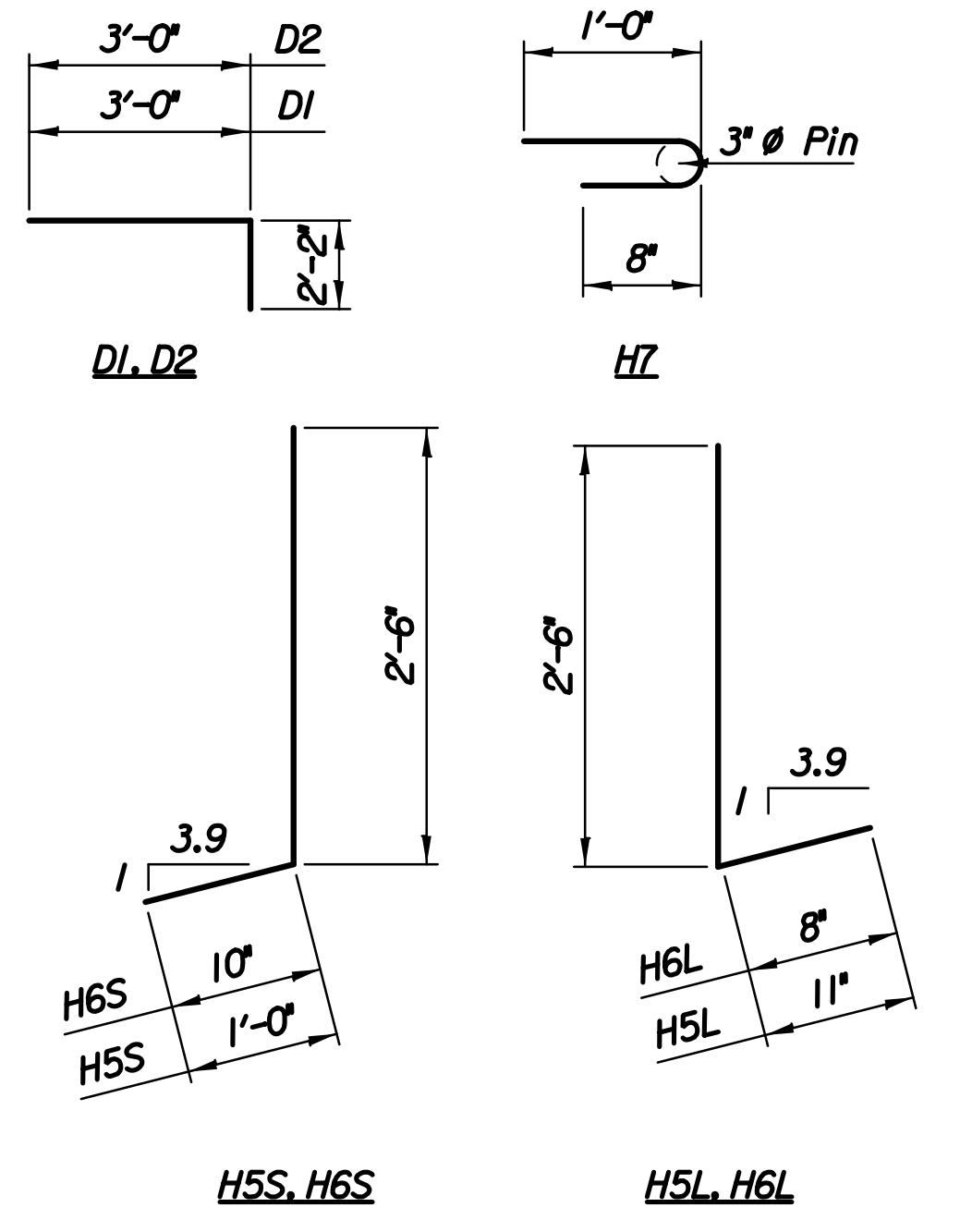
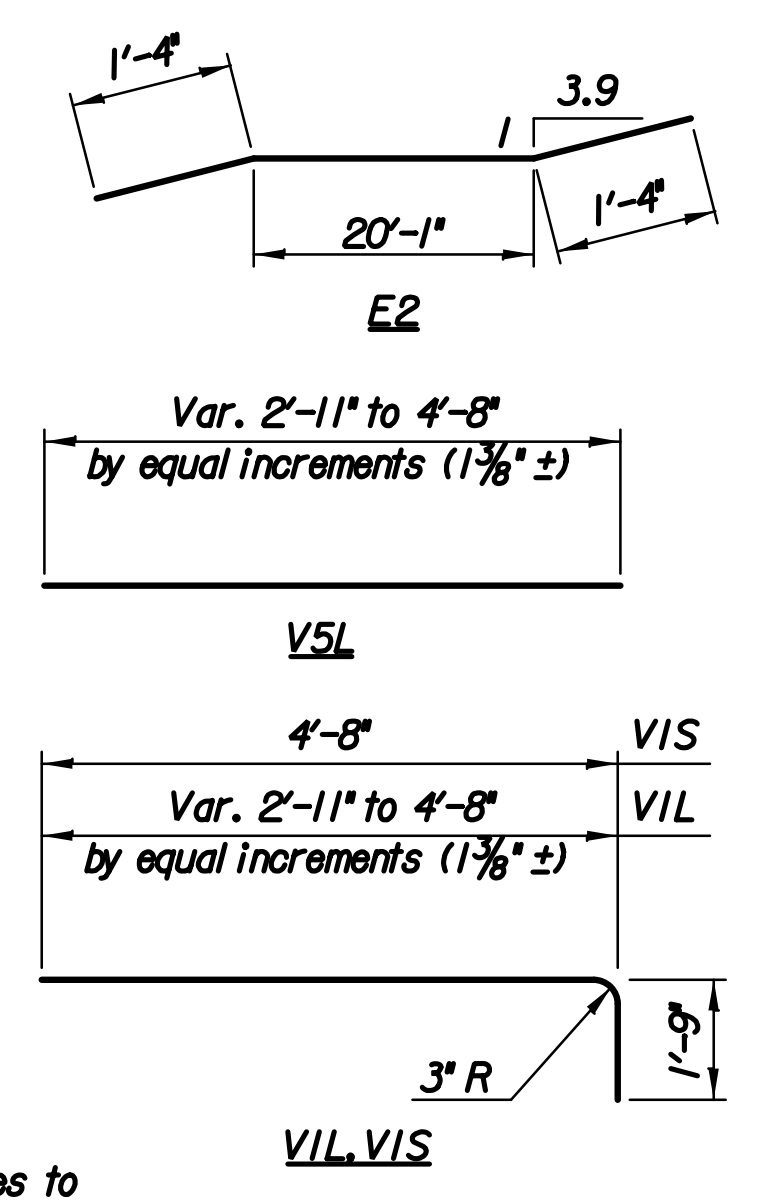
**ELEVATION**

**LEGEND**  
 EF = Each Face  
 NS = Near Side  
 FS = Far Side  
 CJ = Const. Joint

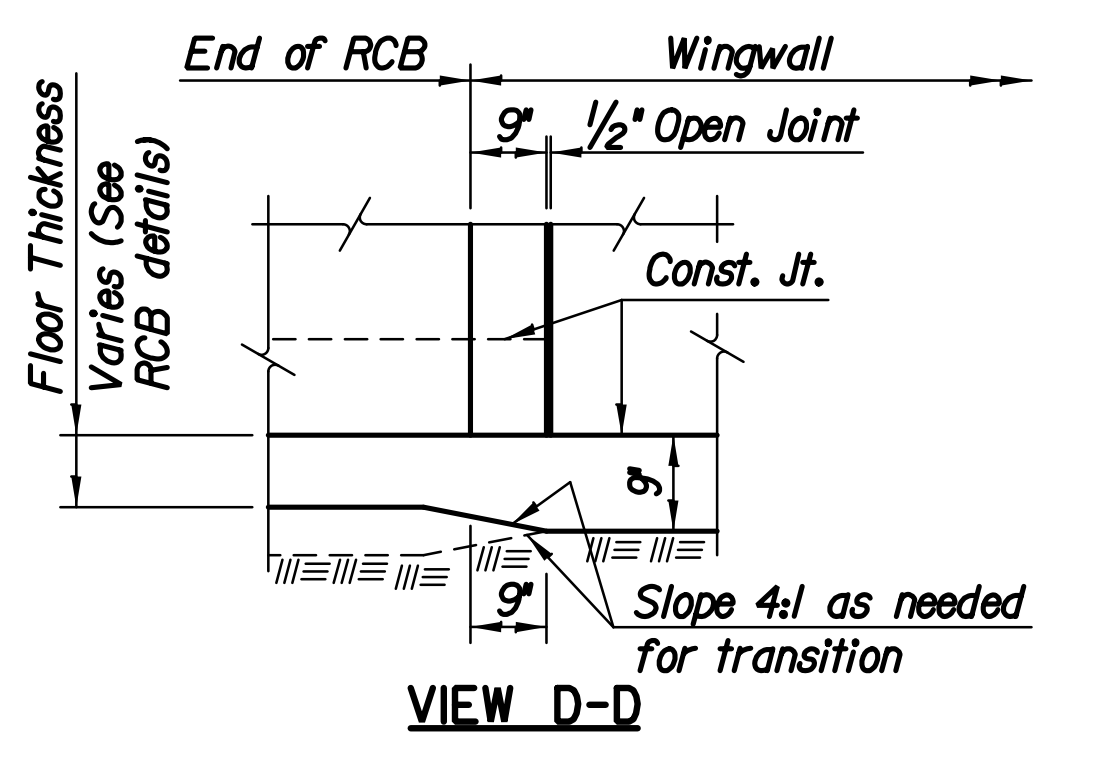


**ELEVATION**

NOTE: Space weepholes to clear reinforcing steel. See "RCB Aux. Details" sheet for additional weephole details.

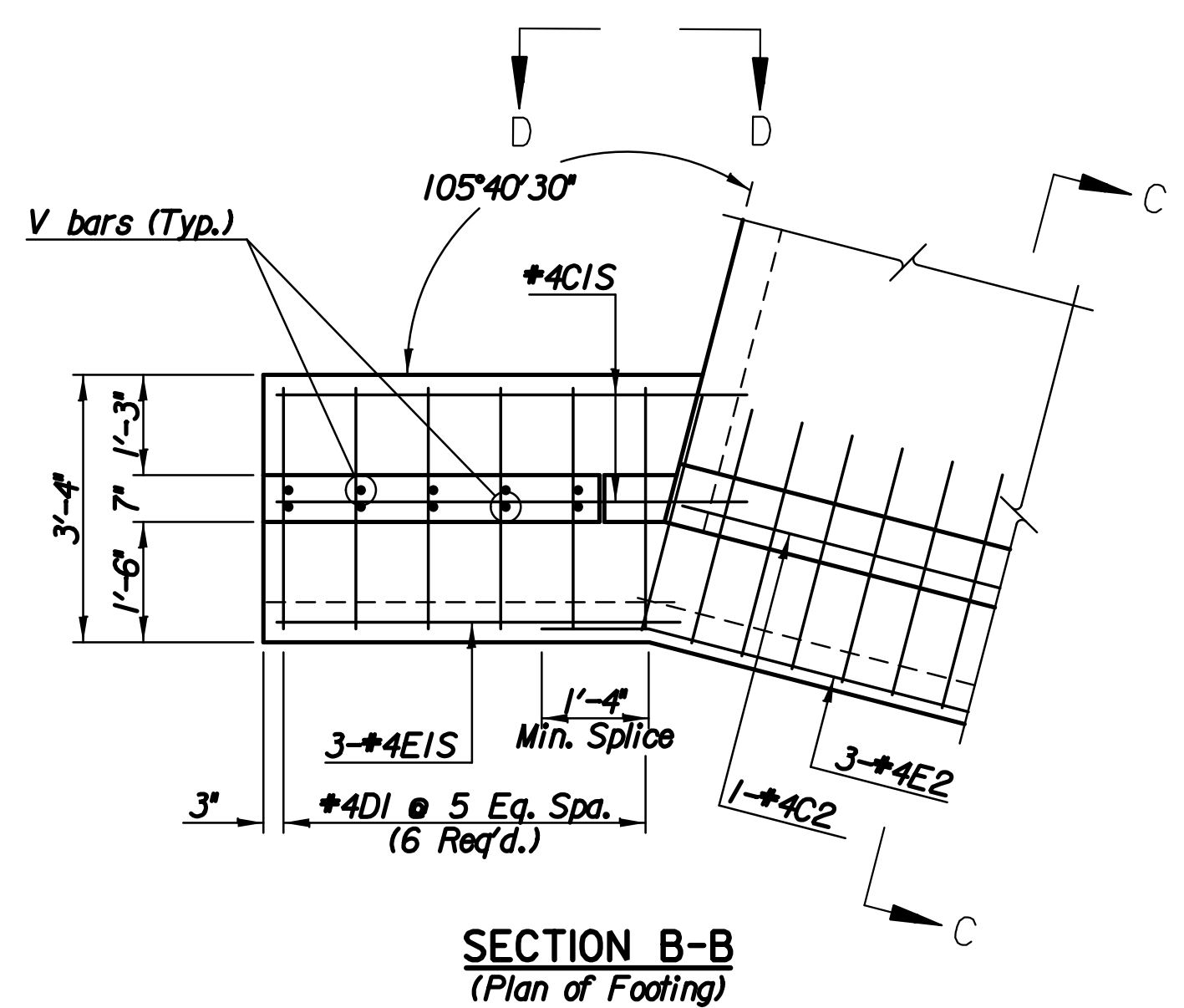


**BENDING DIAGRAM**  
 (All dimensions are out to out of bars.)

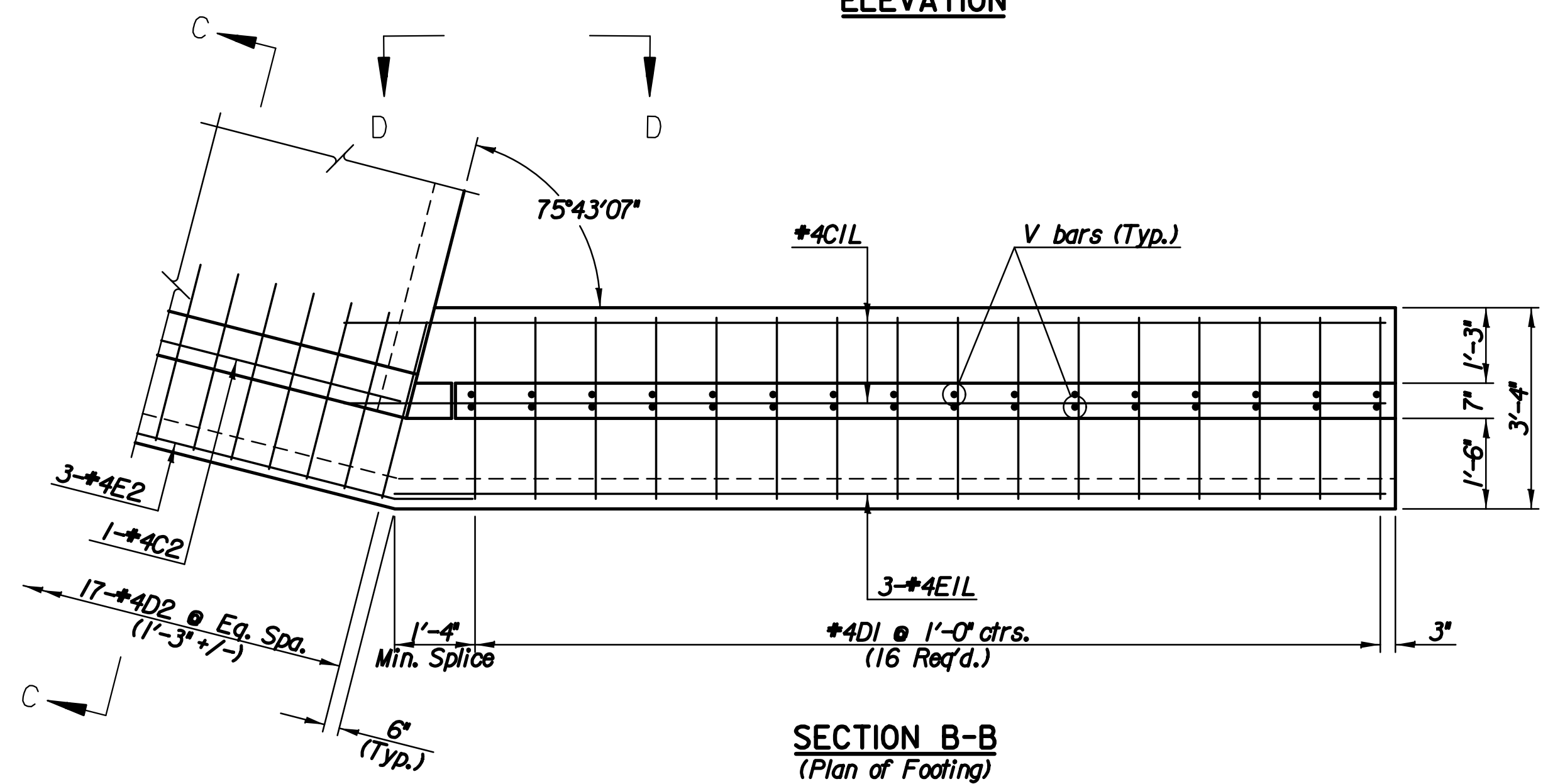


Quantities listed below are included in the Summary of Quantities shown on the RCB details.

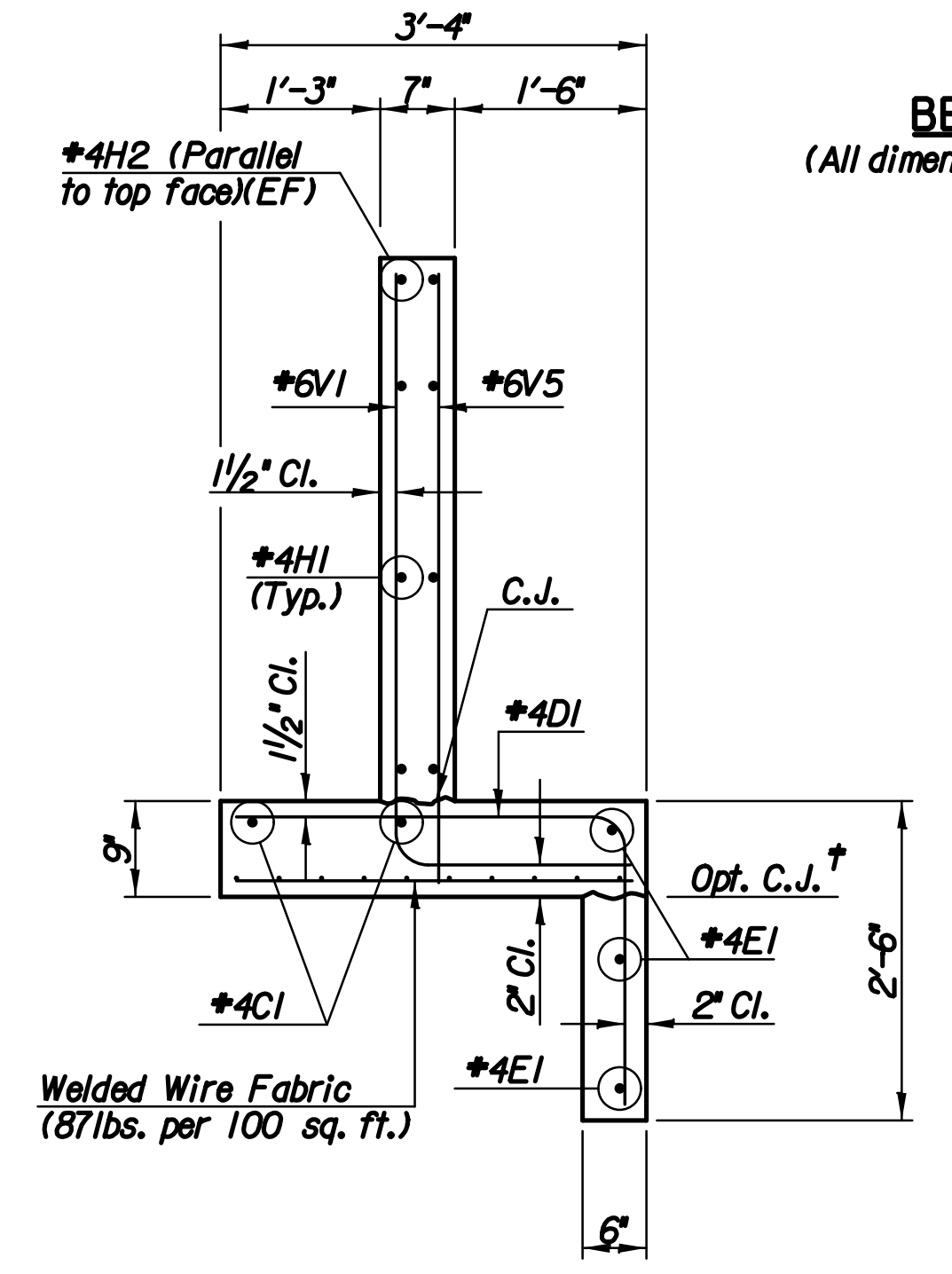
SUMMARY OF QUANTITIES		
Item	Quantity	Unit
Concrete (Grade 4.0)	5.83	C.Y.
Reinforcing Steel (Grade 60)	719	Lbs.
Welded Wire Fabric	63	Lbs.
Foundation Stabilization	2.35	C.Y.
Granular Backfill	7.96	C.Y.
Filter Fabric (subsidiary)	12.39	S.Y.



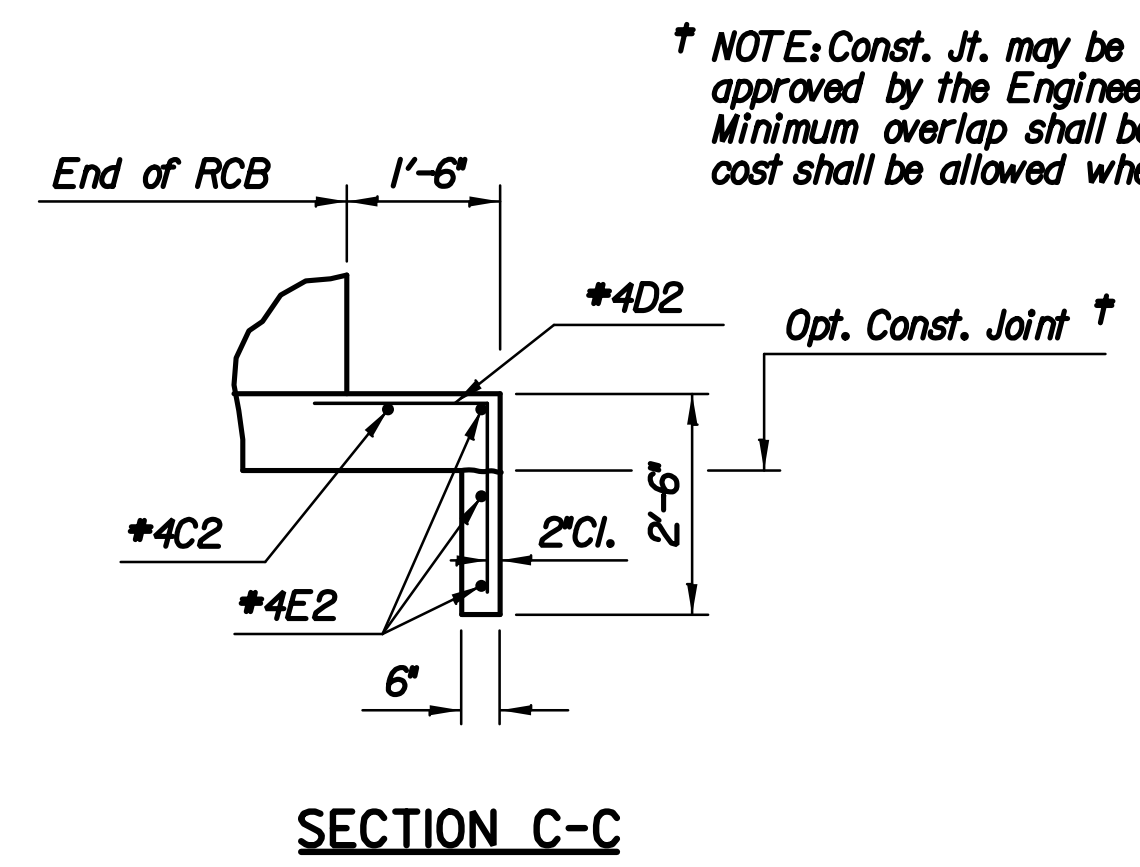
**SECTION B-B**  
 (Plan of Footing)



**SECTION B-B**  
 (Plan of Footing)

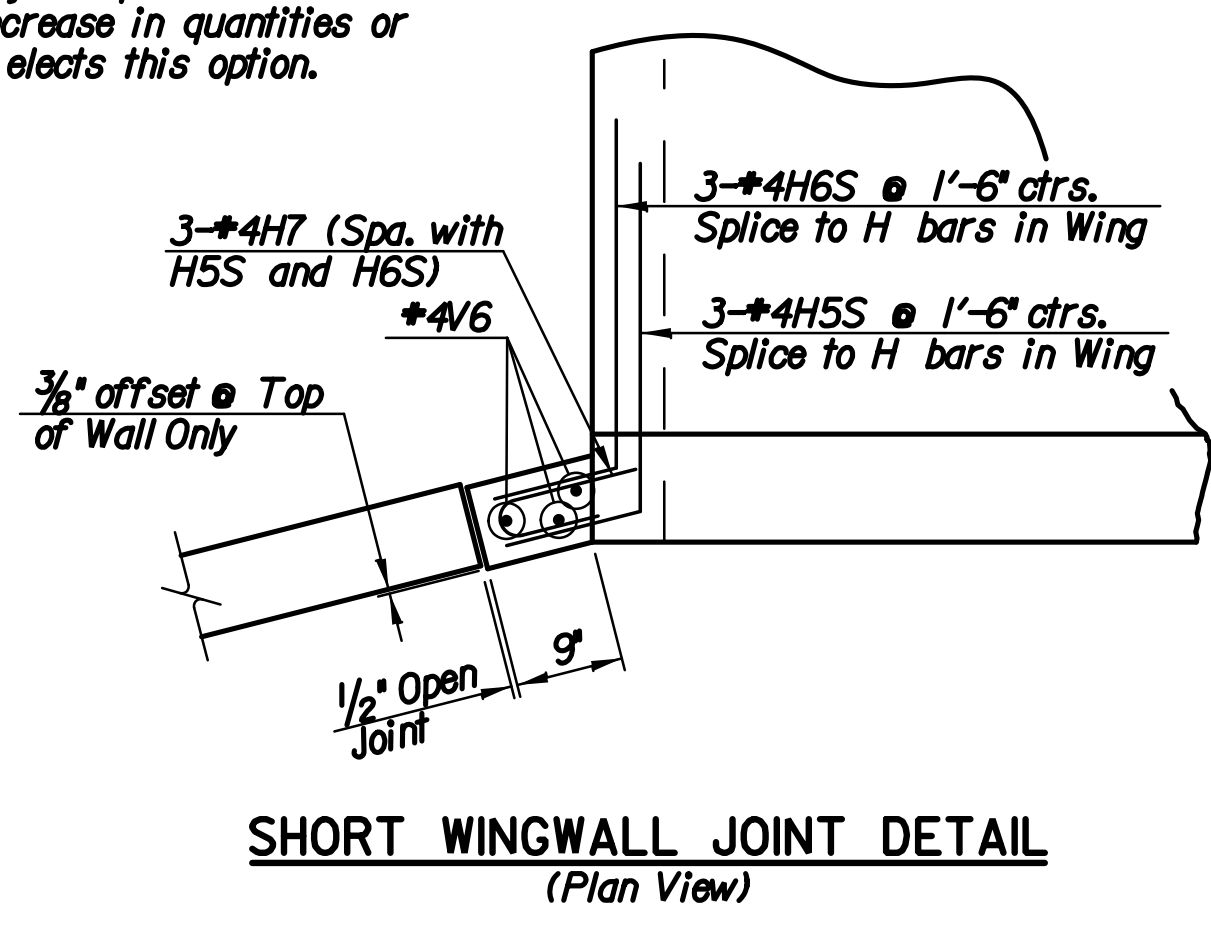


**SECTION A-A**

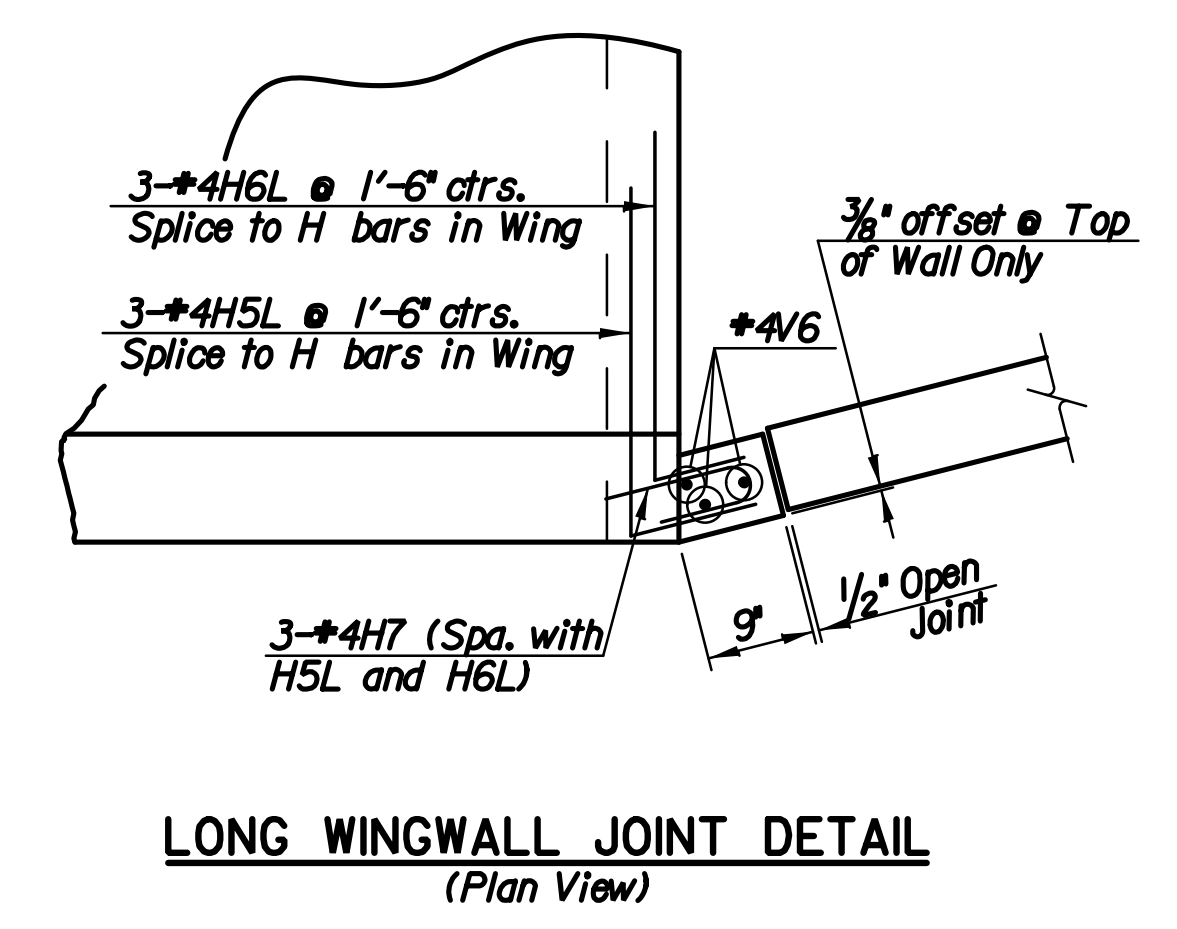


**SECTION C-C**

† NOTE: Const. Jt. may be used at Contractor's option when approved by the Engineer. D bars may be spliced thus: Minimum overlap shall be 1'-3". No increase in quantities or cost shall be allowed when Contractor elects this option.



**SHORT WINGWALL JOINT DETAIL**  
 (Plan View)



**LONG WINGWALL JOINT DETAIL**  
 (Plan View)

Reinforcing Bar List is for both wings

Mark	CIL	CIS	C2	Δ DI	Δ D2	EIL	EIS	Δ E2	HIL	HIS	H2L	H2S	H3L	Δ H5L	Δ H5S	Δ H6L	Δ H6S	Δ H7	Δ VIL	Δ VIS	Δ V5L	V5S	V6
Size	#4	#4	#4	#4	#4	#4	#4	#4	#4	#4	#4	#4	#4	#4	#4	#4	#4	#4	#6	#6	#6	#6	#4
No.	2	2	1	22	17	3	3	3	4	6	2	2	2	3	3	3	3	6	16	5	16	5	6
Length	17'-3"	5'-10"	19'-10"	5'-2"	5'-2"	16'-5"	5'-0"	22'-9"	15'-2"	3'-11"	15'-3"	3'-11"	7'-1"	3'-5"	3'-6"	3'-2"	3'-4"	1'-10"	Varies	6'-5"	Varies	4'-8"	4'-6"

Δ See Bending Diagram

Plotted By: msn Date: 12/30/2013 3:18:08 PM  
 FILE: I:\2009\0952\10\Office Check 03-2012\Bridg\RCB\09521-BR-3-6x3x20(Wing).dgn

No.	Revisions	By	Date
SERIAL NO. (584) RAMP W-NS STA. 461+10.09			
<b>CUSTOM WINGWALLS</b>			
<b>3 ft Rise (0°SKEW)</b>			
PROJECT NO. 472-85066		SEDGWICK COUNTY	
<b>PEC</b> PROFESSIONAL ENGINEERING CONSULTANTS, P.A. 303 SOUTH TOPEKA WICHITA, KS 67202 316-262-2691 www.pec1.com			
Designed by	C.W.P.J.	Checked by	R.A.S.
Drawn by	C.W.P.J.	Date	11/2013 Job No. 09521