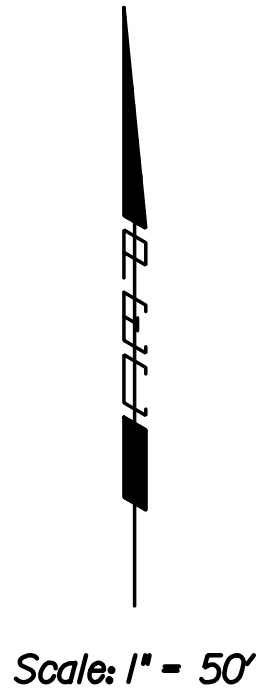


STATE	PROJECT NO.	YEAR	SHEET NO.	TOTAL SHEETS
KANSAS	472-85066	2014	100	388

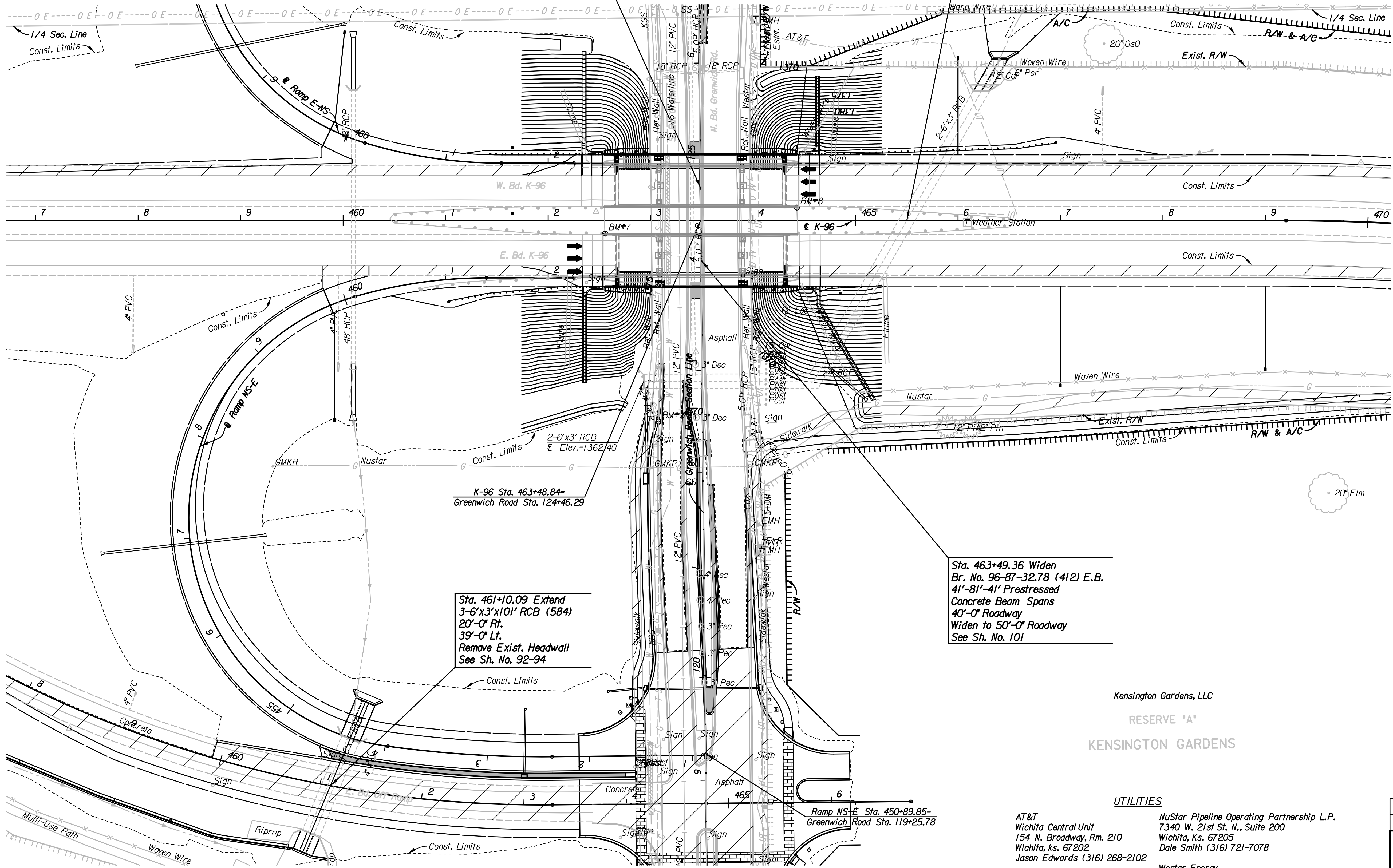


Sta. 463+48.72 Widen
Br. No. 96-87-32.79 (411) W.B.
41'-81'-41' Prestressed
Concrete Beam Spans
40'-0" Roadway
Widen to 50'-0" Roadway
See Sh. No. 102

Sta. 465+50 Extend
2'-6"x3'x493'-6" RCB (559)
36'-0" Lt.
with Apron
(Skew 30° Rt.)
Remove Exist. Headwall / Soil Saver
See Sh. No. 90-91

Sta. 461+10.09 Extend
3'-6"x3'x101' RCB (584)
20'-0" Rt.
39'-0" Lt.
Remove Exist. Headwall
See Sh. No. 92-94

Sta. 463+49.36 Widen
Br. No. 96-87-32.78 (412) E.B.
41'-81'-41' Prestressed
Concrete Beam Spans
40'-0" Roadway
Widen to 50'-0" Roadway
See Sh. No. 101



Kensington Gardens, LLC
RESERVE "A"
KENSINGTON GARDENS

UTILITIES

Power	Westar Energy
Telephone	AT&T
Cable TV	Cox Communications
Gas	Kansas Gas Service
Gas	NuStar Pipeline Operating Partnership L.P.
Water	Wichita Water and Sanitary Sewer
Sanitary Sewer	Wichita Water and Sanitary Sewer

- UTILITIES
- AT&T
Wichita Central Unit
154 N. Broadway, Rm. 210
Wichita, ks. 67202
Jason Edwards (316) 268-2102
 - Cox Communications
901 George Washington Blvd.
Wichita, ks. 67211
Marc Henderson (316) 260-7745
 - Kansas Gas Service
1021 E. 26th St. N.
Wichita, ks. 67219
Jim Coe (316) 832-3126
 - NuStar Pipeline Operating Partnership L.P.
7340 W. 21st St. N., Suite 200
Wichita, ks. 67205
Dale Smith (316) 721-7078
 - Westar Energy
1900 E. Central (3rd Floor)
Wichita, ks. 67201
Jacquelin Rolfe (316) 261-6552
 - Wichita Water Utilities
455 N. Main (8th Floor - City Hall)
Wichita, ks. 67202
LaDonna Lawrenz (316) 268-4329 (San. Sewer)
Greg Lolley (316) 268-4555 (Water)

- W 1/4 Cor. Sec. 3, T27s, R2E
E Greenwich Rd. Sta. 126+44.84
Found 3/4" Iron Pipe in thimble in grass median
1. Chiseled **W side median on top curb 15.41' WNW
2. Chiseled **E side median on top curb 6.08' ENE
3. Chiseled **E face curb inlet 67.16' SW
4. Chiseled **W face curb inlet 67.85' SE

- BM*7-Set Chis. **W end N Hub Guard
E. Bd. K-96 Bridge over Greenwich
12.7' Rt. K-96 Sta. 462+55.6 Elev.=1395.59
- BM*8-Set Chis. **E end S Hub Guard
W. Bd. K-96 Bridge over Greenwich
12.7' Lt. K-96 Sta. 464+42.7 Elev.=1395.82
- BM*9-Set Chis. **Ctr. W side SWS Median Inlet
2.6' Lt. K-96 Sta. 470+49.6 Elev.=1387.02

Plotted By: men Date: 12/30/2013 3:48:12 PM
FILE: I:\2009\09521\Office Check 03-2012\Bridge 09521-BR-Contour Map.dgn

No.	Revisions	By	Date
1	BR. NO. 96-87-32.78 (412) E.B.		STA. 463+49.36
2	BR. NO. 96-87-32.79 (411) W.B.		STA. 463+48.72

CONTOUR MAP
K-96 OVER GREENWICH ROAD
PROJECT NO. 472-85066 SEDGWICK COUNTY

Professional Engineering Consultants, P.A.
303 S. TOPEKA • WICHITA, KANSAS 67202
316-262-2691 • FAX 316-262-3003

Designed by	C.W.P.J.	Checked by	M.S.N.
Drawn by	C.W.P.J.	Date	Jan. 2014
		Job No.	09521