

STATE	PROJECT NO.	YEAR	SHEET NO.	TOTAL SHEETS
KANSAS	472-85066	2014	108	388

GENERAL NOTES

ABUTMENT STRIP DRAIN: The Bridge Contractor shall excavate to the limits shown on the Bridge Excavation sheet, grade the bottom of the backfill area, place the strip drain, and place the perforated pipe, the outlet pipe, couple to the existing CMP, and the backfill.

BRIDGE BACKWALL PROTECTION SYSTEM: Apply a Bridge Backwall Protective System to the approach side of the abutments and the wings in accordance with KDOT Specifications and the manufacturer's recommendations. Cover the abutments and wings to the limits shown on the details. Prior to backfilling, repair any damage done to the system at no charge to the state.

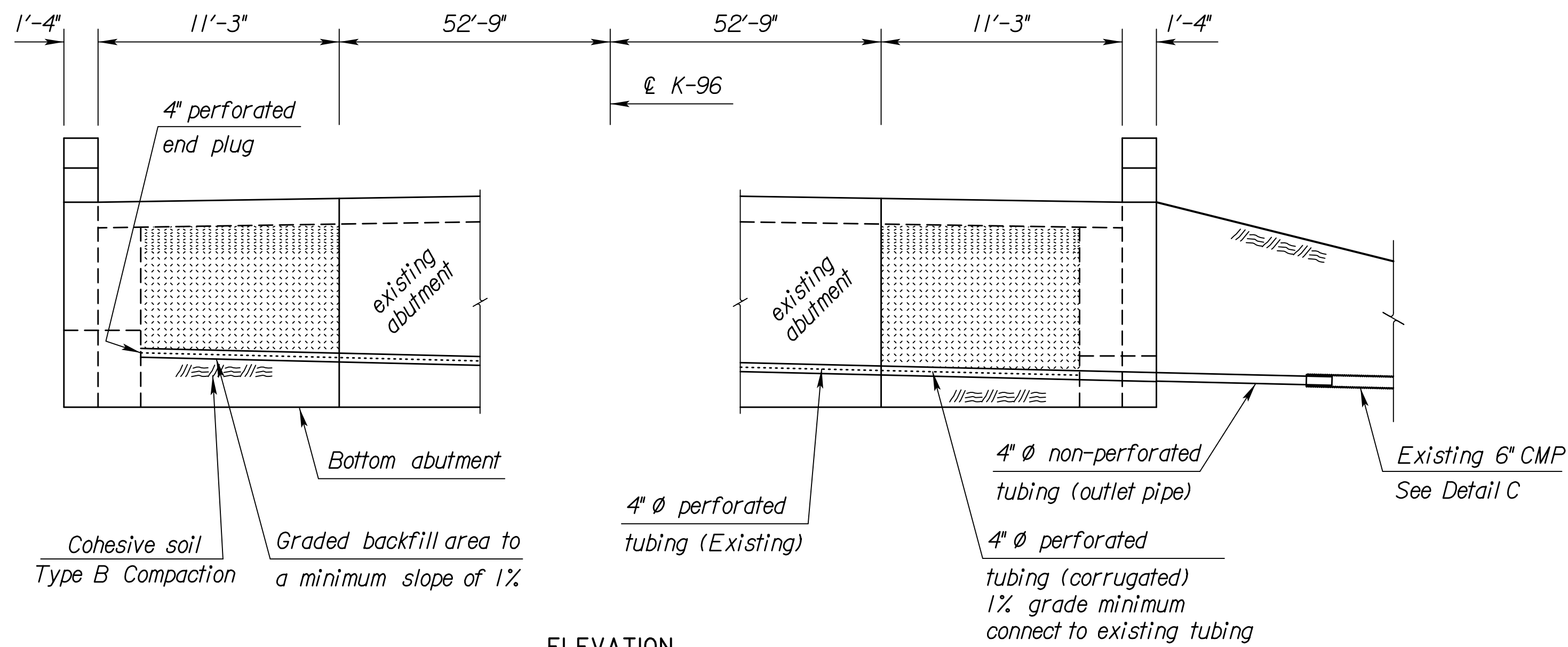
Place perforated pipe next to the strip drain. Use non-perforated pipe outside the limits of the strip drain. Enclose the perforated pipe with the extension of the filter fabric.

Compact the abutment backfill. See the KDOT Specifications.

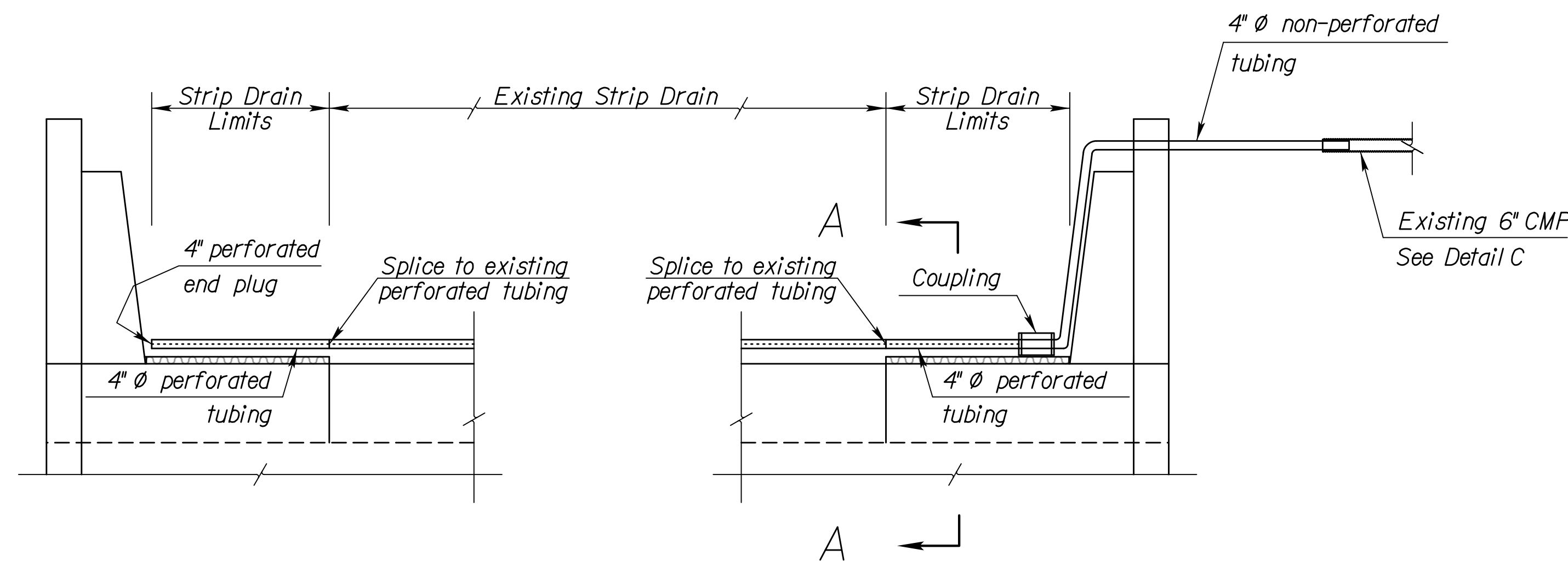
Perforated pipe and non-perforated outlet pipe shall be corrugated polyethylene tubing conforming to the KDOT Specifications. Splice new perforated pipe to existing perforated pipe.

Seal the joint between the outlet pipe and the existing CMP end section with a joint sealer.

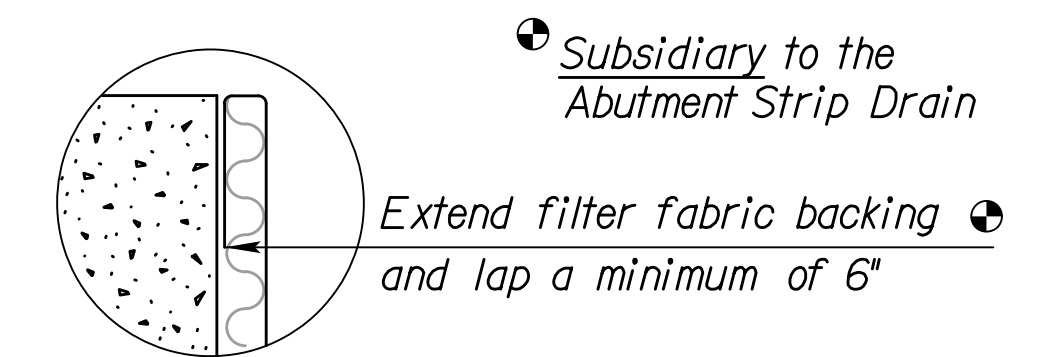
Grade the bottom surface of the excavated area to drain. Backfill this area with a cohesive type soil. The soil should be a silty clay or clay under the Kansas Classification System with a minimum plasticity index of 13. Compact the material to Type B standards.



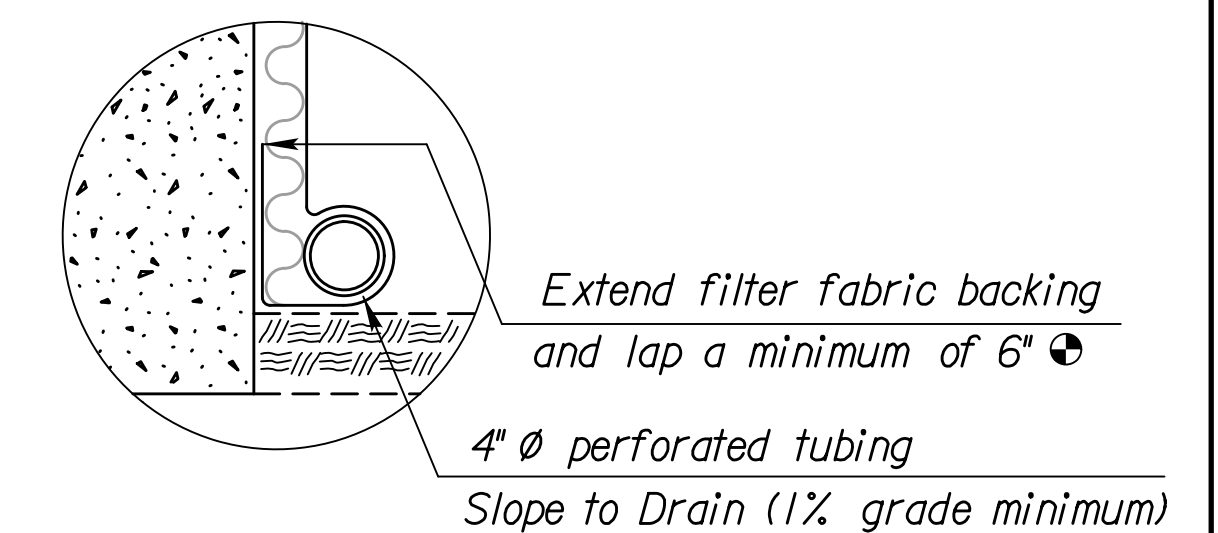
ELEVATION



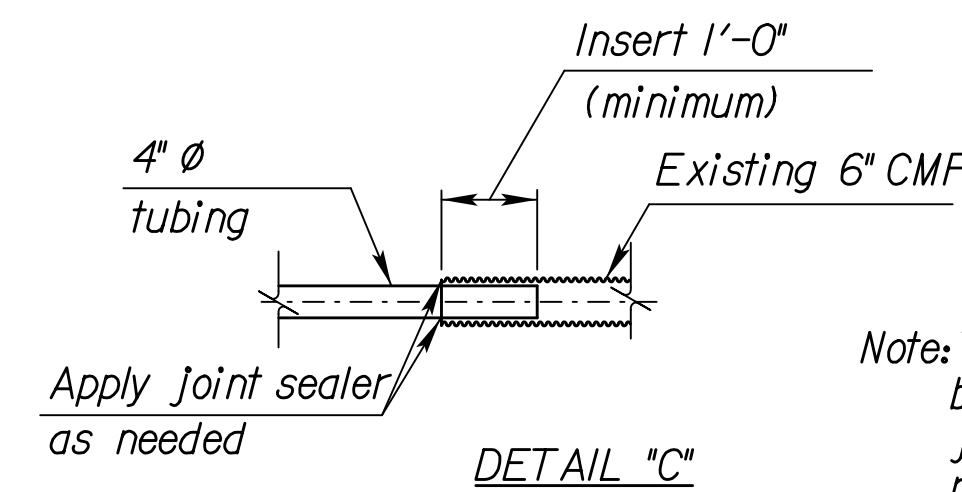
PLAN



DETAIL A

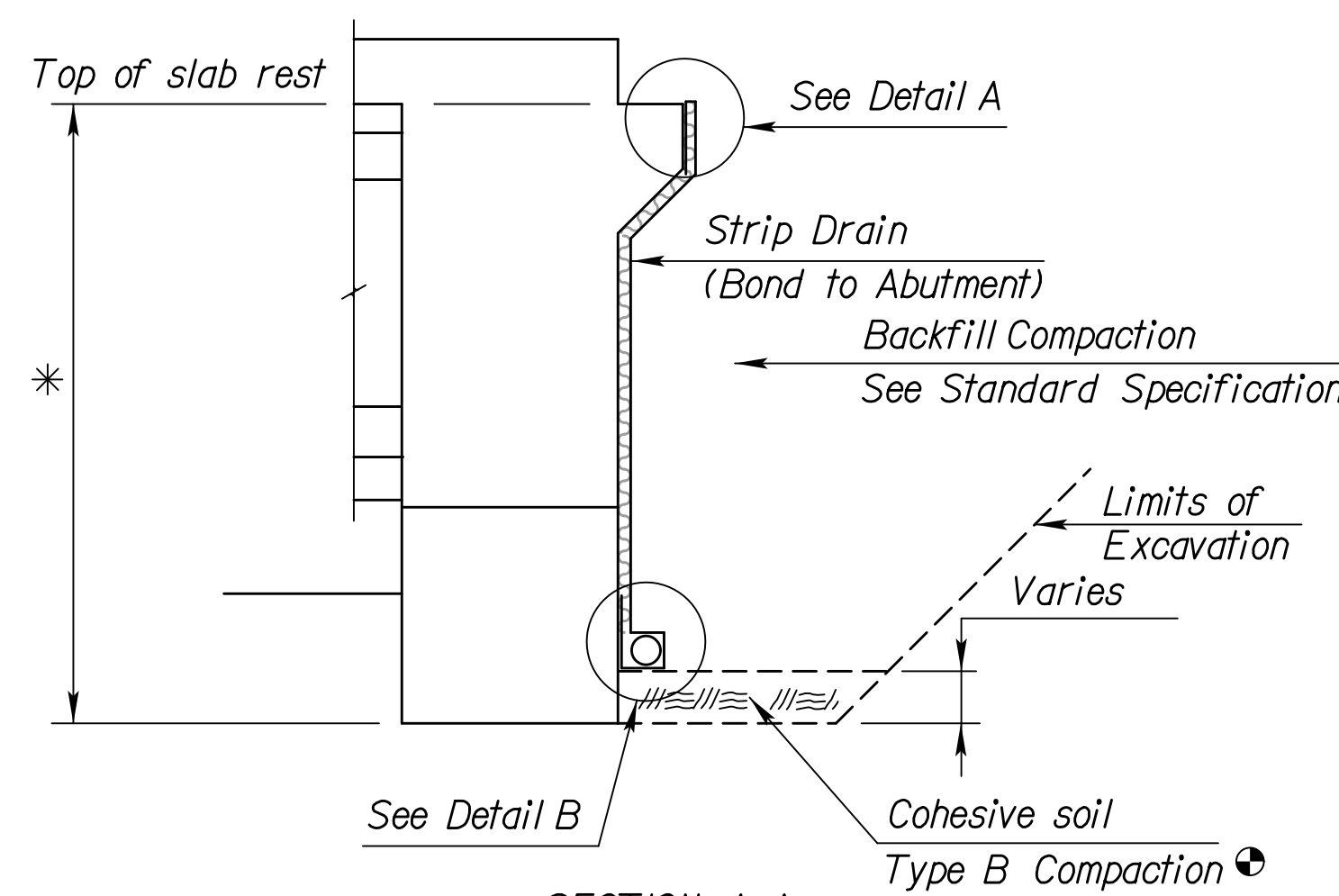


DETAIL B



DETAIL "C"

Note: The 1'-0" lap and joint sealer may be replaced by a reducing coupler at the junction of the CMP and the 4" round tubing.



SECTION A-A

* Limits of Bridge Backwall Protection System (by Bridge Contractor)

SUMMARY OF QUANTITIES (Br. No. 32.79 (411) W.B.)	
Abutment Strip Drain	16.6 Sq. Yds.
Bridge Backwall Protection System	18.6 Sq. Yds.
Items subsidiary to Strip Drain	
4" Ø Perforated Pipe	24 Lin. Ft.
4" Ø Outlet Pipe	0 Lin. Ft.
6" Ø CMP	- Lin. Ft.
Guide Post	- Ea.

SUMMARY OF QUANTITIES (Br. No. 32.78 (412) E.B.)	
Abutment Strip Drain	17.4 Sq. Yds.
Bridge Backwall Protection System	18.6 Sq. Yds.
Items subsidiary to Strip Drain	
4" Ø Perforated Pipe	24 Lin. Ft.
4" Ø Outlet Pipe	40 Lin. Ft.
6" Ø CMP	- Lin. Ft.
Guide Post	- Ea.

NO.	DATE	REVISIONS	BY	APP'D
3	7/14/08	Change Type 'C' Compaction to 'B'	JPJ	KFH
2	4-01-04	Current release		
1				

KANSAS DEPARTMENT OF TRANSPORTATION
 Br. No. 96-87-32.78 (412) E.B. Sta. 463+49.36
 Br. No. 96-87-32.79 (411) W.B. Sta. 463+48.72

ABUTMENT STRIP DRAIN
 K-96 OVER GREENWICH ROAD
 Proj. No. 472-85066 Sedgwick Co.

SHEET NO.	OF	DATE	APP'D
DESIGNED		DETAILED	QUANTITIES
DESIGN CK.		DETAIL CK.	CADD CK.

Std. Base File: br130.dgn
 Plotted By: msn
 File: I:\2009\09521\Office Check 03-2012\Bridges\Standards\09521-BR-br102a.dgn
 Plot Date: 12/30/2013