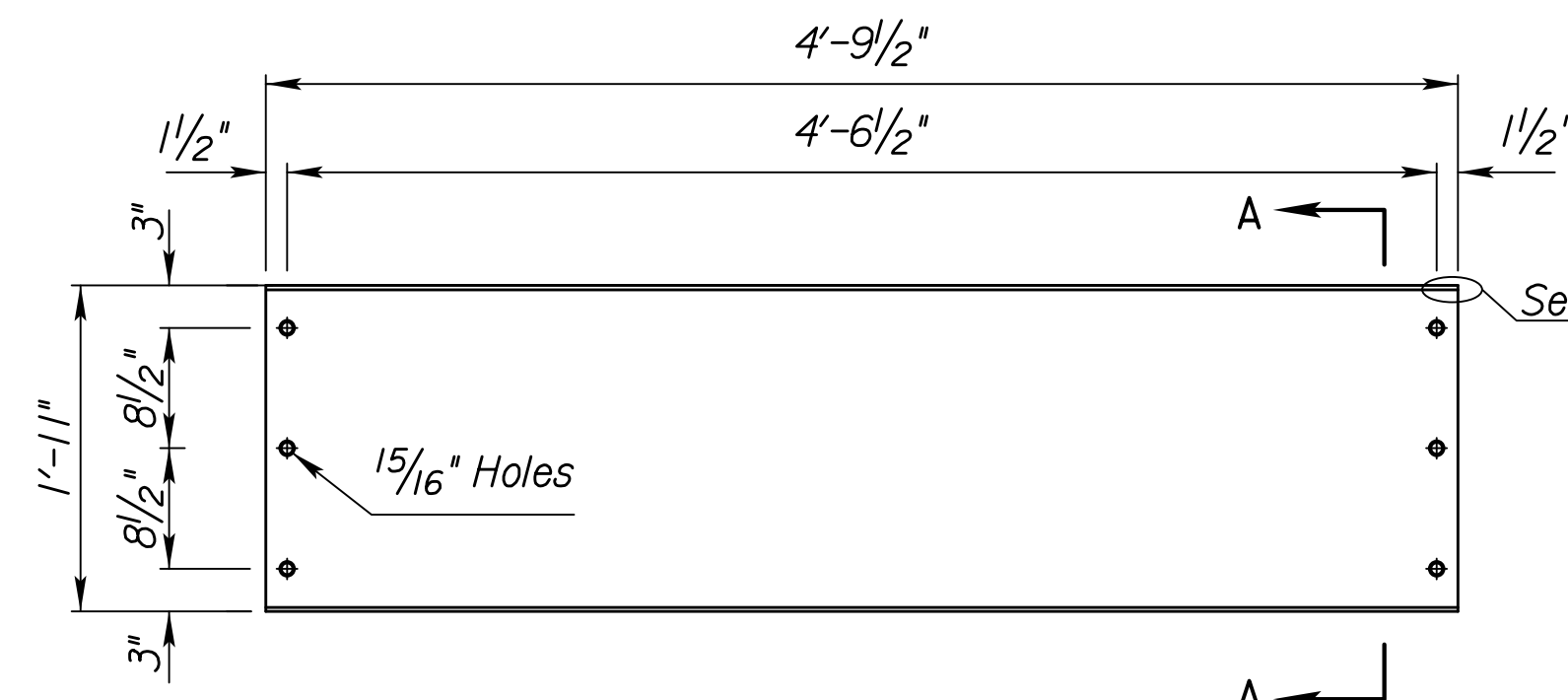
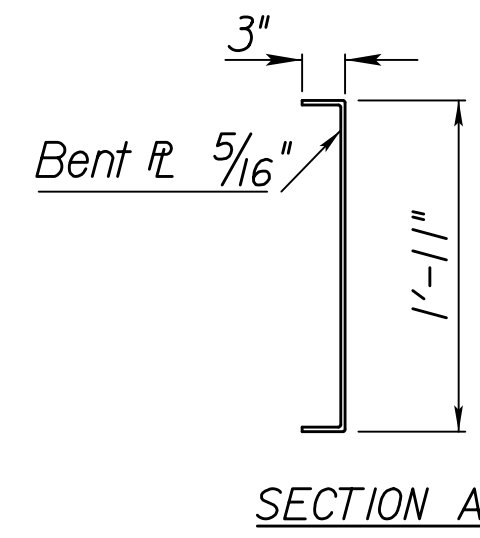


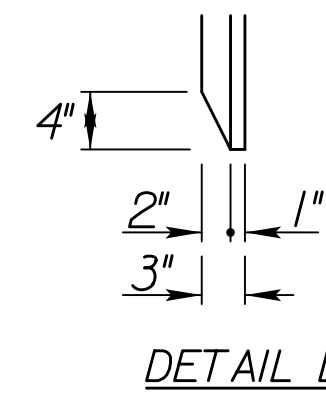
STATE	PROJECT NO.	YEAR	SHEET NO.	TOTAL SHEETS
KANSAS	472-85066	2014	114	388



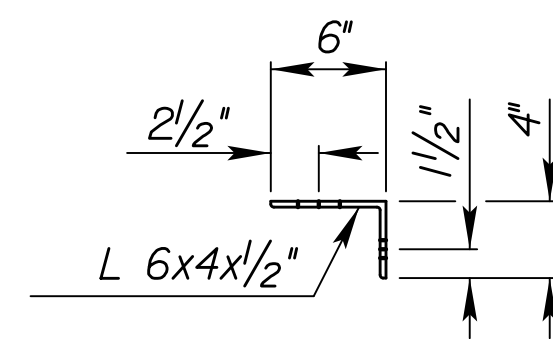
PERMANENT DIAPHRAGM
(or equivalent)



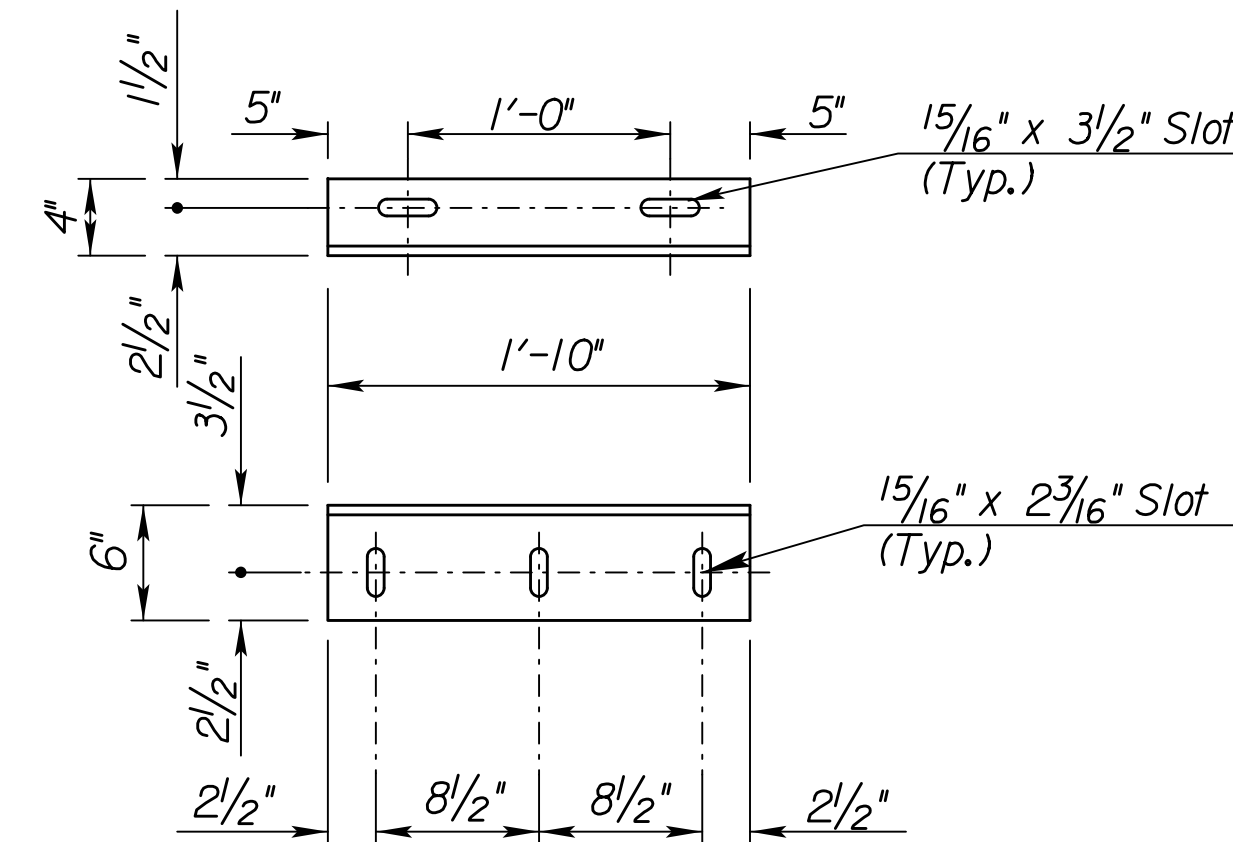
SECTION A



DETAIL D



TYPICAL SECTION

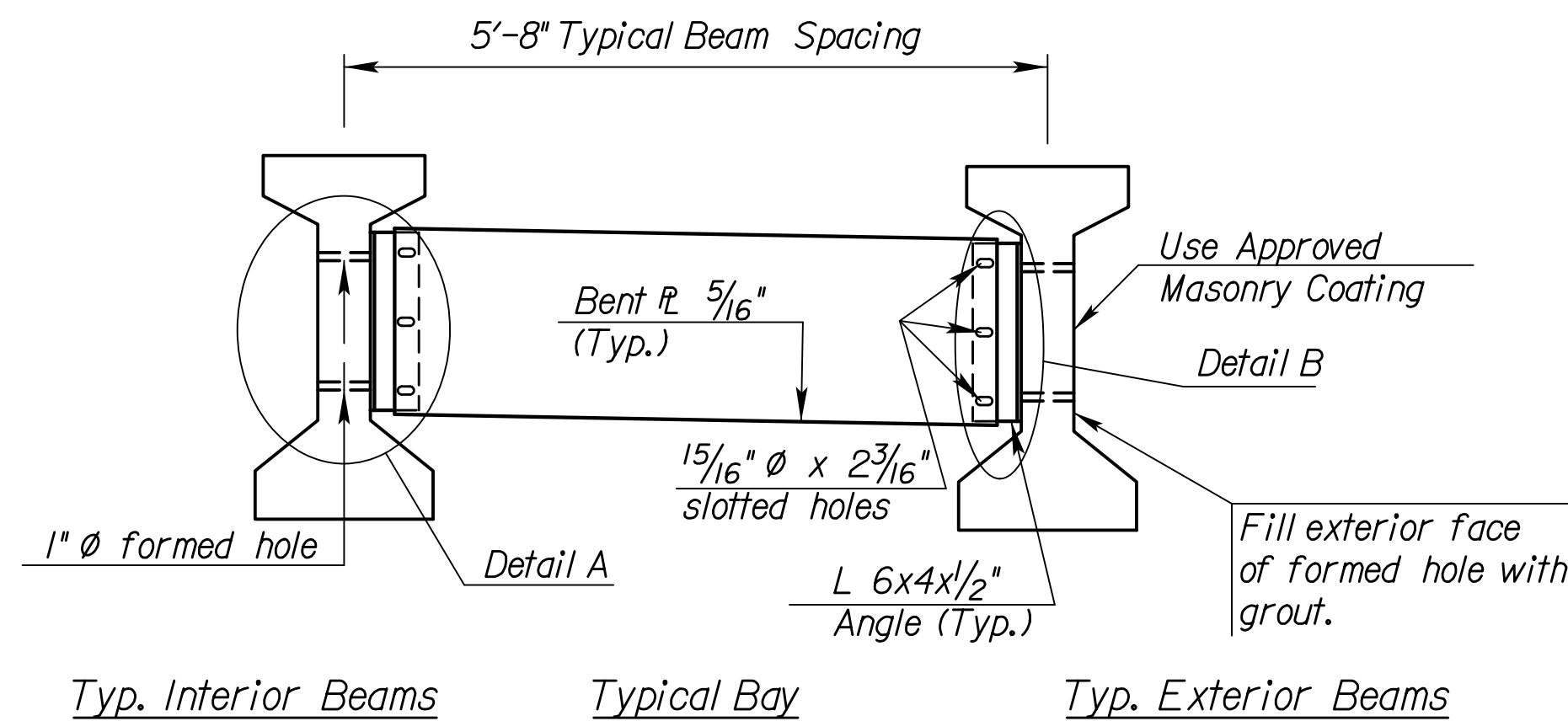


1'-10" CONNECTION ANGLE

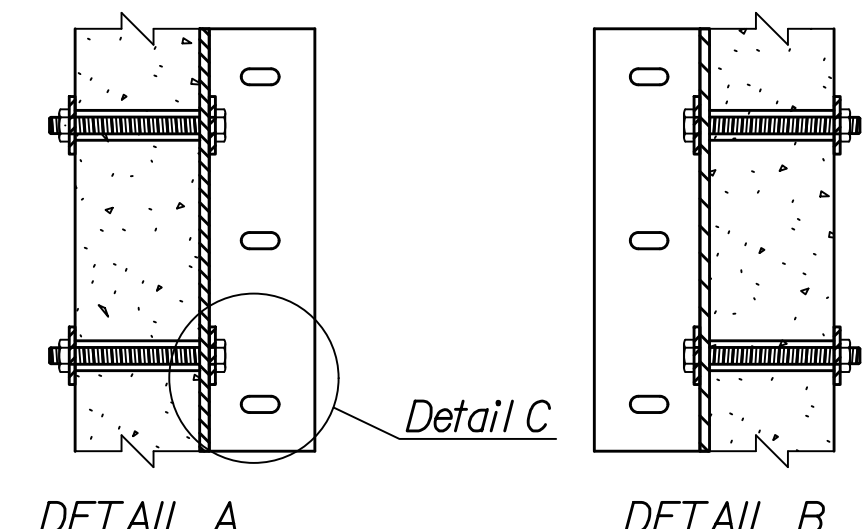
(28 each Req'd.)
(Weight = 29.7 Lb. each)

CONNECTION ANGLE DETAILS

(or equivalent)

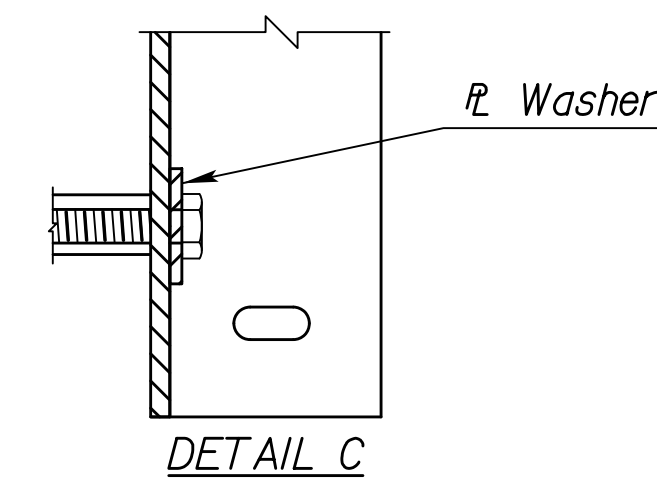


ELEVATION OF PERMANENT DIAPHRAGMS



DETAIL A

DETAIL B



DETAIL C

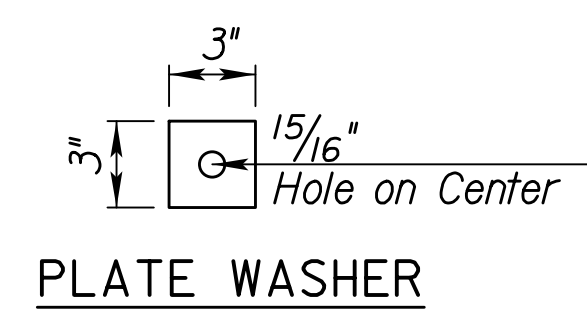
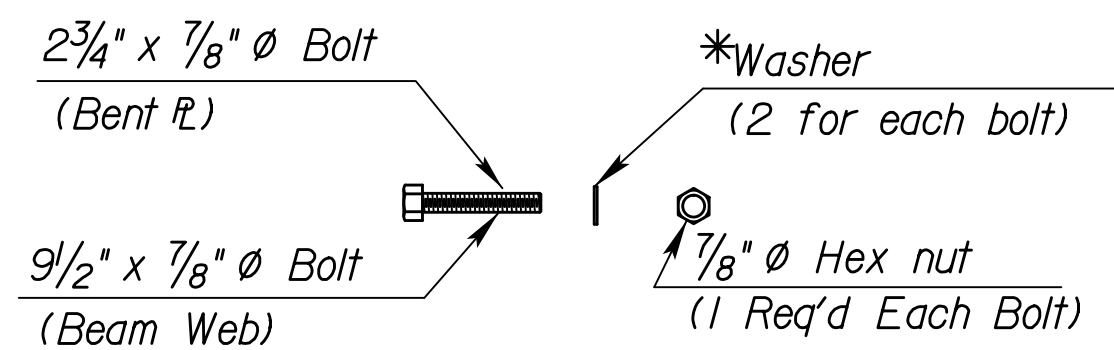


PLATE WASHER



FASTENER DETAILS

*Plate washers required for slotted holes.

PERMANENT DIAPHRAGMS: Use galvanized ASTM A709 Gr. 36 steel for all angles and bent plates for permanent diaphragms. All bolts, nuts, and washers for fasteners shall conform to the heavy hex structural requirements of ASTM A325, Type 1. Use hardened steel washers over any oversized holes. Use 5/16" plate washers over any slotted holes along with hardened washers under the turned elements. Use the turn-of-the-nut tightening method. DTI's are not required. Install the permanent diaphragms, as shown in the details, prior to placing any superstructure concrete. Leave the permanent diaphragms in place.

Submit shop drawings of the permanent diaphragms to the KDOT Bridge Section for review and approval. The material, equipment, and labor necessary for the installation of the permanent diaphragms shall be included in the bid item "Structural Steel (A709) (Gr. 36)".

Plotted By: msn
File: I:\2009\09521\Office Check 03-2012\Bridge\09521-BR-br-305.dgn
Plot Date: 12/30/2013

3				
2				
1	7-30-08	New Base Sheet	JPJ	LRR
NO.	DATE	REVISIONS	BY	APP'D
KANSAS DEPARTMENT OF TRANSPORTATION				
Br. No. 96-87-32.78 (412) E.B.		Sta. 463+49.36		
Br. No. 96-87-32.79 (411) W.B.		Sta. 463+48.72		
PERMANENT DIAPHRAGM DETAILS				
K-96 OVER GREENWICH ROAD				
Proj. No. 472-85066		Sedgwick Co.		
SHEET NO.	OF	SCALE	APP'D	
DESIGNED	BY	DATE	JPJ	RAA
DESIGN CK.	BY	DATE	QUAN. CK.	CADD CK.