

STATE	PROJECT NO.	YEAR	SHEET NO.	TOTAL SHEETS
KANSAS	472-85066	2014	200	388

GENERAL NOTES

DESIGN CONFORMS WITH ASHTO "STANDARD SPECIFICATIONS FOR STRUCTURAL SUPPORTS FOR SIGNS, LUMINAIRES, AND TRAFFIC SIGNALS 2002". FOUNDATION DESIGN CONFORMS WITH "DESIGN PROCEDURE COMPARED TO FULL-SCALE TESTS OF DRILLED SHAFT FOOTINGS", TEXAS TRANSPORTATION INSTITUTE, FEBRUARY 1970.

THE POST SLEEVE SHALL BE FORMED FROM STEEL SHEET WHICH WAS PRODUCED TO MEET THE REQUIREMENTS OF ASTM A653M AND ZINC COATED TO MEET THE REQUIREMENTS OF COATING DESIGNATION A123. IT IS PERMISSIBLE TO CLOSE THE BOTTOM OF THE SLEEVE WITH A METAL PLATE. BASIS OF ACCEPTANCE SHALL BE VISUAL INSPECTION OF THE FINISHED SLEEVE AND DETERMINATION

OF ZINC THICKNESS BY MAGNETIC GAGE. ALL SIGN MOUNTING HOLES IN THE WOOD POSTS SHALL BE DRILLED PRIOR TO TREATING.

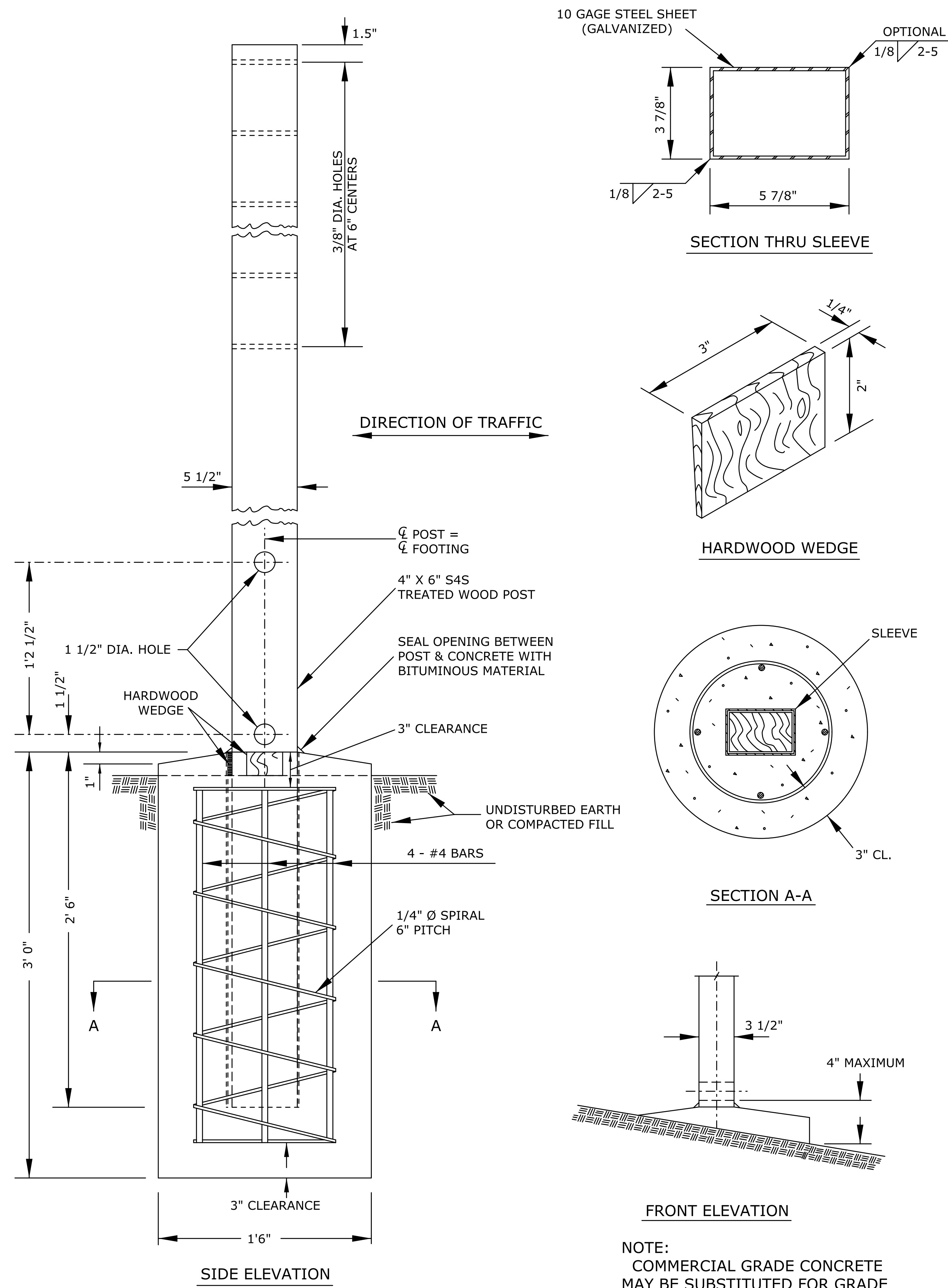
BREAKAWAY HOLES AND FIELD CUTS SHALL BE TREATED IN ACCORDANCE WITH THE PRESERVATIVE TREATMENT SPECIFICATIONS.

PRIOR TO SEALING THE OPENING BETWEEN THE WOOD POST AND THE TOP OF THE CONCRETE FOOTING, PLACE TWO HARDWOOD WEDGES INTO THE OPENING ON TWO ADJACENT SIDES OF POST AND FORCE DOWN TO WITHIN 3/8" OF TOP OF FOOTING.

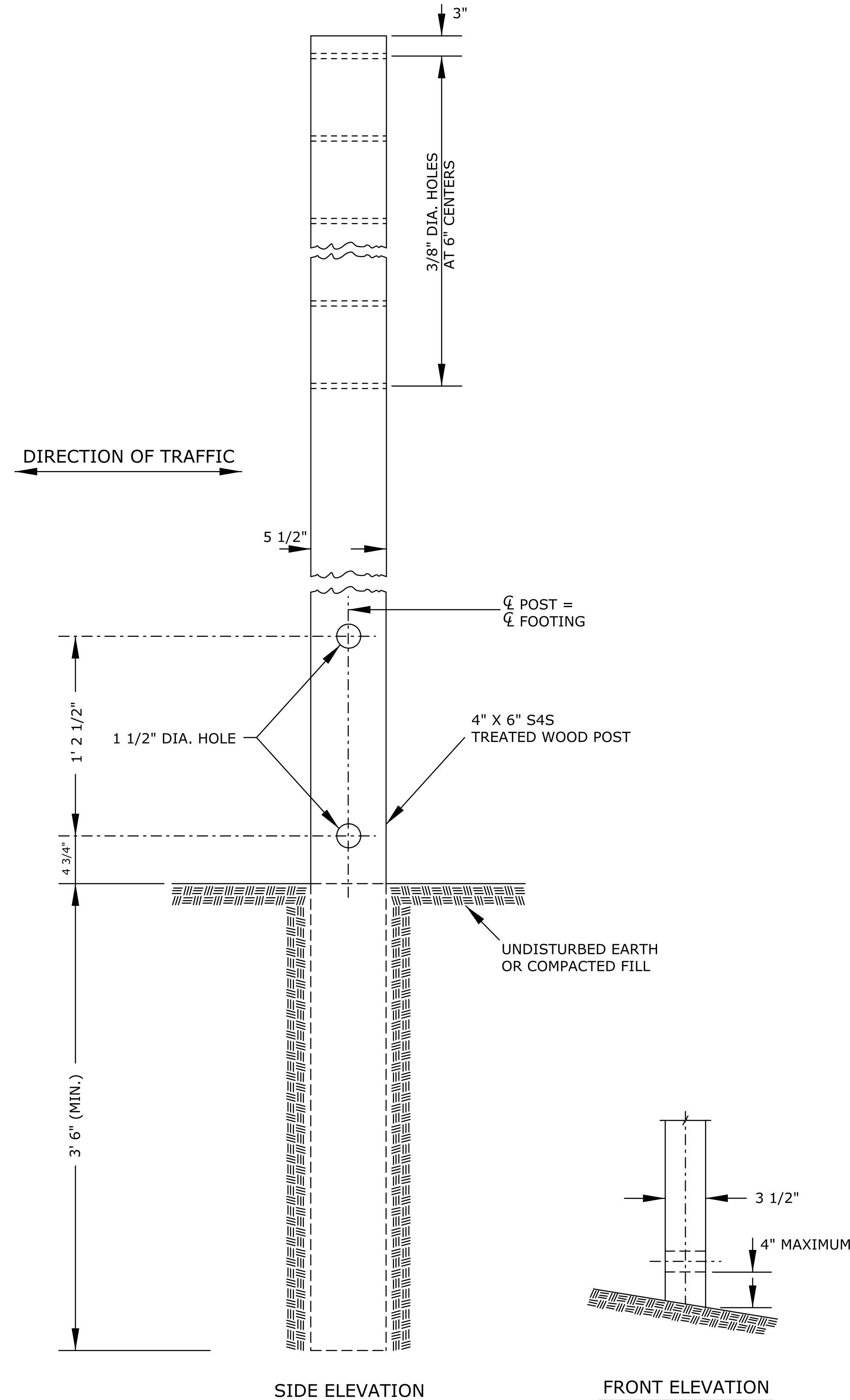
NOTE TO THE ENGINEER:
THE INTENT OF THE "ROADSIDE DESIGN GUIDE" AND THESE PLANS IS TO HAVE A 4" OR LESS PROJECTION ABOVE THE GROUND LINE AFTER IMPACT.

ALL DIMENSIONS IN INCHES UNLESS OTHERWISE NOTED.

KANSAS DEPARTMENT OF TRANSPORTATION				
DETAILS FOR WOOD POSTS				
TE460				7/1/03
DESIGNED	D.D.G.	DATE	7/22/2003	APP'D
DESIGN CK.	S.A.B.	DETAIL CK.	D.D.G.	QUAN. CK.
				STEVEN A. BUCKLEY
				TRACED
				TRACE CK.



WOOD POST IN CONCRETE FOOTING



WOOD POST IN SOIL