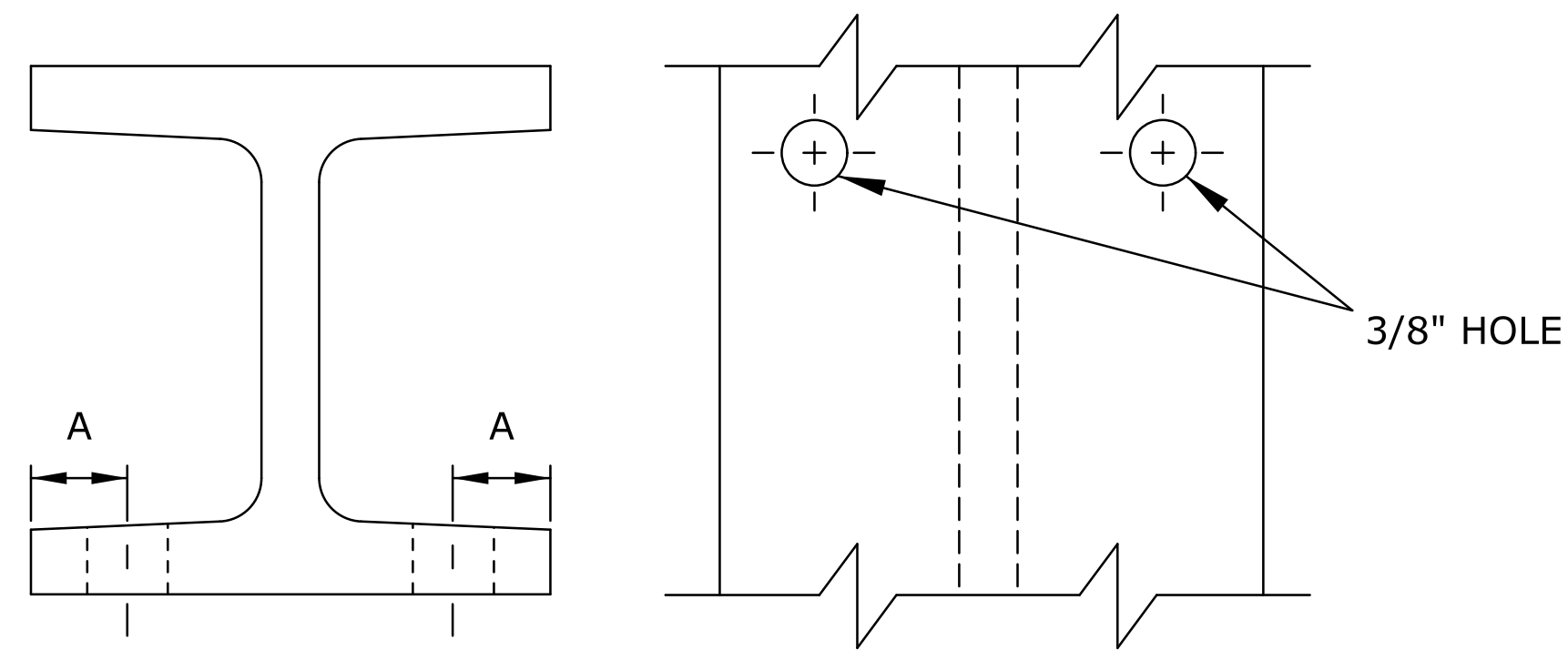
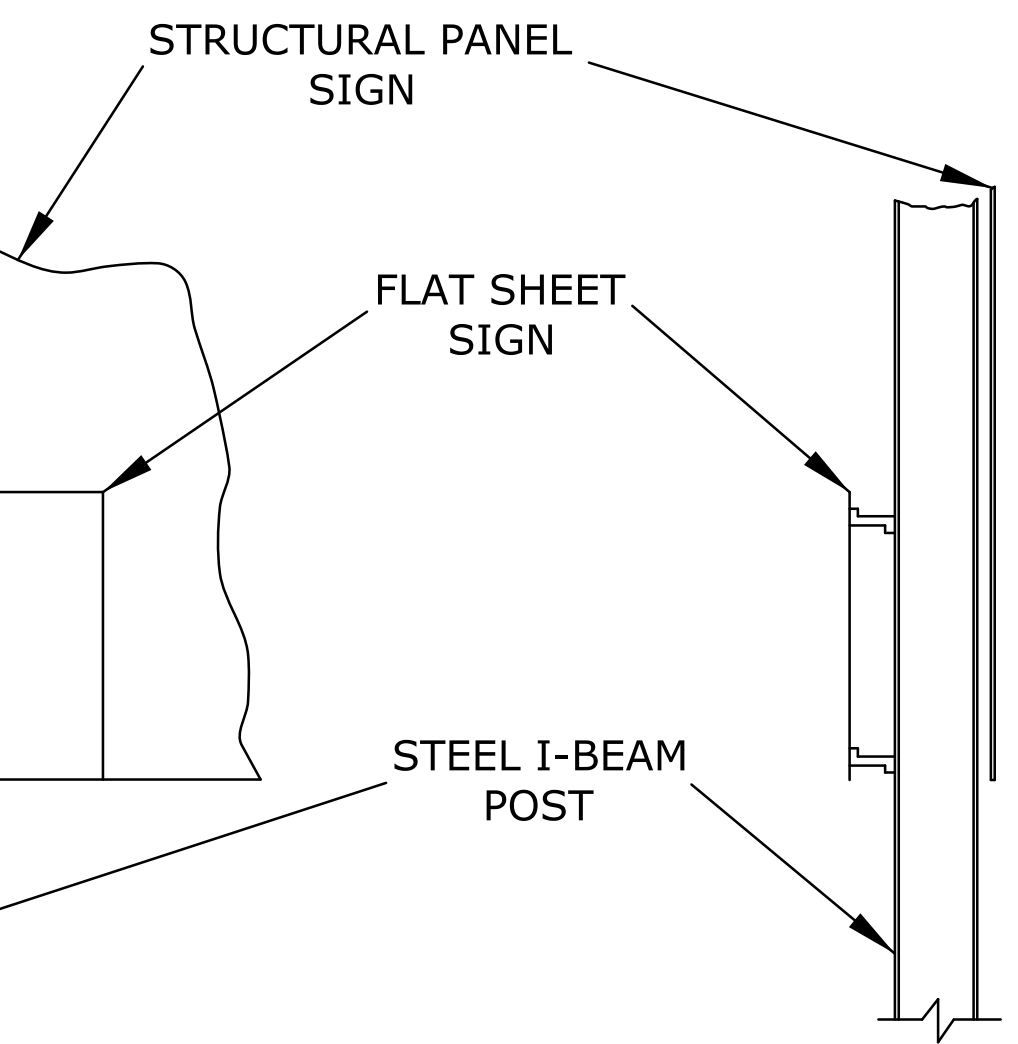
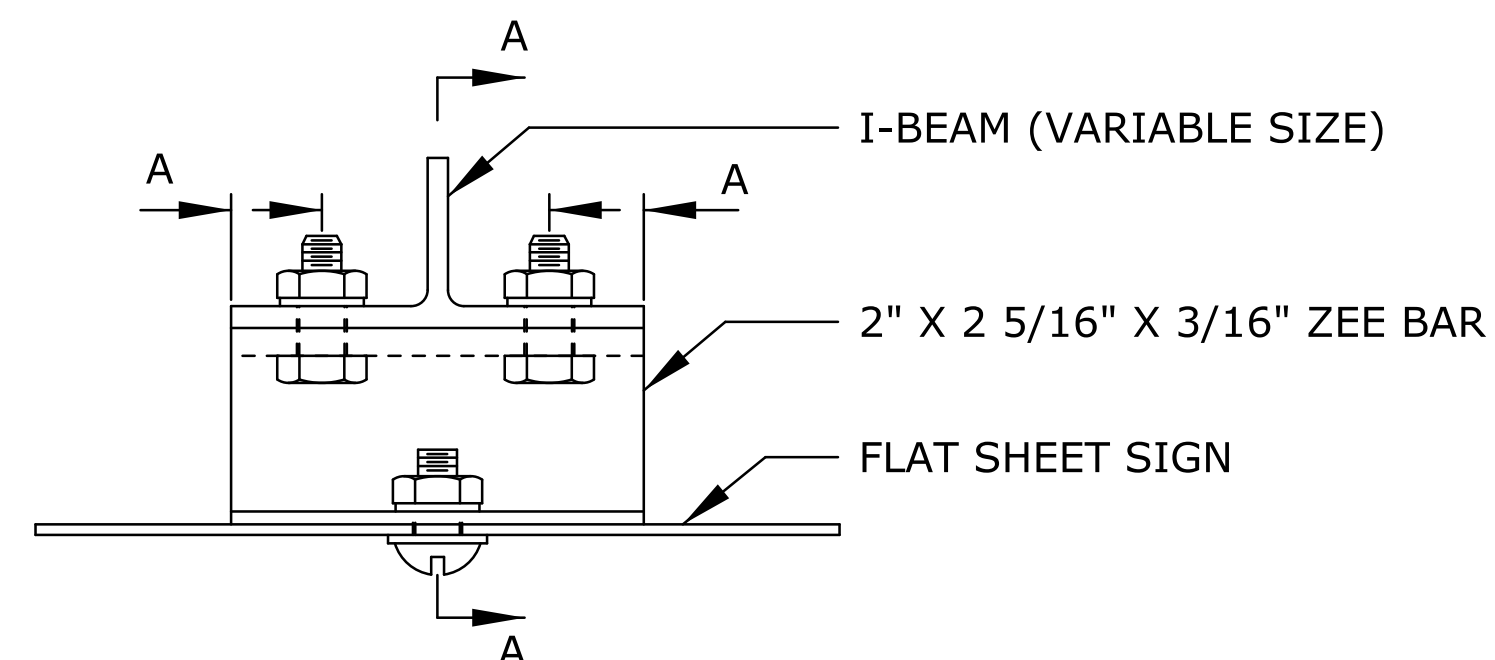


SECTION A-A

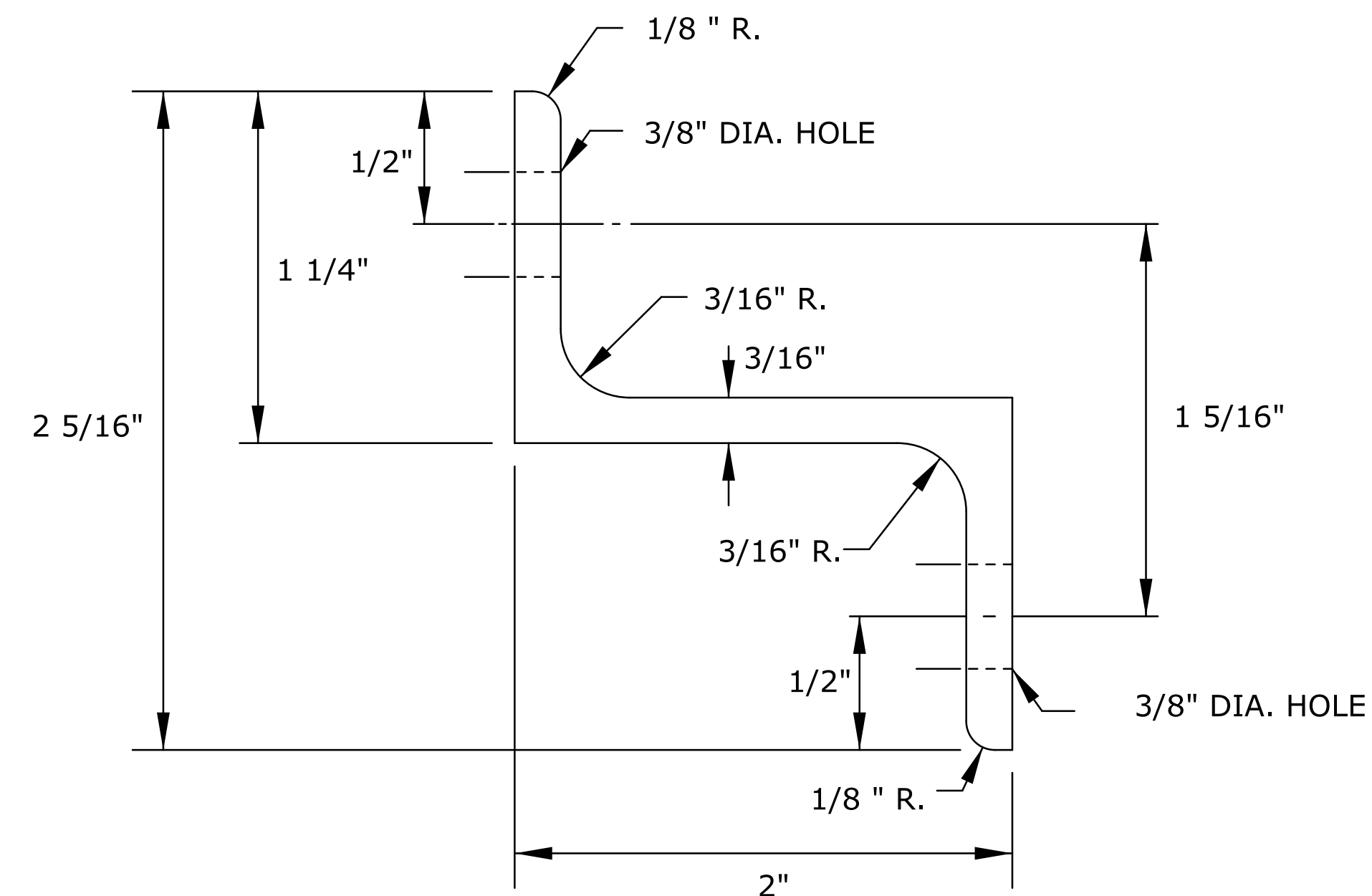
BEAM	A
S3X5.7	7/16"
W6X9	3/4"
W10X12	1 1/4"
W10X22	1 1/4"



TYPICAL I-BEAM



TYPICAL MOUNTING



TYPICAL ZEE BAR

ALL DIMENSIONS ARE IN INCHES.

NOTE:
ALL BOLTS, NUTS, WASHERS & MACHINE
SCREWS SHALL BE STEEL.

NO.	DATE	REVISIONS	BY	APP'D
KANSAS DEPARTMENT OF TRANSPORTATION DETAILS FOR MOUNTING FLAT SHEET SIGN ON STEEL I-BEAM POST				
TE487		7/1/03		
FHWA APPROVAL	7/22/2003	APP'D	Steven A. Buckley	
DESIGNED	D.D.G.	DETAILED	B.A.H.	QUANTITIES
DESIGN CK.	S.A.B.	DETAIL CK.	D.D.G.	QUAN. CK.
			TRACED	TRACE CK.