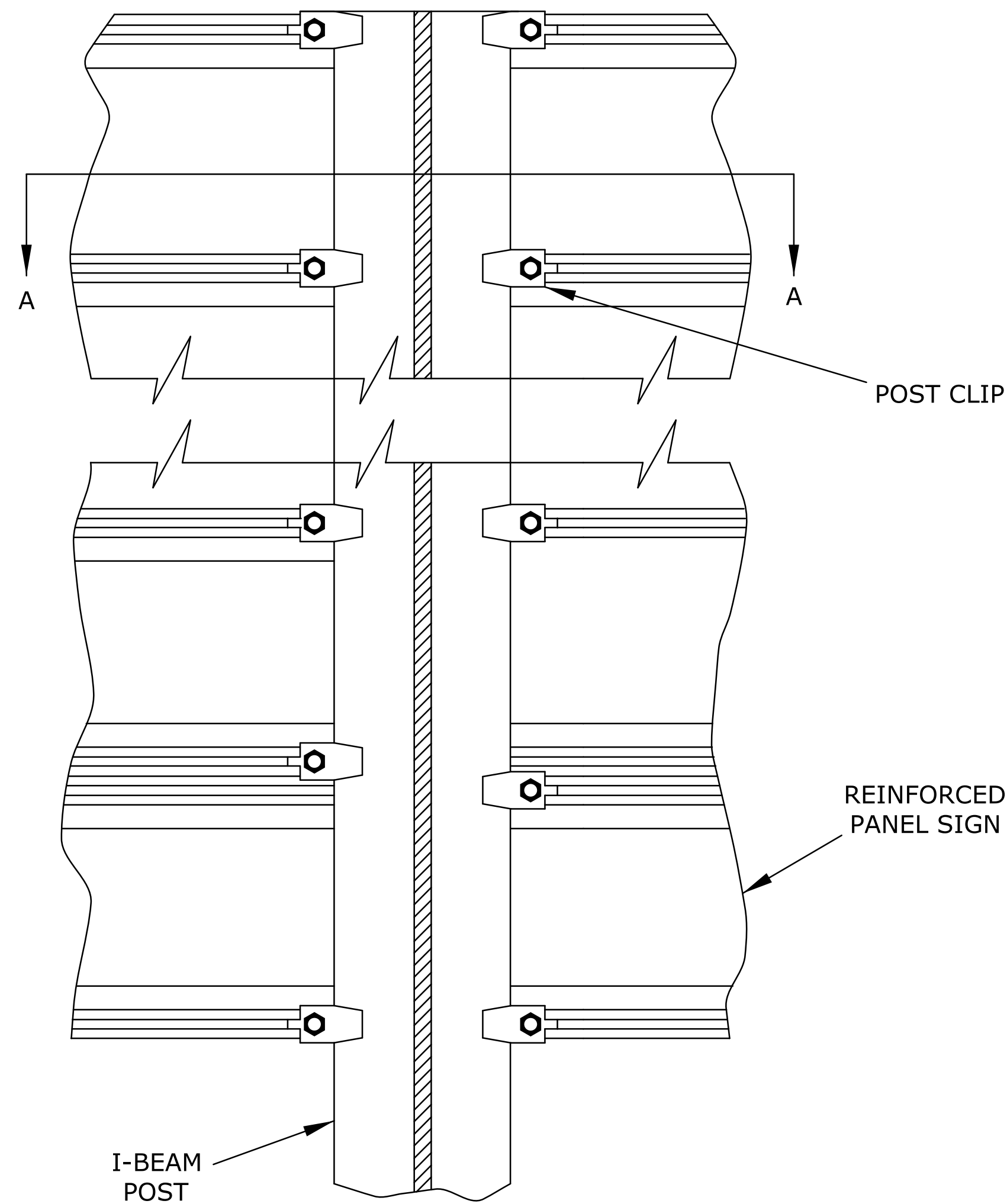
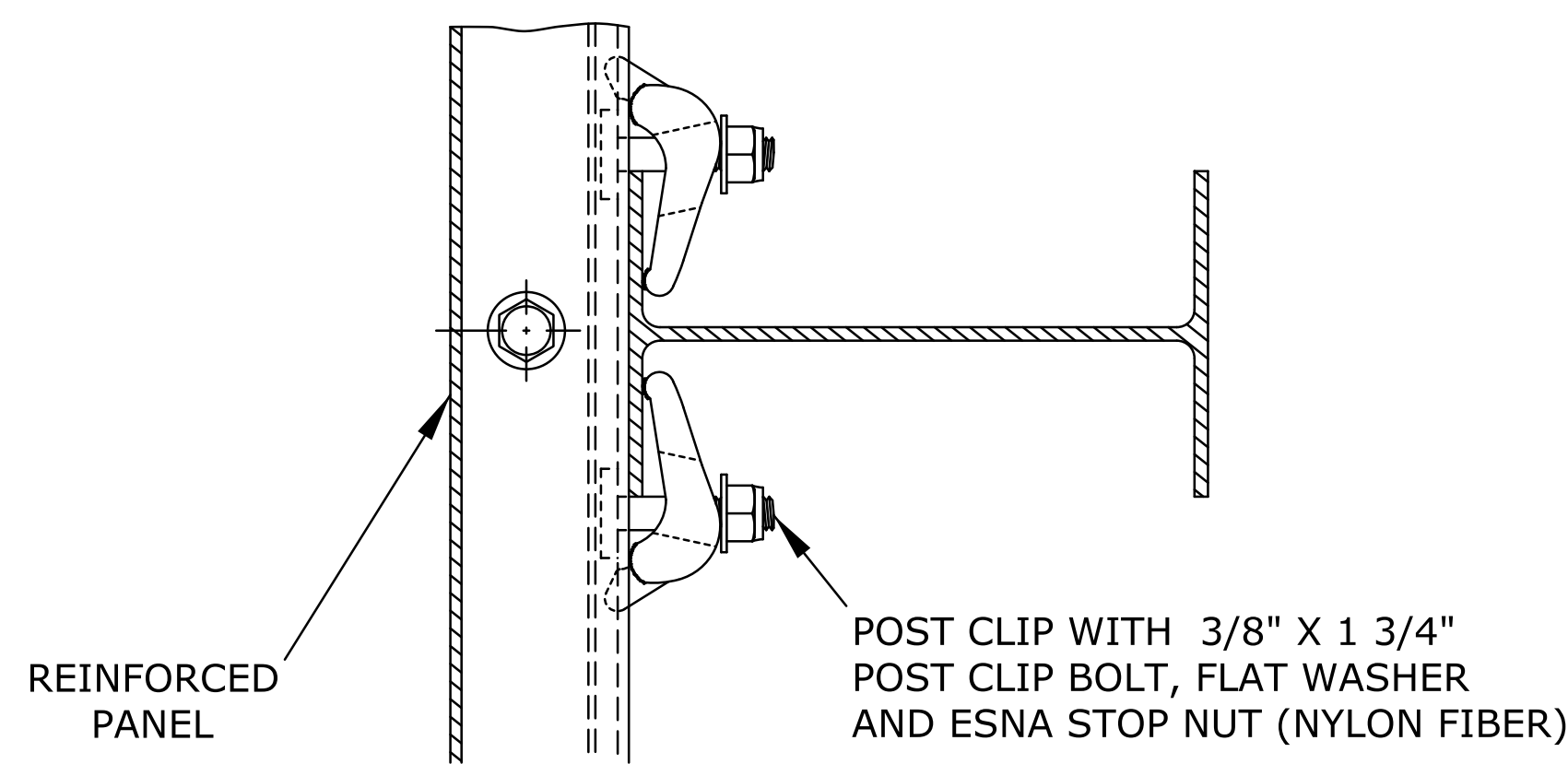


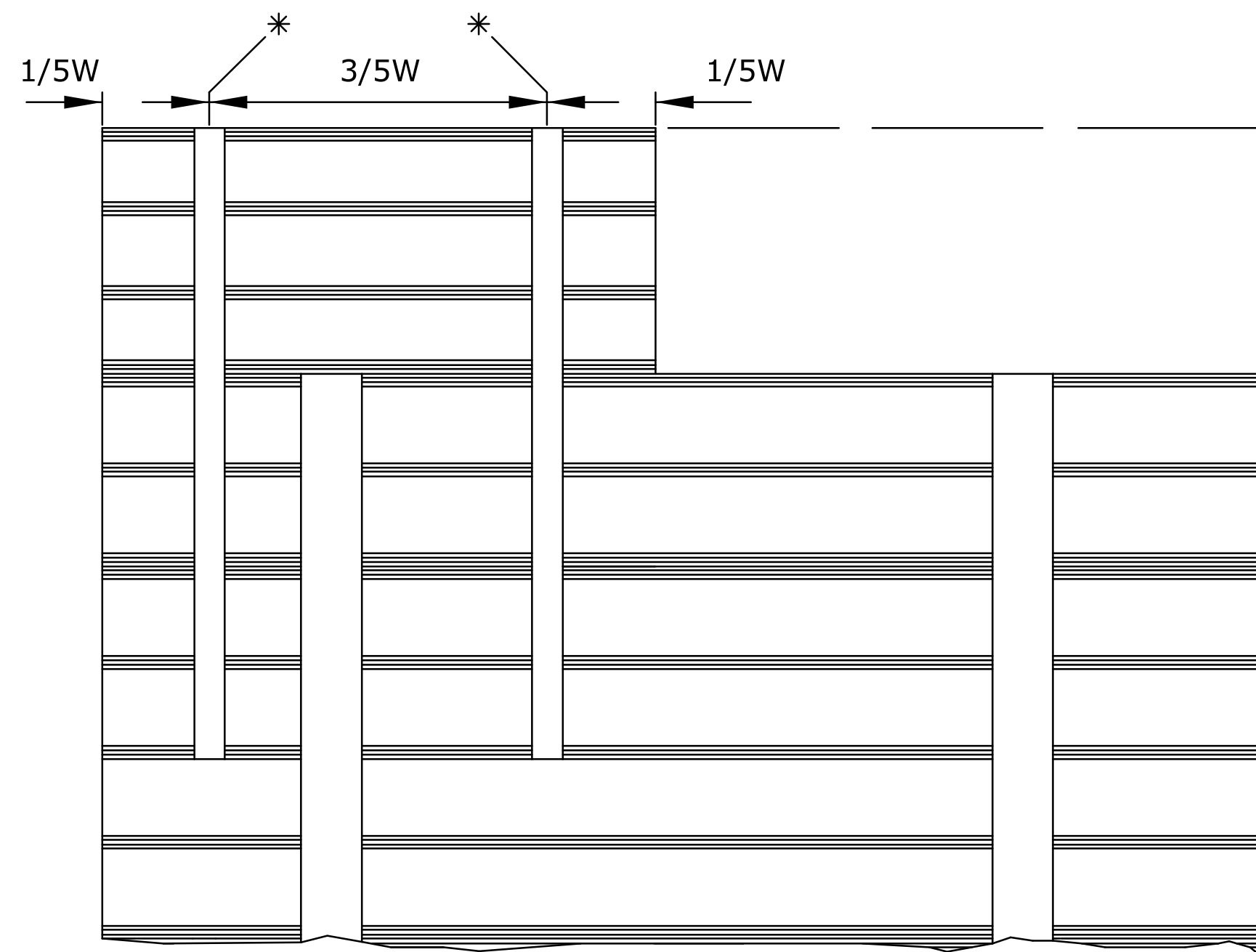
STATE	PROJECT NO.	YEAR	SHEET NO.	TOTAL SHEETS
KANSAS	472-85066	2014	206	388



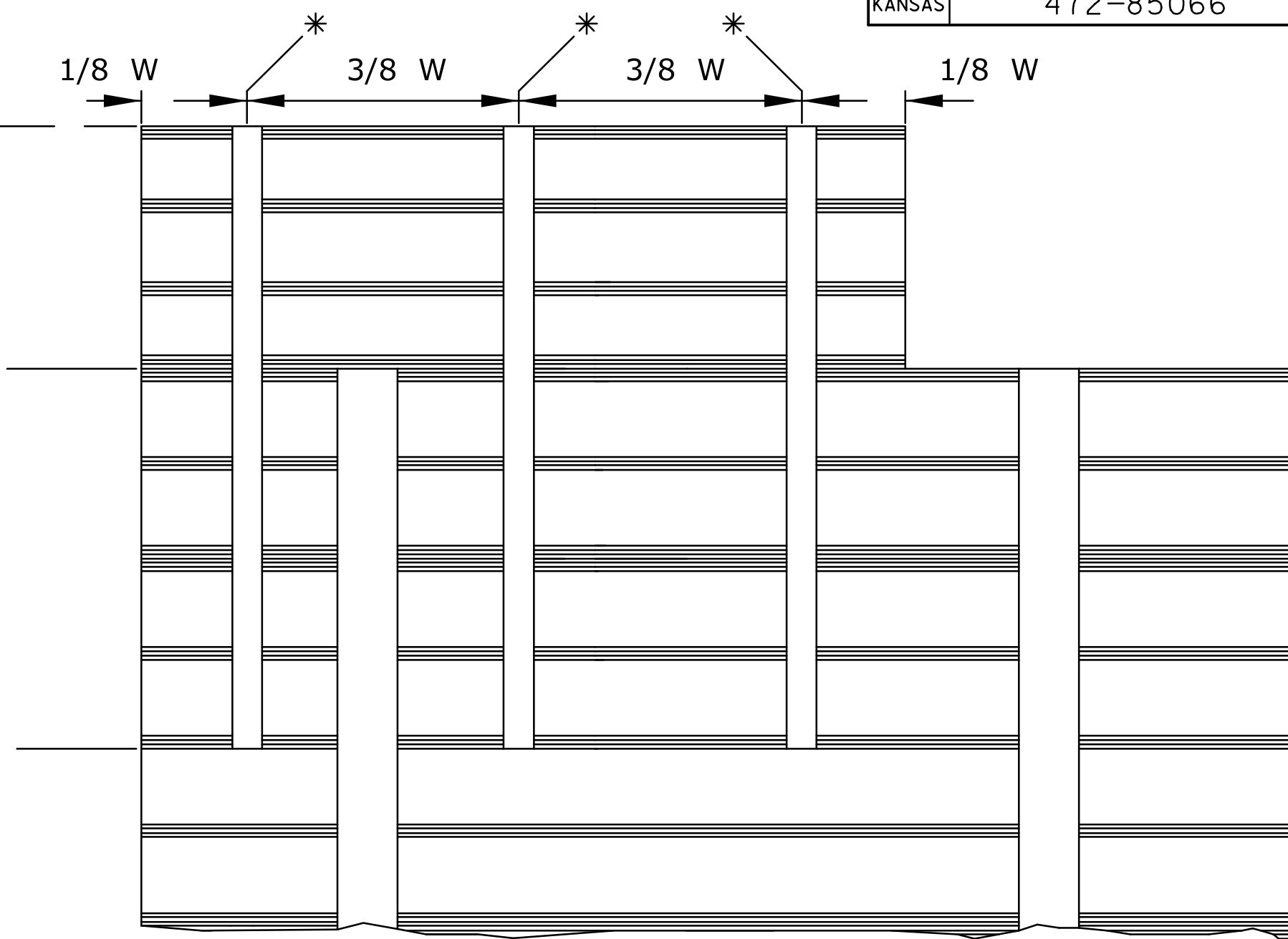
MOUNTING OF REINFORCED PANELS TO I-BEAM POST



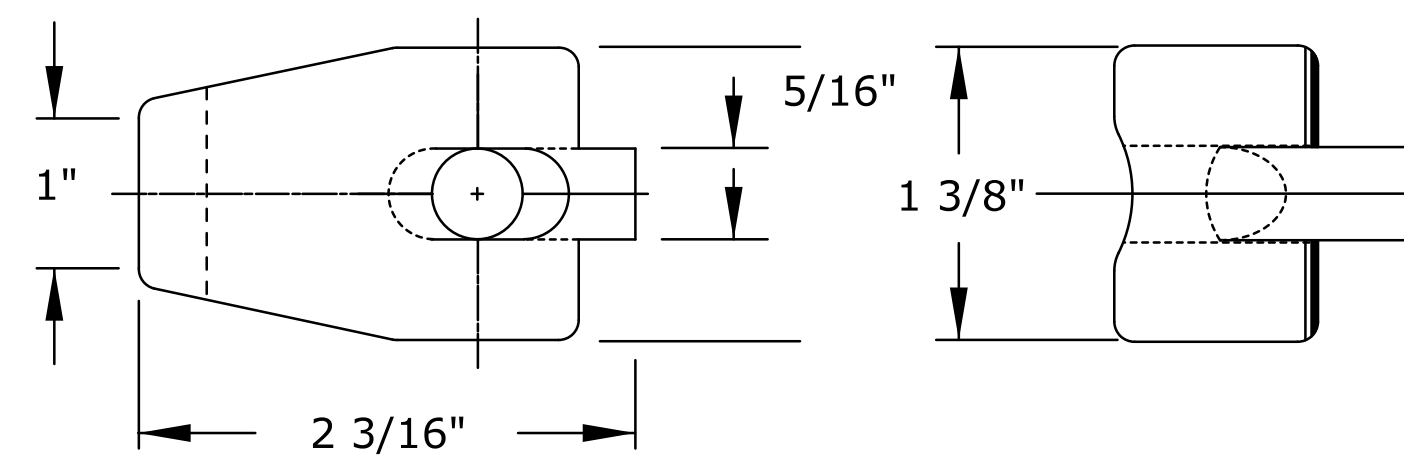
SECTION A-A



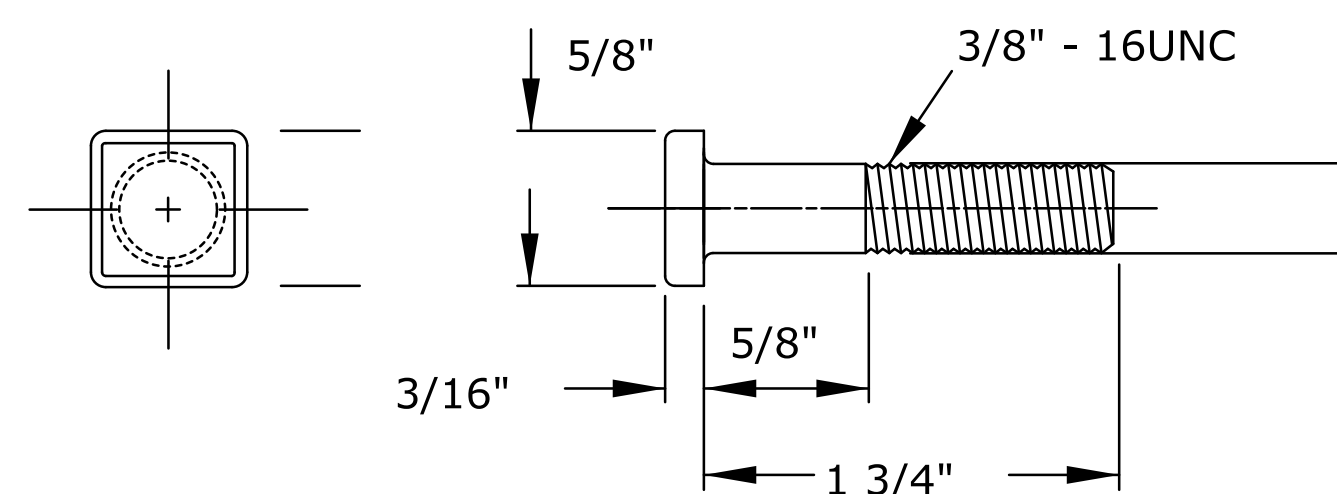
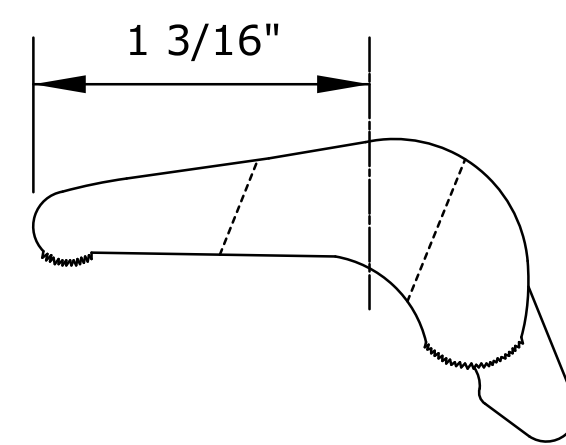
E1-5 MOUNTING FROM RIGHT EXIT (2 I-BEAMS)



E1-5 MOUNTING FROM RIGHT EXIT (3 I-BEAMS)



POST CLIP ALUMINUM



POST CLIP BOLT ALUMINUM

NOTES:

- \* - CENTERLINE OF ALUMINUM I-BEAM
- H1 - HEIGHT OF ADDED SIGN (E1-5)
- H2 - H1 + 12" OR TO THE BOTTOM OF THE NEXT STIFFENER
- THE E1-5 SIGN SHALL BE POSITIONED ABOVE THE GUIDE SIGN ACCORDING TO THE DIRECTION OF THE EXIT:
- RIGHT EXIT - RIGHT EDGE OF SIGN
- LEFT EXIT - LEFT EDGE OF SIGN
- TWO EXITS (ONE LEFT AND ONE RIGHT) - CENTER OF SIGN
- THE ALUMINUM I-BEAMS ARE TO BE MOUNTED AT THE SPACINGS SHOWN. IF THE I-BEAM SPACING CONFLICTS WITH THE SIGN POSTS, THEN THE I-BEAM IS TO BE MOVED TO THE SIDE OF THE SIGN POST THAT MORE CLOSELY FITS THE SPACINGS AND AS DETERMINED BY THE ENGINEER.
- THE POST CLIP BOLT MAY HAVE A RECTANGULAR HEAD, IF THE SMALLER DIMENSION IS EQUAL TO THE SQUARE HEAD DIMENSION.

ALL DIMENSIONS ARE IN INCHES.

NO.	DATE	REVISIONS	BY	APP'D
KANSAS DEPARTMENT OF TRANSPORTATION DETAILS FOR MOUNTING REINFORCED PANEL SIGN ON I-BEAM POST				
TE490		7/1/03		
DESIGNED	D.D.G.	DETAILED	B.A.H.	QUANTITIES
DESIGN CK.	S.A.B.	DETAIL CK.	D.D.G.	QUAN. CK.
APPROVAL		7/22/2003	APP'D	Steven A. Buckley
DESIGNED		D.D.G.	DETAILED	B.A.H.
DESIGN CK.		S.A.B.	DETAIL CK.	D.D.G.