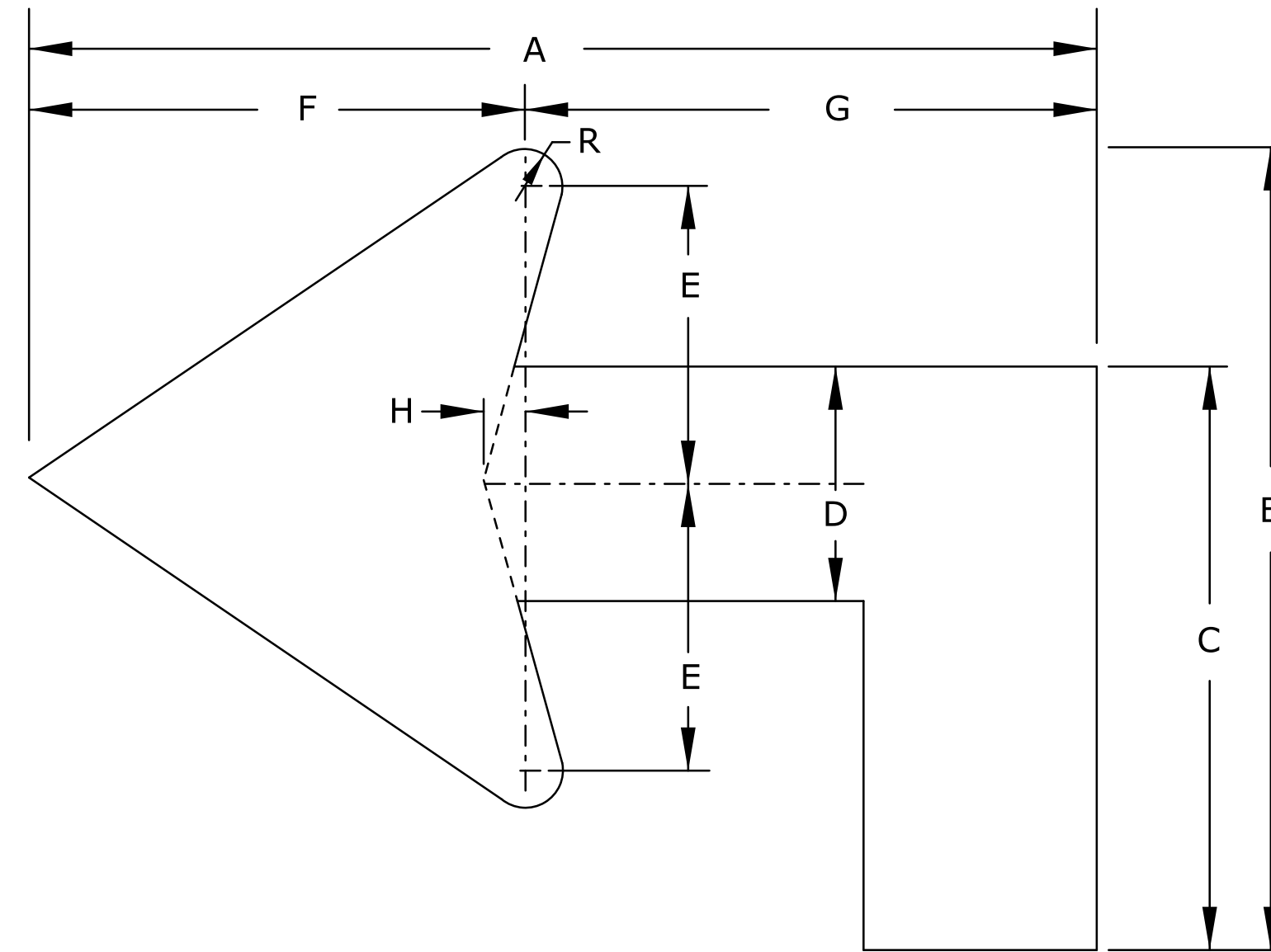


ARROW DIMENSIONS ( INCHES )

LETTER HEIGHT	A	B	C	D	E	F	R
4"	4	3¼	1½	7/32	6	3	5/16
6"	6	4⅞	2¼	5/16	9	4½	7/16
8"	8	6½	3	7/16	12	6	5/8

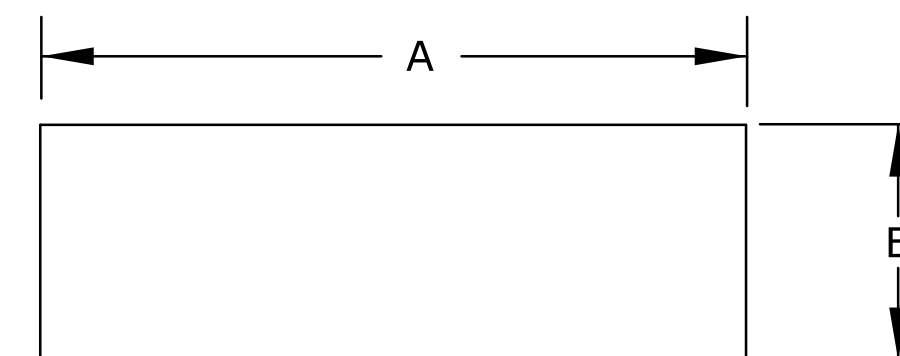
STANDARD ARROW



ARROW DIMENSIONS ( INCHES )

LETTER HEIGHT	A	B	C	D	E	F	G	H	R
6"	10⅞	7½	5⅝	2¼	29/16	4½	5⅝	5/16	7/16
8"	13½	10	7½	3	3⅜	6	7½	7/16	5/8

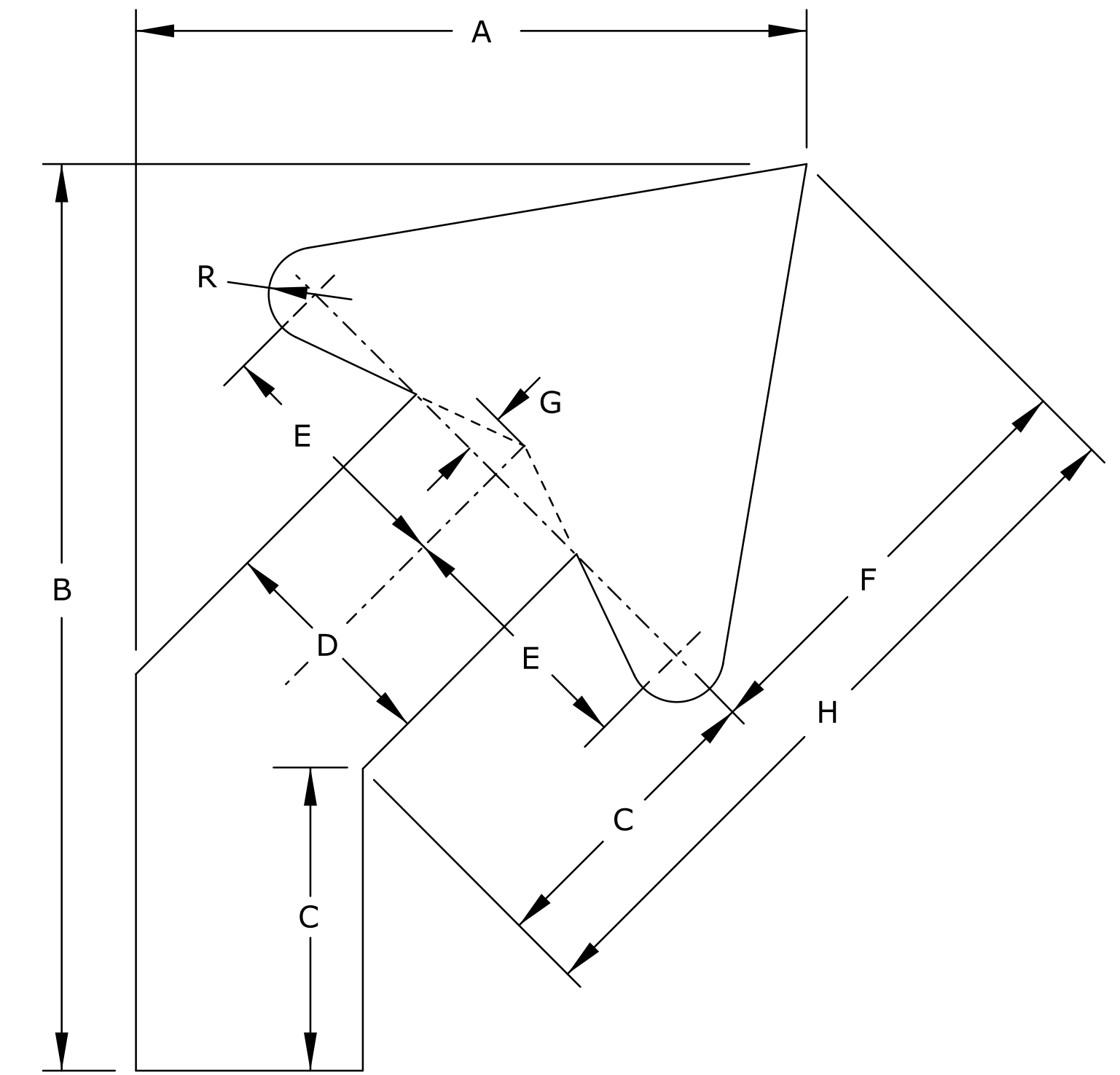
ADVANCE TURN (90°)



HYPHEN DIMENSIONS ( INCHES )

LETTER HEIGHT	A	B
6"	3	1
8"	4½	1½
10.67"	6	2
13.33"	7½	2½
16"	9	3

HYPHEN



ARROW DIMENSIONS ( INCHES )

LETTER HEIGHT	A	B	C	D	E	F	G	H	R
6"	6¾	9	3	2¼	65	4¼	5/16	7½	7/16
8"	9	12	3 15/16	3	3⅜	6	11	10	5/8

ADVANCE TURN (45°)

NOTE:  
SEE STANDARD PLAN SHEET TE590 FOR DETAILED SPECIFICATIONS.

ALL DIMENSIONS ARE IN INCHES.

NO.	DATE	REVISIONS	BY	APP'D

KANSAS DEPARTMENT OF TRANSPORTATION  
GUIDE SIGN  
LEGEND DETAILS  
ARROWS AND HYPHENS

TE563 7/1/03

FHWA APPROVAL	7/22/2003	APP'D	Steven A. Buckley
DESIGNED	D.D.G. DETAILED	W.S.B. QUANTITIES	TRACED
DESIGN CK.	S.A.B. DETAIL CK.	D.D.G. QUAN. CK.	TRACE CK.