

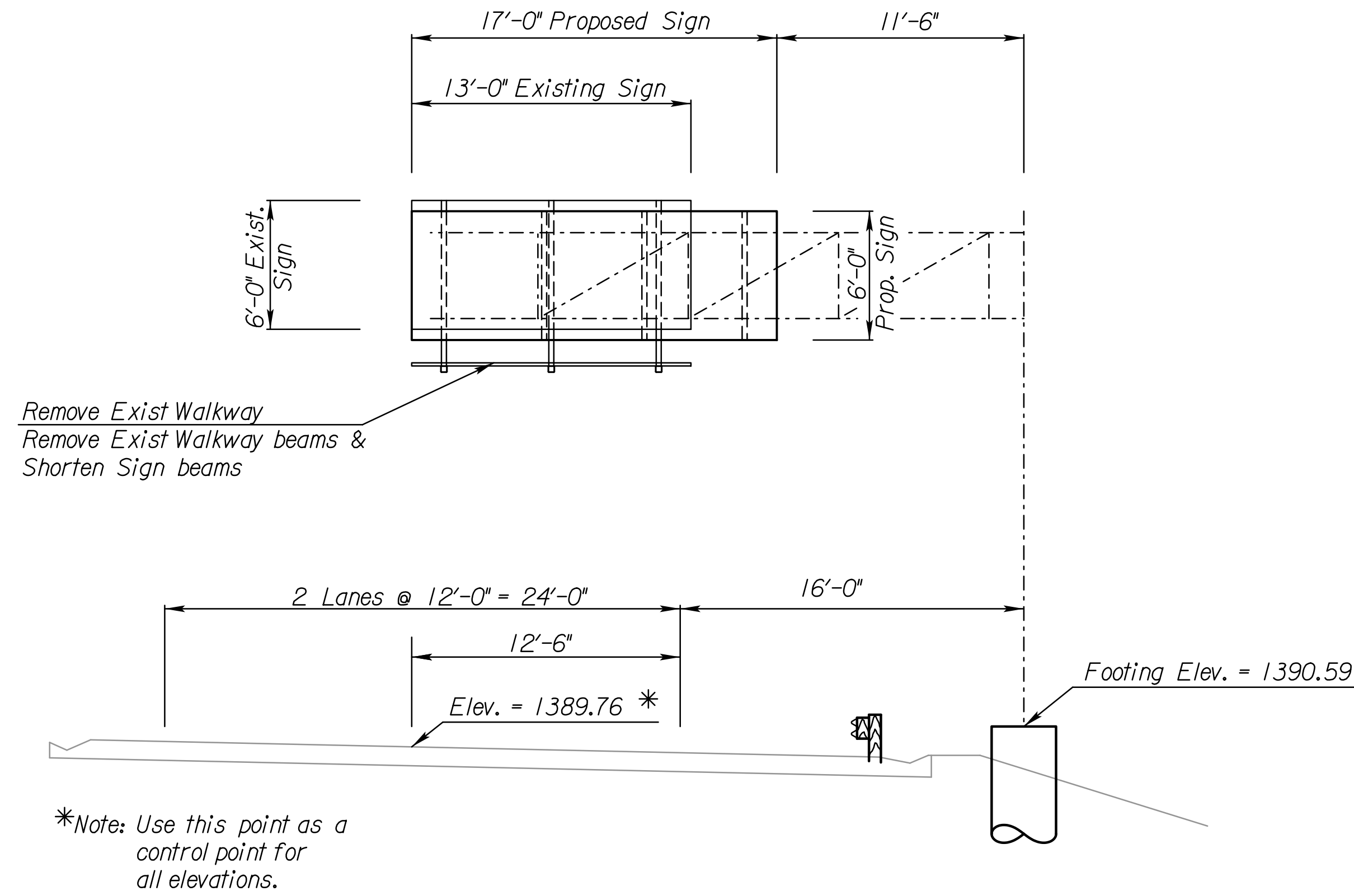
STATE	PROJECT NO.	YEAR	SHEET NO.	TOTAL SHEETS
KANSAS	472-85066	2014	222	388

** ORIGINAL DESIGN DATA
 Constructed under Project No. 96-87 K-4434-03
 Sta. 505+50
 (For Information Only)

CANTILEVER SIGN SUPPORT DETAILS **					
Design Number	"X"	Arm Length	"N"	"C"	Footing
1	19'-0"	27'-0"	3	3/32"	E
Existing Serial Number = 087SI41					

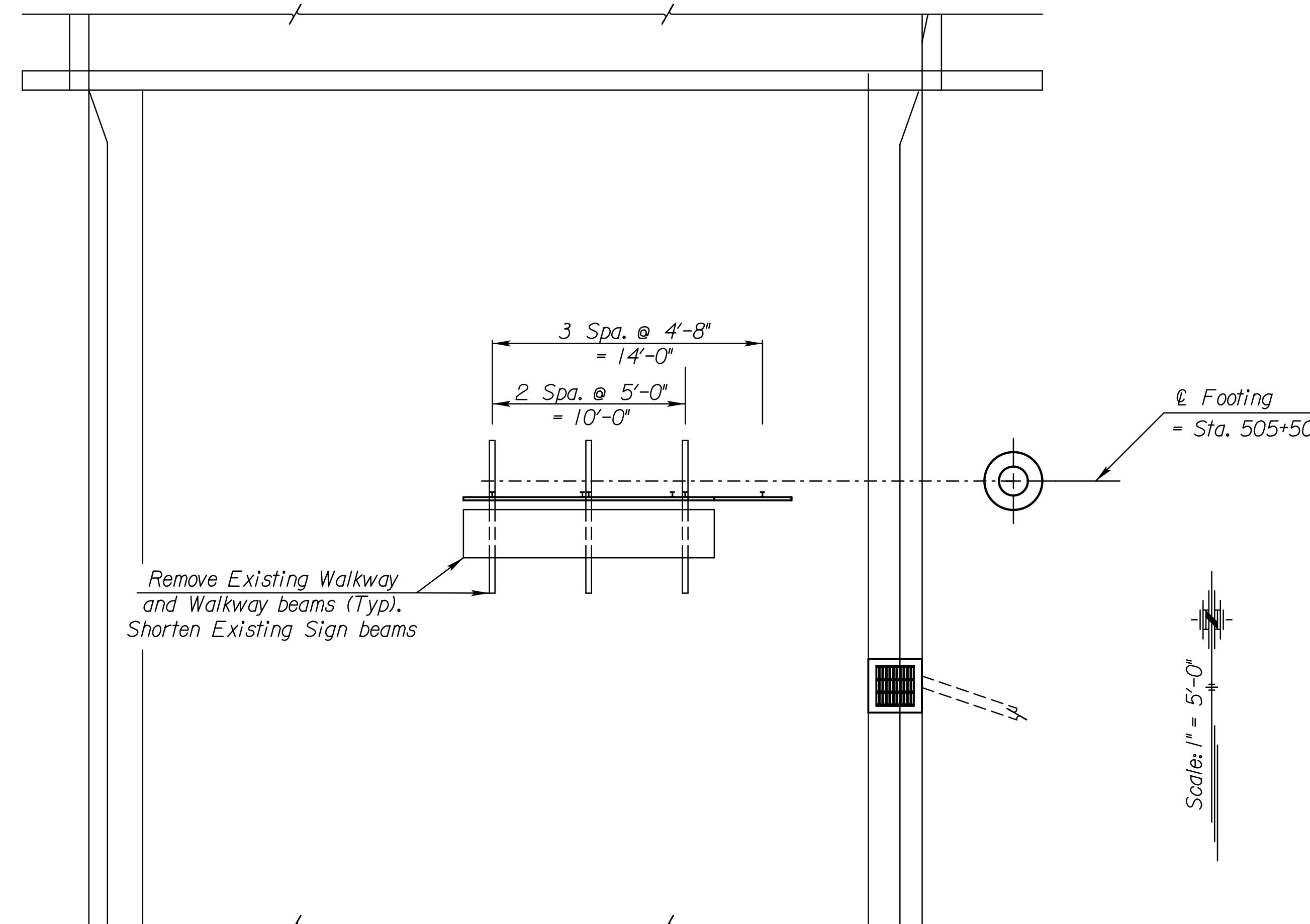
Greenwich Rd
 EXIT 3/4 MILE

New Sign
 E1-3a
 17'-0" x 6'-0"



ELEVATION

@ K-96 Sta. 505+50
 (Looking North)



PLAN

GENERAL NOTES

SIGN MODIFICATION: This work shall consist of removing the existing sign panels and sign beams and erecting the new sign panels and sign beams as shown on this sheet and on the "Standard Structural Sign supports" sheets. The existing front walkway shall be removed along with the walkway beams. All materials not re-used shall remain the property of KDOT. All labor and material necessary to complete this work shall be paid for as per each bid item "Sign Structure Modification (Station 505+50).

Maintain the existing 17'-4" min. clearance.

Dimensions: All dimensions for the existing structure are taken from the original plans and shop drawings. It shall be the Contractor's responsibility to verify these dimensions before adding the material.

Plotted By: ap
 File: A:\2009\0952\Overhead Signing - KDOT\EN35700\POS06.dgn
 Plot Date: 30-DEC-2013 16:22

3				
2				
1				
NO.	DATE	REVISIONS	BY	APP'D
KANSAS DEPARTMENT OF TRANSPORTATION NB K-96 Sta. 505+50 Cantilever Type Modification Overhead Sign Structure Construction Layout Proj. No. 096-87 EN-3570-01 Sedgwick Co.				
SHEET NO.	OF	SCALE	APP'D	
DESIGNED		DETAILED	QUANTITIES	CADD
DESIGN CK.		DETAIL CK.	QUAN. CK.	CADD CK.