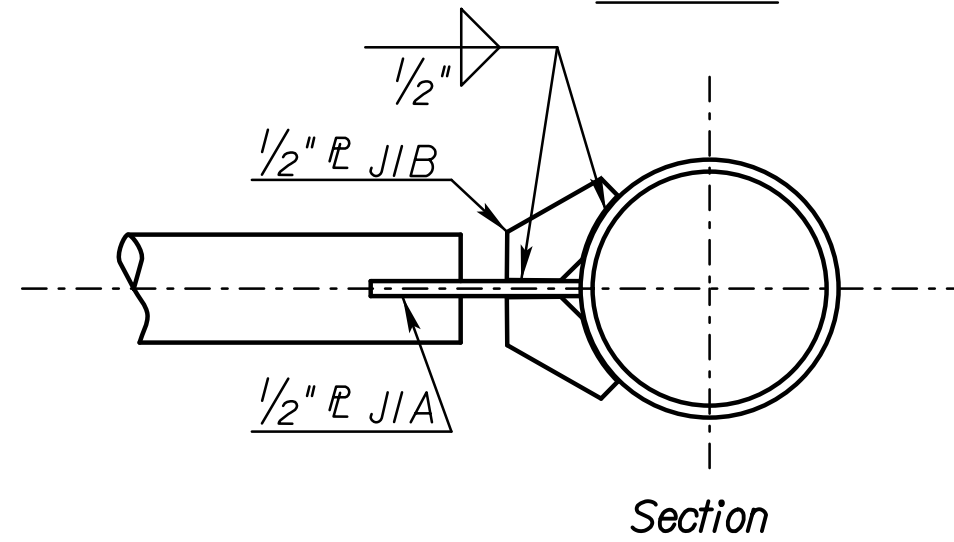
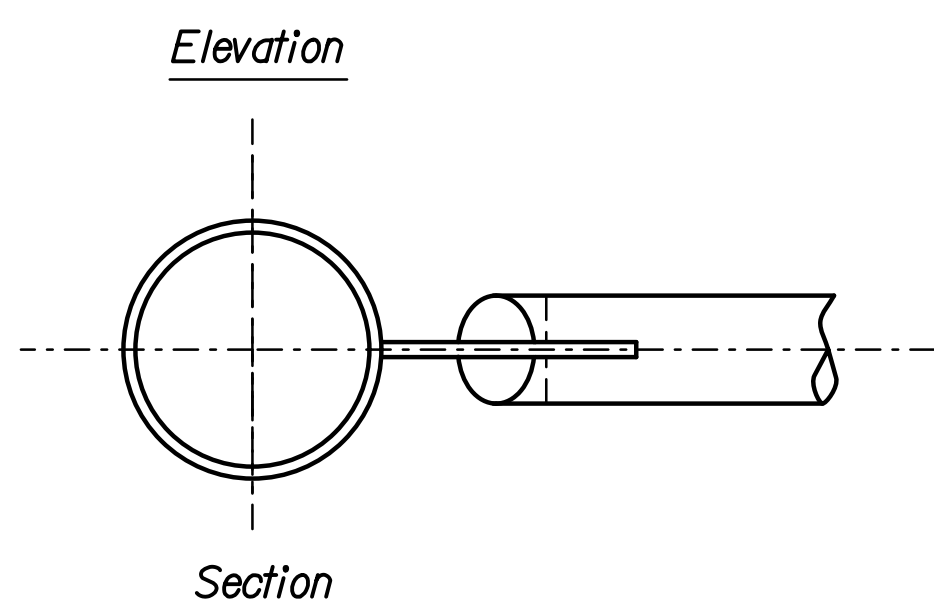
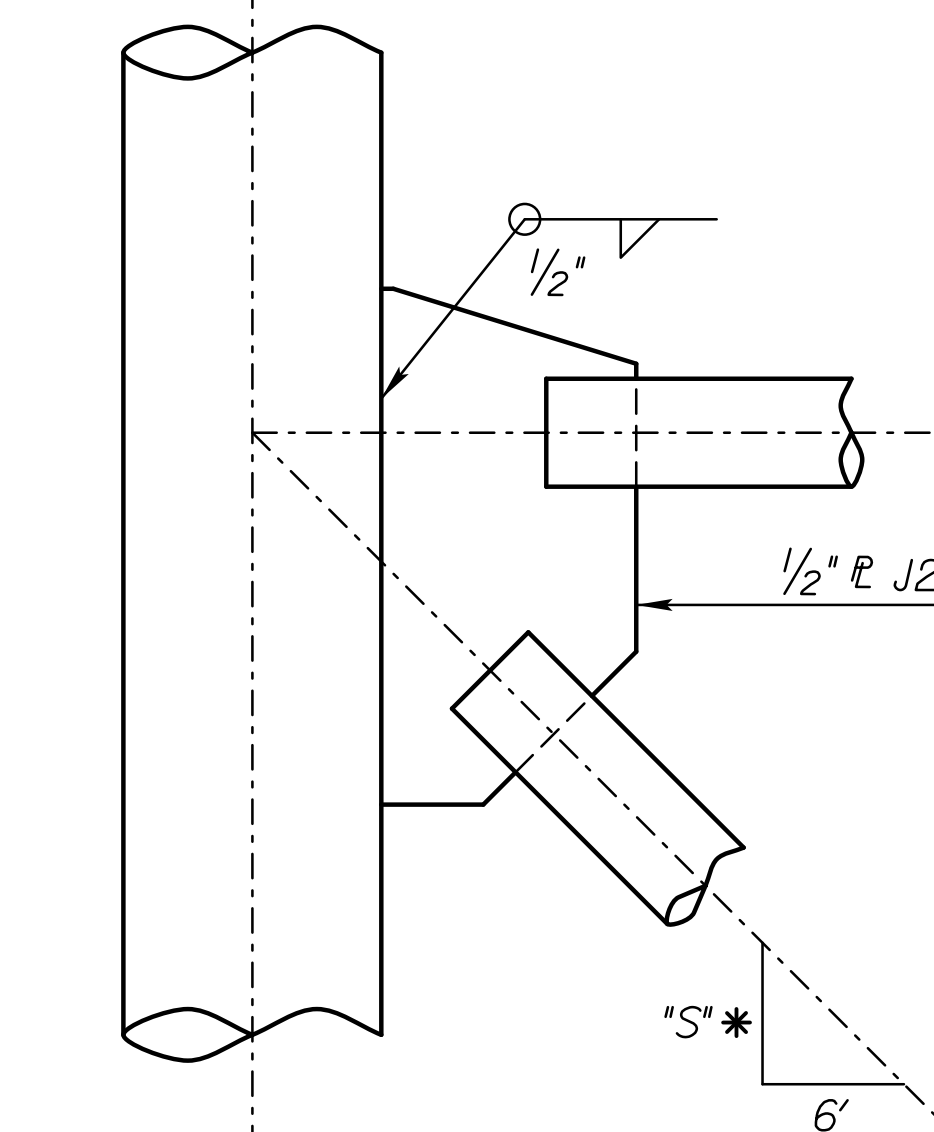


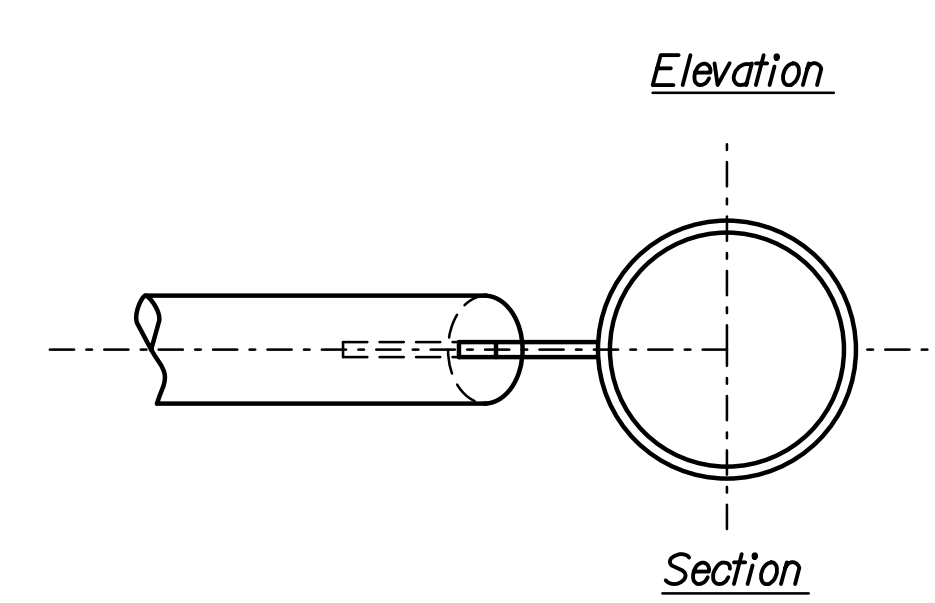
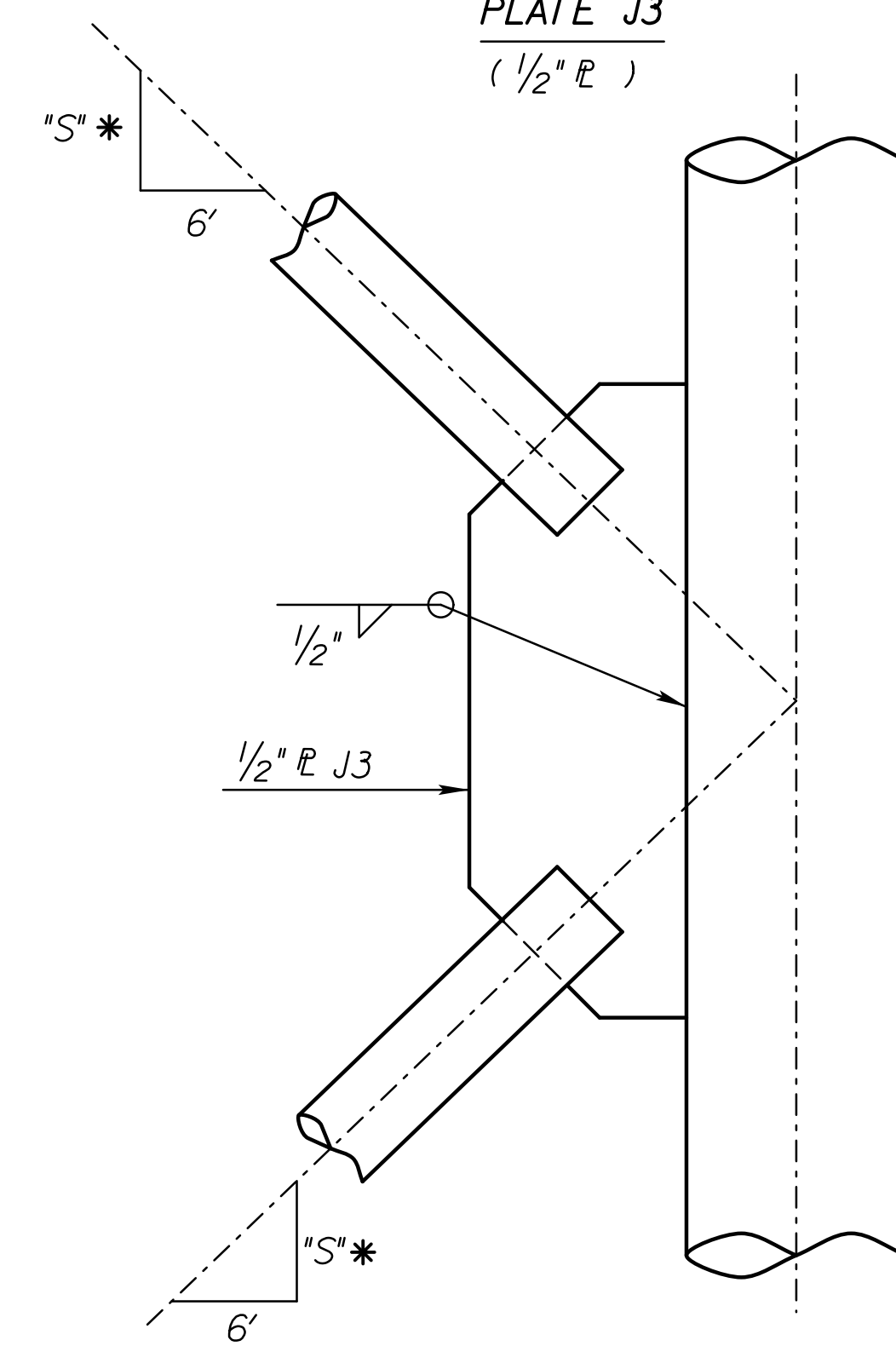
See SL151B-01  
for bolting  
assembly



DETAILS JOINT J1



DETAILS JOINT J2

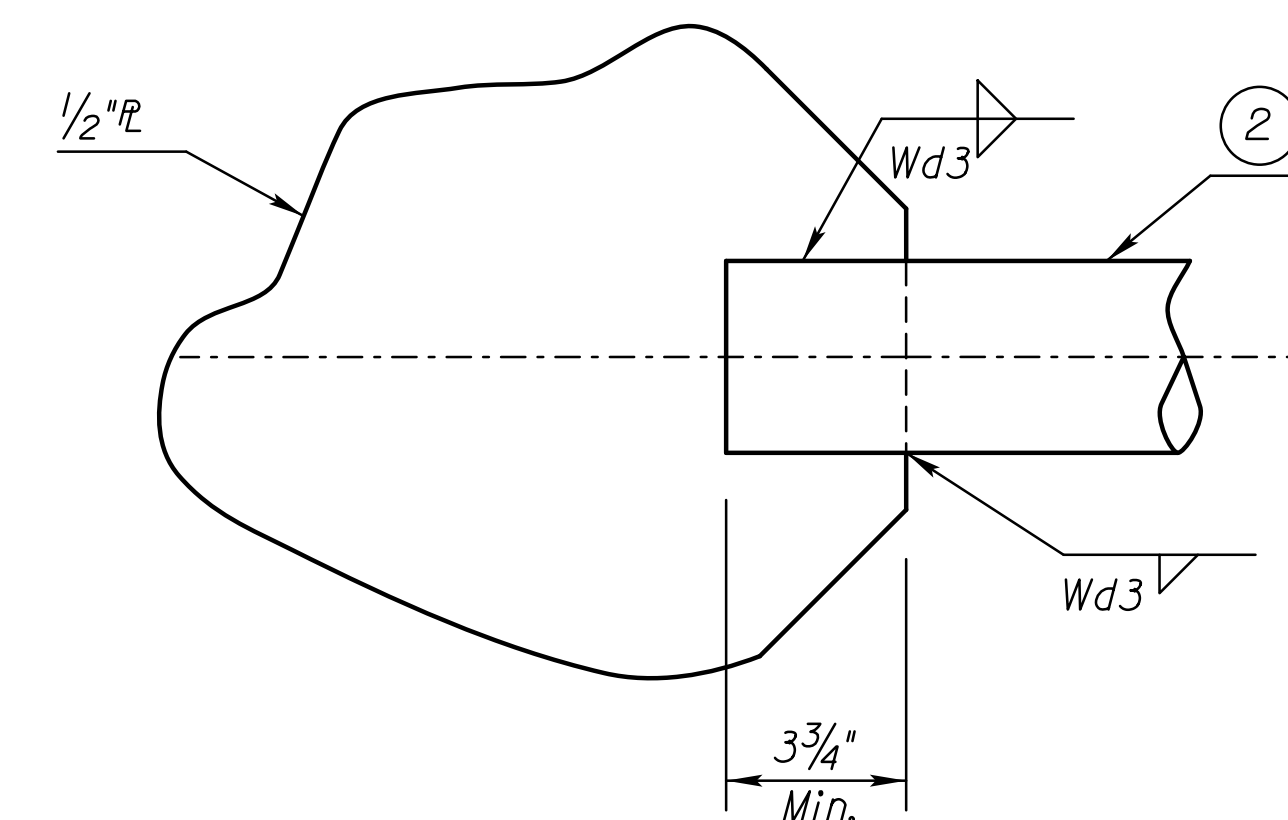


DETAILS JOINT J3

† Note: Joint J4 is identical to J3 except J4 has an additional member (See END SUPPORT ELEVATION).

Member ② * wall thickness	Fillet Weld size Wd3
0.120"	1/4"
0.237"	7/16"
0.337"	5/8"

\* See Construction Layout  
for wall thickness and "S"



NO.	DATE	REVISIONS	BY	APP'D
1	5/11/11	DTI note about bolt assembly	KMP	TLF

KANSAS DEPARTMENT OF TRANSPORTATION  
STANDARD STRUCTURAL SIGN SUPPORTS  
SPAN TYPE OVERHEAD  
ALUMINUM END SUPPORT  
JOINT DETAILS

SL151B-02

DESIGNED	BF/MJ	DATE	6-9-2011	APP'D	Terry L. Fleck
DRAWN	RDHI	DATE	6-9-2011	APP'D	DJE
CHECKED	RDHI	DATE	6-9-2011	APP'D	LES

Std. Base File:  
Plotted By: ap  
File: \\A200909521\Overhead Signing - KD007\EN357001\POS14.dgn  
Plot Date: 30-DEC-2013 16:22