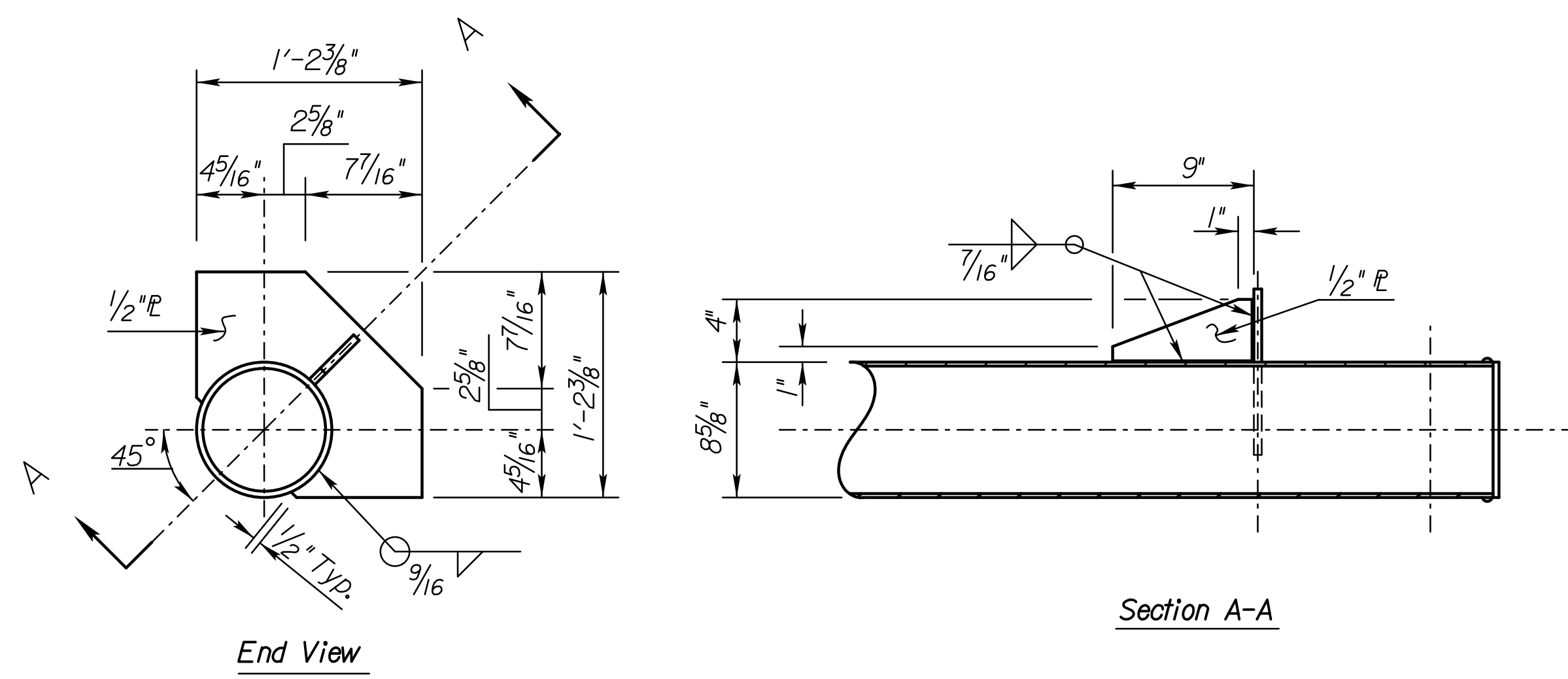
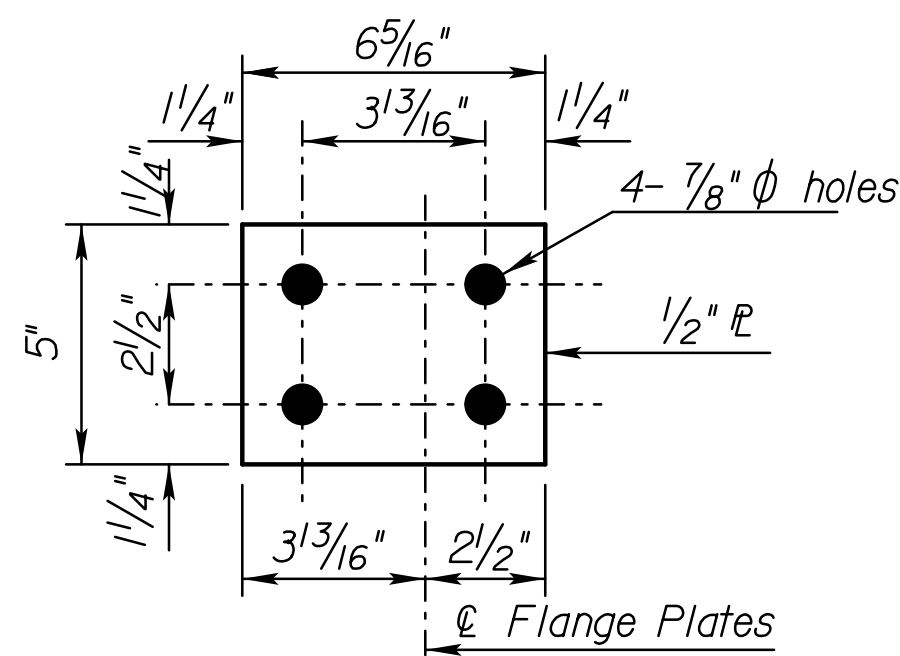


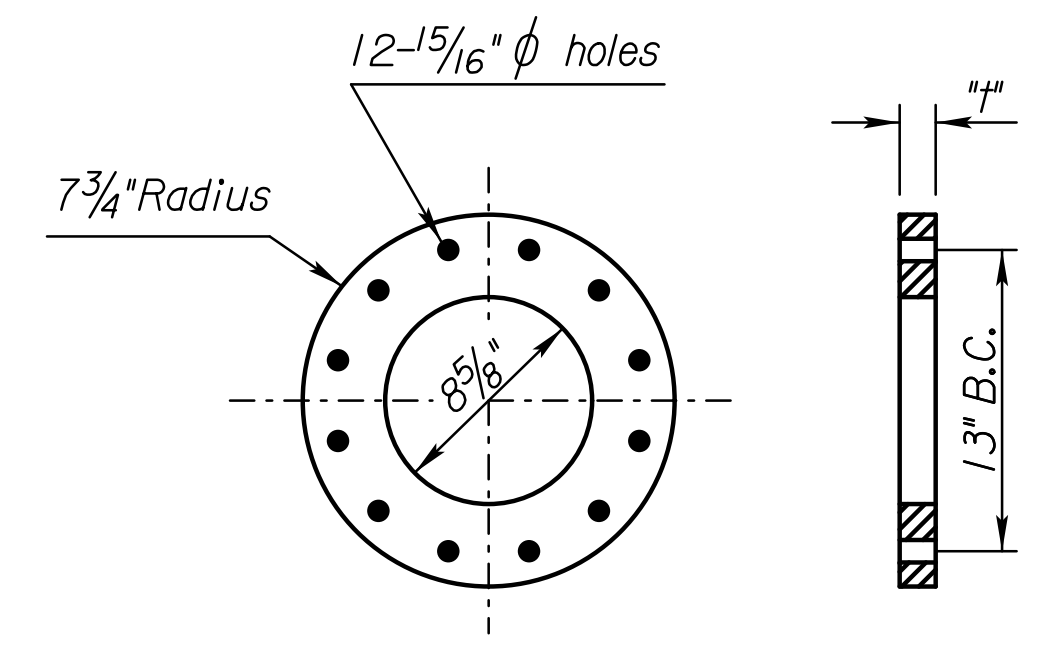
STATE	PROJECT NO.	YEAR	SHEET NO.	TOTAL SHEETS
KANSAS	472-85066	2014	233	388



TYPE I JOINT DETAILS

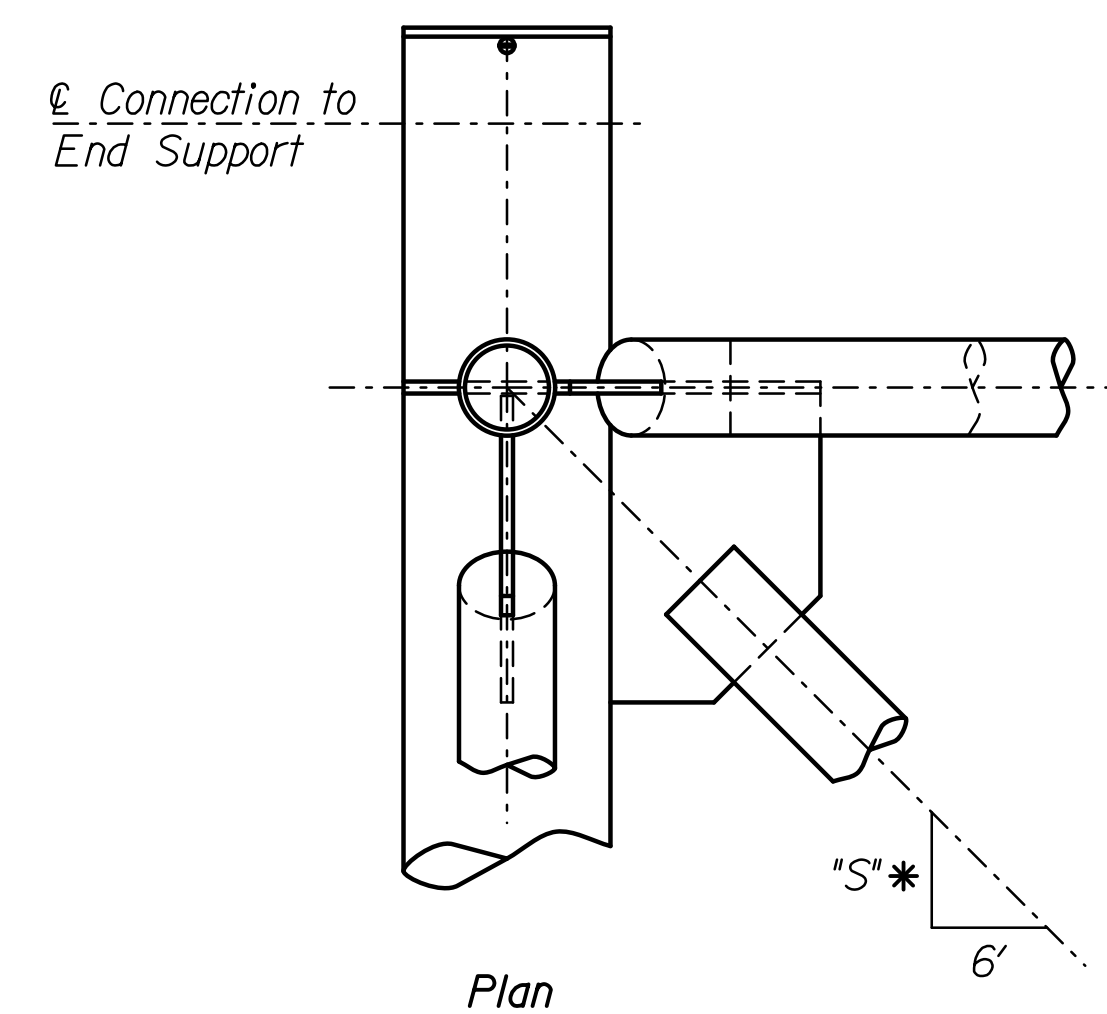


SPLICE PLATE DETAILS

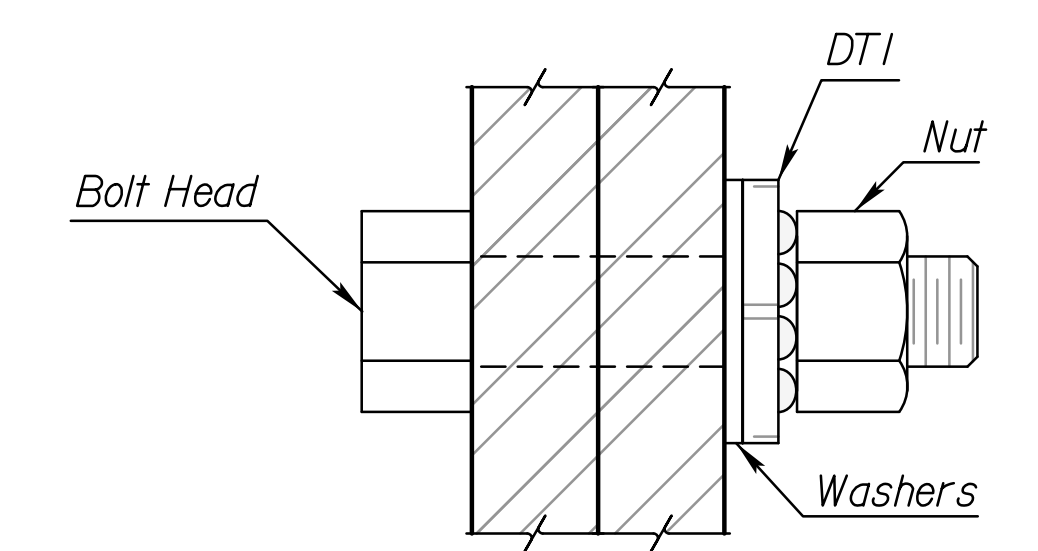


ALTERNATE FLANGE SPLICE PLATE

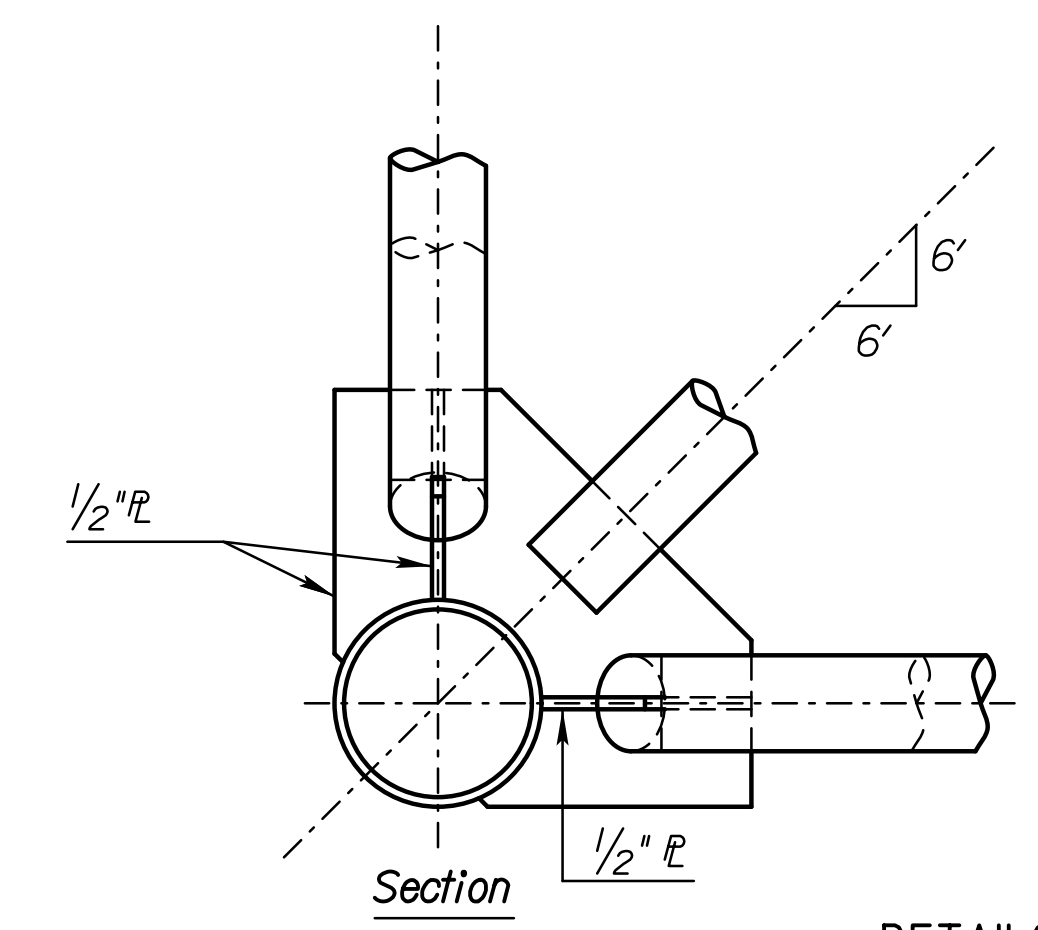
Material: ASTM B209 Alloy 6061-T6



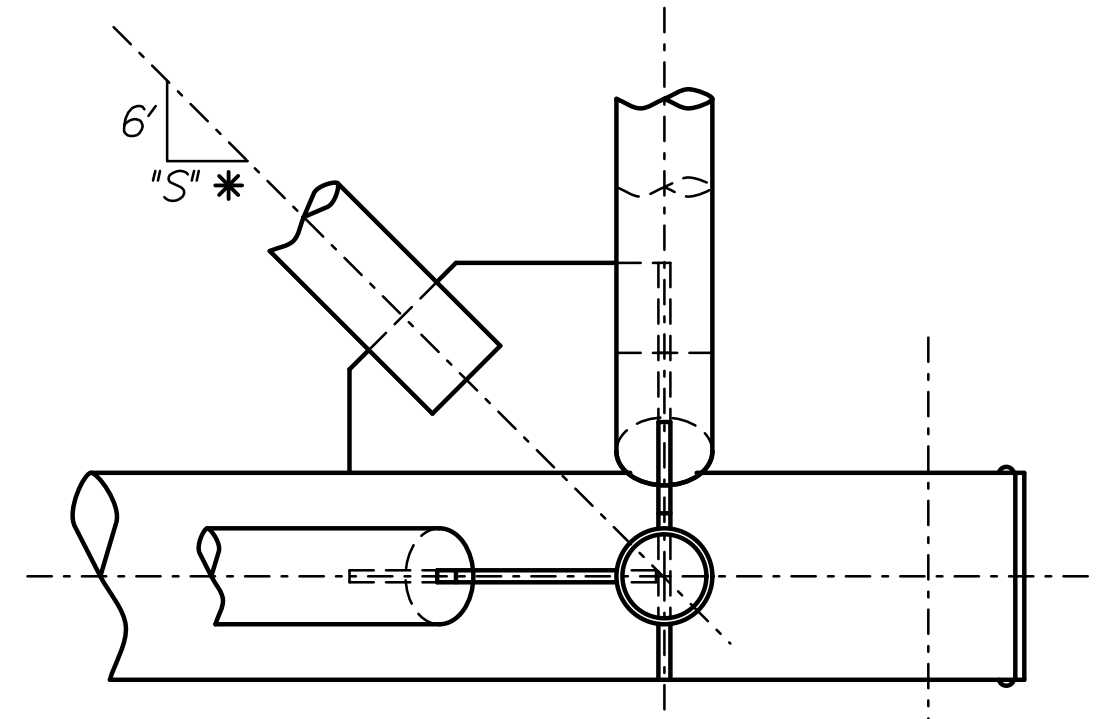
Plan



TYPICAL BOLT AND DIRECT TENSION INDICATOR (DTI)



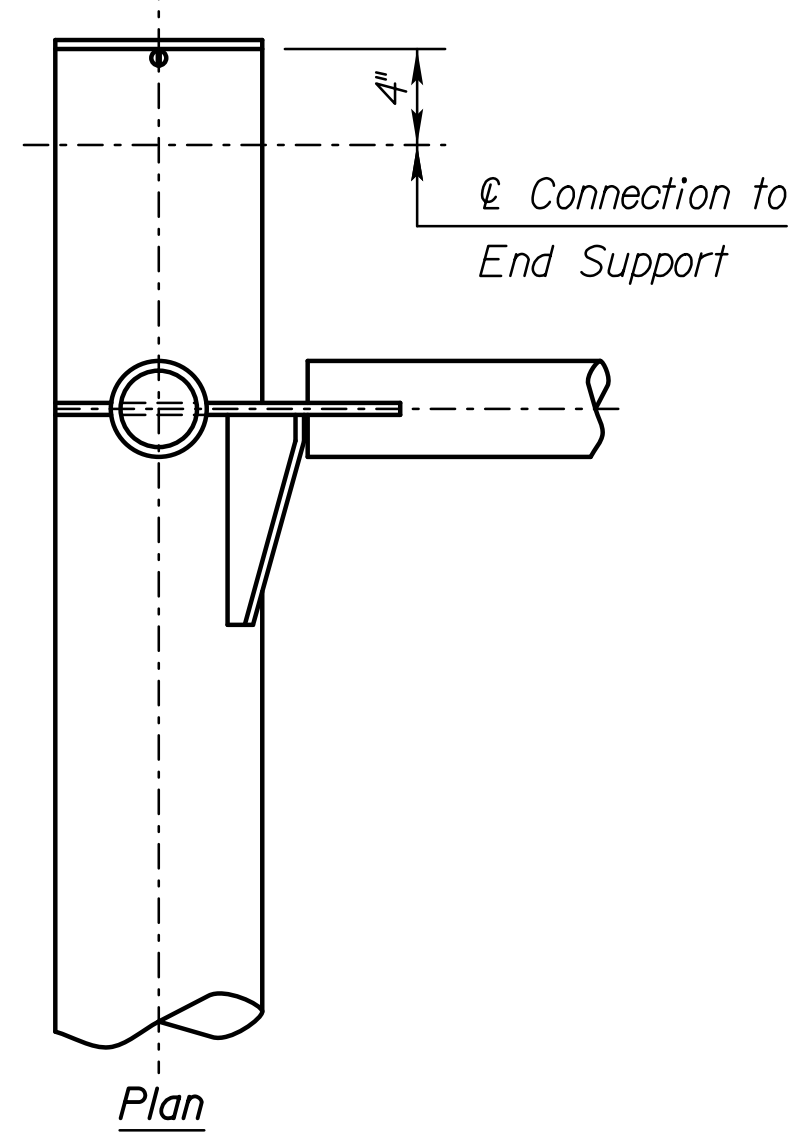
Section



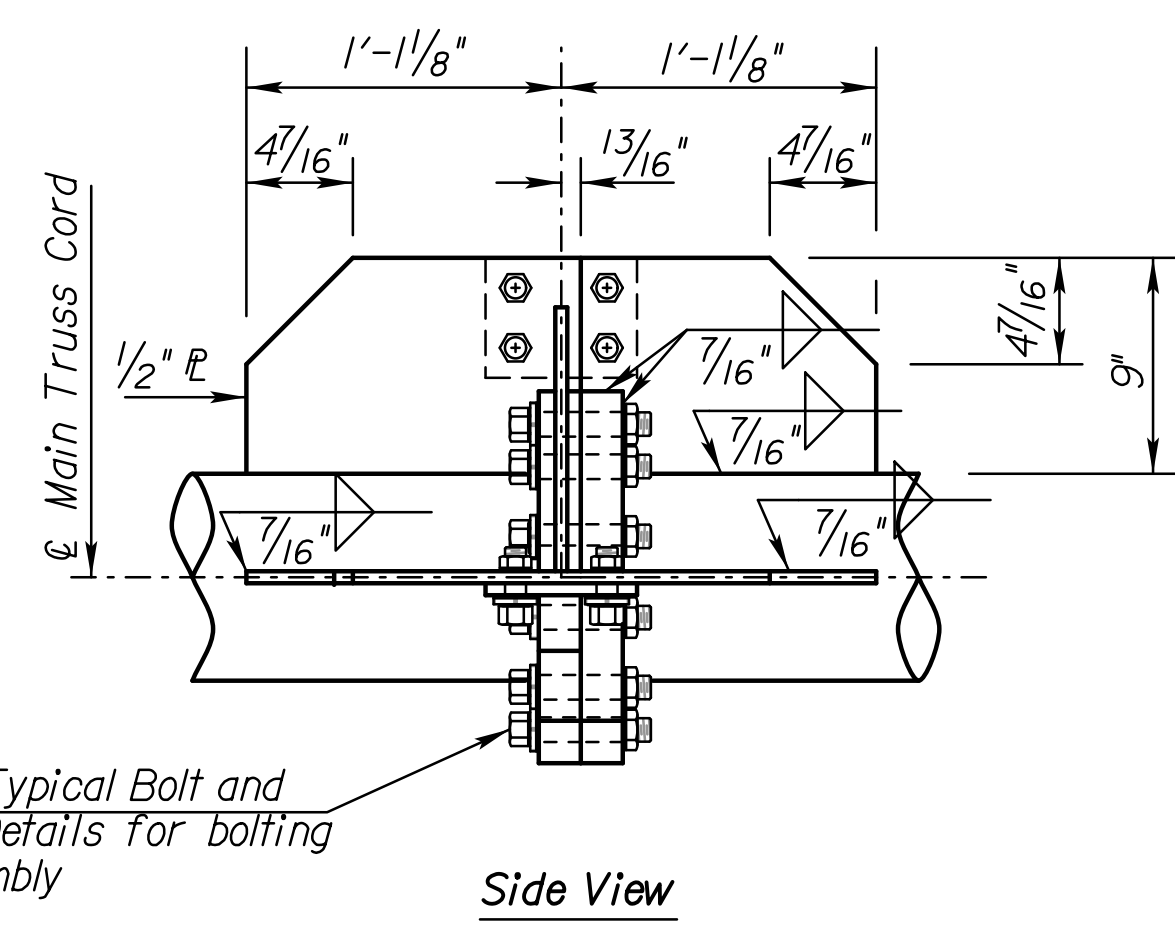
Side Elevation

DETAILS END JOINT TYPE II

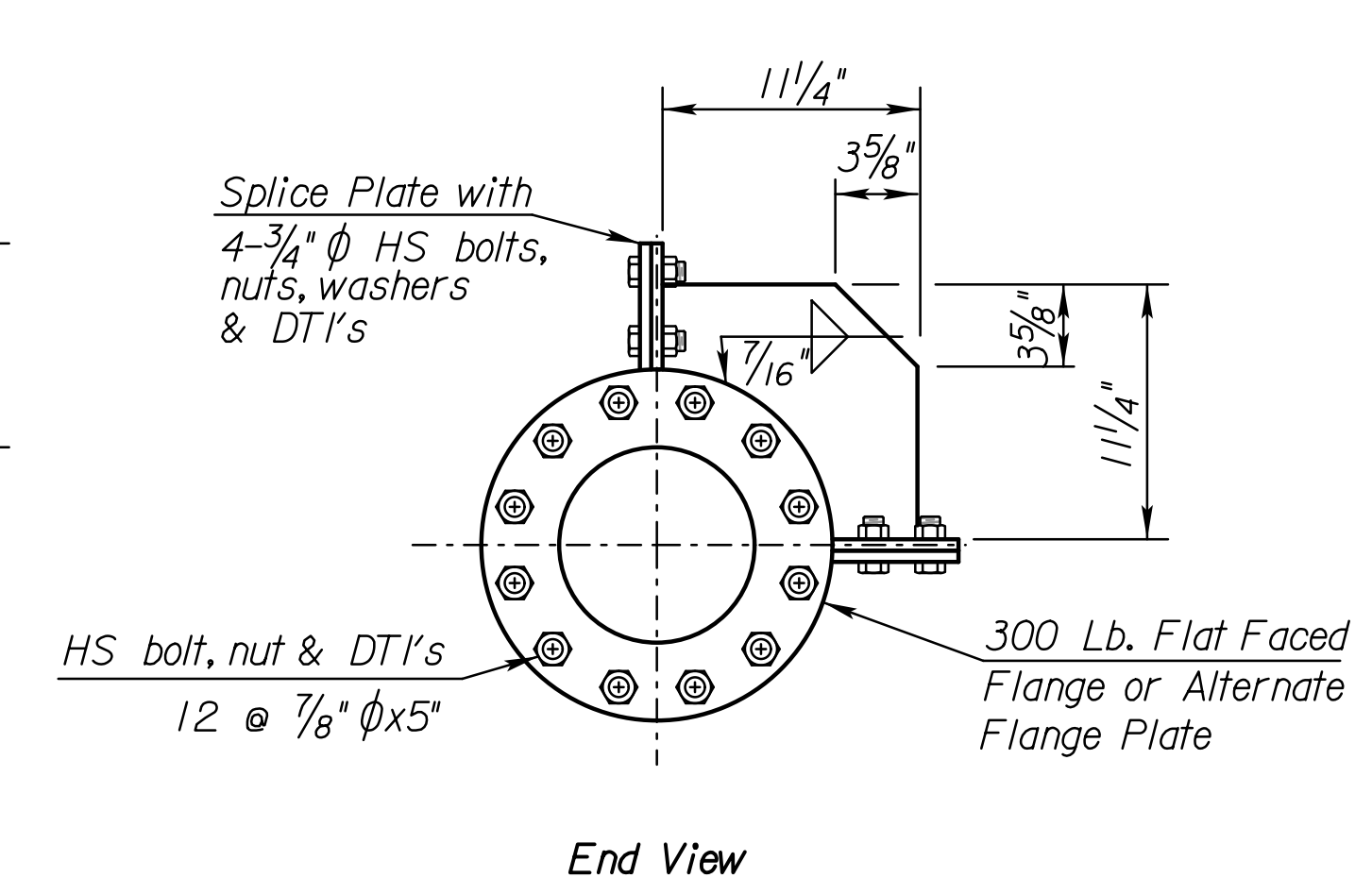
Std. Base File:   
 Plotted By: cp   
 File: A200909521\Overhead Signing - KD07\EN357001\POS16.dgn   
 Plot Date: 30-DEC-2013 16:22



Plan

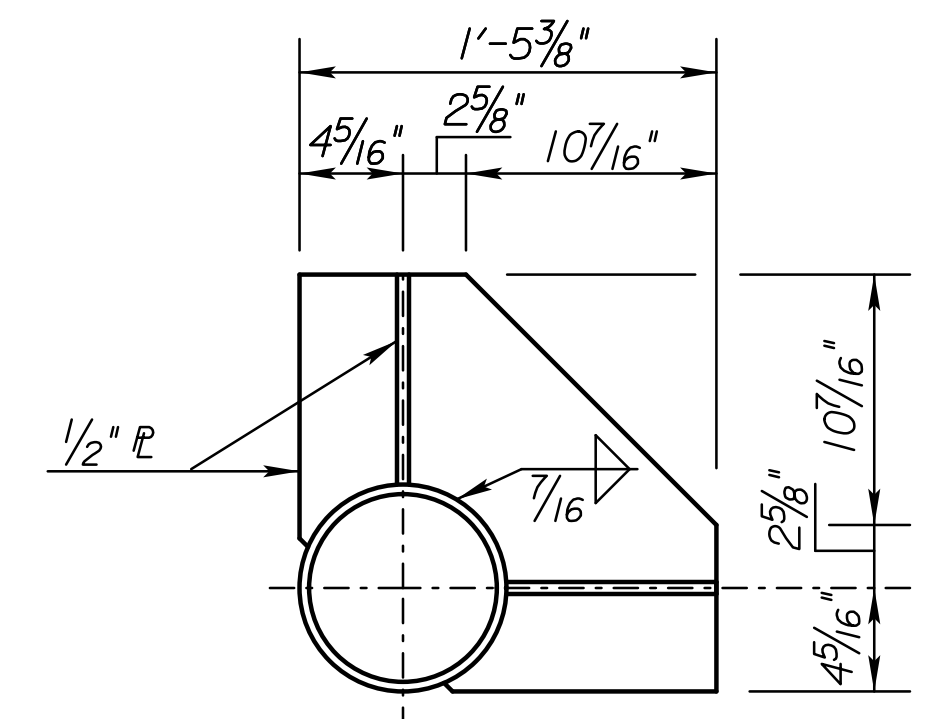


Side View

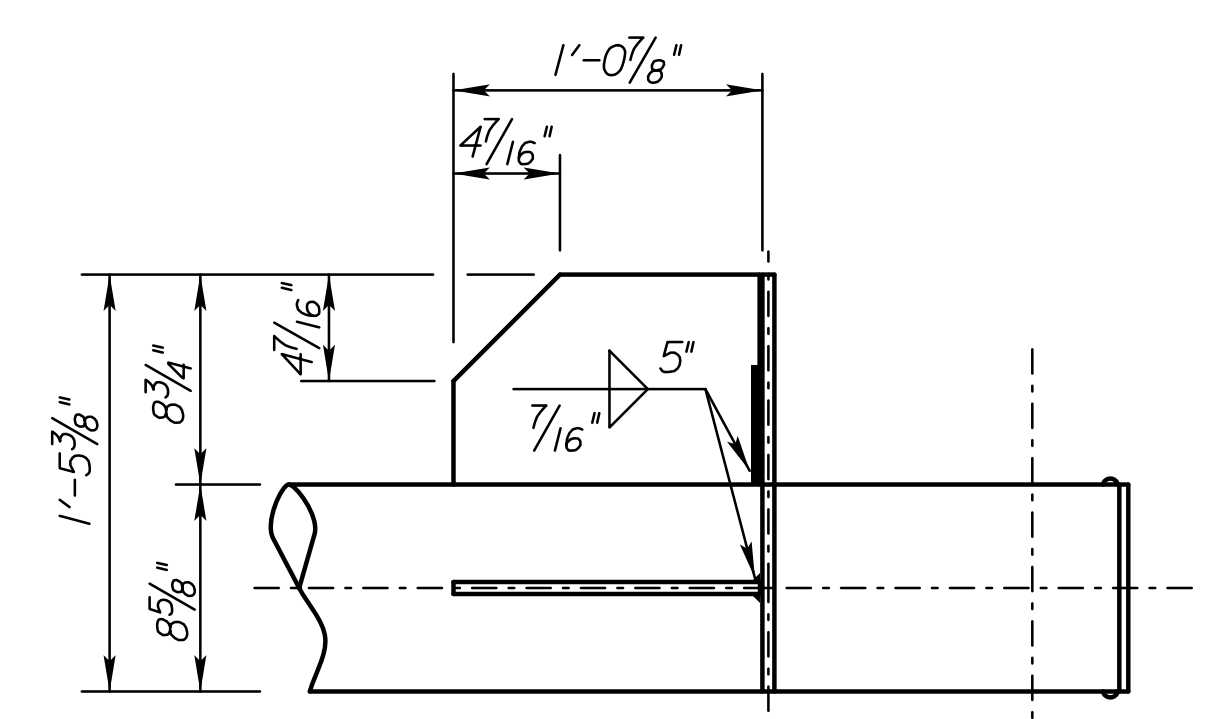


End View

TRUSS SPLICE DETAILS

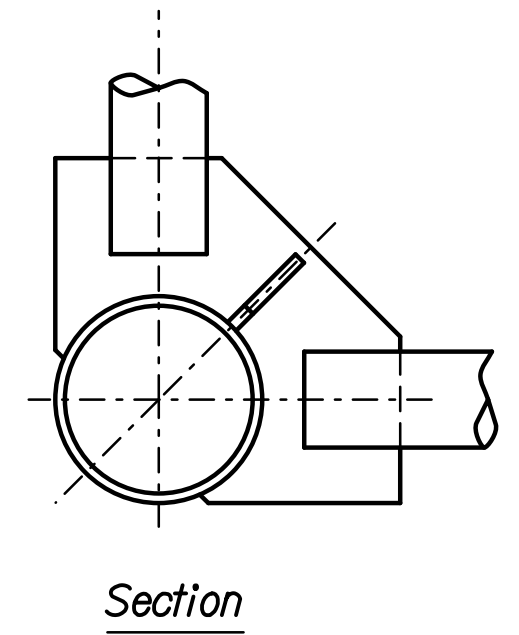


End View

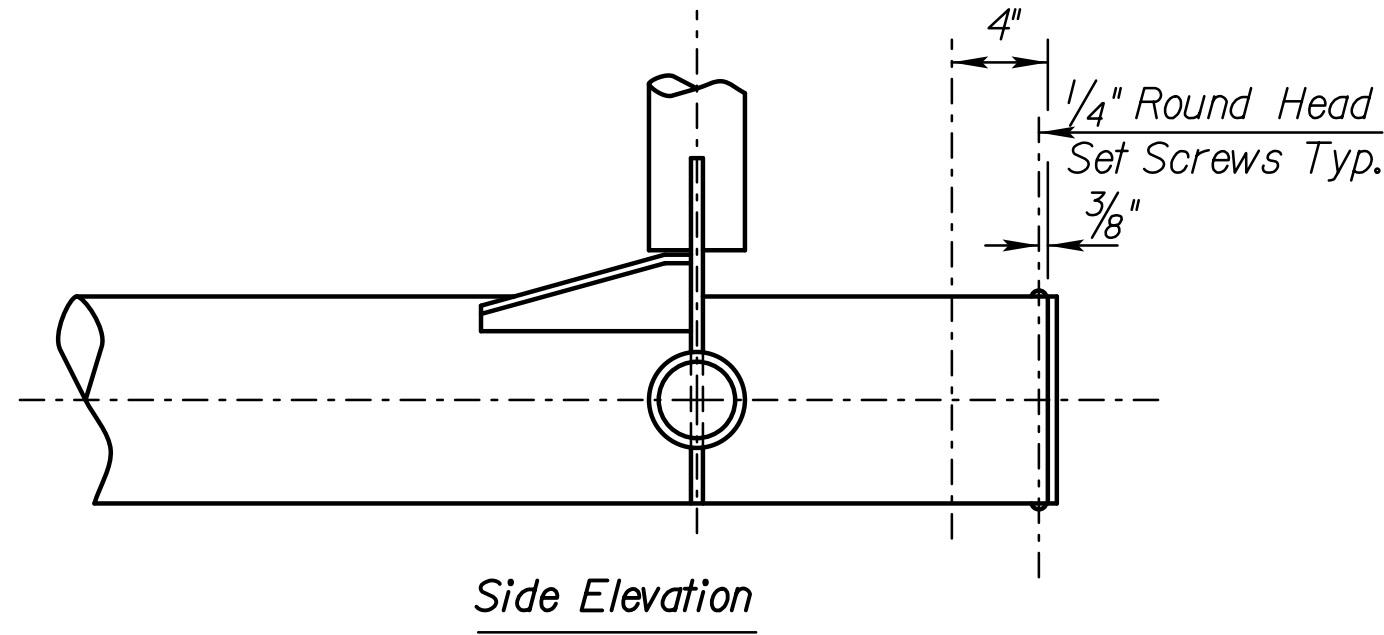


Side View

TYPE II JOINT DETAILS



Section

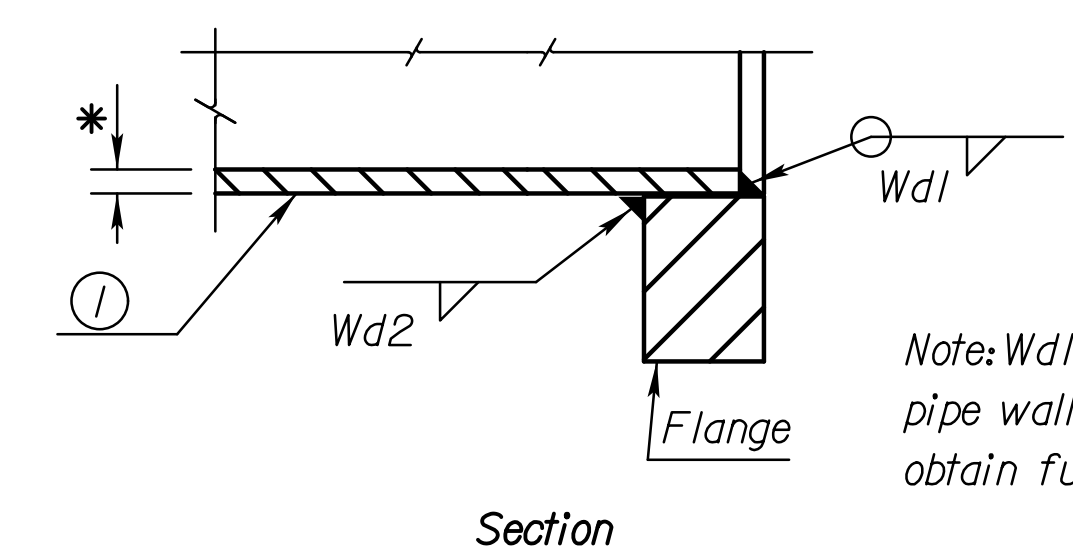


Side Elevation

DETAILS END JOINT TYPE I

Member ① * wall thickness	Fillet Weld size Wd2	Splice R "R"
0.148"	3/16"	1 1/2"
0.250"	5/16"	1 3/4"
0.322"	3/8"	2"
0.406"	7/16"	2 1/4"
0.500"	9/16"	2 1/2"

\* See "Construction Layout" for wall thickness and "S"



Section

Note: Wd1 depth to be equal to pipe wall thickness, build out to obtain full throat.

KANSAS DEPARTMENT OF TRANSPORTATION					
STANDARD STRUCTURAL SIGN SUPPORTS					
SPAN TYPE OVERHEAD					
ALUMINUM TRUSS					
END JOINT & SPLICE DETAILS					
SL151B-04					
NO.	DATE	DTI Notes	REVISIONS	KMP BY	TLF APP'D
DESIGNED	BFM	DETAILED	DRP	QUANTITIES	CADD
DESIGN CK.	RDH	DETAIL CK.	RDH	QUAN. CK.	CADD CK.