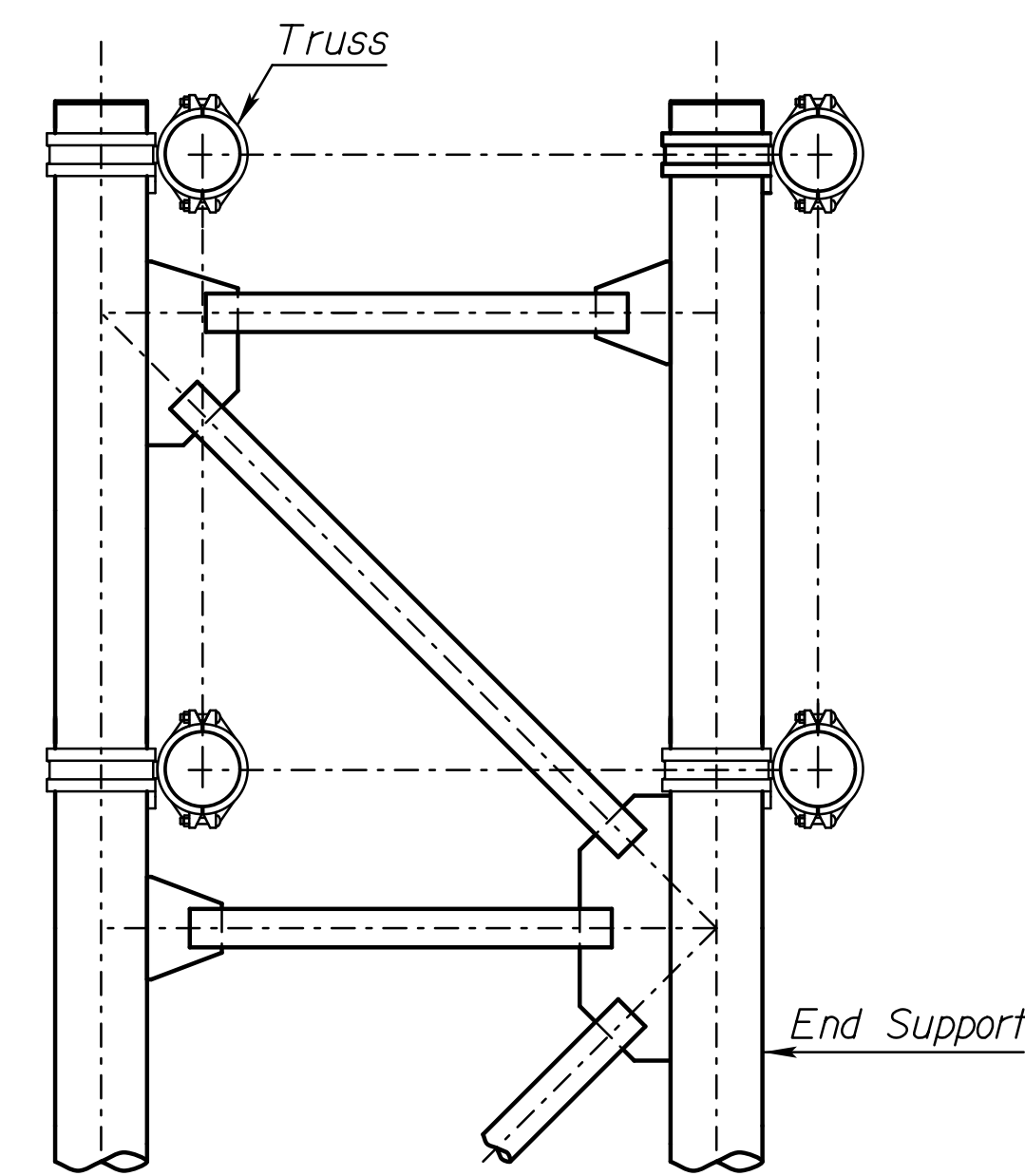


PIPE COUPLING PHYSICAL CHARACTERISTICS

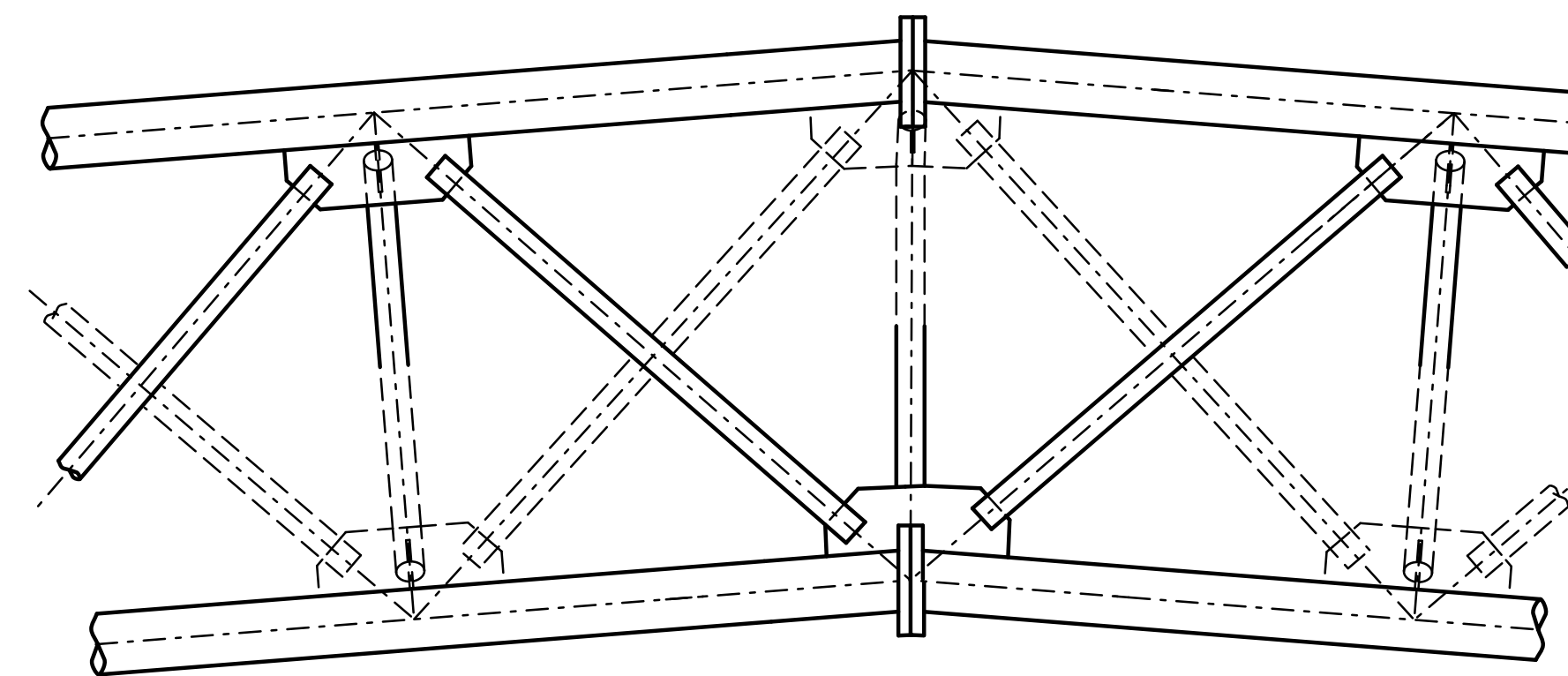
	Pipe Diameter	Coupling Dim.			Coupling Bolts *		Rollers per Coupling	Coupling Weight
		"A"	"B"	"C"	Qty.	size		
Truss	8.625"	14"	5"	10 ⁹ / ₁₆ "	4	7/8"x5"	24	38.0 lbs.
End Support	10.750"	16 ¹ / ₂ "	5"	12 ¹ / ₁₆ "	4	7/8"x5"	32	44.0 lbs.

* Bolts shall be ASTM A183 with Heavy Hex Nuts.

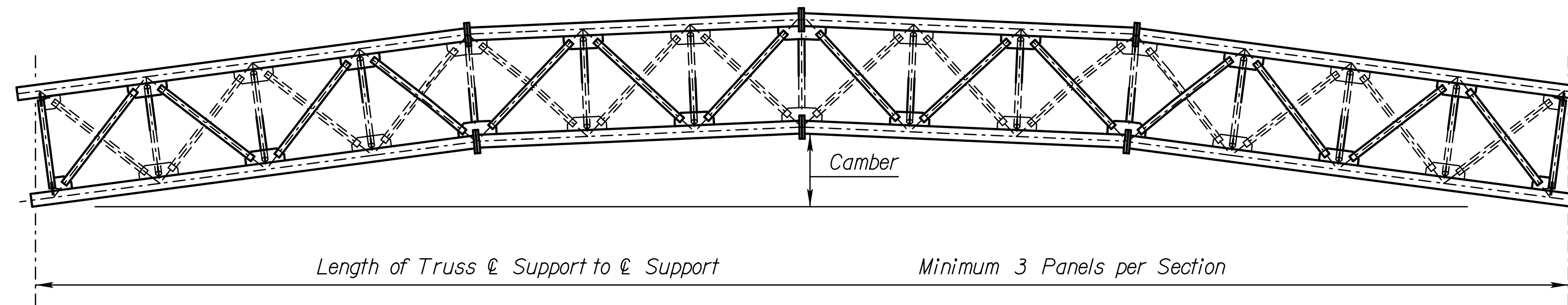
Note: The type of pipe coupling used shall be shown on the shop details submitted for approval.



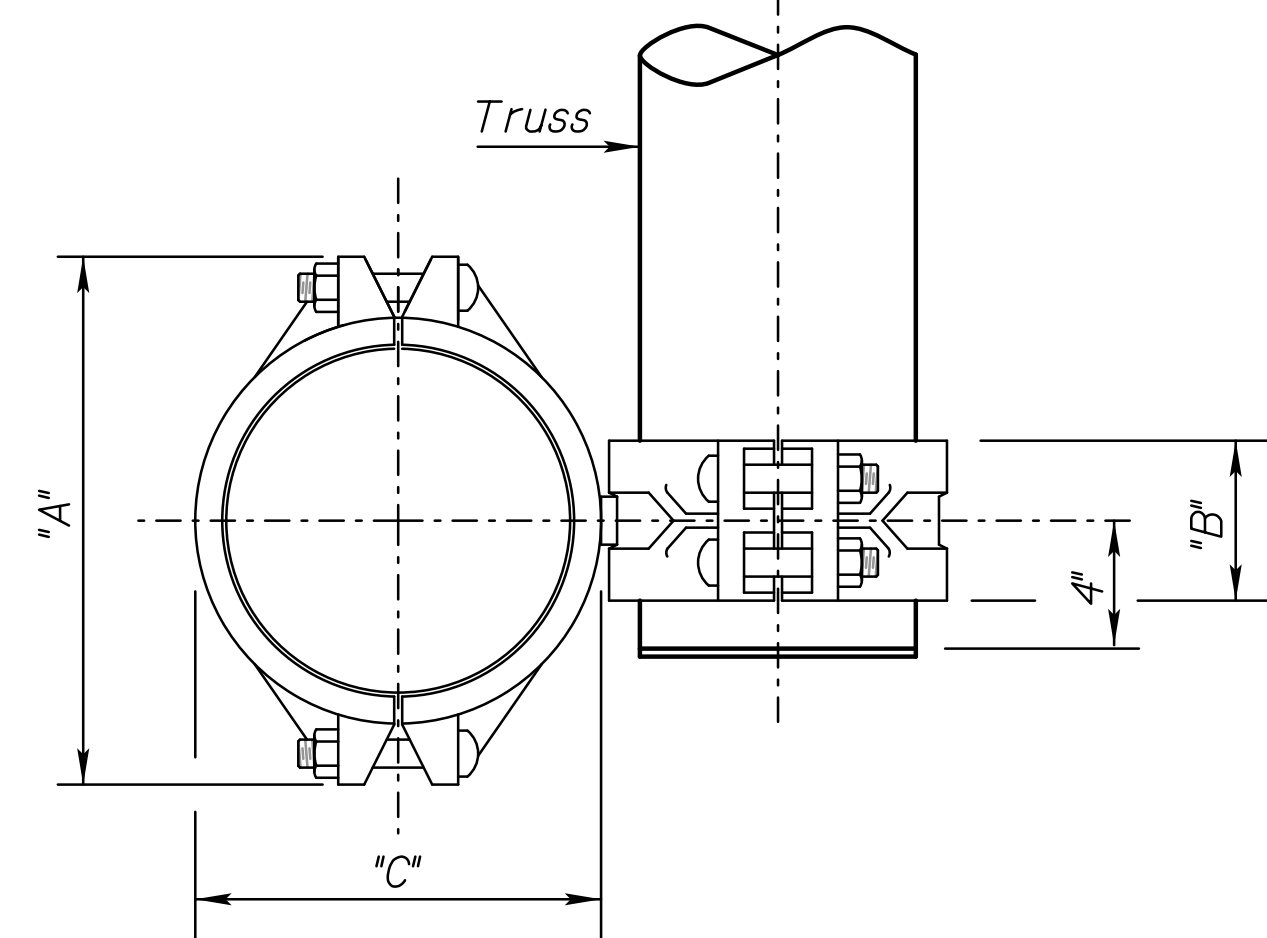
ASSEMBLED CONNECTION END VIEW



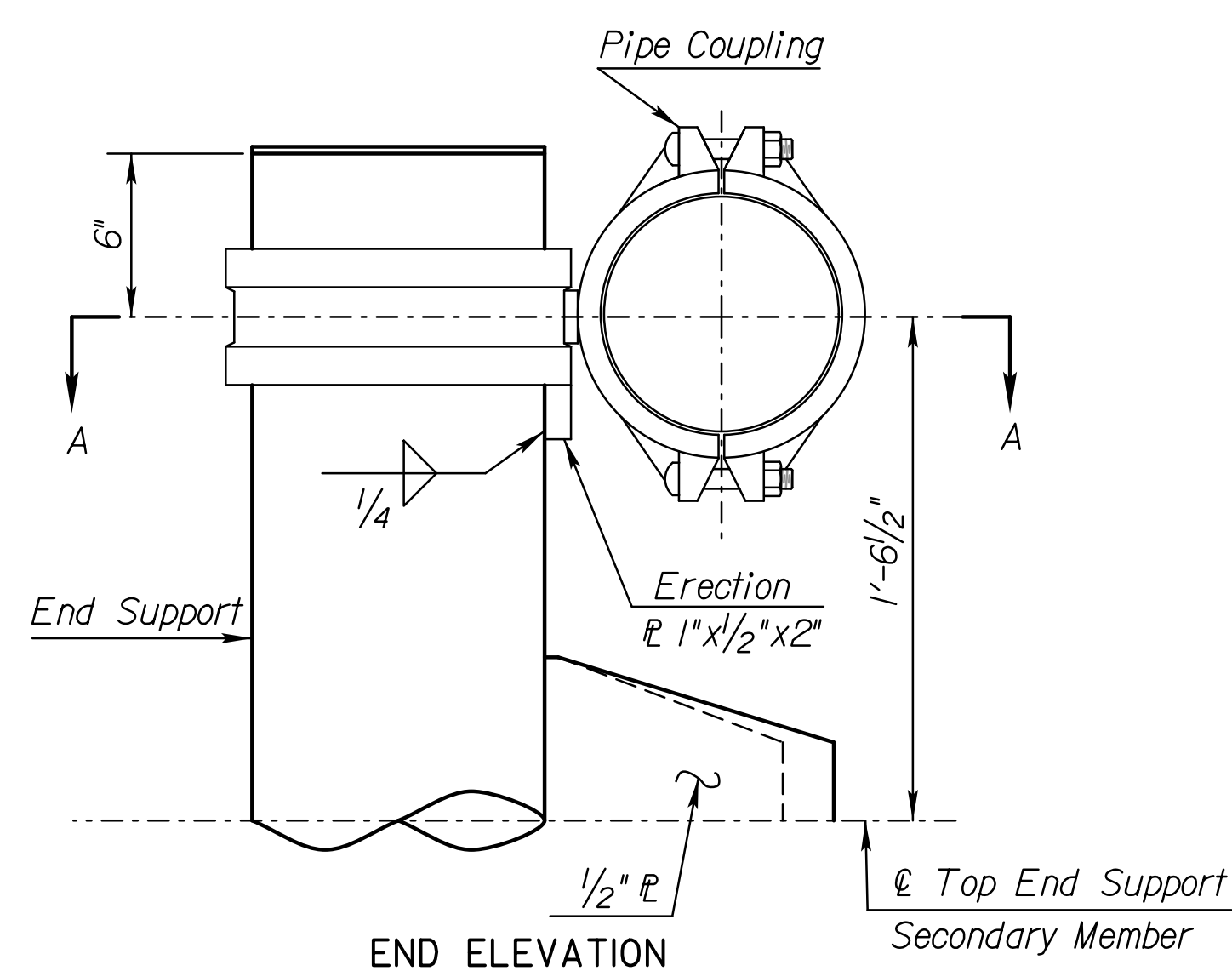
TYPICAL SPLICE
(Showing Camber Method Type 2)



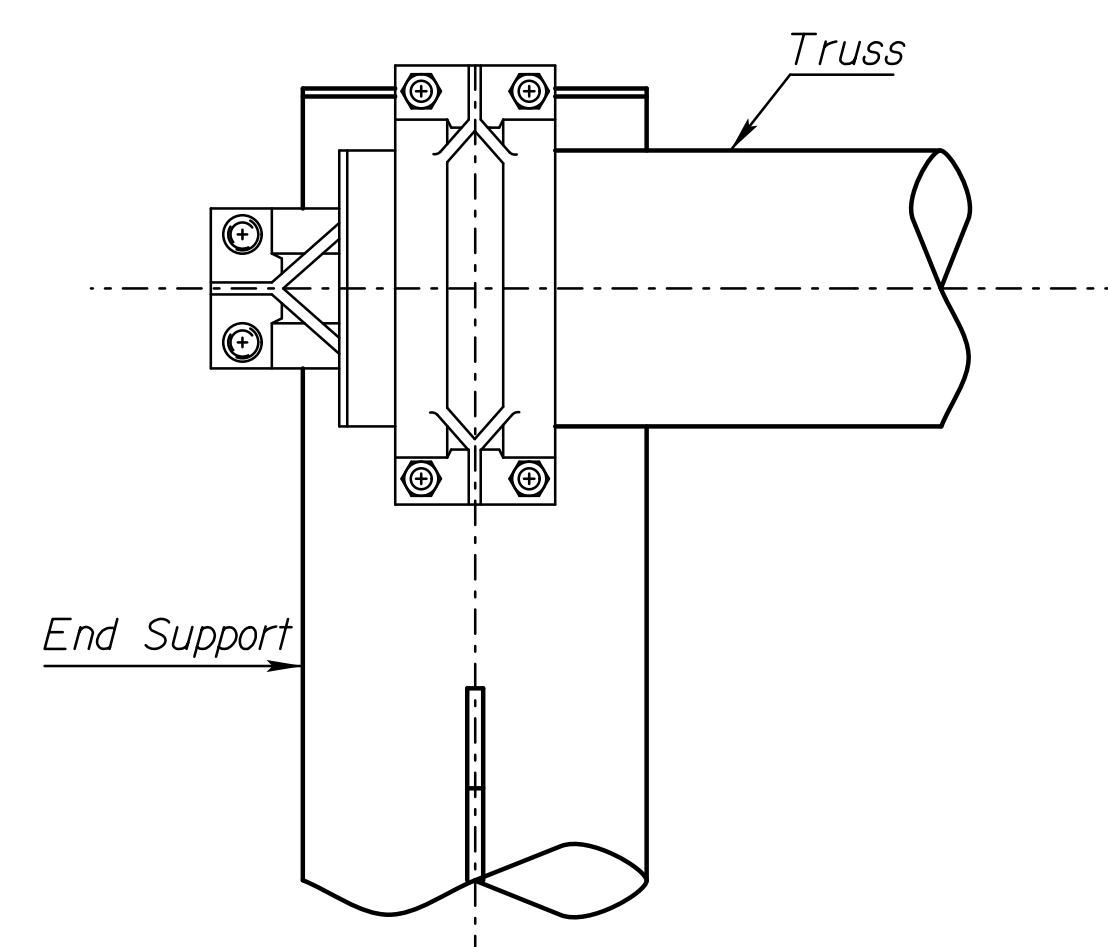
TRUSS CAMBER



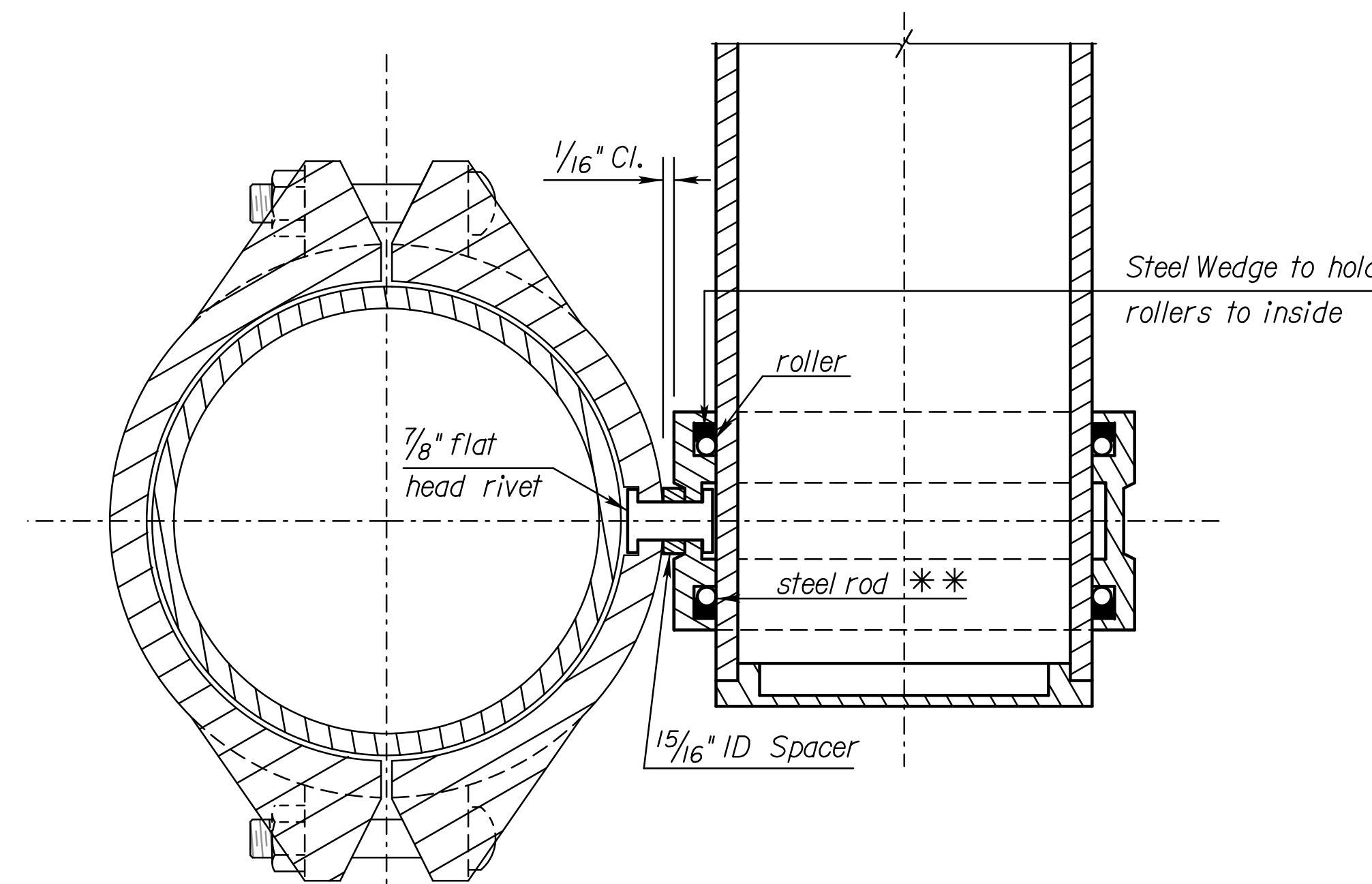
PLAN



END ELEVATION



SIDE ELEVATION



SECTION A-A

** Replace every other factory roller (alternating sides) with a threaded rod. The threaded rod shall be 0.750" (± 0.020) long by 0.5625" (+0.015" or -0.005") outside diameter hardened threaded (18NF Class 1A) 9/16" stainless steel rod (ASTM A320).

GENERAL NOTES

TRUSS TO END SUPPORT CONNECTION: Use cast pipe couplings equipped with serrated rollers, with housings drilled and spot faced for rivet swivel. All factory rollers, not the threaded rods, shall be wedged to the inside edge, as shown, to prevent movement between the coupling and the aluminum tube. The housings shall conform to ASTM A47 grade 32510 or 35018 or to ASTM A536 grade 604510 and shall be galvanized according to ASTM A123. The rivets shall conform to ASTM A502 grade 2.

CAMBER: Camber as given on the "Construction Layout" sheet, shall be placed in the truss by:

- (1) Blocking the truss and then welding at the joints and welding the splice flanges in place.
- (2) Increasing the length of the top truss cords, making sure the splice flanges will be parallel in the field.
- (3) Placing light gage spacer plates on the top splice flanges to obtain an increase in the top truss cord as in (2).

BOLT TORQUE: The torque on the coupling bolts shall be 300 ft.-lbs. using the calibrated wrench method.

Std. Base File: SL151B-06.dgn
 Plotted By: cp
 File: I:\2009\0921\Overhead Signing - KD07\EN35700\POS18.dgn
 Plot Date: 30-DEC-2013 16:22

NO.	DATE	REVISIONS	BY	APP'D
KANSAS DEPARTMENT OF TRANSPORTATION				
STANDARD STRUCTURAL SIGN SUPPORTS SPAN TYPE OVERHEAD ALUMINUM TRUSS TRUSS TO END SUPPORT CONNECTION AND CAMBER DETAILS				
SL151B-06				
DESIGNED	BFM	DETAILED	DDP	QUANTITIES
DESIGN CK.	RDH	DETAIL CK.	RDH	QUAN. CK.
FHWA APPROVAL			8-17-93	APP'D
			Terry L. Flock	
		CADD	DJE	
		CADD CK.	LES	