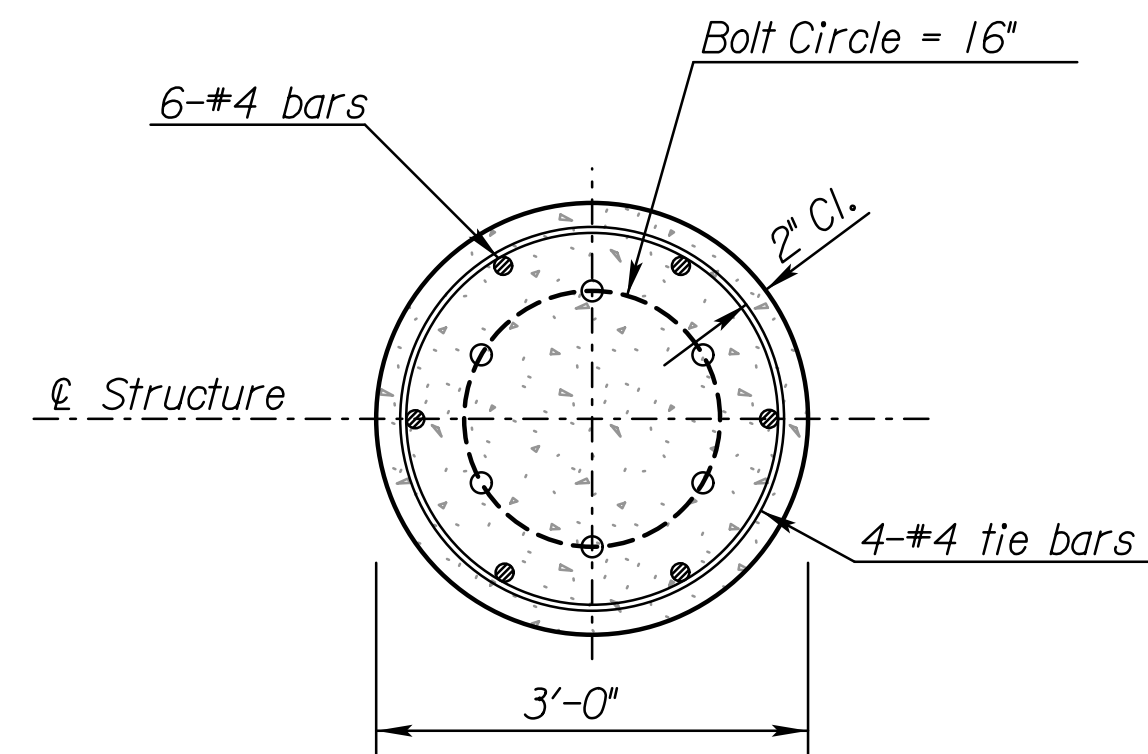
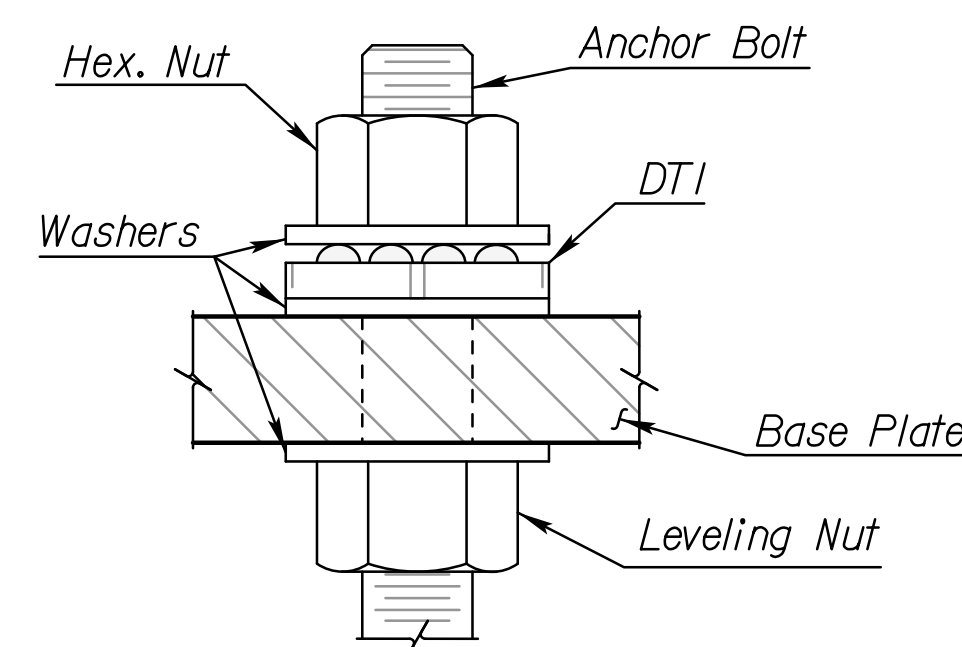


STATE	PROJECT NO.	YEAR	SHEET NO.	TOTAL SHEETS
KANSAS	472-85066	2014	245	388



SECTION THRU FOOTING

DTI Proof Load (Kips)	Anchor Bolt Size
60	1 3/4"



TYPICAL ANCHOR BOLT AND DIRECT TENSION INDICATOR (DTI)

GENERAL NOTES

DESIGN: The single tapered tube span type overhead sign structure shall conform to the requirements of the "AASHTO Standard Specifications for Structural Supports for Highway Signs, Luminaires and Traffic Signals" 2009 edition with current interims.

EXCAVATION: Excavate and cast footing to neat lines except top 1'-0" +/- which shall be formed. Top 1'-0" +/- may be formed 3'-0" square or 3'-0" in diameter. Immediately before placing any concrete, the Contractor shall remove all loose material from the bottom of the hole. All soil used for backfilling around the top of the footing shall be thoroughly compacted as it is placed. All excess excavation shall be disposed of as approved by the Engineer.

SINGLE TAPERED TUBE SPAN SIGN SUPPORT: Poles and beams shall conform to sub-section 1600 of the 2007 "Standard Specifications for State Road and Bridge Construction". The poles and beams shall be tapered tubes made only of one length of steel sheet, of not less than #7 Manufacturing Standard Gauge, whose yield strength is a minimum of 55,000 psi. Only one longitudinal weld, and no transverse welds, shall be permitted in the fabrication of the poles and beams. The steel anchor base of adequate strength, shape and size shall be secured to the lower end of the pole by welding in such manner as to develop the full strength of the adjacent pole to resist bending action. The beam shall be connected to the poles by pinned joints which cannot transmit any bending moments. The beam shall be cambered as necessary. All parts of the sign support structure shall be galvanized to the requirements of ASTM A123. The pole shall include a handhole and cover unless grounded externally and a pole cap. The beam shall include all necessary sign beams, clamps and bolts needed to mount the signs. The Contractor shall submit shop details indicating pole and beam dimensions, connection details and the details of the sign mounting device.

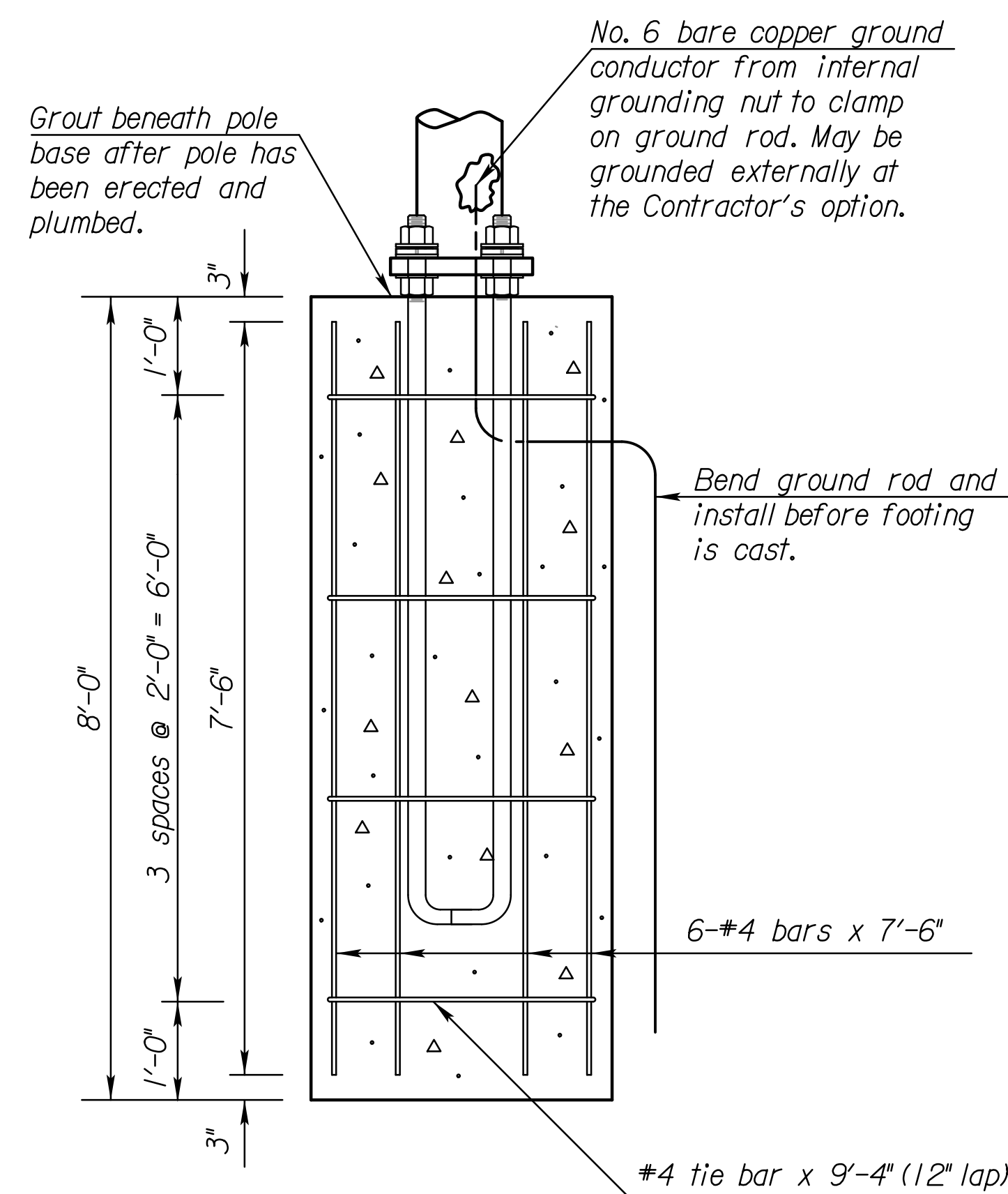
ANCHOR BOLTS: Anchor bolts will adhere to KDOT Standard Specification Section 1600 (Grade 55) with the following exception: cut threads are not permitted. Welding shall conform to the "Standard Specifications for State Road and Bridge Construction and the latest edition of the American Welding Society.

FOOTING MATERIALS: The concrete shall be Grade 4.0 or better. The reinforcing steel shall conform to ASTM A615 Grade 60.

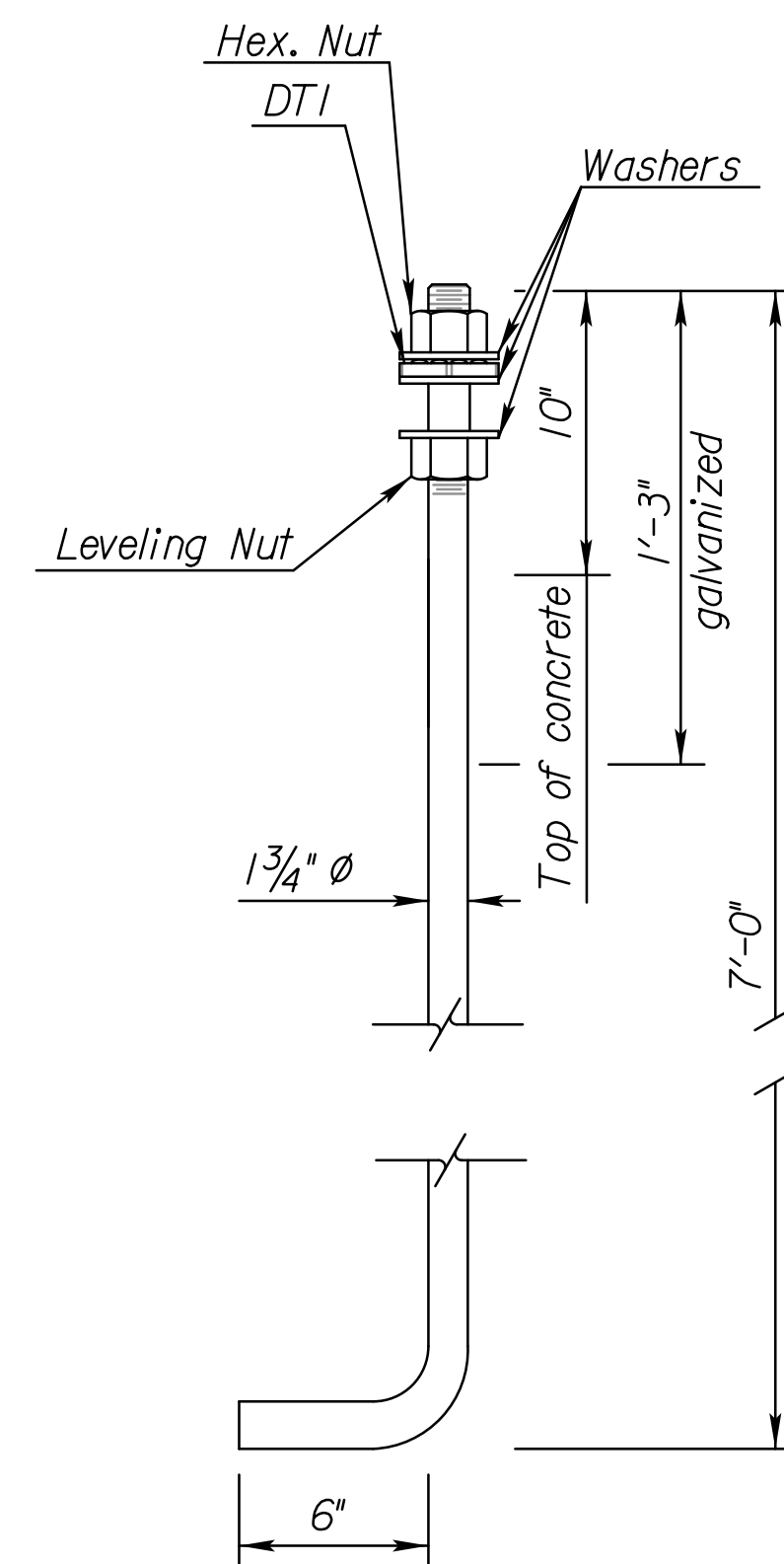
PAYMENT: The bid item "Single Tapered Tube Span Sign Support" per each shall be full compensation for the complete sign support and footing less the sign panels.

DIRECT TENSION INDICATORS: DTIs are to comply with the requirements of the latest edition of ASTM F2437 and provide proof load shown in the table. Installation will adhere to the KDOT Standard Specifications.

STRENGTH: The curing time shall be a minimum of 15 days or until a test cylinder achieves a compressive strength of 4.0 ksi or greater.



ELEVATION OF FOOTING



ANCHOR BOLT
(4 per pole Grade 55)

Std. Base File: SLI55.dgn
 Plotted By: ap
 File: A:\2009\0952\Overhead Signing - KDOT\EN35700\POS29.dgn
 Plot Date: 31-DEC-2013 11:27

2	2/06/13	Added washer to DTI	KMP	TLF
1	5/1/11	Updated notes and added DTI info	KMP	TLF
NO.	DATE	REVISIONS	BY	APP'D

KANSAS DEPARTMENT OF TRANSPORTATION
 SINGLE TAPERED TUBE SPAN TYPE
 OVERHEAD SIGN STRUCTURE
 DETAILS

SLI55	6-9-2011	APP'D	Terry L Fleck
DESIGNED	LES	DETAILED	LES
QUANTITIES	CADD	DESIGN CK.	DCD
DETAIL CK.	DCD	QUAN. CK.	CADD CK.