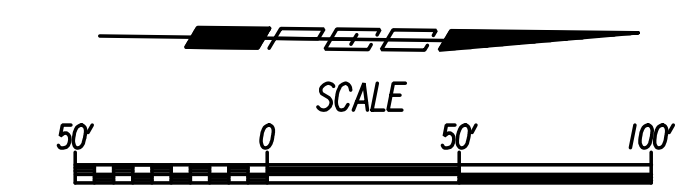
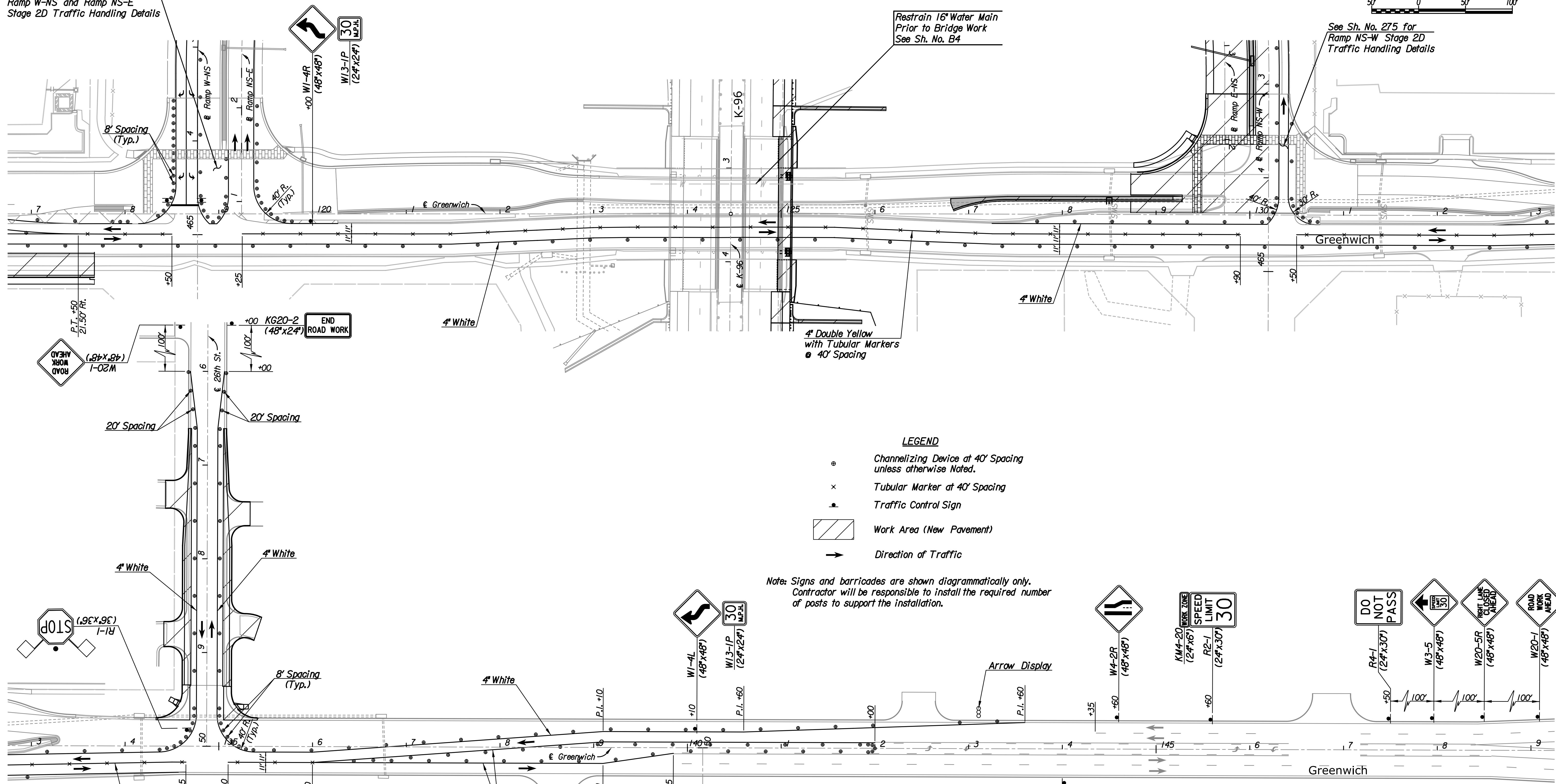


Plotted By: svb Date: 1/2/2014 8:52:46 AM  
 FILE: I:\2009\0952\Traffic Control\0952-TC Greenwich Stage 2D Sta I17.dgn

See Sh. No. 273 for  
 Ramp W-NS and Ramp NS-E  
 Stage 2D Traffic Handling Details



See Sh. No. 275 for  
 Ramp NS-W Stage 2D  
 Traffic Handling Details



**LEGEND**

- Channelizing Device at 40' Spacing unless otherwise Noted.
- × Tubular Marker at 40' Spacing
- Traffic Control Sign
- ▨ Work Area (New Pavement)
- Direction of Traffic

Note: Signs and barricades are shown diagrammatically only.  
 Contractor will be responsible to install the required number of posts to support the installation.

Note: Utilities are not shown on Traffic Control Plans. The Contractor is responsible for verification as to type and location of underground utilities as may be necessary to avoid damage thereto. The Contractor is responsible for repairing any damage to underground utilities.

Revision		By		Date	
K-96 AND GREENWICH ROAD					
<b>TRAFFIC CONTROL PLAN</b>					
STAGE 2D - STA. I17+00 TO STA. I48+00					
GARY JANZEN, P.E.-CITY ENGINEER CITY OF WICHITA PROJECT NO. 472-85066					
<b>PEC</b> PROFESSIONAL ENGINEERING CONSULTANTS, P.A. 303 SOUTH TOPEKA WICHITA, KS 67202 316-262-2691 www.pec1.com					
Designed by	JPS	Job No.	09521		
Drawn by	SVB	Date	Jan., 2014	Sht. 276 of 388	