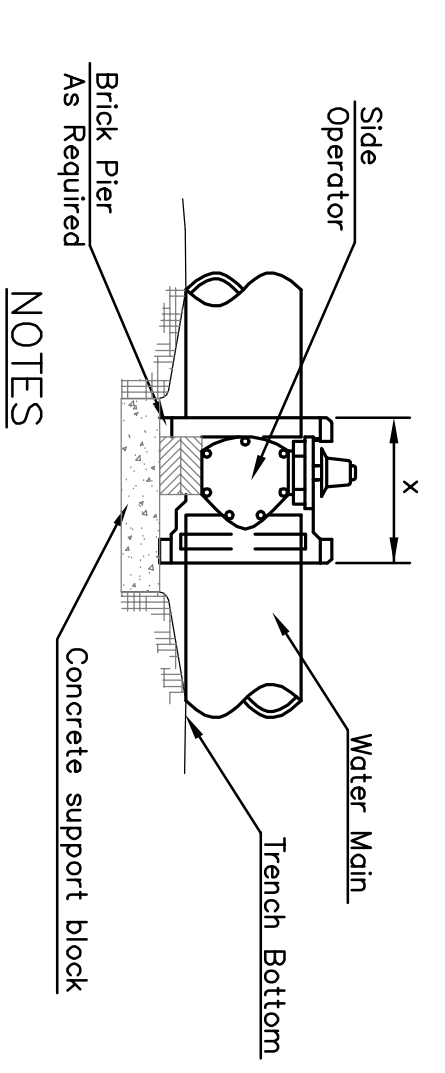


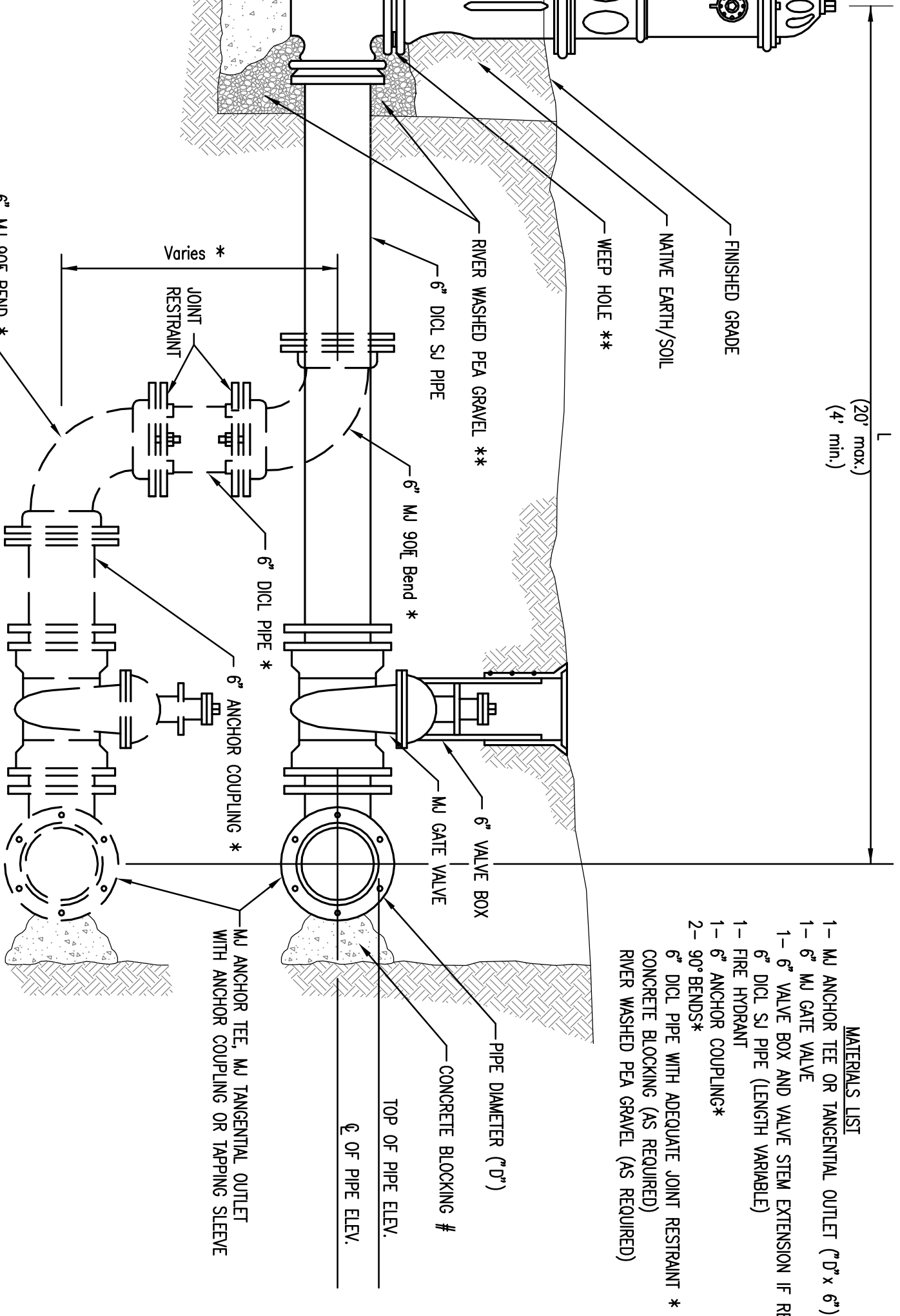
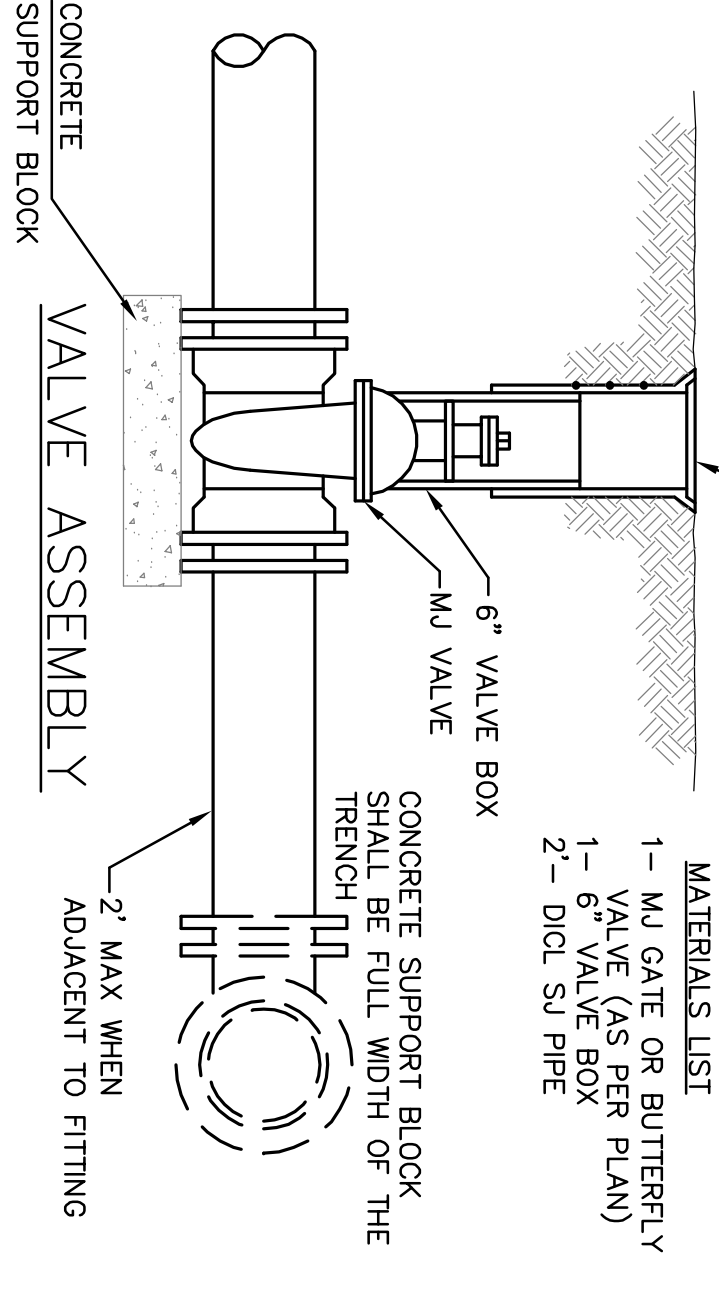
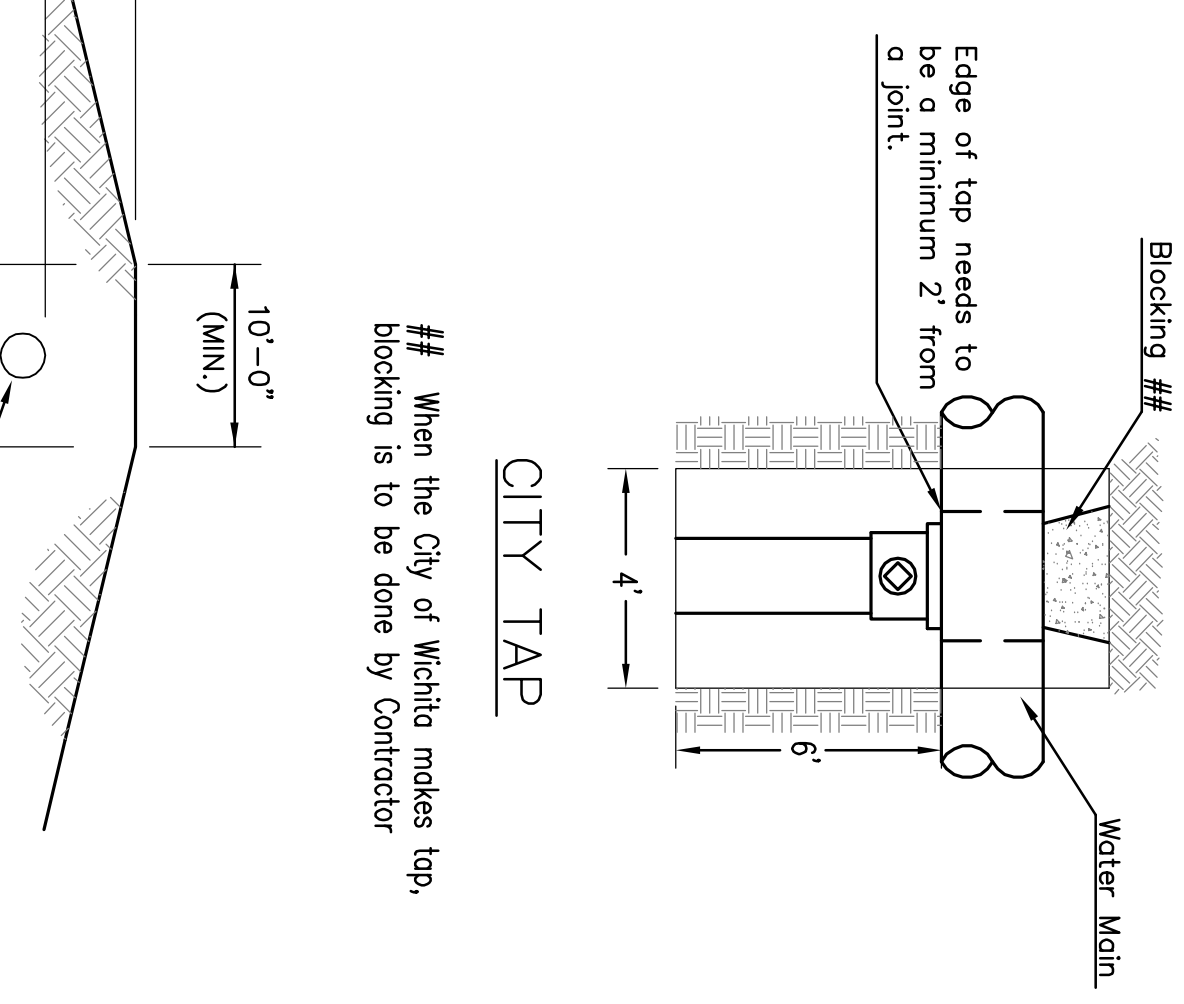


FIRE HYDRANTS REQUIRED				
STATION	BURY LINE ELEVATION	TOP OF PIPE ELEVATION	FIRE HYDRANT* ELEVATION	VALVE STEM EXT. REQUIRED (ft)*

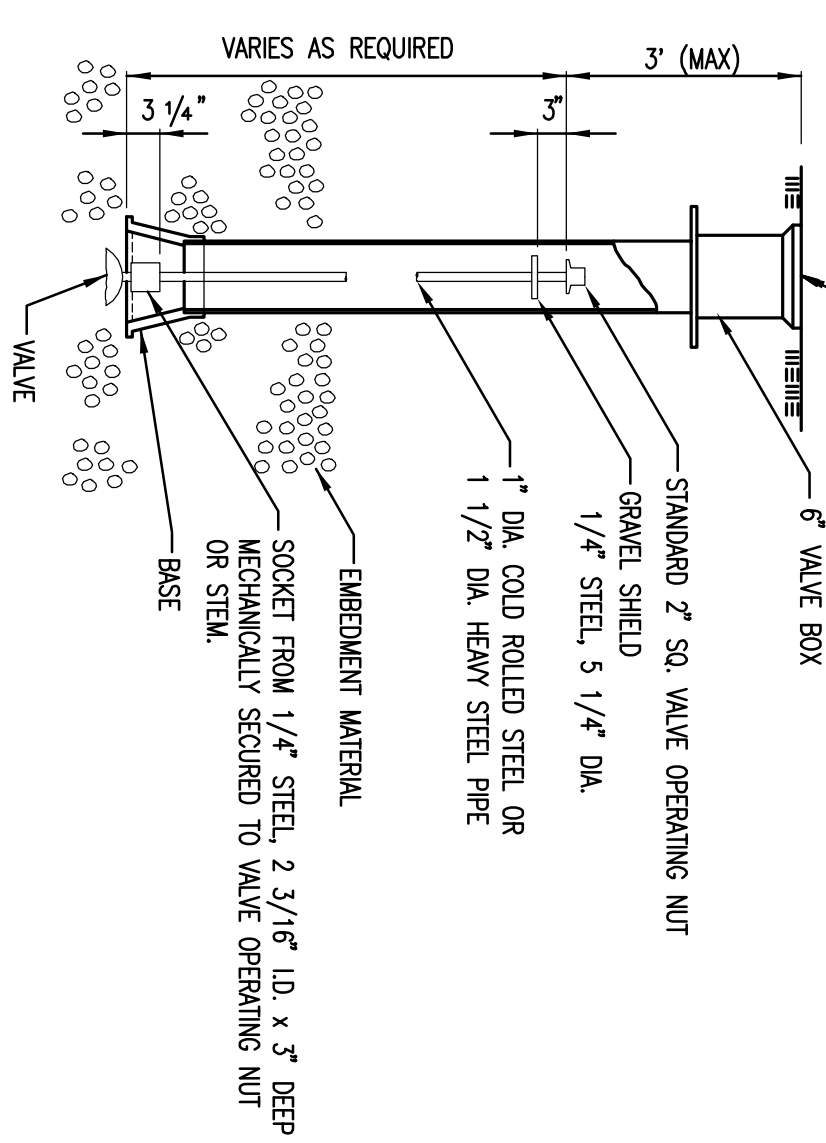


- NOTES**
1. This detail covers Butterfly Valve installation, inclusive, regardless of type of pipe or joint used. 24" and larger lines to be detailed on plans.
  2. Valve Box and Cover required per City of Wichita Std. Specifications.
  3. Conc. Support Block to be full width of trench.

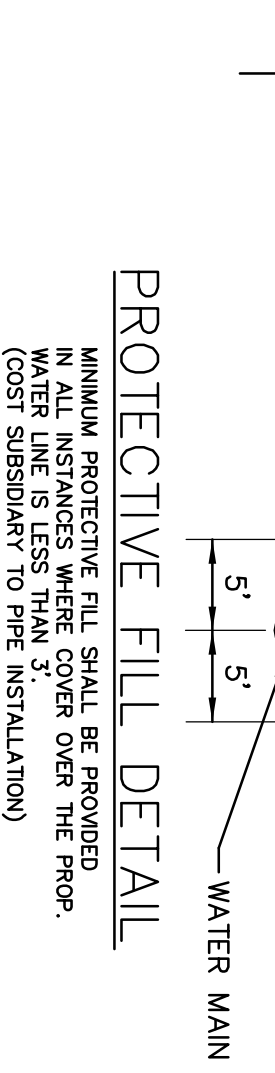
**CONCRETE SUPPORT BLOCKING FOR BUTTERFLY VALVE INSTALLATION**



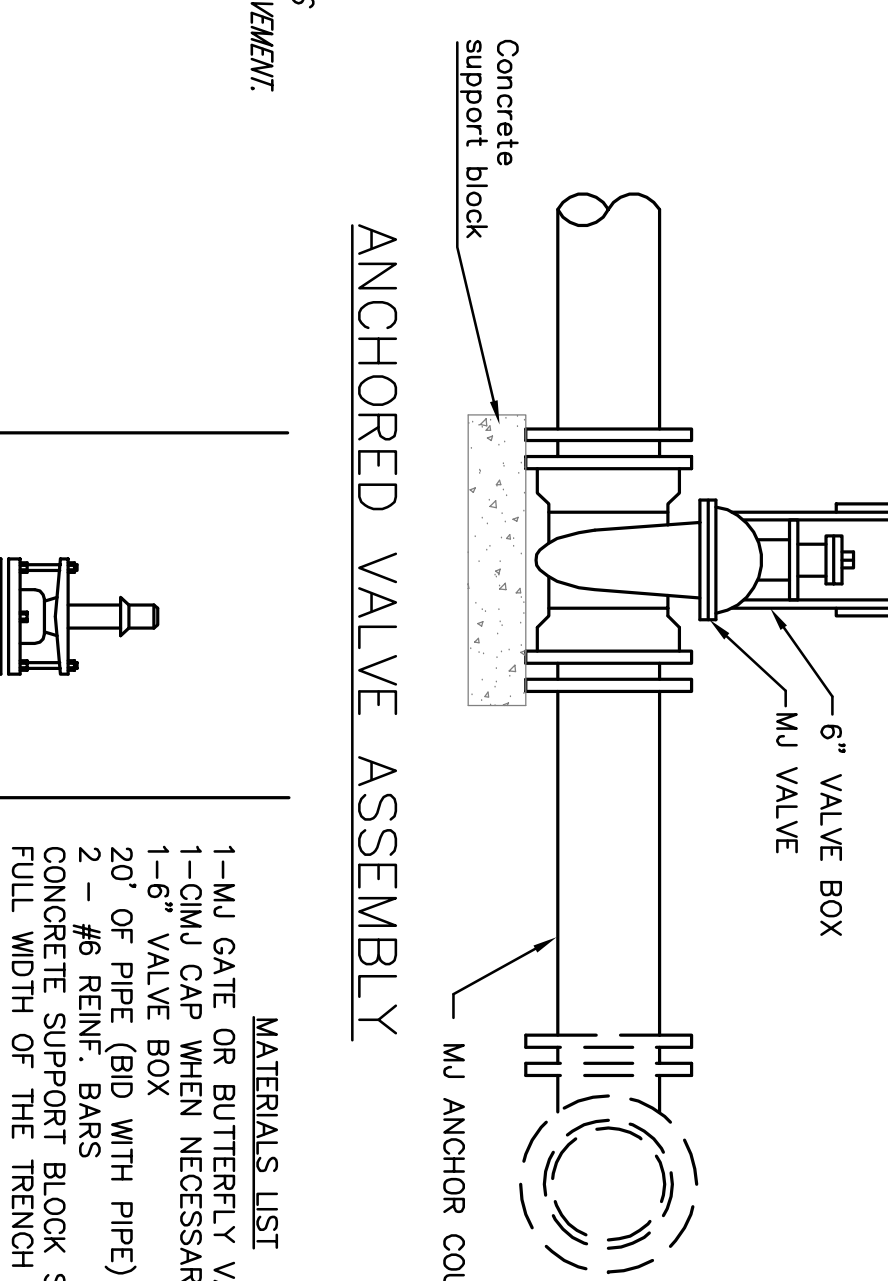
**VALVE STEM EXTENSION DETAIL**



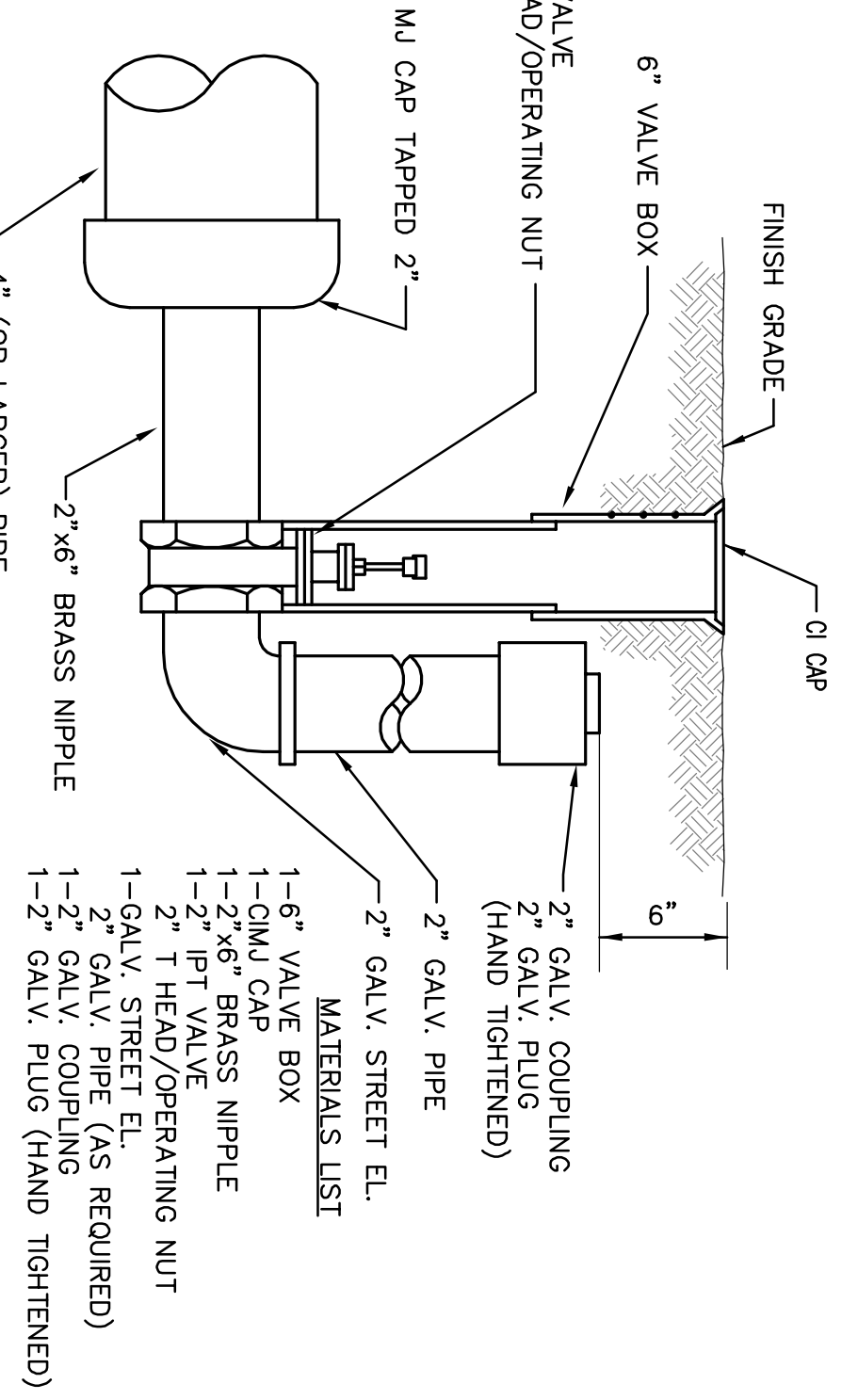
**PROTECTIVE FILL DETAIL**



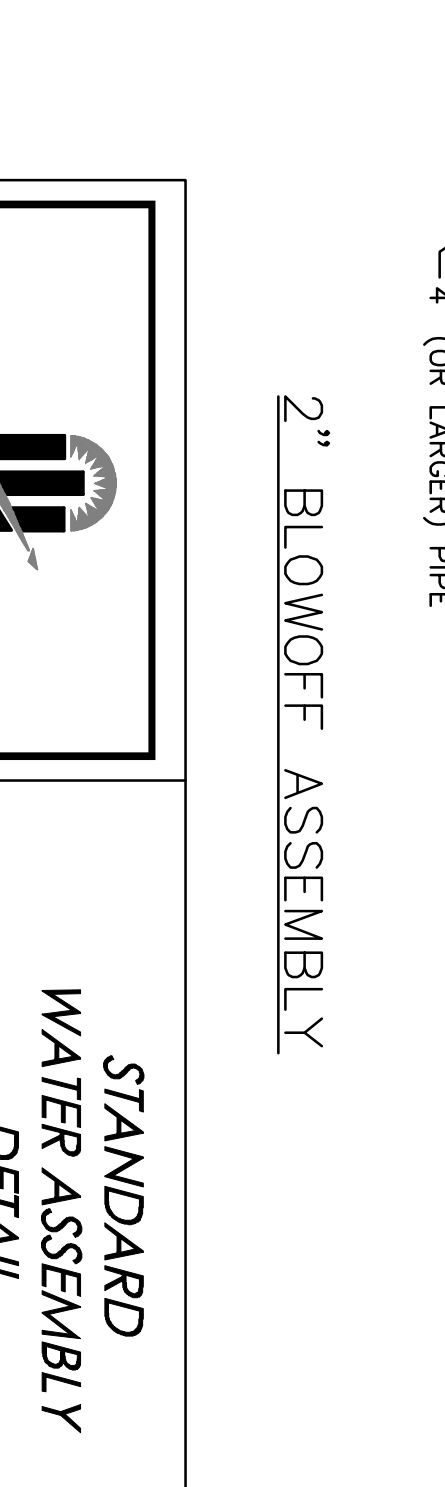
**ANCHORED VALVE ASSEMBLY**



**2" BLOWOFF ASSEMBLY**



**STANDARD WATER ASSEMBLY DETAIL**



**THRUST AT VALVES**

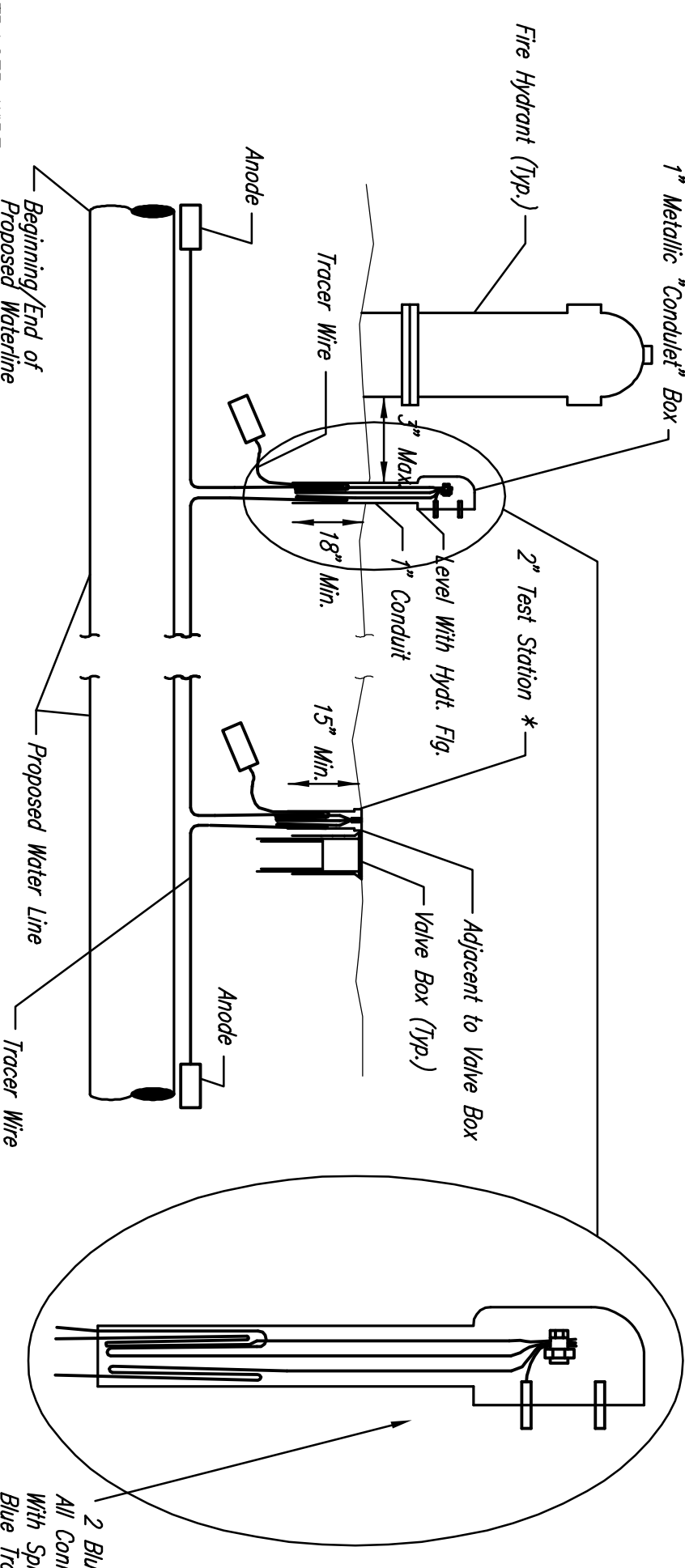
VALVE	THRUST AT 150 #/sq
4"	1809 lbs.
6"	4245 lbs.
8"	7540 lbs.
12"	16965 lbs.

- Notes:**
1. Concrete Block at Valve to have sufficient bearing in undisturbed soil to prevent thrust movement as shown in table at right. Field Engineer to determine thrust loading of undisturbed soil and final size of thrust block.
  2. The thrust block shall be constructed such that bolts, nuts, and other MU accessories are kept clear of concrete.
  3. All valves at dead ends and at other locations as called out on the plans shall be blocked as shown here.

**ANCHORED VALVE ASSEMBLY, SPECIAL**

- MATERIALS LIST**
- 1- MU ANCHOR TEE OR TANGENTIAL OUTLET (0" x 6")
  - 1- 6" MU GATE VALVE
  - 1- 6" VALVE BOX AND VALVE STEM EXTENSION IF REQUIRED \*
  - 1- 6" DIOL. SJ PIPE (LENGTH VARIABLE)
  - 1- FIRE HYDRANT
  - 1- 6" ANCHOR COUPLING\*
  - 2- 6" DIOL. PIPE WITH ADEQUATE JOINT RESTRAINT \*
  - 2- 90° BENDS\*
  - 6" DIOL. PIPE (AS REQUIRED)
  - CONCRETE BLOCKING (AS REQUIRED)
  - RIVER WASHED PEA GRAVEL (AS REQUIRED)

**FIRE HYDRANT ASSEMBLY PER CITY OF WICHITA SPECIFICATIONS**



**TRACER WIRE**  
Conductive type pipe locater/tracer wire shall be installed to locate all waterline pipe regardless of pipe material. The wire shall extend the entire length of the proposed pipe. The wire shall be taped to the waterline and pulled with the pipe. Split-bolt connectors shall be used at splice locations. Electrical tape shall cover all splices so no bare wire is exposed. Test stations shall be installed adjacent to all the hydrants along the waterline and at blowoffs or valves near the ends of the waterlines. Any exceptions to the location of test stations shall be approved by the engineer. At each test station, the tracer wire shall be connected to a 3 lb. Zinc or magnesium anode. Anodes shall also be attached to the tracer wire at both the beginning and the end of the proposed waterline. A typical layout of the tracer wire and test station is provided in the above figure.

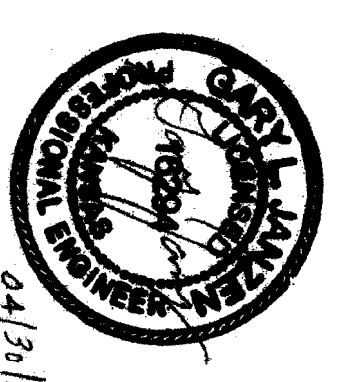
**WIRE**  
The tracer wire shall be Blue No. 12 THHN unshielded soft copper wire with thermal plastic insulation or Blue No. 12 AWG CCS with 30 mil HDPE insulation. The insulation shall be heat, oil, and gasoline resistant as manufactured by Temple Electric or approved equal. To allow for grade adjustment, a minimum of 12" of excess wire shall be coiled at the bottom of the test station for all wires. The insulation sheathing shall be removed such that 1" bare copper wire is at all points of connection. Contractor shall attach wire being installed with proposed water main to any tracer wire installed with adjacent waterline projects.

**TEST STATIONS**  
The test station for fire hydrant applications shall be a 1 inch galvanized "condulet" style test station as manufactured by AGRA Industries with a removable solid cover having two leads extending from the face or approved equal. The test station for valve applications shall be a 2 inch flush style test station 12SSB as manufactured by HANDLEY Industries or approved equal. The conduit style test station shall be attached to a 1 inch rigid galvanized conduit with a minimum length of 36" and plastic end bushing. The flush style shall have the word "WATER" stamped or molded into the lid. All test stations shall be manufactured using molded blue tops or sufficiently coated with blue enamel paint. The tracer wire and the anode wire shall be installed to allow 10 inches of wire within the test station. In concrete environments such as sidewalks or in the downtown area the contractor shall use the flush style test station. The location of all test stations shall be approved by the engineer, recorded, and shown in the as-built drawings.

**ANODES**  
The anodes shall be 3 lb. bare zinc or magnesium. The anodes shall be buried at the same elevation as the waterline of each test station. The anodes shall be connected to Black No. 12 THHN unshielded soft copper wire which shall be extended to the test station.

**TRACER WIRE DETAIL**

COST IS SUBSIDIARY TO PIPE INSTALLATION



**CITY OF WICHITA**  
PUBLIC WORKS & UTILITIES ENGINEERING DIVISION

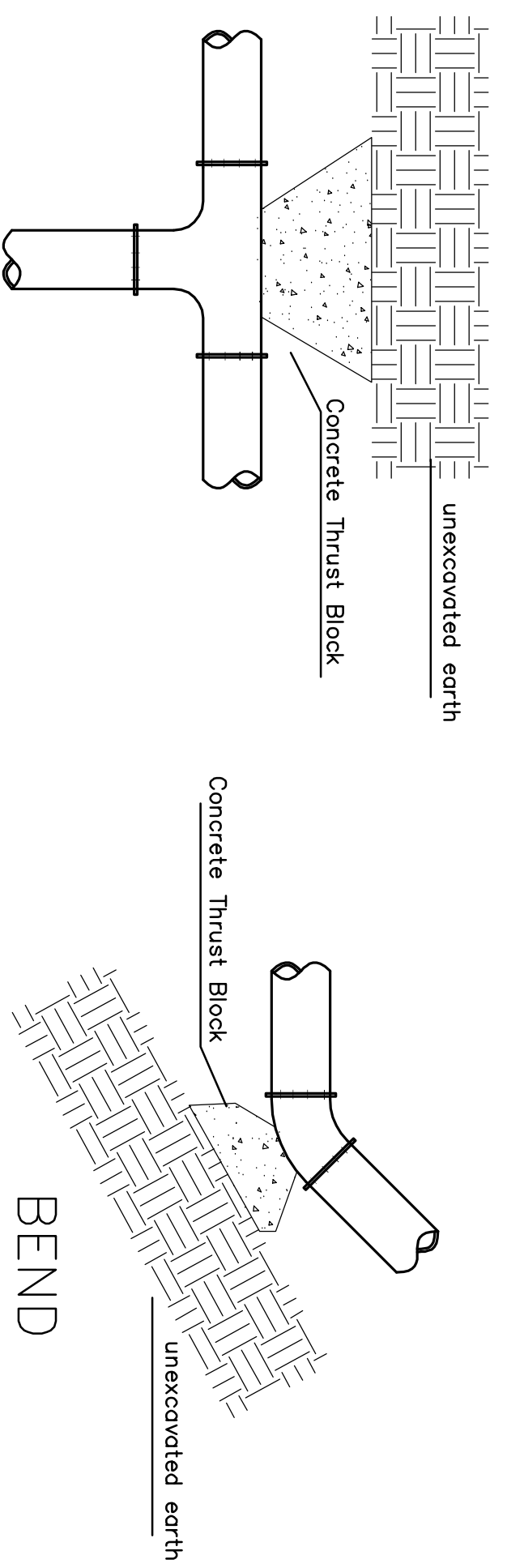
**GARY JANZEN, P.E.**  
CITY ENGINEER

**1/758PPW**  
PROJECT NUMBER

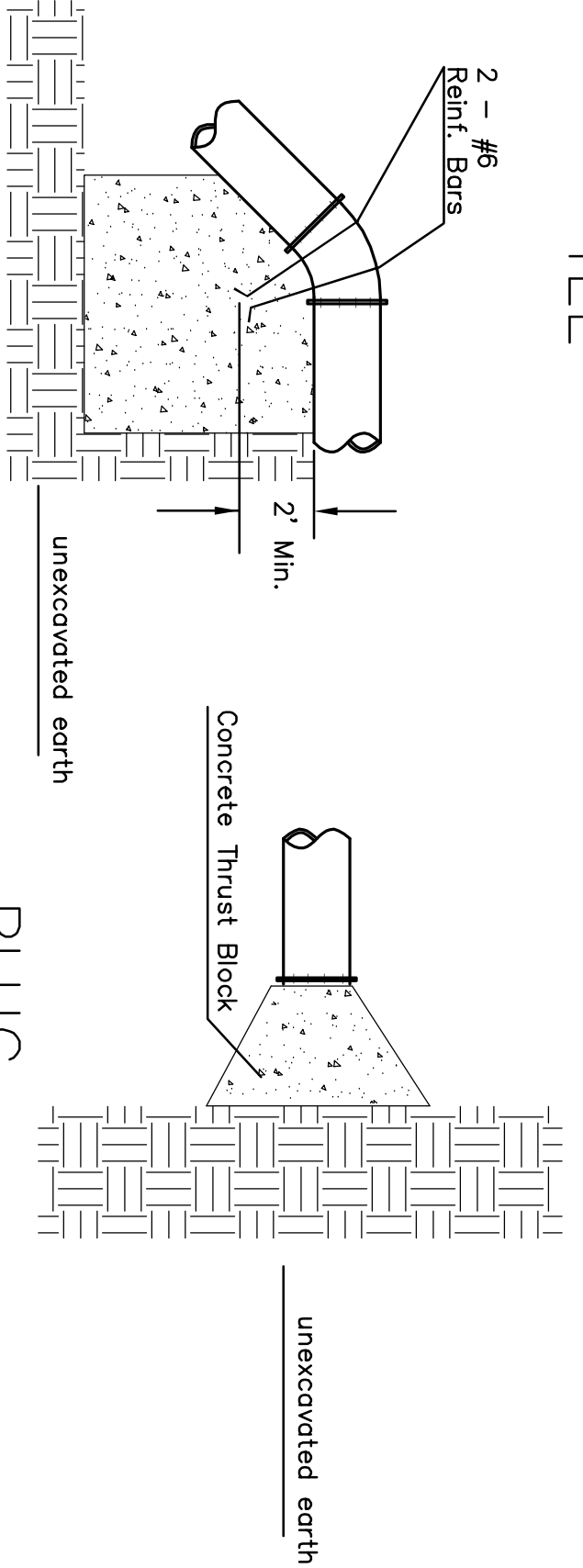
**0**  
CCA NUMBER

**04/2013**  
DATE

**2 of 4**  
SHEET

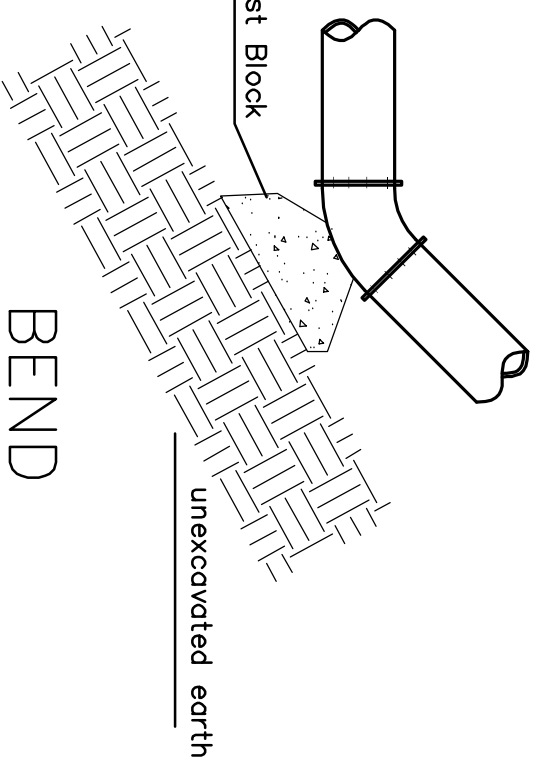


TEE



PLUG

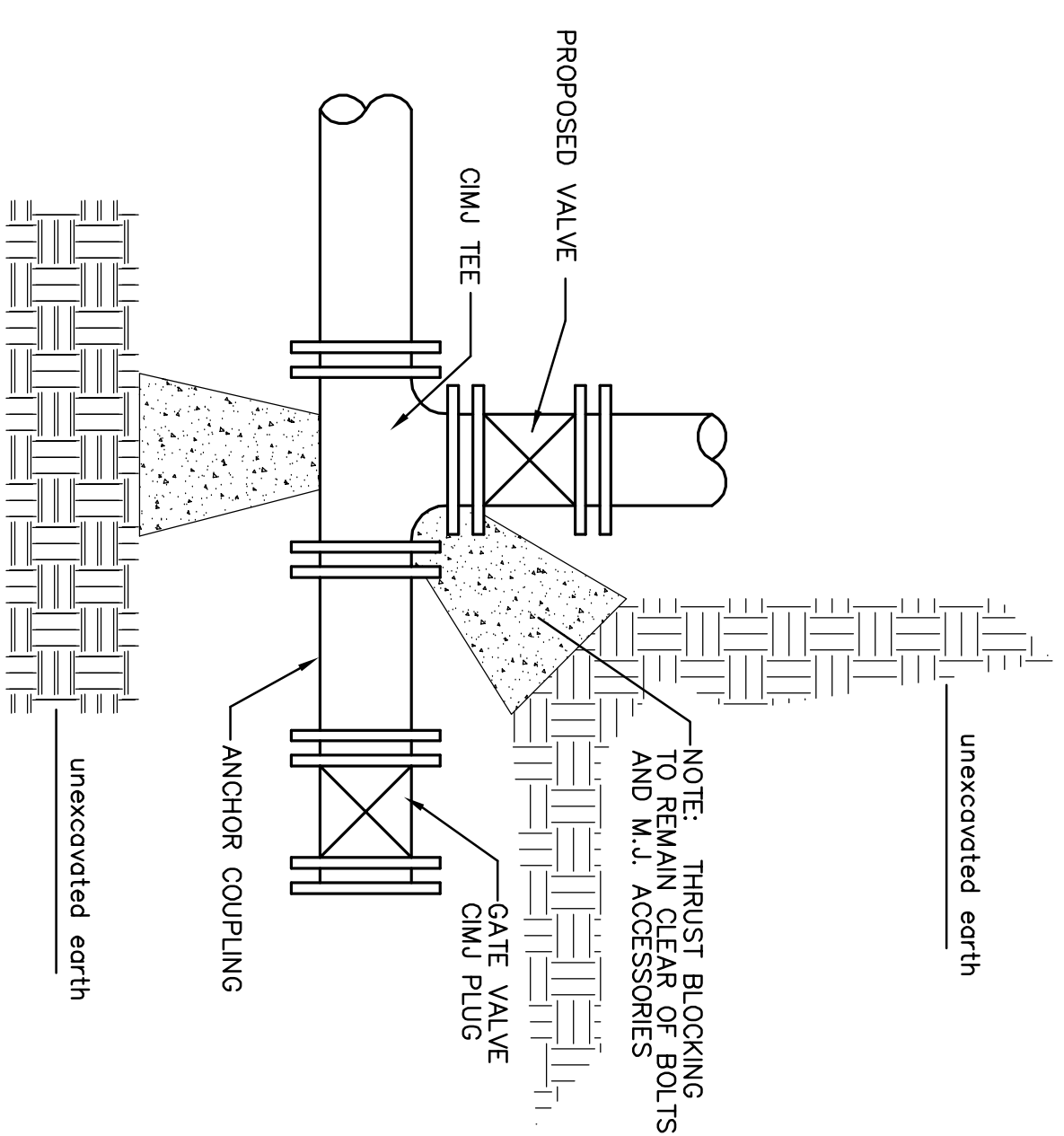
VERTICAL BEND



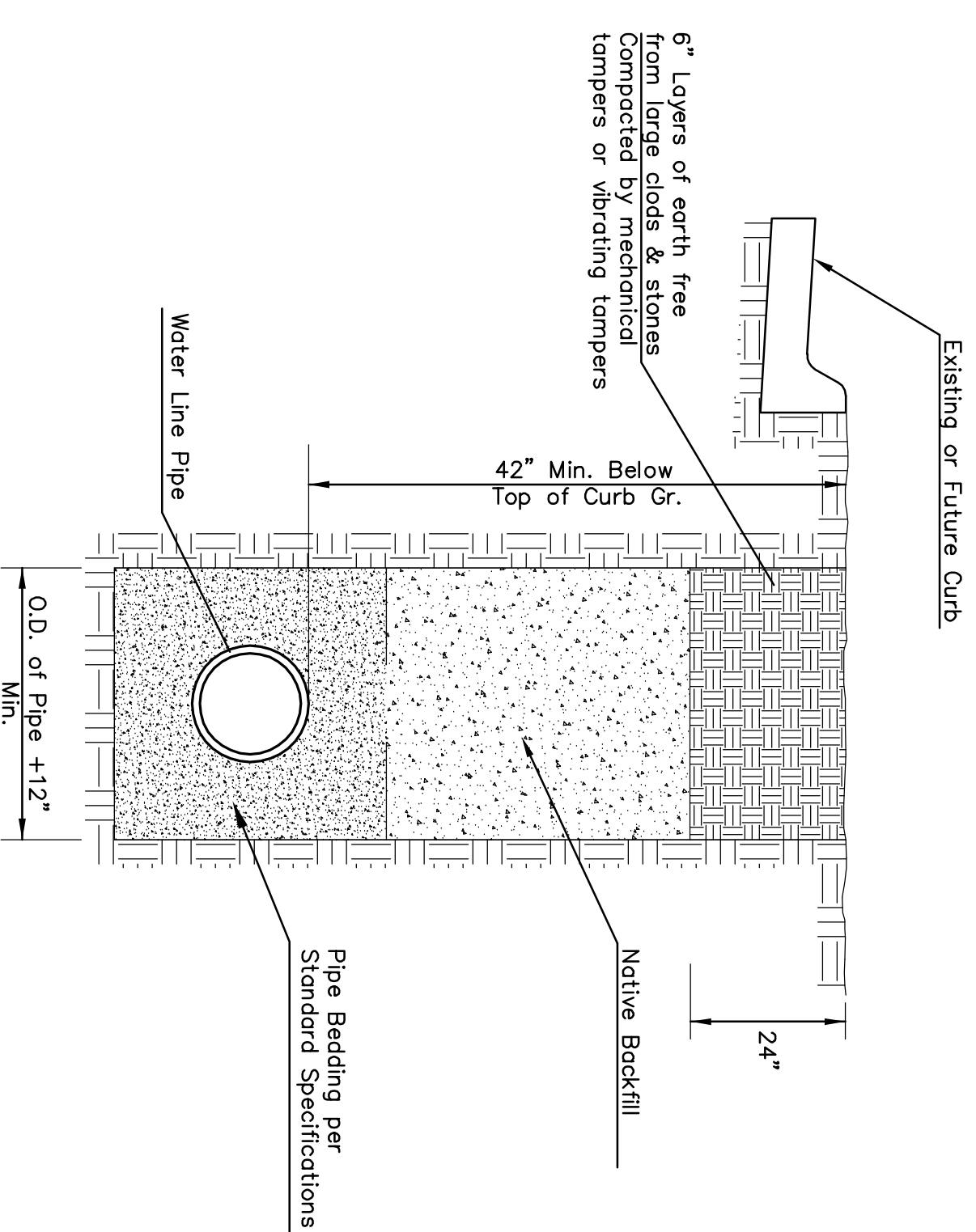
BEND

PIPE SIZE	THRUST AT FITTINGS IN TONS- AT 150#/IN <sup>2</sup> P
6"	2.8
8"	4.9
12"	11.4
16"	20.15
20"	31.15
24"	44.55

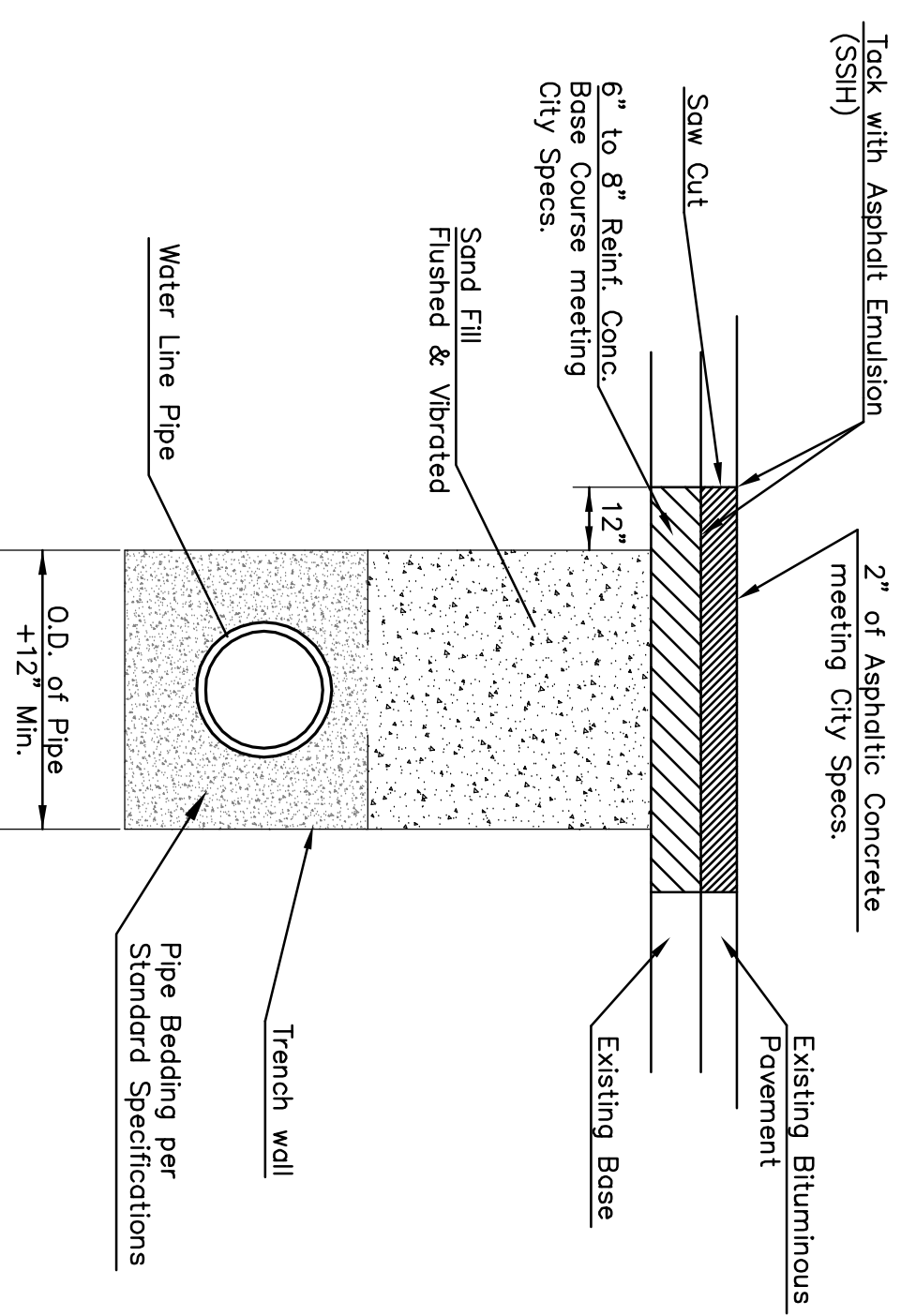
TYPICAL THRUST BLOCKS



KEY BLOCK DETAIL

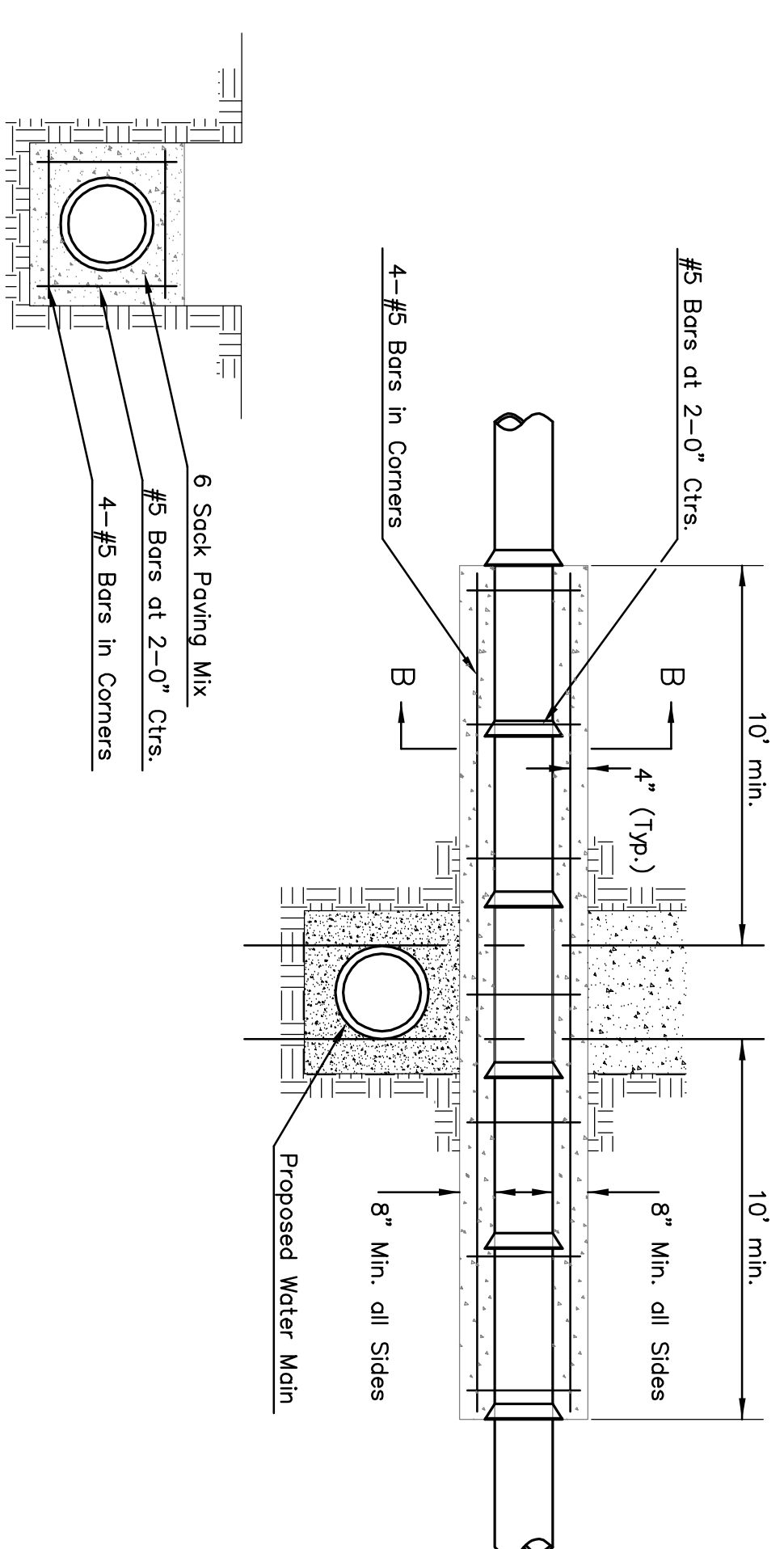


TRENCH COMPACTION IN ROAD RIGHT-OF-WAY



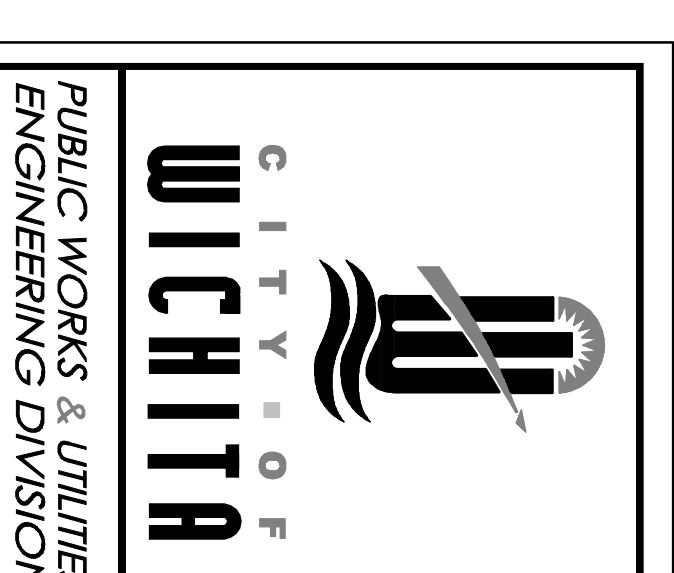
PAVEMENT REPLACEMENT & TRENCH COMPACTION UNDER EXISTING AND PROPOSED CITY ROADS

\* PLANS GOVERN UNLESS OTHERWISE NOTED ON PLANS



SECTION B-B

REINFORCED CONCRETE ENCASEMENT OF SANITARY SEWER



<b>MISCELLANEOUS WATER DETAILS</b>	
<b>GARY JANZEN, P.E.</b> CITY ENGINEER	
PROJECT NUMBER <b>1758PPW -</b>	DATE <b>04/2013</b>
CITY ENGINEER'S OFFICE CITY HALL - SEVENTH FLOOR 455 NORTH MAIN STREET WICHITA, KANSAS 67202-1620 (316) 268-4501	SHEET <b>3 of 4</b>



