

STA. 0+58.42 CHERRY CREEK
INLET HOOKUP AND ADJUST EXISTING
FRAME TO ELEV.=1338.56 (BOTH SIDES)

STA. 0+03.50 CHERRY CREEK
INSTALL TYPE III END OF ROAD
BARRIERS.

PLACE 20 SY OF
AB-3 ROCK SURFACING.

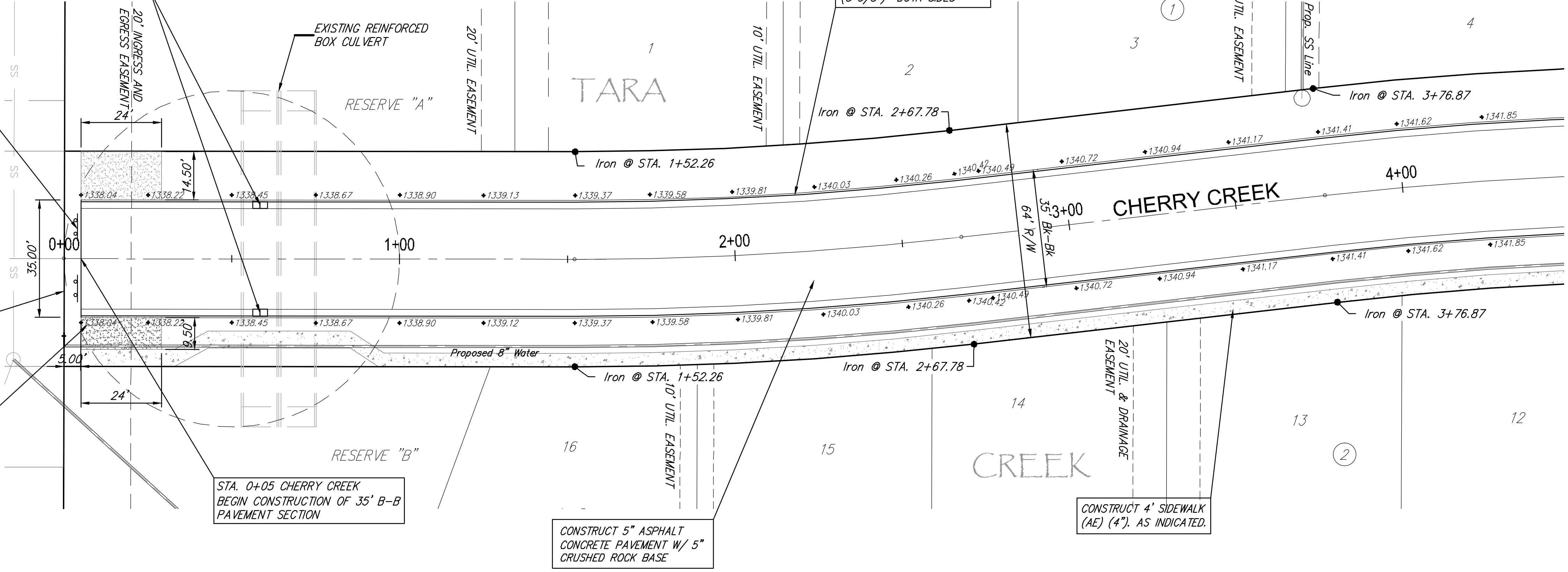
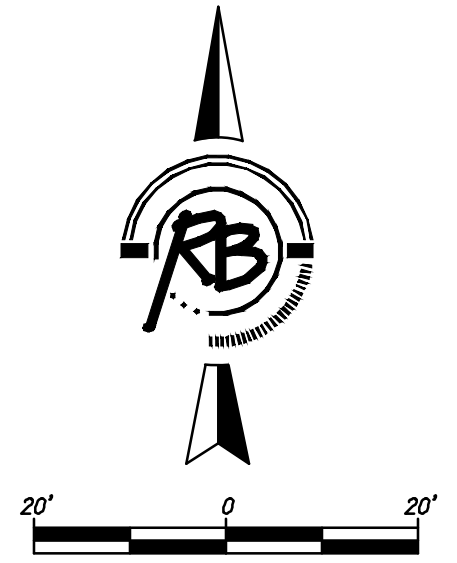
CONSTRUCT 5" TEMPORARY ASPHALT
TURNAROUND WITH 5" CRUSHED ROCK
BASE AS INDICATED (BOTH SIDES).
64 SQ. YDS TOTAL.

STA. 0+05 CHERRY CREEK
BEGIN CONSTRUCTION OF 35' B-B
PAVEMENT SECTION

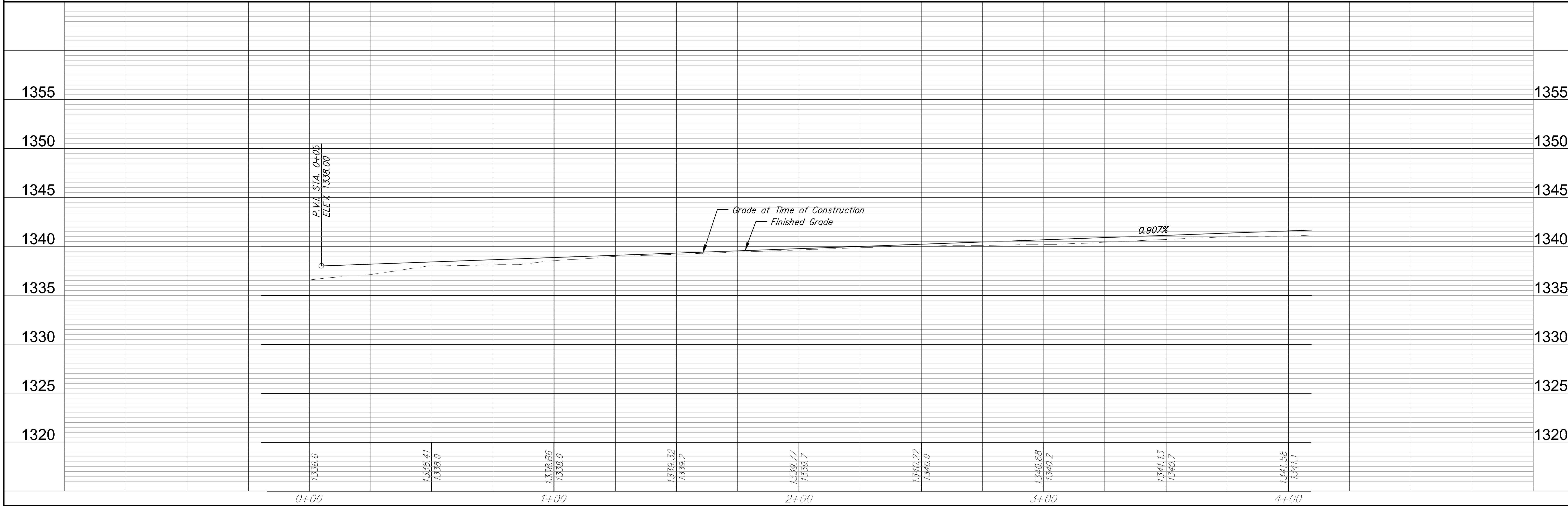
CONSTRUCT 5" ASPHALT
CONCRETE PAVEMENT W/ 5"
CRUSHED ROCK BASE

CONSTRUCT COMBINED ROLL
TYPE CURB AND GUTTER
(3 5/8") BOTH SIDES

CONSTRUCT 4' SIDEWALK
(AE) (4"). AS INDICATED.



TO ELEV. (FULL) =
CENTERLINE+0.04'



RUGGLES BOHM
INCORPORATED
ENGINEERING | SURVEYING | LANDSCAPE ARCHITECTURE | ENVIRONMENTAL

PROJECT NUMBER: 472-84560
DRAWING FILE: Eng base {Cherry Creek 1}

DESIGN: AML
DRAWN: AML
DATE: Oct. 25, 2013

TARA CREEK PAVING IMPROVEMENTS
CHERRY CREEK
WICHITA, KANSAS

REVISIONS:
REVISED: _____
DATE: _____

20