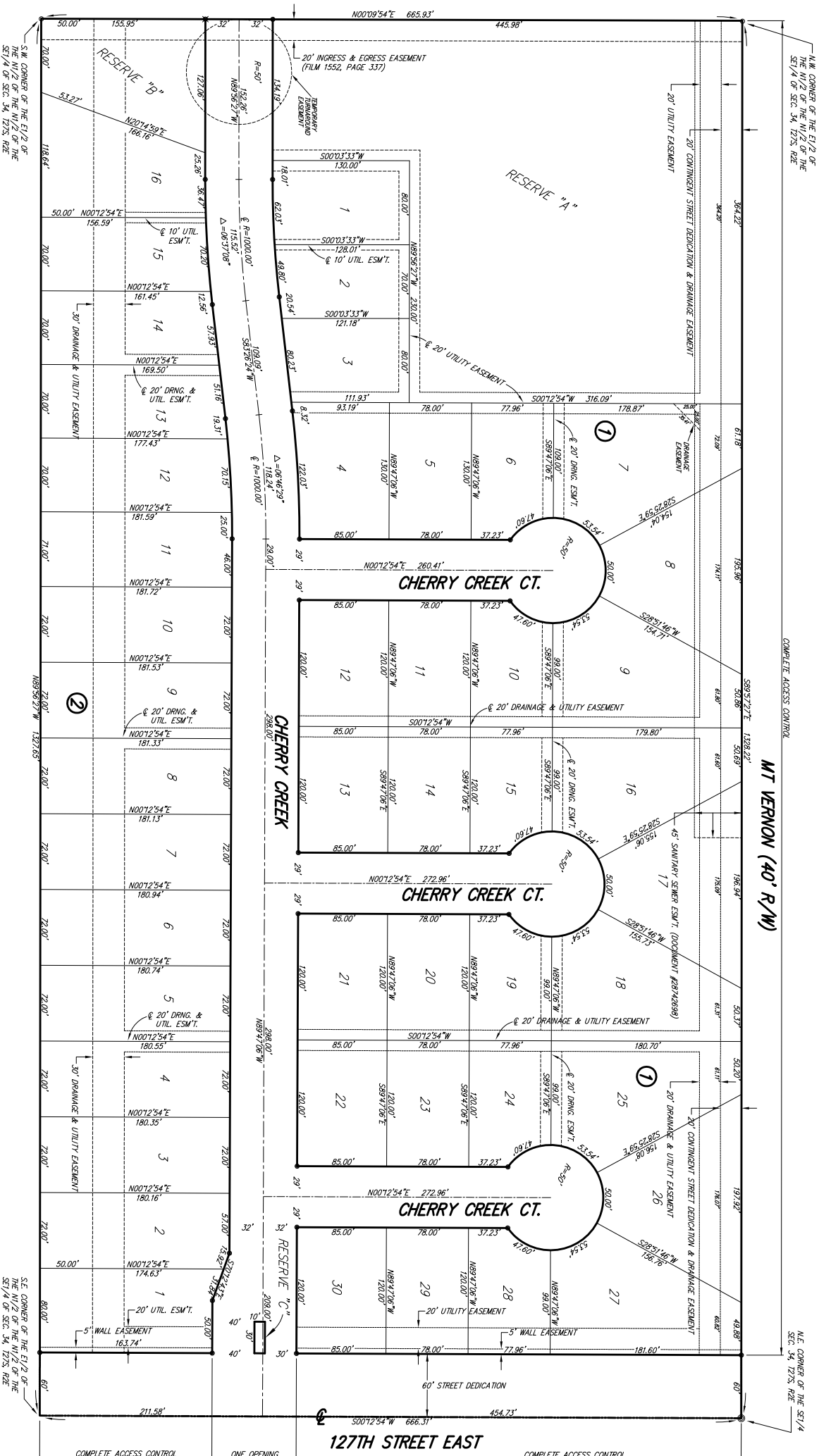


# TARA CREEK

## An Addition to Wichita, Sedgwick County, Kansas



State of Kansas) SS  
Sedgwick County)

We, Ruggles & Bohm, P.A., Land Surveyors in aforesaid county and state, do hereby certify that, under the supervision of the undersigned, we have surveyed and plotted "TARA CREEK", An Addition to Wichita, Sedgwick County, Kansas, and that the accompanying plat is a true and correct exhibit of the property surveyed, described as follows:

The East Half of the North Half of the North Half of the Southeast Quarter of Section 34, Township 27 South, Range 2 East of the 6th P.M., Sedgwick County, Kansas.

All public easements and dedications are hereby vacated by virtue of K.S.A. 12-512(b).

Ruggles & Bohm, P.A.  
Land Surveyor  
Thomas C. Ruggles

Know all men by these presents that we, the undersigned, have caused the land described in the surveyor's certificate to be plotted into Lots, Blocks, Reserves and Streets, to be known as "TARA CREEK", An Addition to Wichita, Sedgwick County, Kansas. Access Controls as indicated are hereby granted to the appropriate governing body. The streets are hereby dedicated to and for the use of the public. Utility Easements are hereby granted for the construction and maintenance of all public utilities. Drainage Easements are hereby granted to the public as indicated for walls, signage, gazebos, playground, structures, picnic areas/tables with canopies, irrigation, walks, lighting, landscaping, berms, lakes, drainage, drainage structures, and utilities confined to easements. Reserve "C" is hereby reserved for entry features, signage, irrigation, lighting and landscaping. The Reserves are to be owned and maintained by the Home Owners Association for the addition. The contingent street dedication shall become effective in the event that the City determines a need for the right-of-way for any street-related purposes. The temporary turnaround easement is hereby granted for the use of the public, and will expire upon extension of Cherry Creek beyond the limits of this plat. A drainage plan has been developed for this plat; the property shall remain at established grades, or as modified with the approval of the City Engineer, and unobstructed to allow for the conveyance of storm water.

State of Kansas) SS  
Sedgwick County)

The foregoing instrument acknowledged before me, this \_\_\_\_\_ day of \_\_\_\_\_, 2007, by Eugene Vitarelli, President of A&D Properties, Inc., on behalf of the corporation.

Notary Public  
Mildred E. Franz

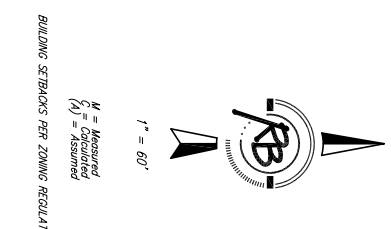
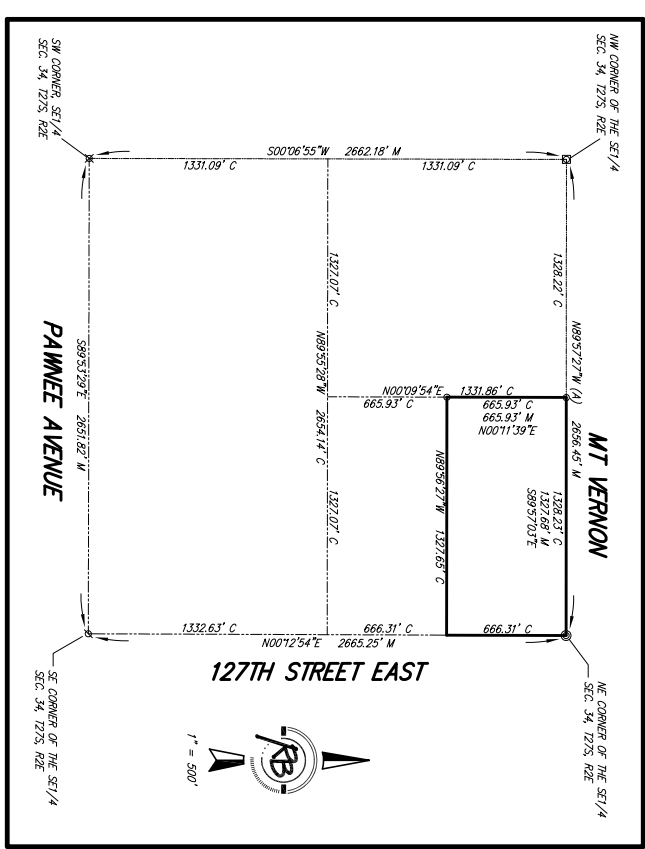
My appointment expires \_\_\_\_\_

This plat of "TARA CREEK", An Addition to Wichita, Sedgwick County, Kansas has been submitted to and approved by the Wichita-Sedgwick County Metropolitan Area Planning Commission, Wichita, Kansas.

Dated this \_\_\_\_\_ day of \_\_\_\_\_, 2007.

Wichita-Sedgwick County Metropolitan Area Planning Commission  
Darrell A. Downing  
Chair

John L. Schlegel  
Secretary



This plat approved and all dedications shown hereon accepted by the City Council of the City of Wichita, Kansas, this \_\_\_\_\_ day of \_\_\_\_\_, \_\_\_\_\_.

At the Direction of the City Council  
Carl Brewer  
Mayor

Karen Sublett  
City Clerk

Tricia L. Robello, LS #1246  
Deputy County Surveyor  
Sedgwick County Kansas

Entered on transfer record this \_\_\_\_\_ day of \_\_\_\_\_, \_\_\_\_\_

State of Kansas) SS  
Sedgwick County)

This is to certify that this plat has been filed for record in the office of the Register of Deeds, this \_\_\_\_\_ day of \_\_\_\_\_, at \_\_\_\_\_ o'clock \_\_\_\_\_ M., and is duly recorded.

Bill Meek  
Register of Deeds

Tony Buckingham  
Deputy

Sht. 20 of 20

**RUGGLES & BOHM, P.A.**  
ENGINEERING, SURVEYING, LAND PLANNING

924 North Main  
Wichita, Kansas 67203  
www.chikansas.com

(316) 264-4008  
(316) 264-4021 fax  
E-mail: info@chikansas.com

A & D Properties, Inc.  
Eugene Vitarelli  
President