

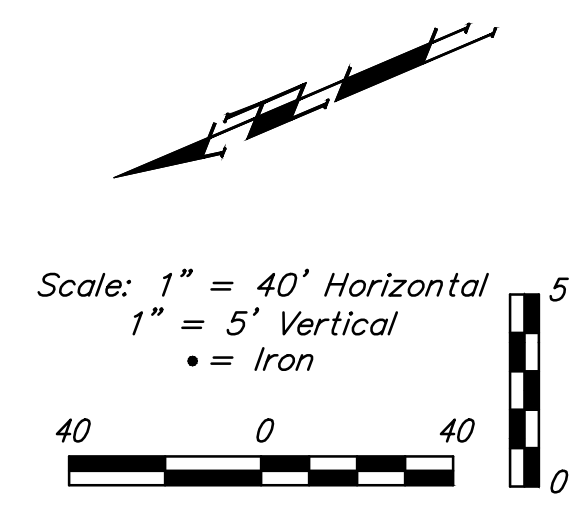
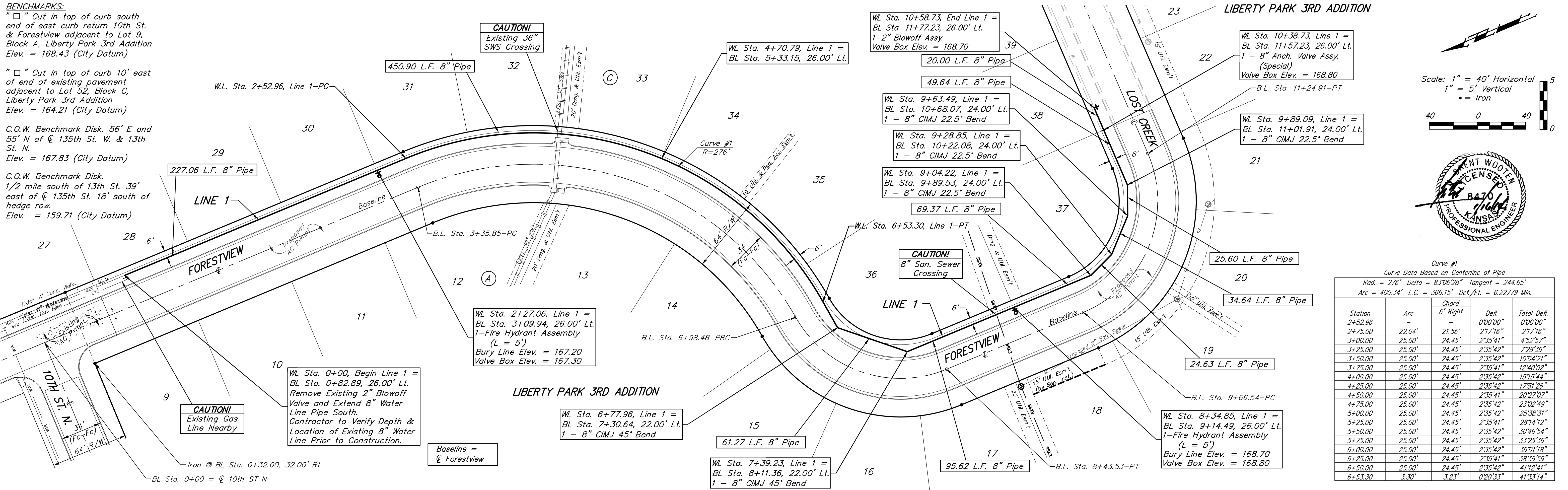
BENCHMARKS:

"□" Cut in top of curb south end of east curb return 10th St. & Forestview adjacent to Lot 9, Block A, Liberty Park 3rd Addition Elev. = 168.43 (City Datum)

"□" Cut in top of curb 10' east of end of existing pavement adjacent to Lot 32, Block C, Liberty Park 3rd Addition Elev. = 164.21 (City Datum)

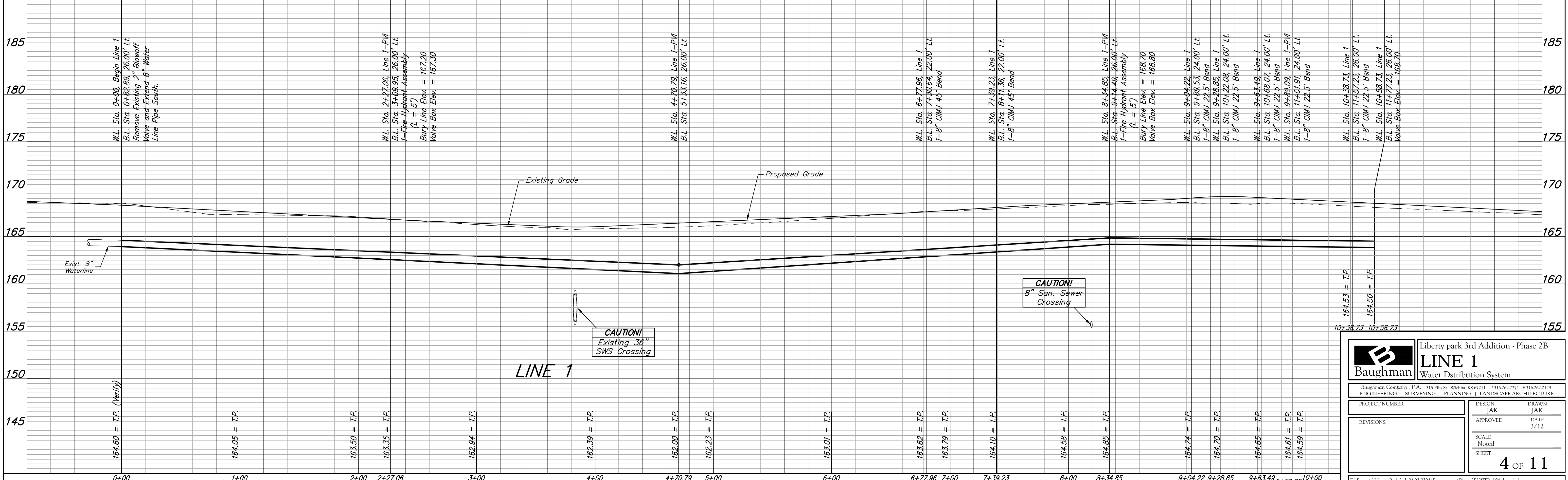
C.O.W. Benchmark Disk, 56' E and 55' N of \odot 135th St. W. & 13th St. N. Elev. = 167.83 (City Datum)

C.O.W. Benchmark Disk, 1/2 mile south of 13th St. 39' east of \odot 135th St. 18' south of hedge row. Elev. = 159.71 (City Datum)



Curve #1
Curve Data Based on Centerline of Pipe
Rad. = 276' Delta = 83°06'28\"

Station	Arc	Chord	Defl.	Total Defl.
2+52.96	-	0'00'00"	0'00'00"	0'00'00"
2+75.00	22.04'	21.56'	2'17'16"	2'17'16"
3+00.00	25.00'	24.45'	2'35'41"	4'52'57"
3+25.00	25.00'	24.45'	2'35'42"	7'28'39"
3+50.00	25.00'	24.45'	2'35'42"	10'04'21"
3+75.00	25.00'	24.45'	2'35'41"	12'40'02"
4+00.00	25.00'	24.45'	2'35'42"	15'15'44"
4+25.00	25.00'	24.45'	2'35'42"	17'51'26"
4+50.00	25.00'	24.45'	2'35'41"	20'27'07"
4+75.00	25.00'	24.45'	2'35'42"	23'02'49"
5+00.00	25.00'	24.45'	2'35'42"	25'38'31"
5+25.00	25.00'	24.45'	2'35'41"	28'14'12"
5+50.00	25.00'	24.45'	2'35'42"	30'49'54"
5+75.00	25.00'	24.45'	2'35'42"	33'25'36"
6+00.00	25.00'	24.45'	2'35'42"	36'01'18"
6+25.00	25.00'	24.45'	2'35'41"	38'36'59"
6+50.00	25.00'	24.45'	2'35'42"	41'12'41"
6+53.30	3.30'	3.23'	0'20'33"	41'33'14"



B **Baughman** Liberty park 3rd Addition - Phase 2B
LINE 1
Water Distribution System

Baughman Company, P.A. 315 Ellis St., Wichita, KS 67211 P 316-263-2771 F 316-262-0149
ENGINEERING | SURVEYING | PLANNING | LANDSCAPE ARCHITECTURE

PROJECT NUMBER	DESIGN	DRAWN
	JAK	JAK
REVISIONS:	APPROVED	DATE
		3/12
	SCALE	
	Noted	
	SHEET	

4 OF 11

E:\Projects\Liberty Park 3rd_0403P304\Engineering\Phase 2B\WTR_04_Line 1.dwg