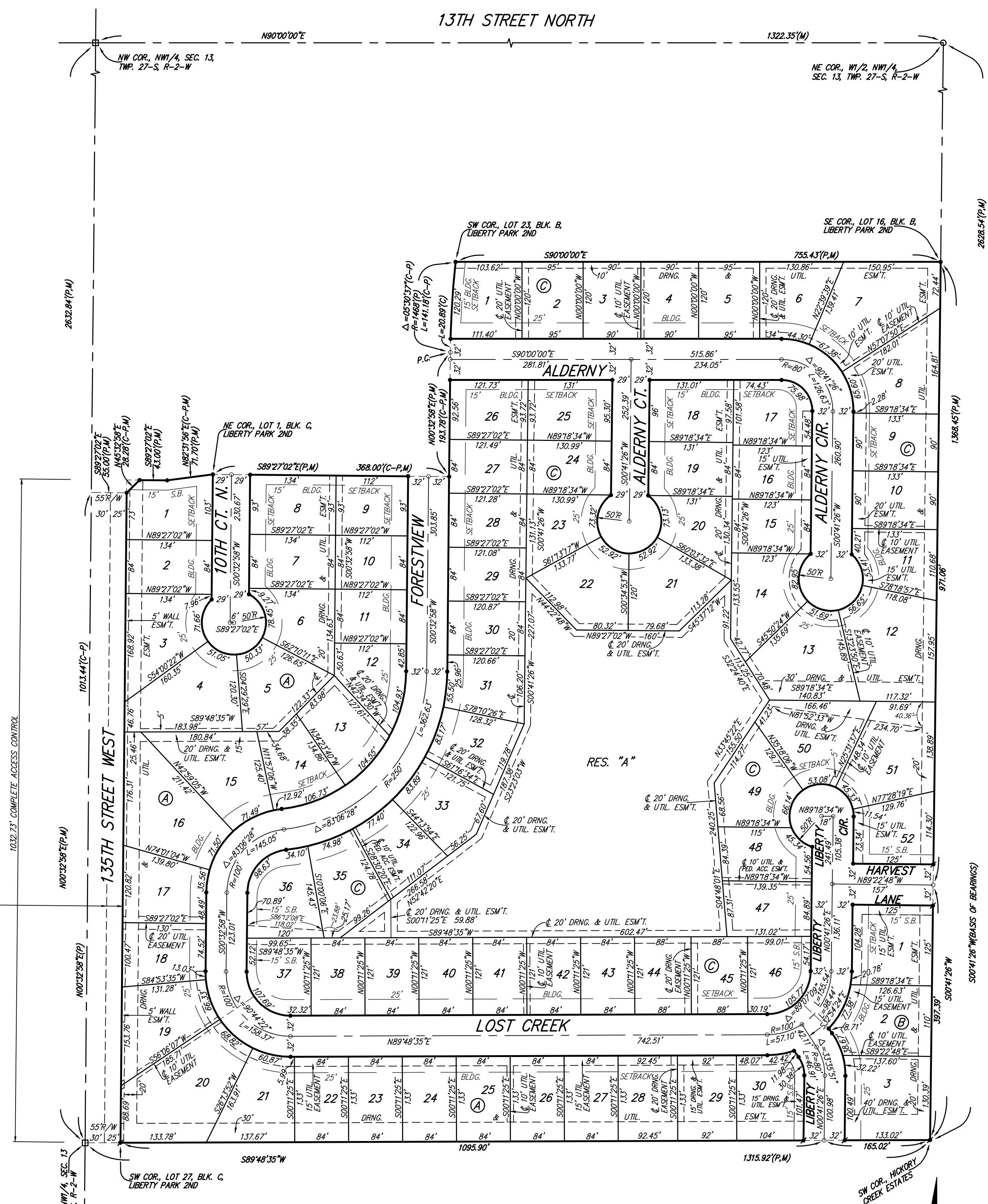


LIBERTY PARK 3RD

AN ADDITION TO WICHITA, SEDGWICK COUNTY, KANSAS



MINIMUM BUILDING PAD ELEVATIONS FOR LOWEST OPENING TO THE STRUCTURES		
LOT	BLOCK	ELEVATION
13,14, 20-23	C	163.5
29-35, 38-45	C	163.5
47-50	C	163.5

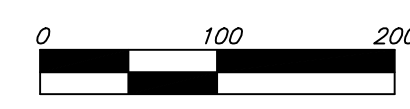
BENCHMARK:
 13TH ST. W. & 13TH ST. N. - CITY OF WICHITA DISC
 AT SOUTHWEST CORNER OF INTERSECTION,
 30.00'± S. OF C. OF 13TH ST. N.
 35.00'± W. OF C. OF 13TH ST. W.
 ELEV. = 168.25 CITY DATUM
 (1355.65 NGVD29)

SMALL RAILROAD SPIKE IN 2ND HLP. W. OF 13TH ST. W.
 ON SOUTH SIDE OF 13TH ST. N. (W. FACE OF HLP.)
 ELEV. = 172.10 CITY DATUM
 (1359.50 NGVD29)

604 NAIL IN HIGH LINE POLE, 800' W. &
 31' N. OF THE NE COR., NW 1/4, SEC. 13,
 TWP. 27-S, R-2-W
 ELEV. = 162.69 CITY DATUM
 (1350.08 NGVD29)

- = #4 REBAR W/ "BAUGHMAN" CAP (SET)
- = #4 REBAR W/ "BAUGHMAN" CAP (FOUND)
- = 3/4" IRON W/ ILLEGIBLE YELLOW CAP (FOUND)
- = 3/4" IRON W/ "SEDGWICK COUNTY" METAL CAP IN CONCRETE (FOUND)

(M) = MEASURED
 (P) = PLATTED
 (C-P) = CALCULATED PER PLATTED INFO.



NOTE:
 A master grading plan for drainage has been developed for this subdivision and is on file with the City of Wichita, Kansas. All drainage easements, rights-of-way, or reserves shall remain at established grades or as modified with the approval of the City Engineer of the City of Wichita, Kansas. No obstructions which impede the flow of this drainage system shall be allowed.

State of Kansas) SS We, *Baughman Company, P.A.*, Surveyors in Sedgwick County) do hereby certify that we have surveyed and platted "LIBERTY PARK 3RD", an Addition to Wichita, Sedgwick County, Kansas and that the accompanying plat is a true and correct exhibit of the property surveyed, described as and being a replat of all of Lots 24, 25, 26, 27, 28, 29, 30, 31, 32, 33, 34, 35, 36, 37, 38, and 39, Block B, Liberty Park 2nd, an Addition to Wichita, Sedgwick County, Kansas, together with all of Lots 1, 2, 3, 4, 5, 6, 7, 8, 9, 10, 11, 12, 13, 14, 15, 16, 17, 18, 19, 20, 21, 22, 23, 24, 25, 26, 27, 28, 29, 30, 31, 32, 33, 34, 35, 36, and 37, Block C, in said Liberty Park 2nd, together with all of Lots 1, 2, 3, 4, 5, 6, 7, 8, 9, 10, 11, 12, 13, 14, 15, 16, 17, 18, 19, 20, 21, 22, 23, 24, 25, 26, 27, 28, 29, 30, 31, 32, 33, 34, 35, and 36, Block D, in said Liberty Park 2nd, together with all of Lots 1, 2, and 3, Block E, in said Liberty Park 2nd, together with that part of Forestview lying south of the north line of Lot 9 in said Block C, as extended east to the west line of Lot 2 in said Block D, the most southerly Forestview Ct., 10th Ct. N. lying south of 10th St. N., Alderny, Alderny Ct., Liberty, Harvest Lane, Lost Creek, and Lost Creek Cir., all as dedicated in said Liberty Park 2nd.

Existing public easements and dedications being vacated by virtue of K.S.A. 12-512(b), All being situated in the NW 1/4 of Sec. 13, Twp. 27-S, R-2-W of the 6th P.M., Sedgwick County, Kansas.
Baughman Company, P.A.

_____, Surveyor
 Michael G. Conroy

We, the undersigned holders of mortgages on the above described property, do hereby consent to this plat of "LIBERTY PARK 3RD", an Addition to Wichita, Sedgwick County, Kansas.
 Legacy Bank

State of Kansas) SS The foregoing instrument acknowledged before me, this _____ day of _____, 2004, by _____ of Legacy Bank, on behalf of the bank.
 _____, Notary Public

This plat of "LIBERTY PARK 3RD", an Addition to Wichita, Sedgwick County, Kansas has been submitted to and approved by the Wichita-Sedgwick County Metropolitan Area Planning Commission, Wichita, Kansas.
 Dated this _____ day of _____, 2004.
 Wichita-Sedgwick County Metropolitan Area Planning Commission

_____, Chair
 Ronald L. Marnell
 _____, Secretary
 John L. Schlegel

This plat approved and all dedications shown hereon accepted by the City Council of the City of Wichita, Kansas, this _____ day of _____, 2004.

_____, Mayor
 Carlos Mayans
 _____, City Clerk
 Karen Sublett

Reviewed in accordance with K.S.A. 58-2005 on this _____ day of _____, 2004.

_____, Deputy County Surveyor
 Tricia L. Robello, L.S. #1246
 Sedgwick County, Kansas

Entered on transfer record this _____ day of _____, 2004.

_____, County Clerk
 Don Brace

State of Kansas) SS This is to certify that this plat has been filed for record in the office of the Register of Deeds, this _____ day of _____, 2004 at _____ o'clock _____ M.; and is duly recorded.

_____, Register of Deeds
 Bill Meek
 _____, Deputy
 Linda Kizzire

State of Kansas) SS The foregoing instrument acknowledged before me, this _____ day of _____, 2004, by Paul E. Kelsey, President of Kelsey Investments, Inc., on behalf of the corporation.
 _____, Notary Public

My App't. Exp. _____