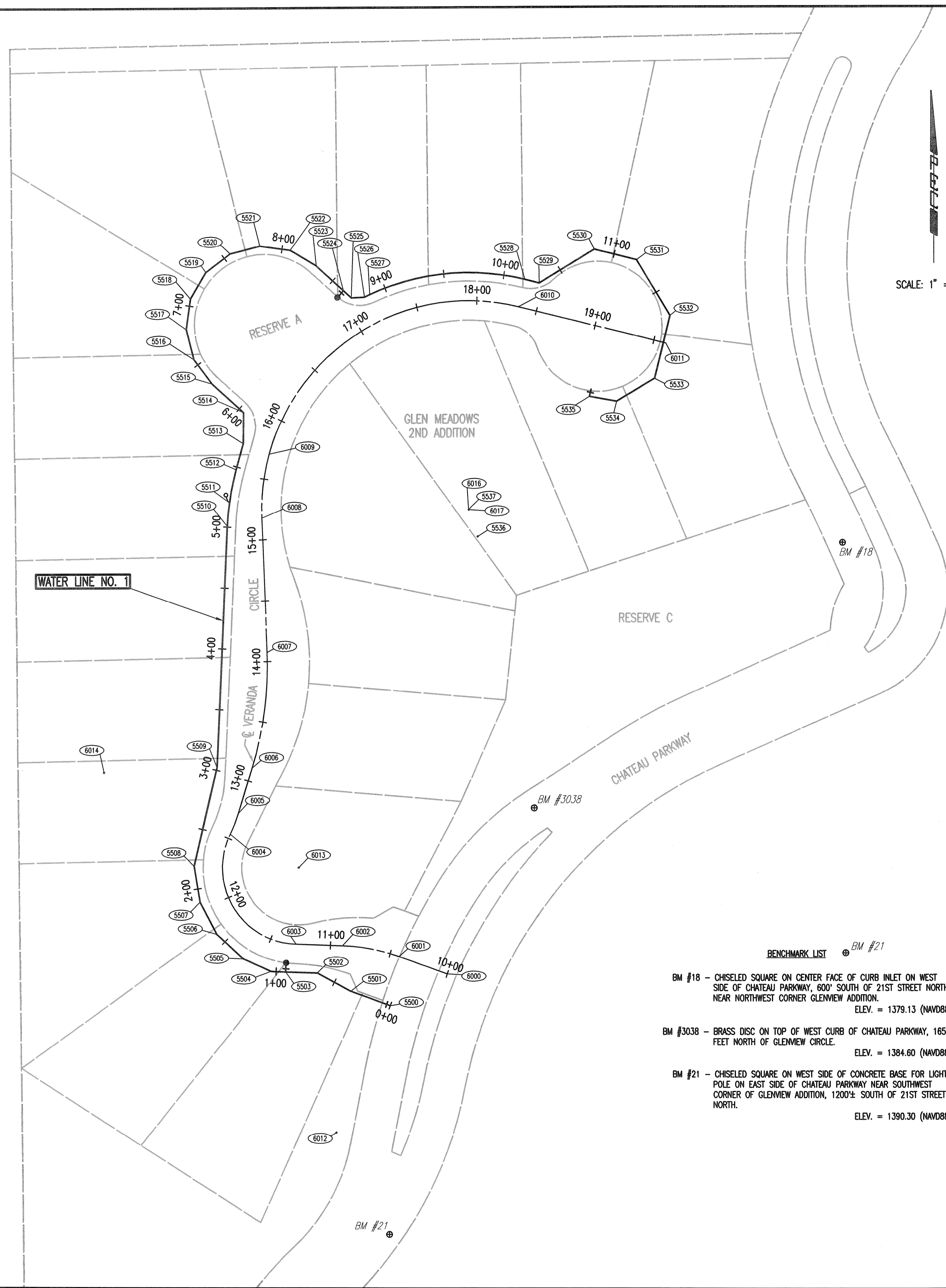


Saved 01-29-2014 9:22:33 AM by CSL
 Plot Scale 1" = 50' - 2/28/2014 10:15:56 AM by CSL
 2:20:13\11493\001\13438-001-COF-WATERLINE BUBBLE MAP



SCALE: 1" = 50'

BENCHMARK LIST

- BM #18 - CHISELED SQUARE ON CENTER FACE OF CURB INLET ON WEST SIDE OF CHATEAU PARKWAY, 600' SOUTH OF 21ST STREET NORTH NEAR NORTHWEST CORNER GLENVIEW ADDITION.
ELEV. = 1379.13 (NAVD88)
- BM #3038 - BRASS DISC ON TOP OF WEST CURB OF CHATEAU PARKWAY, 165 FEET NORTH OF GLENVIEW CIRCLE.
ELEV. = 1384.60 (NAVD88)
- BM #21 - CHISELED SQUARE ON WEST SIDE OF CONCRETE BASE FOR LIGHT POLE ON EAST SIDE OF CHATEAU PARKWAY NEAR SOUTHWEST CORNER OF GLENVIEW ADDITION, 1200'± SOUTH OF 21ST STREET NORTH.
ELEV. = 1390.30 (NAVD88)

COORDINATE LIST				
POINT	NORTHING	EASTING	STATION	DESCRIPTION
5500	386,192.4461	2,371,750.7246	0+00.00	VALVE
5501	386,204.1723	2,371,718.1722	0+34.60	BEND
5502	386,218.9900	2,371,690.3750	0+66.10	BEND
5503	386,219.9566	2,371,664.3930	0+92.10	HYDRANT
5504	386,220.4027	2,371,652.4013	1+04.10	BEND
5505	386,230.7367	2,371,629.6371	1+29.10	BEND
5506	386,251.1645	2,371,607.6665	1+59.10	BEND
5507	386,277.6937	2,371,593.6593	1+89.10	BEND
5508	386,307.2965	2,371,588.7936	2+19.10	BEND
5509	386,388.4206	2,371,607.7705	3+02.41	BEND
5510	386,586.4555	2,371,616.3239	5+00.63	PC
5511	386,605.7402	2,371,618.0633	5+20.00	AIR RELEASE
5512	386,632.9556	2,371,623.6912	5+47.82	PT
5513	386,654.2960	2,371,629.6226	5+69.97	BEND
5514	386,679.7879	2,371,629.8840	5+95.46	BEND
5515	386,703.1134	2,371,603.8761	6+30.39	BEND
5516	386,723.2487	2,371,588.7788	6+55.56	BEND
5517	386,747.6288	2,371,582.5362	6+80.73	BEND
5518	386,772.5421	2,371,586.0986	7+05.89	BEND
5519	386,794.1956	2,371,598.9237	7+31.06	BEND
5520	386,809.2930	2,371,619.0590	7+56.23	BEND
5521	386,815.5356	2,371,643.4391	7+81.39	BEND
5522	386,811.9732	2,371,668.3524	8+06.56	BEND
5523	386,799.1481	2,371,690.0059	8+31.73	BEND
5524	386,778.9775	2,371,712.4961	8+61.94	HYDRANT
5525	386,773.1753	2,371,718.9656	8+70.63	BEND
5526	386,773.6175	2,371,729.7192	8+81.39	BEND
5527	386,775.7191	2,371,734.2560	8+86.39	PC
5528	386,787.9647	2,371,862.5758	10+17.79	PT
5529	386,785.0467	2,371,874.3212	10+29.89	BEND
5530	386,812.5282	2,371,919.9089	10+83.12	BEND
5531	386,803.9316	2,371,954.6014	11+18.86	BEND
5532	386,758.3438	2,371,982.0830	11+72.10	BEND
5533	386,707.3215	2,371,969.4399	12+24.66	BEND
5534	386,688.5445	2,371,938.2911	12+61.03	BEND
5535	386,692.5057	2,371,915.6347	12+84.03	BLOWOFF
5536	386,577.5233	2,371,823.1311	5+00.63, 207' RT.	CENTER
5537	386,599.6886	2,371,815.7989	8+86.39, 194' RT.	CENTER

(5500) = COORDINATE POINT NO.
 SEE SHEET NO. 3 FOR PLAT COORDINATES

VERANDA CIRCLE COORDINATE LIST				
POINT	NORTHING	EASTING	STREET @ STATION	DESCRIPTION
6000	386,218.1326	2,371,797.8565	10+00.00	CL
6001	386,232.4758	2,371,758.0393	10+42.32	PC
6002	386,241.4449	2,371,711.3023	10+90.11	PT
6003	386,242.7210	2,371,673.1592	11+28.27	PC
6004	386,333.3963	2,371,618.6873	12+53.82	PRC
6005	386,350.4240	2,371,625.4179	12+72.14	PT
6006	386,387.6696	2,371,636.8344	13+11.10	PC
6007	386,482.9529	2,371,649.2179	14+07.64	PT
6008	386,593.0304	2,371,644.9286	15+17.80	PC
6009	386,645.4805	2,371,651.0443	15+70.82	PRC
6010	386,765.6433	2,371,857.0301	18+35.00	PT
6011	386,735.9046	2,371,978.7418	19+51.34	END
6012	386,088.5304	2,371,706.1862	10+42.32, 153' Lt.	CENTER
6013	386,305.6858	2,371,675.2658	12+53.82, 63' Rt.	CENTER
6014	386,384.4196	2,371,514.5097	2+77.28, 89.9' Lt.	CENTER
6015	386,471.7781	2,371,362.4355	3+75.11, 248.7' Lt.	CENTER
6016	386,599.6886	2,371,815.7989	15+17.80, 171' Rt.	CENTER
6017	386,599.6886	2,371,815.7989	15+17.80, 171' Rt.	CENTER

(6000) = COORDINATE POINT NO.
 SEE SHEET NO. 3 FOR PLAT COORDINATES

	No.	Revision	By	Date
	GLEN MEADOWS 2ND ADDITION WATERLINE IMPROVEMENTS WATERLINE BUBBLE MAP			
	GARY JANZEN, P.E. - CITY ENGINEER CITY OF WICHITA PROJECT NO. 448-90450			
	PROFESSIONAL ENGINEERING CONSULTANTS, P.A. 303 SOUTH TOPEKA WICHITA, KS 67202 316-262-2691 www.pec1.com			
Designed by	CSB, SAD	Job No.	35-13438-001	Sht. 4 of 12
Drawn by	CSL, JAN	Date	SEPTEMBER 2013	