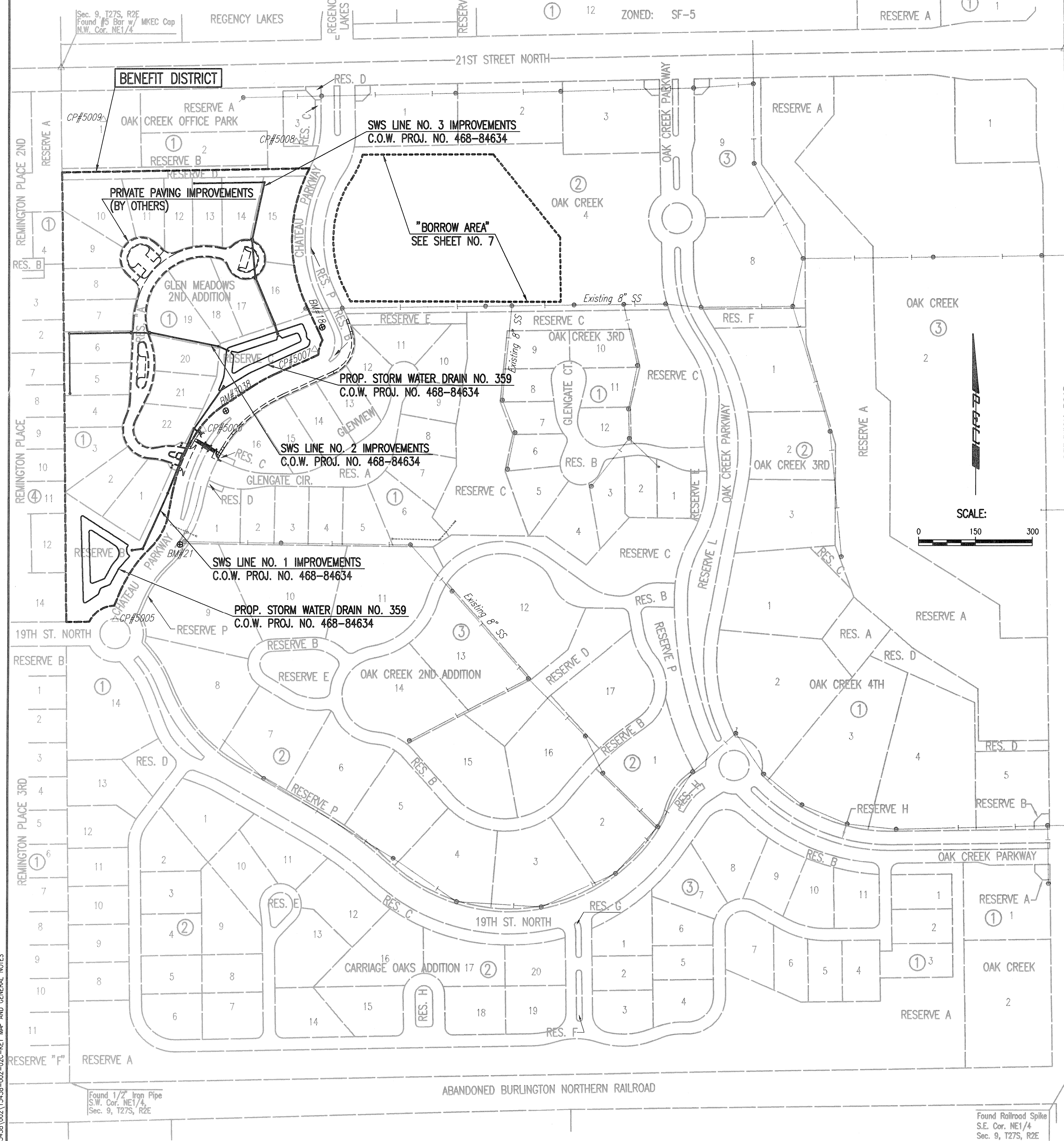


REGENCY LAKES COMMERCIAL 2ND ADDITION

GENERAL NOTES



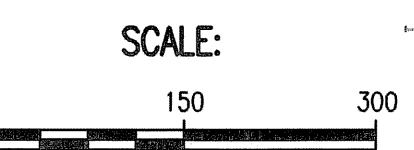
- ALL ELEVATIONS SHOWN ARE NAVD88 DATUM. (AT THIS LOCATION, NAVD88 - 0.49' = NGVD29 DATUM).
 - THE CONTRACTOR SHALL NOT START WORK ON THE PROJECT UNTIL THE PROJECT INSPECTOR IS ASSIGNED AND IS PRESENT ON THE SITE. ANY WORK DONE WITHOUT INSPECTION WILL BE REQUIRED TO BE UNCOVERED FOR INSPECTION.
 - ALL CONSTRUCTION WORK AND MATERIAL IN THIS PROJECT SHALL COMPLY WITH CITY OF WICHITA STANDARD SPECIFICATIONS FOR THE CONSTRUCTION OF CITY PROJECTS UNLESS OTHERWISE NOTED IN THE PLANS OR SPECIAL PROVISIONS.
 - UNDERGROUND UTILITY SERVICE LINES AND OVERHEAD UTILITY POLE LINES ARE TO BE ADJUSTED AS NECESSARY BY OTHERS PRIOR TO CONSTRUCTION UNLESS THE PLANS SPECIFICALLY CALL FOR THEIR ADJUSTMENT BY THE CONTRACTOR. EXISTING UTILITIES AND THEIR LOCATION, AS SHOWN ON THE PLANS, REPRESENT THE BEST INFORMATION OBTAINABLE FOR DESIGN. LOCATION INFORMATION HAS BEEN OBTAINED FROM THE VARIOUS UTILITY COMPANIES AND IS EITHER FROM COMPANY RECORD DRAWINGS OR COMPANY PROVIDED FIELD LOCATIONS. THE CONTRACTOR WILL BE REQUIRED TO WORK AROUND EXISTING UTILITIES WITHIN THE RIGHT-OF-WAY WHICH DO NOT CONFLICT WITH PROPOSED CONSTRUCTION.
 - TREES AND SHRUBS IN PUBLIC RIGHT-OF-WAY WHICH ARE IN DIRECT CONFLICT WITH PROPOSED NEW CONSTRUCTION SHALL BE REMOVED BY THE CONTRACTOR WITH THE ENGINEER'S APPROVAL. TREES AND SHRUBS WHICH ARE NOT IN DIRECT CONFLICT WITH PROPOSED NEW CONSTRUCTION SHALL BE SAVED AND PROTECTED FROM DAMAGE.
 - RUBBLE FROM THE REMOVAL OF MISCELLANEOUS STRUCTURES SHALL BE DISPOSED OF ON SITES TO BE PROVIDED BY THE CONTRACTOR AND APPROVED AS NOTED BELOW.
- ALL DISPOSAL SITES MUST BE APPROVED BY THE KANSAS DEPARTMENT OF HEALTH AND ENVIRONMENT. MATERIAL EITHER STOCKPILED OR DISPOSED OF IN A FLOOD PLAIN WOULD REQUIRE A KANSAS STATE BOARD OF AGRICULTURE PERMIT. ANY MATERIAL DUMPED IN WATERS OF THE UNITED STATES OR WETLANDS IS SUBJECT TO U.S. CORPS OF ENGINEERS PERMITTING REGULATIONS. ANY MATERIAL BURIED OR STOCKPILED BEYOND APPROVED CONSTRUCTION LIMITS WOULD REQUIRE ADDITIONAL ARCHEOLOGICAL INVESTIGATIONS UNLESS BURIED IN A PREVIOUSLY APPROVED BORROW LOCATION.
 - EACH BIDDER SHALL VISIT THE SITE OF THE PROJECT BEFORE SUBMITTING THE PROPOSAL FOR THIS WORK SO THAT HE WILL BE FULLY INFORMED OF THE EXISTING FIELD CONDITIONS AND THE OBSTACLES WHICH MIGHT BE ENCOUNTERED. UPON AWARD OF THE CONTRACT THE CONTRACTOR WILL NOT BE GRANTED ANY ADDITIONAL COMPENSATION WITH REGARDS TO TIME AND MONEY FOR CONDITIONS THAT MAY HAVE BEEN EVALUATED DURING ANY INSPECTION OF THE SITE.
 - FIELD LOCATE ALL EXISTING UTILITIES PRIOR TO BEGINNING ANY EXCAVATION WORK. CONTACT THE KANSAS-ONE-CALL SYSTEM AT 811 OR 687-2470 AT LEAST 72 HOURS IN ADVANCE TO REQUEST FIELD LOCATES. FOR UTILITIES THAT ARE NOT MEMBERS OF THE KANSAS-ONE-CALL SYSTEM, CONTACT THOSE COMPANIES DIRECTLY.

THE CONTRACTOR MUST NOTIFY THE FOLLOWING IN CASE OF AN EMERGENCY:

| | |
|-----------------------------------|--------------|
| COX COMMUNICATIONS | 800-778-9140 |
| KANSAS GAS SERVICE | 888-482-4950 |
| WESTAR ENERGY | 800-383-1183 |
| AT&T | 800-286-8313 |
| CITY OF WICHITA WATER DEPARTMENT | 262-6000 |
| CITY OF WICHITA SEWER MAINTENANCE | 262-6000 |

 - THE LUMP SUM BID ITEM "SITE CLEARING" SHALL INCLUDE, BUT NOT BE LIMITED TO REMOVAL OF MINOR OBSTRUCTIONS, REMOVAL AND SALVAGE OF CONFLICTING PRIVATE IMPROVEMENTS WITHIN THE PROJECT AREA, REMOVAL OF CONSTRUCTION DEBRIS, REMOVAL OF TREES WITHIN CONSTRUCTION LIMITS, AND GENERAL CLEAN-UP.

- THE CONTRACTOR SHALL BE RESPONSIBLE FOR PRESERVING PROPERTY IRONS. THE CONTRACTOR WILL BE REQUIRED TO RE-ESTABLISH ANY PROPERTY IRONS WHICH ARE DAMAGED OR DESTROYED BY THE CONTRACTOR CONSTRUCTION OPERATIONS, OR WHICH ARE COVERED BY 12" OR MORE OF FILL MATERIAL BY THIS PROJECT. SUCH IRONS SHALL BE RE-ESTABLISHED BY A LICENSED LAND SURVEYOR IN ACCORDANCE WITH STATE LAWS AND AT NO ADDITIONAL COST TO THE CITY.
- THE CONTRACTOR SHALL APPLY TEMPORARY SEED AND MULCH TO ALL UNPAVED AREAS DISTURBED BY HIS CONSTRUCTION OPERATIONS WITHIN 14 DAYS AFTER SUCH OPERATIONS CEASE IN ACCORDANCE WITH THE STANDARD SPECIFICATIONS. SEED SHALL BE ANNUAL RYE APPLIED AT THE RATE OF 4 LBS. PER 1,000 SQUARE FEET. MULCH SHALL BE PRAIRIE HAY APPLIED AT THE RATE OF 15 BALES PER ACRE. THIS WORK SHALL BE PAID FOR AT THE CONTRACT LUMP SUM PRICE BID FOR "TEMPORARY SEEDING".
- EROSION CONTROL (BMP'S) THE CONTRACTOR SHALL INSTALL AND/OR MAINTAIN EROSION CONTROL METHODS AS SPECIFIED ON THE EROSION CONTROL PLAN CONTAINED HEREIN. INSTALLATION OF THESE BMP'S DOES NOT RELIEVE THE CONTRACTOR OF THE RESPONSIBILITY OF ABATING SOIL EROSION.
- THE CONTRACTOR SHALL GIVE ALL PROPERTY OWNERS AND/OR TENANTS OF DEVELOPED PROPERTY ABUTTING THE CONSTRUCTION OF THIS PROJECT A MINIMUM OF 10 DAYS ADVANCE NOTICE PRIOR TO START OF CONSTRUCTION IN THE VICINITY OF THE AFFECTED PROPERTY.
- THE CONTRACTOR SHALL REMOVE AND RESET EXISTING ROAD SIGNS THAT INTERFERE WITH CONSTRUCTION. SIGNS DAMAGED THRU NEGLIGENCE OF THE CONTRACTOR SHALL BE REPLACED BY THE CONTRACTOR AT NO ADDITIONAL COST TO THE PROJECT.
- CONTRACTOR SHALL SUPPLY, INSTALL, AND MAINTAIN CONSTRUCTION TRAFFIC CONTROL AS NECESSARY TO PROTECT THE TRAVELING PUBLIC. ALL TRAFFIC CONTROL DEVICES, AND THE INSTALLATION AND USE THEREOF, SHALL CONFORM TO THE REQUIREMENTS OF THE MANUAL ON UNIFORM TRAFFIC CONTROL DEVICES (MUTCD), LATEST EDITION. ALL DEVICES SHALL BE REFLECTORIZED. CONSTRUCTION TRAFFIC CONTROL SHALL BE SUBSIDIARY TO OTHER BID ITEMS OF WORK.
- WATER FOR EARTHWORK SHALL BE CONSIDERED SUBSIDIARY TO "UNCLASSIFIED EXCAVATION".
- PRIOR TO CONSTRUCTION, THE CONTRACTOR SHALL RE-ESTABLISH CONTROL POINTS AND BENCH MARKS AND VERIFY THEIR ACCURACY.
- INLET HOOKUPS AND INLET PROTECTION SHALL BE BID PER EACH REGARDLESS OF INLET SIZE.
- THE CONTRACTOR SHALL EXERCISE CAUTION WHILE WORKING IN THE VICINITY OF EXISTING IRRIGATION AND LANDSCAPING ITEMS. ANY REMOVAL, RELOCATION AND/OR REPLACEMENT OF LANDSCAPING ITEMS, SPRINKLER HEADS, IRRIGATION SYSTEMS OR OTHER PRIVATE IMPROVEMENTS THAT ARE IN DIRECT CONFLICT WITH CONSTRUCTION SHALL BE COORDINATED WITH THE ENGINEER. THE CONTRACTOR SHALL BE RESPONSIBLE FOR NOTIFYING THE PROPERTY OWNER OF ANY SUCH WORK, AND FOR REPAIRING ANY DAMAGE TO THE EXISTING PRIVATE IMPROVEMENTS RESULTING FROM CONSTRUCTION OF THE PROJECT. THE MATERIAL COST, LABOR COST AND ALL INCIDENTALS NECESSARY TO COMPLETE THIS WORK SHALL BE INCLUDED IN THE LUMP SUM PRICE BID FOR "SITE CLEARING".



| EARTHWORK SUMMARY (C.Y.) | | | |
|--------------------------|-------------------------|-----------------------|---------------|
| | Unclassified Excavation | Compacted* Fill (95%) | Fill** |
| Mass Grading | 14,907 | 10,990 | 21,659 |
| Borrow Area | 23,504 | | |
| TOTALS | 38,411 | 10,990 | 21,659 |

**FOR INFORMATION ONLY--NOT A PAY ITEM. NO SHRINKAGE FACTOR HAS BEEN APPLIED. * 95% COMPACTION IS REQUIRED WITHIN RESERVE "A" AND ADJACENT STREET DRAINAGE AND UTILITY EASEMENT, 90% REQUIRED IN ALL OTHER AREAS.

ESTIMATED WASTE MATERIAL AT PROJECT COMPLETION= 38,411 - (21,659/0.85) = 0 C.Y. ASSUMED 15% SHRINK/SWELL

EXCESS MATERIAL SHALL BE SPREAD ON PROJECT SITE, BLADED SMOOTH AND SLOPED TO DRAIN.

THE CONTRACTOR SHALL SATISFY THEMSELVES WITH THE EARTHWORK QUANTITIES AND NO CHANGE ORDER FOR EARTHWORK WILL BE APPROVED.

CONTROL POINTS

- Pt. No. 5005
N-385,805.895978, E-2,371,579.631082
PK NAIL AT 19TH AND CHATEAU PARKWAY
- 3.00' N TO BACK OF NORTH EDGE OF ROLL CURB ON NORTH SIDE OF ROUNDABOUT AT 19TH AND CHATEAU PARKWAY LOCATES.
 - 5.50' S TO EDGE OF CONCRETE
 - 1.50' W TO CURB JOINT NORTH AND SOUTH
- Pt. No. 5006
N-386,306.326915, E-2,371,810.511367
NO. 4 REBAR
- 4.00' W TO EAST EDGE OF WEST SIDEWALK
 - 5.20' E TO BACK OF WEST CURB CHATEAU PARKWAY
 - 75.00' S TO @ OF GLENGATE CIRCLE TO THE EAST
- Pt. No. 5007
N-386,514.205262, E-2,372,104.718538
NO. 4 REBAR WITH I.D. CAP "ALPHA CONTROL"
- 37.4' N TO NE CORNER OF SE END OF HEADWALL
 - 61.2' NE TO CENTER OF CHISELED SQUARE ON CURB INLET
 - 26.8' E TO BACK OF WEST CURB
 - 38.5' S TO CENTER OF MH ON CURB INLET AT 90° TURN IN CHATEAU PARKWAY WEST OF SOUTH NOSE OF MEDIAN CURB ISLAND

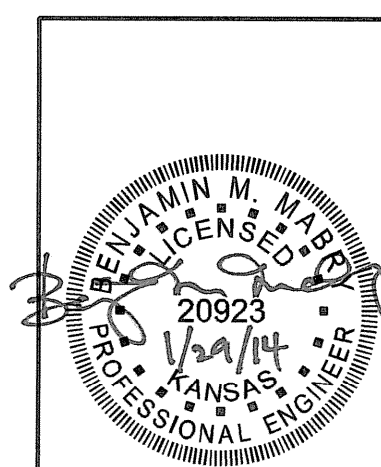
BENCHMARK LIST

- BM #18 - CHISELED SQUARE ON CENTER FACE OF CURB INLET ON WEST SIDE OF CHATEAU PARKWAY, 600' SOUTH OF 21ST STREET NORTH NEAR NORTHWEST CORNER GLENVIEW ADDITION. ELEV. = 1379.13 NAVD88
- BM #3038 - BRASS DISC ON TOP OF WEST CURB OF CHATEAU PARKWAY, 165 FEET NORTH OF GLENVIEW CIRCLE. ELEV. = 1384.60 NAVD88
- BM #21 - CHISELED SQUARE ON WEST SIDE OF CONCRETE BASE FOR LIGHT POLE ON EAST SIDE OF CHATEAU PARKWAY NEAR SOUTHWEST CORNER OF GLENVIEW ADDITION, 1200± SOUTH OF 21ST STREET NORTH. ELEV. = 1390.30 NAVD88

- Pt. No. 5008
N-387,057.908782, E-2,372,056.038731
NO. 4 REBAR IN OAK CREEK OFFICE PARK
- 12.0' S TO NORTH BACK OF CURB FOR PARKING STALLS IN-LINE WITH PARKING STALL STRIPE BETWEEN 3 STALLS WEST AND 3 STALLS EAST
 - NORTH OF EASTERN MOST PARKING STALLS
 - 68.0' SSW TO NE CORNER OF ELECTRIC PANEL BOX

- Pt. No. 5009
N-387,116.064133, E-2,371,546.185265
NO. 4 REBAR IN GRASS BUILDING PAD
- 94.5' N TO SOUTH CURB OF 21ST STREET NORTH
 - 106.0' ESE TO CENTER OF MH ON WEST SIDE OF PARKING LOT, IN GRASS, FOR OAK CREEK OFFICE PARK

Saved 01-28-2014 1:26:42 PM by BJS
 File: 13438-002-13438-002-001-GEN-IMP AND GENERAL NOTES
 C:\2013\13438\002\13438-002-001-GEN-IMP AND GENERAL NOTES



| | | | |
|-----|----------|----|------|
| No. | Revision | By | Date |
| | | | |

GLEN MEADOWS 2ND ADDITION
STORM WATER DRAIN NO. 359
KEY MAP AND GENERAL NOTES
 GARY JANZEN, P.E. - CITY ENGINEER
 CITY OF WICHITA PROJECT NO. 468-84634

PEC PROFESSIONAL ENGINEERING CONSULTANTS, P.A.
 303 SOUTH TOPEKA WICHITA, KS 67202
 316-262-2691 www.pec1.com

| | | | | | |
|-------------|-----|---------|----------------|------|----------|
| Designed by | BMM | Job No. | 35-13438-002 | Sht. | 02 of 28 |
| Drawn by | BJS | Date | September 2013 | | |