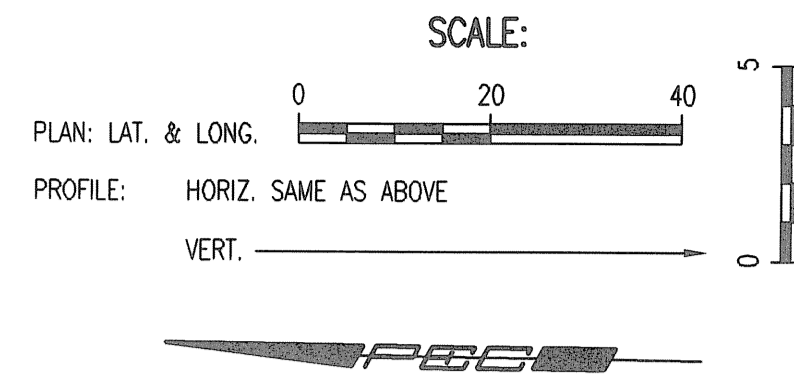
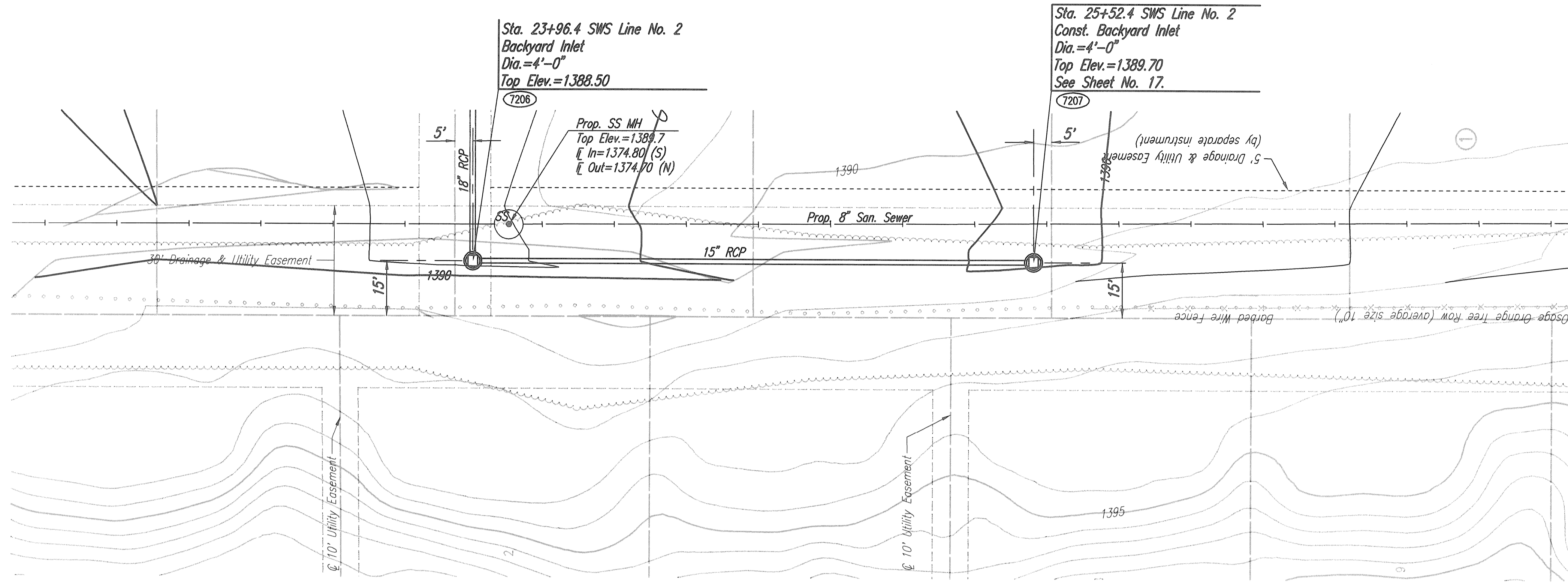


DATE	BY	CHECKED	CHECKED
PLAN			

DATE	BY	CHECKED	CHECKED
PROFILE			

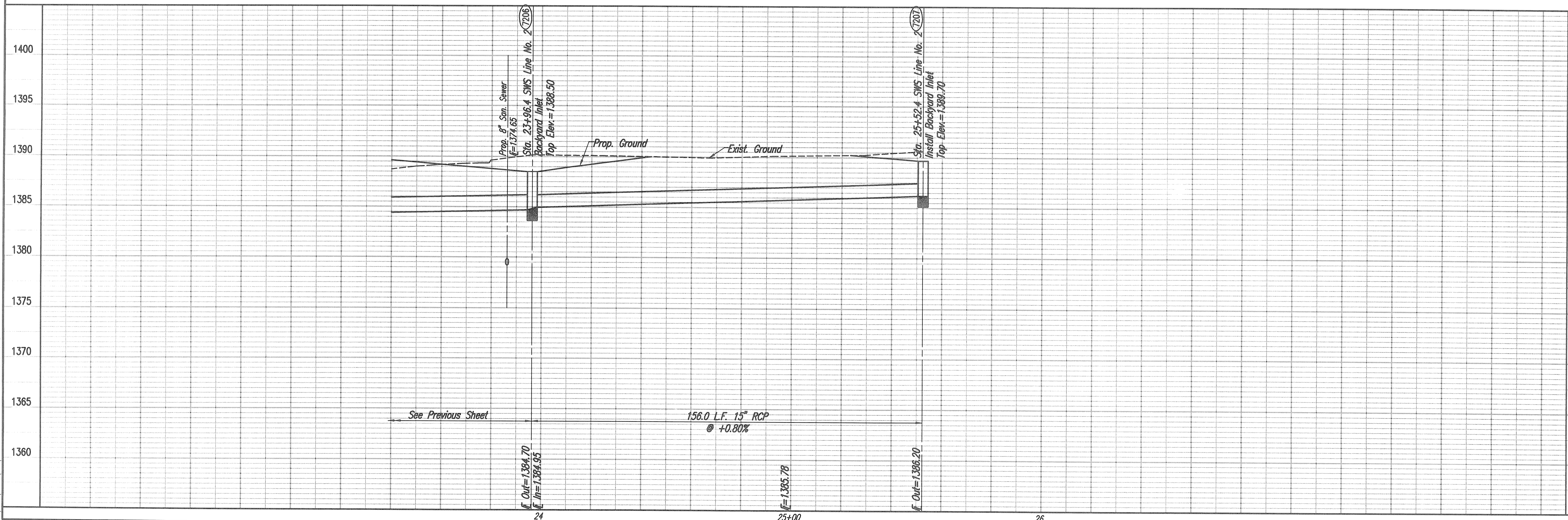
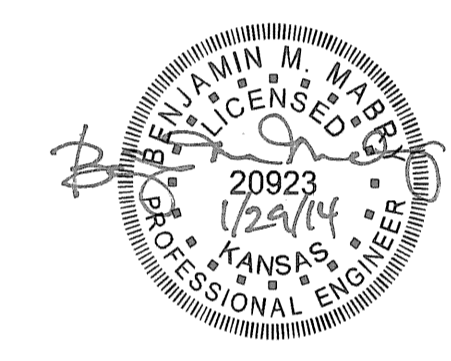
Sheet 01-28-2014 1:36:46 PM by BJS
 Plot Date 11-01-2014 4:38:54 PM by BJS
 0:\2013\13438\002\13438-002-10-STORM SEWER LINE NO. 2



COORDINATE LIST		
POINT	NORTH	EAST
7206	386,554.2056	2,371,456.5460
7207	386,398.2120	2,371,458.2600

7206 = COORDINATE POINT NO.
 SEE SHEET NO. 4 FOR PLAT COORDINATES

NOTE:
 CONTRACTOR SHALL NOT REMOVE ANY HEDGE ROW TREES FROM THE PROJECT SITE WITHOUT SPECIFIC APPROVAL OF THE OWNER AND/OR ENGINEER.



STORM SEWER LINE NO. 2
 GLEN MEADOWS 2ND ADDITION
 STORM WATER DRAIN NO. 359
 GARY JANZEN, P.E. - CITY ENGINEER
 CITY OF WICHITA PROJECT NO. 468-84634

PEC
 PROFESSIONAL ENGINEERING CONSULTANTS, P.A.
 303 SOUTH TOPEKA WICHITA, KS 67202
 316-262-2881 www.pec1.com

Designed By: BJM
 Drawn By: BJS
 Job No.: 35-13438-002
 Date: September 2013