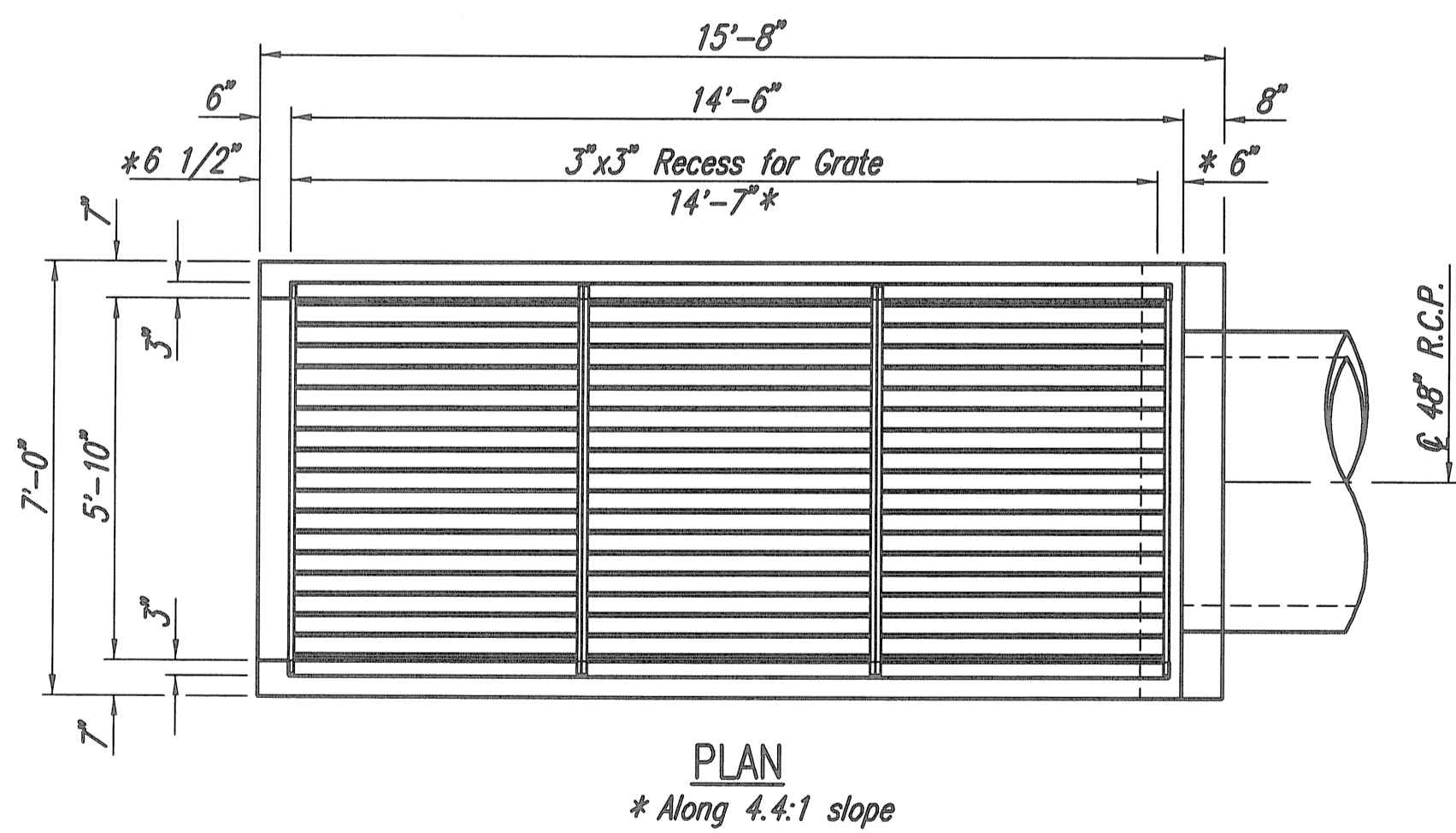
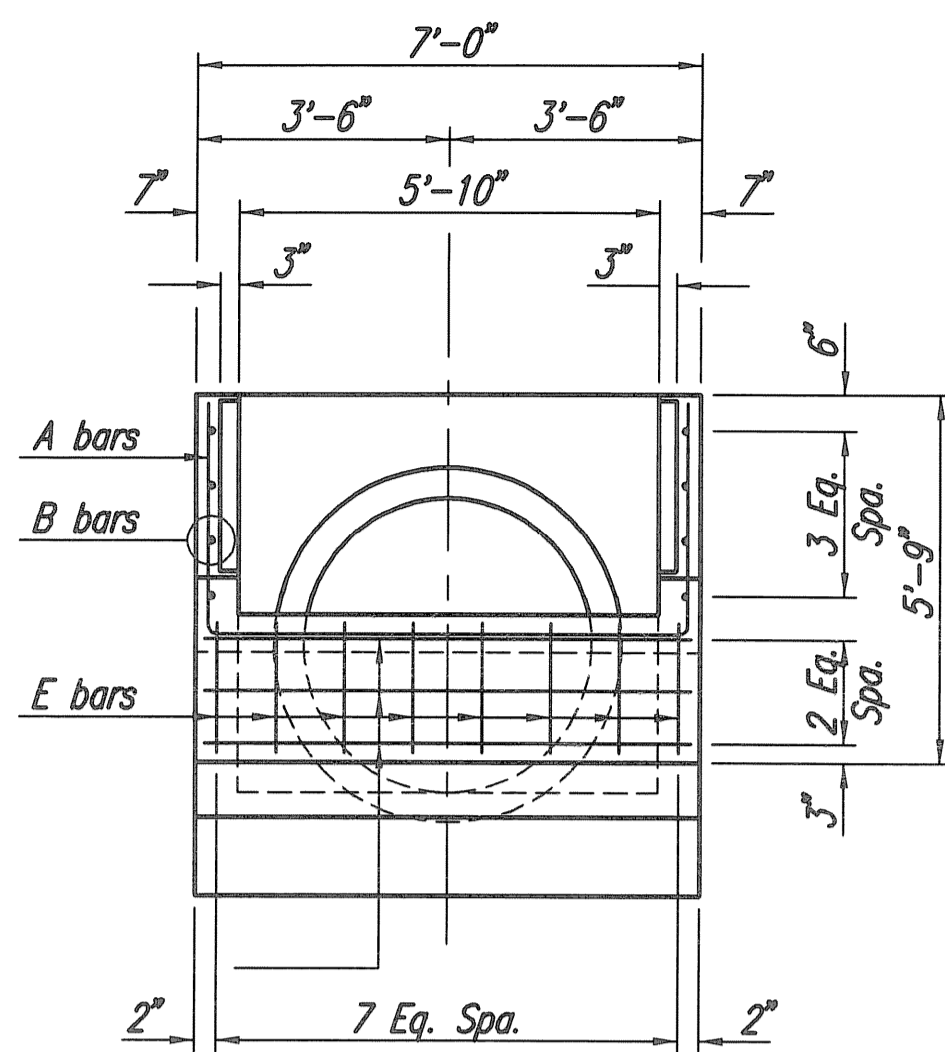


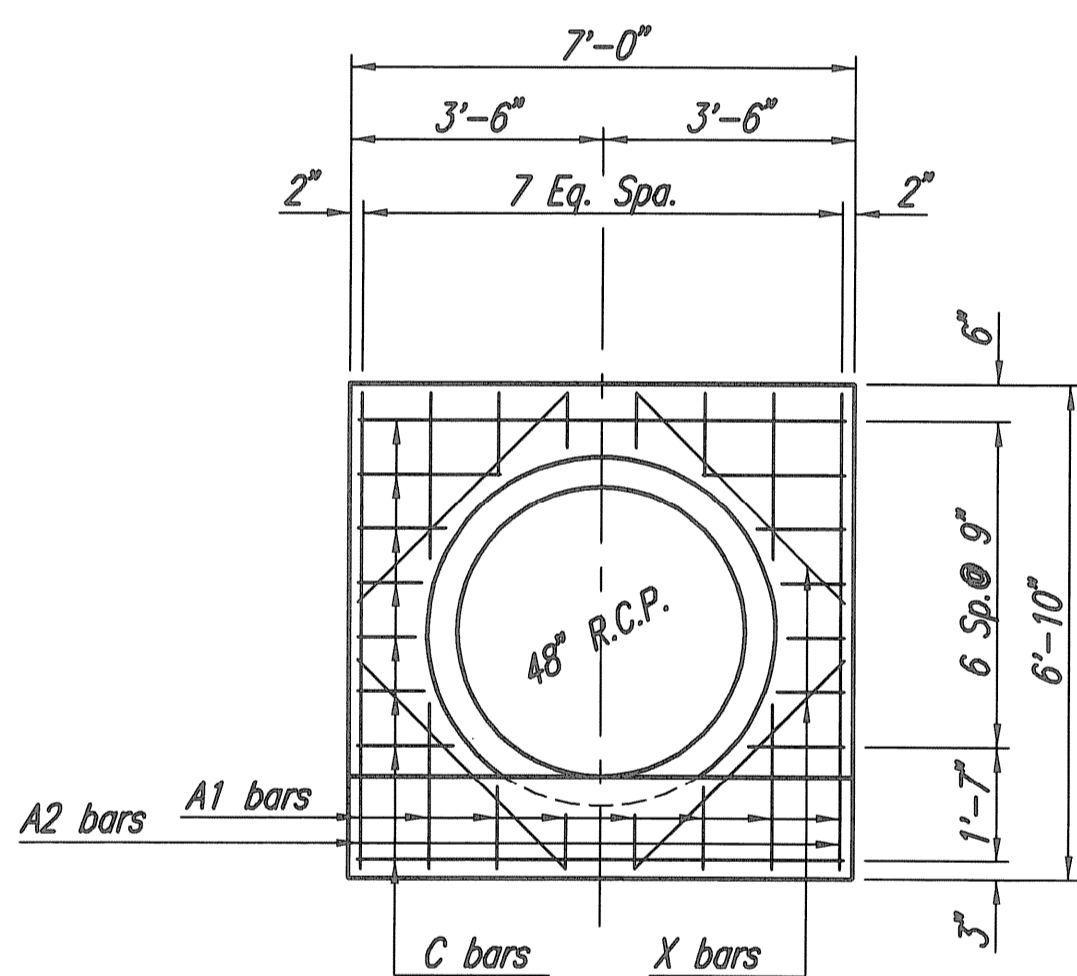
WELDED STRUCTURAL STEEL GRATE
 Weight 663 Lbs. Each
 (3 Required)
 Reuse existing Structural Steel Grates
 ▲ For information only



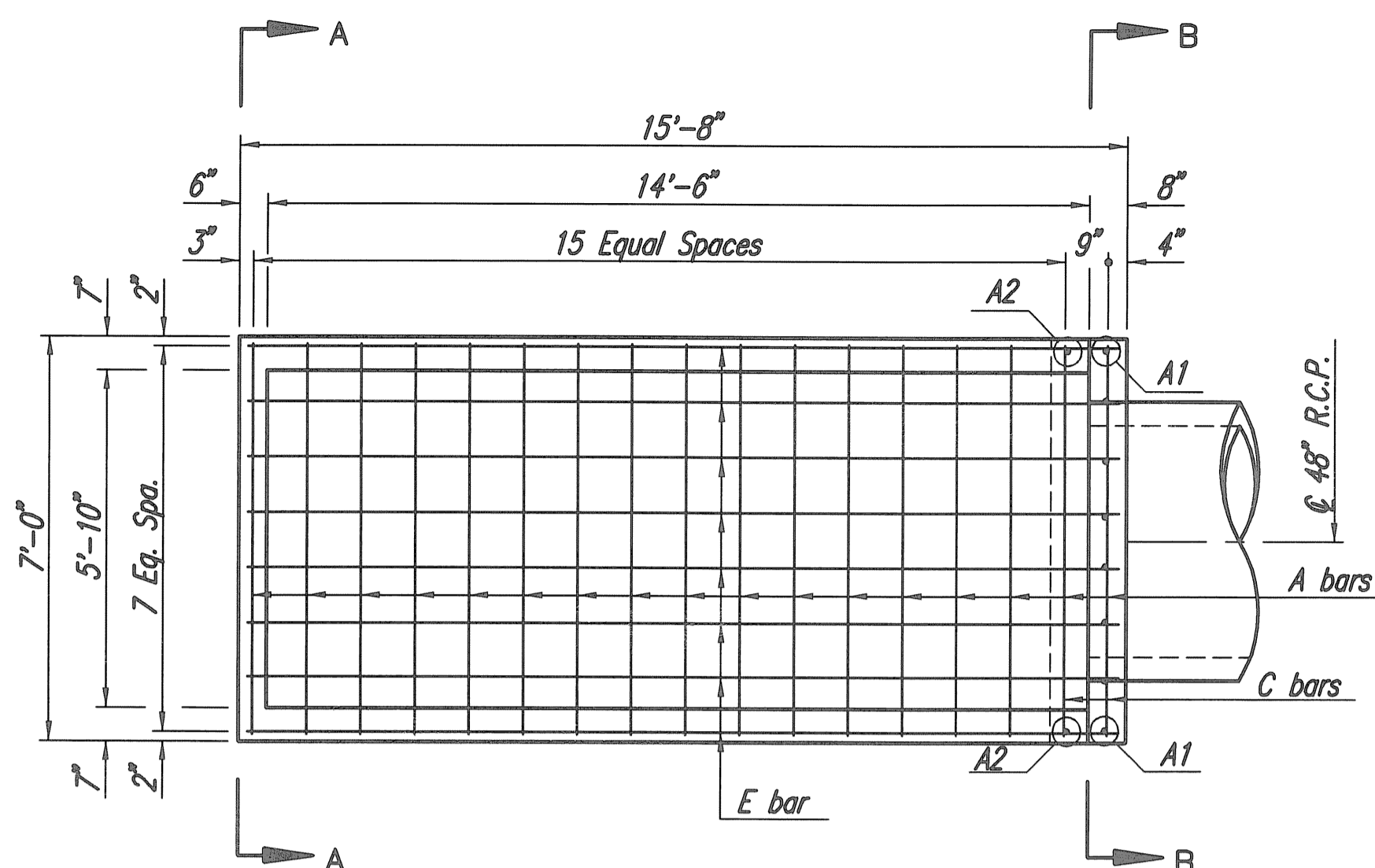
PLAN
 * Along 4.4:1 slope



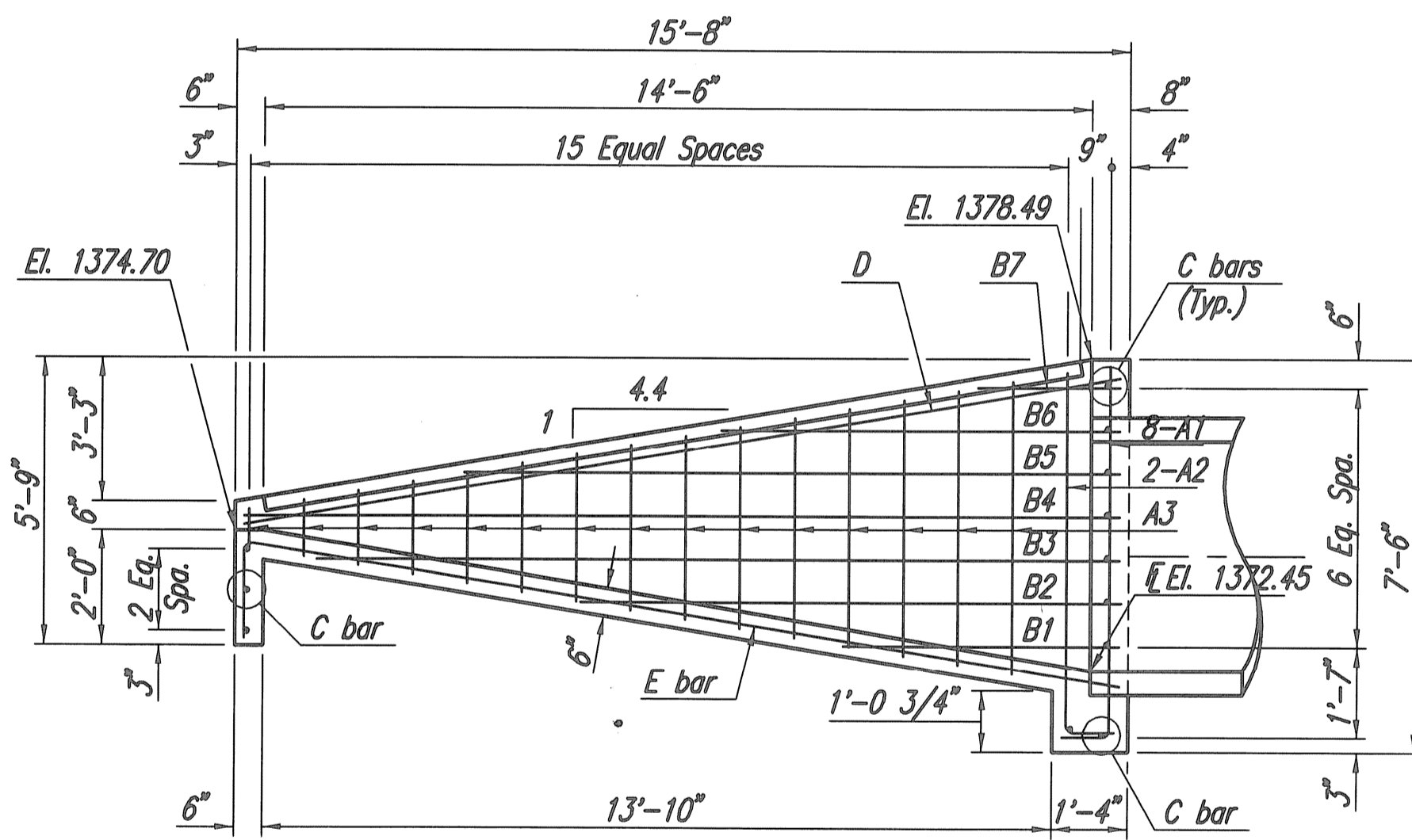
VIEW A-A



VIEW B-B



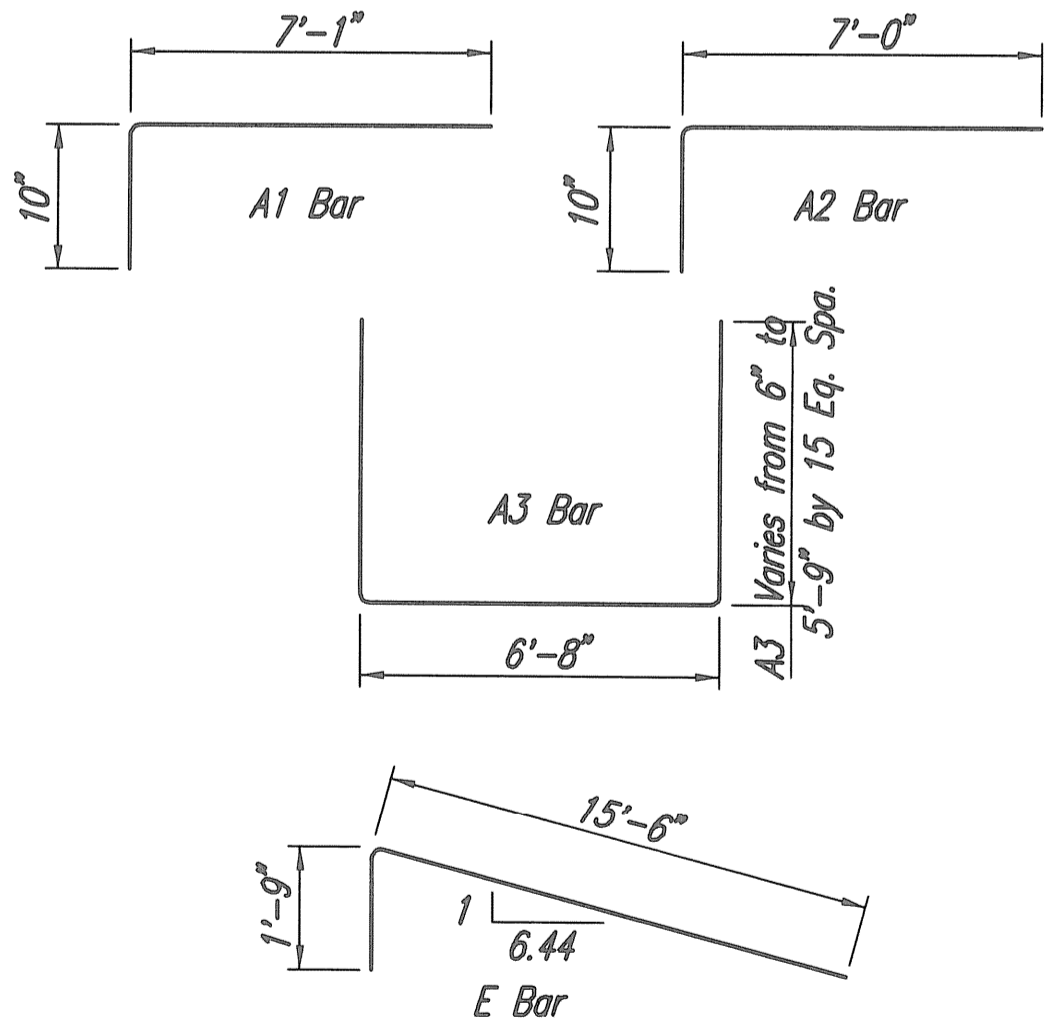
PLAN



SECTION

RE-BAR SCHEDULE				
Mark	Shape	No.	Length	Weight
A1	┌	8	7'-3"	38.74
A2	┌	2	7'-2"	9.57
A3	┌	16	Varies	Varies
B1	—	2	5'-1"	6.79
B2	—	2	10'-8 1/2"	14.20
B3	—	2	15'-4"	20.49
B4	—	2	13'-4"	17.81
B5	—	2	9'-6 1/2"	12.75
B6	—	2	5'-9"	7.68
B7	—	2	1'-11 1/2"	2.62
C	—	12	6'-9"	54.11
D	—	2	15'-6"	20.71
E	└	8	17'-3"	92.18
X	—	4	4'-0"	10.69
Total Rebars				518 Lbs.
Concrete				6.02 C.Y.

All Concrete Reinforcement to be #4 bars.



BENDING DIAGRAMS

CONCRETE HEADWALL NOTES

CONCRETE: Bevel all exposed edges with a 3/4" triangular molding or finish with an approved edging tool. Concrete shall have a minimum 28 day compressive strength of 4,000 p.s.i. All pipes shall be flush cut prior to being cast into the headwall.

REINFORCING STEEL: All dimensions relative to reinforcing steel are to centerline of bar unless otherwise noted. All clearances shall be 2" unless otherwise noted. All reinforcing steel shall conform to A.S.T.M. designation A615 Grade 60 and shall be epoxy coated.

PAYMENT: A deduction in concrete quantities has been made for the pipe opening. The "R.C. Headwall (48") shall be paid for at the unit price per each including concrete, reinforcing steel, structural steel, galvanizing, excavation, backfilling and all other miscellaneous materials, labor, tools, equipment and incidentals necessary to complete the work. Quantities shown are for information only.

No.	Revision	By	Date
GLEN MEADOWS 2ND ADDITION STORM WATER DRAIN NO. 359 HEADWALL DETAILS (48 IN) GARY JANZEN, P.E. - CITY ENGINEER CITY OF WICHITA PROJECT NO. 468-84634 PROFESSIONAL ENGINEERING CONSULTANTS, P.A. 303 SOUTH TOPEKA WICHITA, KS 67202 316-262-2691 www.pec1.com			
Designed by	BMM	Job No.	35-13438-002
Drawn by	BJS	Date	September 2013

Sht 22 of 28

Scaled: 0.1" = 20'-0" by BJS
 Plotted: 09/23/13 10:48:54 AM by BJS
 0:\2013\13438\002\13438-002-22C-HEADWALL DETAILS (48 IN)